



# FAT CAT

80' (24.38m) 1991 CUSTOM US BUILT Morelli/Miller  
Phillipsburg Saint Martin



## OVERVIEW

Manufacturer:	CUSTOM US BUILT		
Engines:	1 Yanmar	Hull Material:	Other
Engine Model:	4JH4-TE	Cruise Speed:	
Engine HP:	75	Max Speed:	
Beam:	34' 5"	Cabins/Heads:	4 / 3
Max Draft:	5' 25"	Fuel Type:	Diesel
Water:		Fuel:	

\$875,000



Data Sheet

Category: Catamaran	Fuel Type: Diesel	tonnes
Condition: Used	Hull Material: Other	HIN/IMO: D11SD001B191
Model Year: 1991		Stock #: 400132
Beam: 34'5" Max Draft: 5' 25" LOA: 80' (24.38m)		
Cabins: 4		
Heads: 3		

Engines/Generators

Engine 1

Yanmar  
4JH4-TE  
75HP  
Fuel: Diesel  
Hours: 1267

## Summary/Description

Used Sail Catamaran for sale

Sailing Catamaran, Fat Cat comes ready equipped for comfortable, extended cruising. All the necessary safety equipment, from an 8-man life raft to personal flotation devices are provided. There is a relevant and documented spares inventory for running maintenance. Also provided is an extensive set of hand and power tools. The galley comes fully stocked with crockery, cutlery, glassware, cookware and electrical appliances. The staterooms are served with quality bed linen and bathroom towels and there is even a full library of books ready to enjoy under the cockpit umbrella.

In short, Fat Cat is a turnkey, long distance, long term, live-aboard cruiser. She is being sold fully equipped.

**\*\*Model year: 1991 Refit 1998/2004/2014\*\***

## Layout & Accommodations

Saloon-

12V DC / 240V AC / 120V AC breaker panel

700 Ah house batteries

House battery chargers, two WM RSP-1500-15 units producing 200 amps @ 13V with remote display

Go Power 3000W DC to AC inverter with remote display and control

Audio visual system, Samsung TV, stereo, pre-amplifier, channel amplifier and eight Bose speakers

Fitted safe

Sea Frost chest fridge and freezer, twin chiller plates with spill over to fridge

Four burner and oven Broadwater marine stove with extraction hood

Amberton propane fume detection and control system

RCA microwave oven

Whale 11 gallon water heater

Ultraviolet fresh water sterilization system and

Dometic Marine Systems AC unit 10,000 BTU

Day head-

Vacuflush marine head, fresh water

Port forward lazarette-

Village Marine Tech 3PW 1200 water maker

190 US Gal diesel fuel tank

Fuel board with Racor filter and micro-valves for on / off control of main engine, generator, transfer and polishing

Two bilge pumps with high water alarms

Starboard forward lazarette-

190 US Gal diesel fuel tank

Fuel board with Racor filter and micro-valves for main engine, generator, transfer and polishing

Two bilge pumps with high water alarms

Stb / port shore power, stb / port generator selection breaker panel

Port forward cabin-

Yanmar 4JH4-TE 75hp @ 3200 rpm main engine 1267 hrs

ZF 25MA transmission 2.27 ratio fwd  
Seafire extinguisher fire safety system  
Aquadrive, pillow block bearing, PSS seal, 1 1/4" stainless shaft and Gori 3 blade folding propeller  
Refrigeration pump  
AC system pump  
Two bilge pumps with high water alarms  
Custom sea chest with strainer  
Dometic Marine Systems AC unit (shared with saloon) 10,000 BTU  
100 US Gal pressurized fresh water tank  
110 US Gal black water tank located in keel

Starboard forward cabin-  
Yanmar 4JH4-TE 75hp @ 3200 rpm main engine 1229 hrs  
ZF 25MA transmission 2.27 ratio fwd  
Seafire extinguisher fire safety system  
Aquadrive, pillow block bearing and PSS seal 1 1/4" stainless shaft and Gori 3 blade folding propeller  
Two bilge pumps with high water alarms  
Custom sea chest with strainer  
Dometic Marine Systems AC unit (shared with saloon) 10,000 BTU  
100 US Gal pressurized fresh water tank  
110 US Gal black water tank located in keel

Port stateroom-  
Vacuflush marine head, fresh water  
Automatic shower pump  
High water bilge alarm  
Individual stereo system with four Bose speakers  
Dometic Marine Systems AC unit 10,000 BTU

Starboard stateroom-  
Vacuflush marine head, fresh water  
Automatic shower pump  
High water bilge alarm  
Individual stereo system with four Bose speakers  
Dometic Marine Systems AC unit 10,000 BTU

Port aft lazarette-  
10 kW Phaser Generator with control panel, sound box and heat extraction system 136hrs  
Bilge pump with high water alarm  
Deck fresh water wash-down faucet (on deck)

Starboard aft lazarette-  
12 kW Phaser Generator with control panel, sound box and heat extraction system 1035 hrs  
Bilge pump with high water alarm  
Deck fresh water wash-down faucet (on deck)

## **Deck & Equipment**

Cockpit-  
Two Harken 65.3 three speed winches, two Lewmar 66 2 speed winches  
Navtec manual hydraulic out-haul system

Magma propane grill

Deck forward-

Maxwell electric anchor windlass

Lewmar capstan for screecher tacking lines

Three Lewmar 66 2 speed winches

Lewmar 68 2 speed electric winch

## **Electronics & Navigation**

Helm-

Simrad AP20 autopilot

Garmin GPS 740 chart plotter

SI-TEX radar display

Six Raymarine ST60+ sailing instruments displays

Signet Marine SL254 wind instrument

Main engines VDO tachometer / water temp. / oil pressure / exhaust pyrometer gauges

Select-able VDO temperature gauge for gensets

Morse single handle engine controls

Whitlock Mamba rod-link steering "rack and pinion"

## **Electrical, Power & Plumbing**

12V DC / 240V AC / 120V AC breaker panel

700 Ah house batteries

House battery chargers, two WM RSP-1500-15 units producing 200 amps @ 13V with remote display

Go Power 3000W DC to AC inverter with remote display and control

10 kW Phaser Generator with control panel, sound box and heat extraction system 136 hrs

12 kW Phaser Generator with control panel, sound box and heat extraction system 1035 hrs

Port side-

100 US Gal pressurized fresh water tank

110 US Gal black water tank located in keel

190 US Gal diesel fuel tank

Starboard side-

100 US Gal pressurized fresh water tank

110 US Gal black water tank located in keel

190 US Gal diesel fuel tank

## **Engine & Mechanical**

Port side -

Yanmar 4JH4-TE 75hp @ 3200 rpm main engine 1267 hrs

ZF 25MA transmission 2.27 ratio fwd

Gori 3 blade folding propeller

Starboard side

Yanmar 4JH4-TE 75hp @ 3200 rpm main engine 1229 hrs

ZF 25MA transmission 2.27 ratio fwd

Gori 3 blade folding propeller

## **Sails & Rigging**

Spars and rigging-

Full carbon fiber mast and boom

Aramid shrouds with ECsix mast diamonds and forestay

New North Sails 3di cruising Main and Solent. 2015 Doyle furling screecher, due for replacement

## **Additional Information**

Other

Auxiliary-

AB 14' ALX aluminum hull inflatable tender

Yamaha Enduro two stroke 30hp outboard



Used Sail Catamaran for sale 1991 CUSTOM US BUILT Morelli/Miller - FAT CAT





Used Sail Catamaran for sale 1991 CUSTOM US BUILT Morelli/Miller - FAT CAT



Used Sail Catamaran for sale 1991 CUSTOM US BUILT Morelli/Miller - FAT CAT



Used Sail Catamaran for sale 1991 CUSTOM US BUILT Morelli/Miller - FAT CAT



Used Sail Catamaran for sale 1991 CUSTOM US BUILT Morelli/Miller - FAT CAT



Used Sail Catamaran for sale 1991 CUSTOM US BUILT Morelli/Miller - FAT CAT





Used Sail Catamaran for sale 1991 CUSTOM US BUILT Morelli/Miller - FAT CAT



Used Sail Catamaran for sale 1991 CUSTOM US BUILT Morelli/Miller - FAT CAT





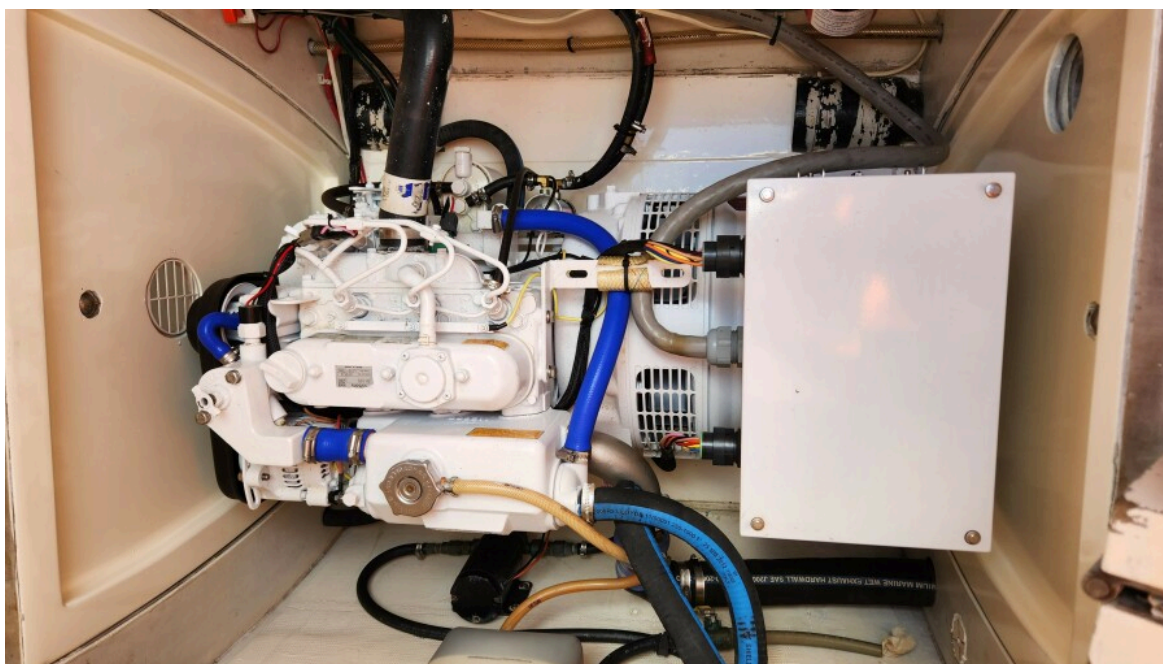
Used Sail Catamaran for sale 1991 CUSTOM US BUILT Morelli/Miller - FAT CAT



Used Sail Catamaran for sale 1991 CUSTOM US BUILT Morelli/Miller - FAT CAT



Used Sail Catamaran for sale 1991 CUSTOM US BUILT Morelli/Miller - FAT CAT

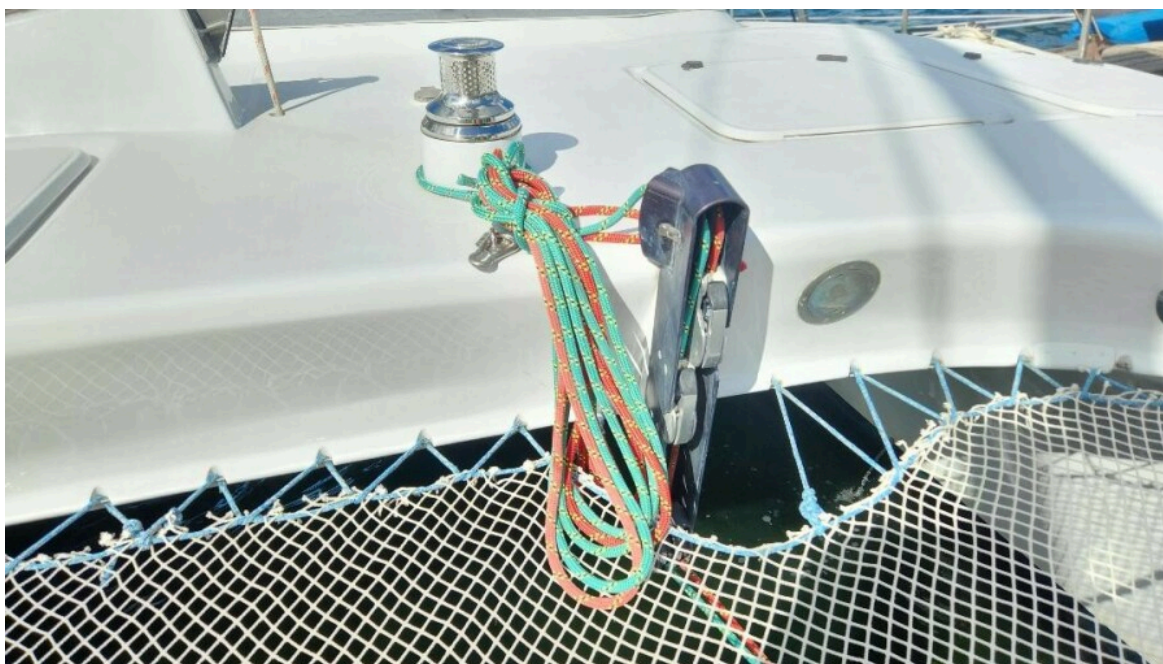


Used Sail Catamaran for sale 1991 CUSTOM US BUILT Morelli/Miller - FAT CAT





Used Sail Catamaran for sale 1991 CUSTOM US BUILT Morelli/Miller - FAT CAT



Used Sail Catamaran for sale 1991 CUSTOM US BUILT Morelli/Miller - FAT CAT





Used Sail Catamaran for sale 1991 CUSTOM US BUILT Morelli/Miller - FAT CAT



Used Sail Catamaran for sale 1991 CUSTOM US BUILT Morelli/Miller - FAT CAT



Used Sail Catamaran for sale 1991 CUSTOM US BUILT Morelli/Miller - FAT CAT



Used Sail Catamaran for sale 1991 CUSTOM US BUILT Morelli/Miller - FAT CAT





Used Sail Catamaran for sale 1991 CUSTOM US BUILT Morelli/Miller - FAT CAT



Used Sail Catamaran for sale 1991 CUSTOM US BUILT Morelli/Miller - FAT CAT



Used Sail Catamaran for sale 1991 CUSTOM US BUILT Morelli/Miller - FAT CAT



Used Sail Catamaran for sale 1991 CUSTOM US BUILT Morelli/Miller - FAT CAT





Used Sail Catamaran for sale 1991 CUSTOM US BUILT Morelli/Miller - FAT CAT



Used Sail Catamaran for sale 1991 CUSTOM US BUILT Morelli/Miller - FAT CAT