



50' (15.24m) 2024 X-Yachts XP50  
Santa Barbara California United States



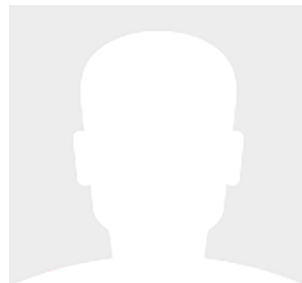
## OVERVIEW

Manufacturer: X-Yachts  
Engines:  
Engine Model:  
Engine HP:  
Beam:  
Max Draft: "  
Water:

Hull Material:  
Cruise Speed:  
Max Speed:  
Cabins/Heads:  
Fuel Type:  
Fuel:

Other  
  
/  
Other

## Call for Price





## Data Sheet

Category: Cruiser-Racer  
Condition: New  
Model Year: 2024  
LOA: 50' (15.24m)

Fuel Type: Other  
Hull Material: Other

## Engines/Generators

## Summary/Description

This listing is for a new yacht, built to order at the X-Yachts factory in Haderslev, Denmark.

The X-Yachts Xp 50 is a high-performance cruiser-racer which offers impressive pace and ease of handling. Xp 50 is functionalism utilizing the Scandinavian design approach. Superbly engineered, minimalistic yet functional styling on all details above as well as below decks. The longer waterline length of this model allows additional cruising features to be incorporated, as well as increased straight-line speed.

## Overview

*\*Note - price listed is base price, not including shipping or extras. Subject to change based on options and exchange rate.\**

### Interior

The Xp 50 interior is available in a three cabin layout with twin shower and single shower options, which both benefit from exemplary use of light and space.

The innovative Xperformance sliding chart table allows the navigator to be seated either forward or aft-facing, or for the chart table to be slid aft to increase the side berth seating.

There is also a fixed chart table option which includes additional storage drawers, with both featuring an easily accessible electronics control panel and deep bookshelves above.

### Specs

Specification Designer X-Yachts Design Team LOA (including bowsprit) 15.57 m 51'1" Hull Length 14.99 m 49'2" Waterline Length 13.31 m 43'8" Beam (max) 4.43 m 14'6" Draft - Shallow 2.35 m 7'9" Draft - Std 2.65 m 8'8" Draft - Deep 3.0 m 9'10" Air Draft (not including Windex) 23.83 m 78'2" Ballast - Std 5600 kg 12346 lbs Displacement - Light 13600 kg 29983 lbs Engine Diesel 55 kW 75 hp Fuel Tank - Std 300 ltr 79 gal(US) Water Tank - Std 550 ltr 145 gal(US)

### Cockpit Furniture

The inventive optional cockpit table folds neatly away into its own recess in the cockpit sole, enabling a swift change from functional sailing area to stylish entertaining zone. Additionally, there is a designated recess for the sprayhood framework and canvas, a specially designed 'garage' for the washboard, and a built-in halyard bin for rope tails for a clutter-free, safe and smart cockpit and coachroof area that is a pleasure to sail or relax in.

### Build

In line with the rest of the Xp range, the 50-footer utilises epoxy infusion build processes for improved stiffness with reduced weight, a carbon keel structure for maximum safety and ultimate stability, and a precision-moulded composite keel with iron fin and lead bulb giving a high ballast ratio.

## Disclaimer

The company offers the details of this vessel in good faith but cannot guarantee or warrant the accuracy of this information nor warrant the condition of the vessel. A buyer should instruct his agents, or his surveyors, to investigate such details as the buyer desires validated. This vessel is offered subject to prior sale, price change or withdrawal



without notice.

























