



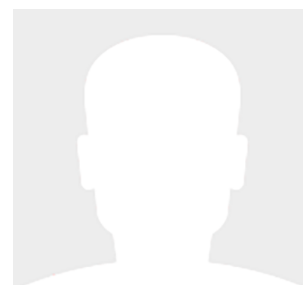
47' (14.33m) 2019 Beneteau Swift Trawler 47
Santa Barbara California United States



OVERVIEW

\$795,000

Manufacturer:	Beneteau		
Engines:	2 Cummins	Hull Material:	Other
Engine Model:	QSB 6.7L	Cruise Speed:	
Engine HP:	425	Max Speed:	
Beam:		Cabins/Heads:	/
Max Draft:	"	Fuel Type:	Diesel
Water:		Fuel:	



Krista Kieding krista@chandlery.com

1-805-965-4538



Data Sheet

Category: Trawlers
Condition: Used
Model Year: 2019
LOA: 47' (14.33m)

Fuel Type: Diesel
Hull Material: Other

Engines/Generators

Engine 1

Cummins
QSB 6.7L
Inboard
425HP
316.92KW
Fuel: Diesel
Year: 2019

Engine 2

Cummins
QSB 6.7L
Inboard
425HP
316.92KW
Fuel: Diesel
Year: 2019

Summary/Description

Safe, comfortable, and beautifully-designed, this Beneteau Swift Trawler 47 shows like new!

She boasts stunning finishes throughout with tons of natural light and storage as well as a desirable layout. There is plenty of room to entertain family and friends in her spacious galley, main salon, and upstairs on her flybridge.

Milan is a 2019 single-owner Beneteau Swift Trawler 47 that is in absolute immaculate condition. Her seller is a perfectionist who has her hull professionally buffed and waxed at least four times a year. All her systems are meticulously and consistently maintained to ensure everything is running perfectly at all times.

This stunning Swift Trawler is available with a desirable and rare upwind 60' Santa Barbara Harbor slip with an incredible view! Priced separately; ask us for details. She is also in a transferable LLC.

Overview

Manufacturer Provided Description

The Swift Trawler 47 combines confidence with affordability and it is the ideal boat for travelling with the family. She is designed to take you further faster and appeals for her distinctive character, elegant comfort and extra roominess on board.

Her robust look instantly inspires safety. This feeling is confirmed on board with a very practical open deck plan. Large walkways and several hand rails make passengers feel extra safe moving around. On the large flybridge, up to four people can sit up front underway, facing the sea. The cockpit is wonderfully modular so that you can enjoy the best of what the sea has to offer. The transom provides access to a large swim platform where you can enjoy leisure activities while at anchor. Already easy to handle with its twin engine, the Swift Trawler 47 can be equipped with joysticks that will make manoeuvring in the harbour child's play.

Factory Optional Equipment

- Factory upgrade (Twin Cummins 425 horse power turbo diesels)
- Bow & stern thrusters
- Hydraulic swim platform
- Hard top with retractable sun roof
- Mooring/anchoring package
- Ship control, tv in master
- Washer/dryer combination
- Teak cockpit flooring
- Inverter and ice maker
- Fenders, dock lines & safety package

Construction

Hull Composition:

- Sandwich (Polyester resin infusion - fiberglass)
- White gelcoat 9010
- Structural hull counter molding in monolithic laminate (Polyester resin infusion - fiberglass)

- Semi-planing hull

Deck Composition:

- Sandwich (Polyester resin infusion - fiberglass / balsa core)
- Structural counter molding in monolithic laminate (polyester resin - fiberglass)
- White gelcoat 9010
- Diamond tip type non-slip surface

Deck Equipment

Mooring / Anchoring Gear:

- Double stainless steel bow fitting
- 2000 W Vertical electric windlass
- 10 aluminum mooring cleats
- Stainless steel gunwale guards
- (2) compartments with self-bailers and polyester hoods
- Lewmar electric bow windlass
- Delta bow anchor

Cockpit:

- Self-bailing cockpit
- (2) lockers in cockpit bottom gas piston assisted and lockable
- Gas cylinder locker integrated into cockpit aft bench
- Cockpit shower with hot and cold water
- Double port cockpit access door
- Hydraulic swim platform
- Ladder with hand holds in swim platform
- Access door at starboard side deck from cockpit
- Emergency ladder
- (4) cup holders

Flybridge:

- Self-bailing flybridge
- Retractable stainless steel staircase with double flybridge access ramp
- Windscreen
- Stainless steel pulpit surrounding aft of flybridge
- Mast for mounting nav lights, radar and aerials
- Central steering console
- Control panel for electrical engine controls, electric windlass, thruster and trim tab
- Gauges indicators
- Rudder angle indicator
- Stainless steel steering wheel
- Steering compass
- Hydraulic steering
- Fog horn
- USB socket
- Adjustable pilot seat and 2 places for co-pilot with convertible backrest
- Flybridge lounge with bench seats, built in storage and extendable teak table

- GRP unit with sink, handrail and stowage
- Space for life raft with stainless steel fixing bolt plates
- (6) cup holders

Interior

Salon:

- Soft convertible to double berth
- Dividing rail and curtains for berth
- Roman shutters
- (2) arm chairs
- Semi-folding, adjustable varnished wood salon table
- Storage units and large drawers
- Stainless steel handrail in cockpit deckhead
- MP3, USB, iPod player with (2) speakers in the wheelhouse, (2) speakers in the cockpit and (2) in flybridge
- TV, DVD player and B&W loudspeakers in salon

Galley:

- L-shaped galley with corian countertop
- (2) stainless steel sinks with cold/hot water taps
- Electric oven
- 2-burner electric stove top
- 144 L fridge with (2) drawers
- Freezer and fridge
- Various drawers for storage
- Double trash can
- Microwave oven

Steering Station:

- Clear glass windscreen with aluminum frames
- Anti-reflective coating
- Windscreen wipers and washer
- Defogger
- Side windows with aluminum frames
- Dashboard with place for navigation electronics
- Engine dials: revolution counter, fuel gauge, warnings, rudder angle indicator, trim tab indicators
- Remote control: electric windlass, bow thruster, navigation lights, electric windscreen wipers and fog horns, electric dual engine controls
- Steering wheel
- Plastimo compass
- Double USB socket
- Double tilting pilot bench seat
- Removable floor step
- Sliding side door with direct access to catwalk

Owner's Cabin (Forward):

- Island berth (6' 6" berth length) w/ storage under
- Large sliding access door
- Mirror
- Hanging locker
- (1) cupboard with shelves
- (1) opening deck hatch with mosquito screen
- (2) hull windows with opening portholes and blinds

Head (Owner's Cabin):

- Separate shower compartment with seat and hull porthole
- Mirror
- Top and bottom cupboard
- Electric fresh-water toilet
- Oval washbasin
- (1) opening deck hatch with mosquito screen
- (1) hull portlight

VIP Cabin (Portside):

- (2) single beds convertible into double beds
- Bedside table
- Cupboard units
- Storage under berth
- 3-shelving unit
- Hull window with opening porthole and blind
- (1) 110V power outlet and (2) USB sockets
- Large mirror

Third Cabin (Starboard):

- Double berth
- Bedside table
- Storage under berth
- Opening hull porthole with blind
- Skylights

Head (Port Aft):

- Mirror
- Top and bottom cupboard
- (2) opening portholes
- Electric toilet flushing with fresh water and salt water
- Oval washbasin
- Mixer tap
- Separate shower

Engine

- Cummins QSB 6.7L twin engine with shaft propulsions
- 4-blade propellers
- Fuel tilters, sea water filters

- Engine room soundproofed with high density foam
- Air intake for cooling engine compartment
- Fire suppression system
- Double fuel tank filling cap
- (2) aluminum fuel tanks inter-connected and pre-fitted for fuel polishing system

Electricity

- Electrical panel (12V / 110V)
- Onan Generator 7.5KW (542 hours)
- Shore power socket (110V)
- (13) 110V sockets
- (12) USB sockets
- (2) double antenna sockets
- (4) 12V 140Ah service batteries
- (4) 12V 50Ah engine start batteries
- (4) 12V 50Ah bow thruster batteries
- (2) battery chargers 25 Ah
- (1) 12V power outlet
- Outside and inside lighting
- LED indirect lighting
- Outside lighting - nav lights, mooring light and stainless steel mountings
- Smoke detector

Electronics

Lower Helm:

- (2) Axiom Raymarine displays
- Lighthouse 3 (radar, depth sounder, fish finder, GPS plotter, stern video backup camera)
- Fusion stereo with MP3 player, USB, iPod player with (2) speakers in wheelhouse, (2) speakers in cockpit and (2) in speakers in flybridge

Steering System

- (2) underhung rudders in stainless steel
- Hydraulic steering
- Electric trim tabs
- Bow thruster
- Stern thruster

Plumbing

- (1) manual bilge pump in cockpit
- (2) automatic electric bilge pumps
- (1) pump for deck washing
- (1) whole freshwater supply
- Water unit for pressurizing the hot / cold water circuit and accumulator tank
- 40 L (11 gal) water heater working off engine exchanger and 110. V
- water tank filler



- (2) rotomolded water tanks
- Drainage outlet for black water holding tank

Inflatable

Aluminum hard-bottom Achilles inflatable dinghy with 20 hp 4-stroke Tahatsu outboard




Disclaimer

The company offers the details of this vessel in good faith but cannot guarantee or warrant the accuracy of this information nor warrant the condition of the vessel. A buyer should instruct his agents, or his surveyors, to investigate such details as the buyer desires validated. This vessel is offered subject to prior sale, price change or withdrawal without notice.



The 47's airy salon. Note the beefy handrails on the ladder to the flybridge.

Beneteau Swift Trawler 47 Test Report

	RPM	KNOTS	GPH	RANGE
SEAS: 2 ft.	1000	6.7	2.5	1367
	1500	9	7.3	629
	2000	11.8	16.9	356
	2250	15.6	20.9	380
	2600	19.4	29	341
	2900	23.7	39.2	308
	3080	25.8	43.4	303
	WATER: Full			















