



## No Rush

63' (19.20m) 2017 Prestige  
Fort Lauderdale Florida United States



### OVERVIEW

Manufacturer:	Prestige	Hull Material:	Fiberglass
Engines:	2 VOLVO	Cruise Speed:	Knots
Engine Model:	IPS950	Max Speed:	28 Knots
Engine HP:	725	Cabins/Heads:	3 / 4
Beam:	16' 9"	Fuel Type:	Diesel
Max Draft:	3' 5"	Fuel:	713.26 G (2700 L)
Water:	192.85 G (730 L)		

**\$1,345,000**



## Data Sheet

Category: Motor Yachts  
Condition: Used  
Model Year: 2017  
Documented Year: 2017  
Beam: 16'9" (5.13m)  
Max Draft: 3' 5" (1.05m)  
LOA: 62' 5" (19.03m)  
Cabins: 3  
Sleeps: 6  
Queen Berths: 2  
King Berths: 1  
Heads: 4

Crew Cabins: 1  
Crew Sleeps: 2  
Maximum Speed: 28 Knots  
Knots  
Range NM: 270  
Fuel Type: Diesel  
Hull Material: Fiberglass  
Air Conditioning: Yes

Stabilizers: Zero Speed  
Stabilizer Brand: Seakeeper  
SeaKeeper: Yes  
Bow Thruster: Yes  
Fuel Tank: 713.26 gal (2700 liters)  
Fresh Water: 192.85 gal (730 liters)  
Holding Tank: 60.23 gal (228 liters)  
Imported: Yes  
Interior Designer: Garroni Design  
Exterior Color: white  
HIN/IMO: IRIWB015G718

## Engines/Generators

### Engine 1

VOLVO  
IPS950  
725HP  
540.63KW  
Fuel: Diesel  
Hours: 450

### Engine 2

VOLVO  
IPS950  
725HP  
540.63KW  
Fuel: Diesel  
Hours: 450

## **Summary/Description**

Stop scrolling! With low engine hours, No Rush boasts twin Volvo IPS 950s with joystick control for easy docking, a gyro stabilizer, and luxury amenities. Includes three en-suite staterooms, upgraded appliances, and a fully-equipped flybridge & Brig Tender. Ready for a close-up?

2017 PRESTIGE 630 FLY

Class: Cruiser Hull Material: Fiberglass

Cabins: 3 Heads: 4

Fuel Type: Diesel Max Speed: 28 kn Cruising Speed: 24 kn Max Draft: 4'11 Range: 270 nm

No Rush is equipped with Volvo IPS 950s with joystick control, including a cockpit IPS joystick docking station. It features a gyroscopic SeaKeeper stabilizer for maximum comfort at sea. This vessel offers a three stateroom layout, each with an en-suite head and separate access to a master suite that boasts a king-size walk-around berth with a custom innerspring mattress. The two-person crew quarters have swim platform access. Additional amenities include an electronic hi-lo actuating table in the salon, upgraded wine refrigerator across from the galley, dishwasher in galley, and a washer/dryer underneath the companionway stairs.

The exterior features include a hydraulic swim platform with sliding tender chocks, underwater lights, and a stainless anchor with a sunbber cleat next to the automatic electric windless. The flybridge is equipped with a hydraulic electric bimini top, high-low electric hydraulic table with sun pad option, electric BBQ grill with cover, refrigerator, and a wet bar with storage.

Below deck, the full-beam master stateroom is located amidships, featuring individual air conditioning and heat controls, a BOSE 3 entertainment system, and a 40" flatscreen TV on an electric lift. The VIP stateroom and guest stateroom also offer luxury and comfort with innerspring mattresses and private or en-suite bathrooms.

Recent Services:

Cummins Onan Generator with sound shield (980 hours) 105,000 BTU Tropical air conditioning/heat Teak hydraulic swim platform Dockside water

# **Yacht Standard.**

## Information & Features

Volvo IPS 950 (Engine 1 & 2): Inboard, Diesel, 725 hp each, with joystick control. Dimensions: LOA: 62.42 ft, Beam: 16.83 ft  
Weights: Dry Weight: 54,608 lb Tanks: Fuel: 713 gal, Fresh Water: 188 gal, Holding: 55 gal

Accommodations:

Cabins: 3 Heads: 4

## **Highlights**

Gyroscopic SeaKeeper Stabilizer

3 Stateroom Layout, Each w/ En-suite head and Separate Access to Master Suite

2Person Crew Quarters w/ Swim Platform Access

Electronic Hi-Lo Actuating Table in Salon

Upgraded Wine Refrigerator Across from Galley

Dishwasher in Galley

Washer/Dryer Underneath Companionway Stairs

Stainless Anchor w/ Sunbber Cleat Next to Automatic Electric Windless

Opening Sunroof on Hard-Top

Hydraulic Swim Platform w/ Sliding Tender Chocks

Underwater Lights

Raymarine 48-inch Open Array HD Color Radar

Twin domes on hardtop

Three 15-inch Raymarine Glass Touchscreen Chartplotters at Lower Helm

Two 15-inch Raymarine Glass Touchscreen Chartplotters at Upper Helm

## **Salon**

White Oak hardwood flooring

Wenge wood finish

# **Yacht Standard.**

White leather sofa fabric

BOSE 525 Home Entertainment system

Electric high-low table

Villeroy & Boch dishes and cutlery for (8)

Central vacuum system Seating for (10) adults

## **Galley**

Full-size refrigerator/ freezer

Serving window to the cockpit

Electric cooktop stove

Microwave/ convection oven

## **Foredeck**

Double sun cushions

(4) Adjustable three-position bow seats

Windlass with line and chain

Remote searchlight

Stainless steel bow protector

Anchoring kit with stainless steel anchor

## **Aft Deck**

Hydraulic high-low table

Ice maker BOSE Speakers

(2) Director chairs

Teak decking Vertical electric sunshade

IPS Docking station with bow thruster control

Sliding glass entry doors

Bridge access with handrails

Hot and cold shower

Hydraulic swim platform controls

## **Electronics & Nav**

# **Yacht Standard.**

- Lower Helm: 3x Raymarine GS165 Color Displays, Quantum Radar, Auto Pilot, AIS Receiver, VHF, Volvo Dynamic Positioning Control
- Flybridge Helm: 2x Raymarine GS165 Color Displays, Radar, Auto Pilot, Sonar Module, AIS Receiver, VHF, Chain Counter

## **Mechanical & Deck Equipment**

- Cummins Onan Generator with Sound Shield (980 hours)
- 105,000 BTU Tropical Air Conditioning/Heat
- Teak Hydraulic Swim Platform
- Bow Thruster, Trim Tabs, Dockside Water

## **Electrical Equipment & Safety Extras**

- Generator, Inverter, Depthsounder, Radar, TV Sets (Samsung x 4), Autopilot, Radio, GPS, Cockpit Speakers, VHF
- Tender Brig 380 Center Console, Liferaft Viking RescYou

## **Master**

Custom factory structured bureau

Individual air conditioning and heat controls

King size walk-around berth with custom innerspring mattress

BOSE 3 Entertainment system 40" Flatscreen TV on an electric lift

(2) Fresh air opening portlights

Abundant storage and hanging lockers

Private bath with separate shower

## **VIP**

Centerline queen size berth with innerspring mattress

26" Flatscreen TV

Individual air & heat controls

Fresh air opening portlight

Private bath with stall shower

Abundant storage and hanging lockers

## **Guest**

Queen-size berth Individual air and heat controls

Fresh air opening portlight

Large hanging locker

## **Disclaimer**

The company offers the details of this vessel in good faith but cannot guarantee or warrant the accuracy of this information nor warrant the condition of the vessel. A buyer should instruct his agents, or his surveyors, to investigate such details as the buyer desires validated. This vessel is offered subject to prior sale, price change or withdrawal without notice.

## **Mechanical Disclaimer**

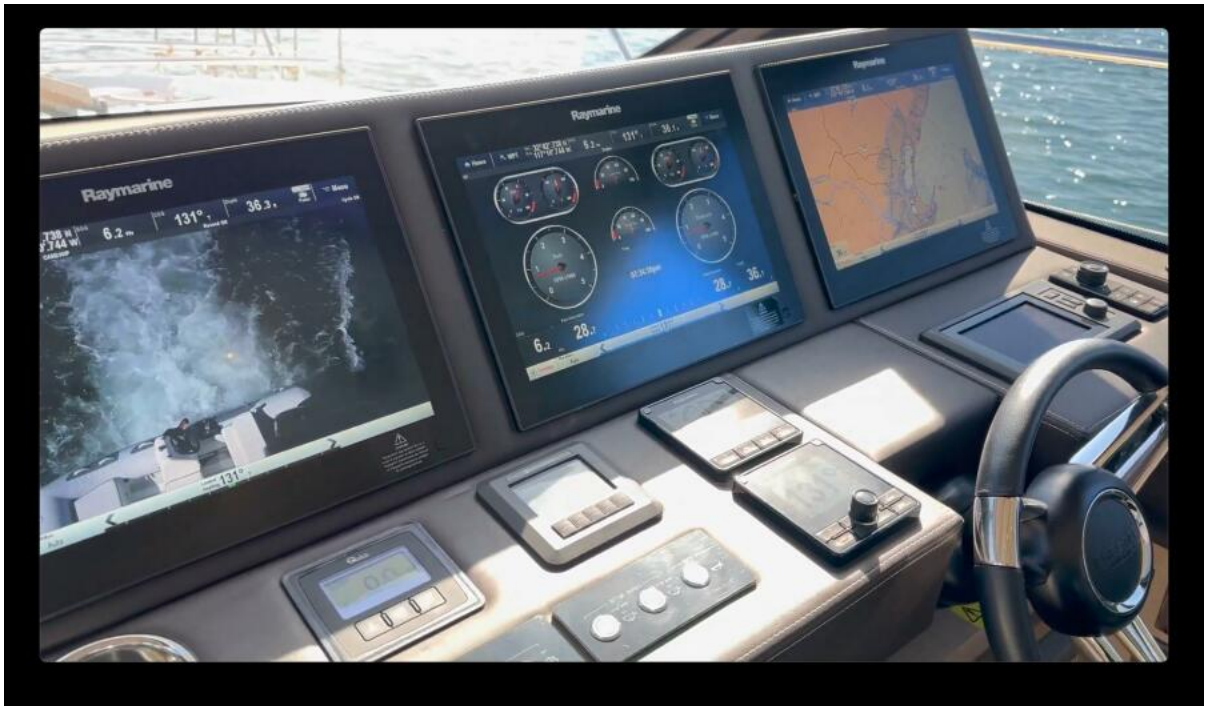
Engine and generator hours are as of the date of the original listing and are a representation of what the listing broker is told by the owner and/or actual reading of the engine hour meters. The broker cannot guarantee the true hours. It is the responsibility of the purchaser and/or his agent to verify engine hours, warranties implied or otherwise and major overhauls as well as all other representations noted on the listing brochure.



# Yacht Standard.

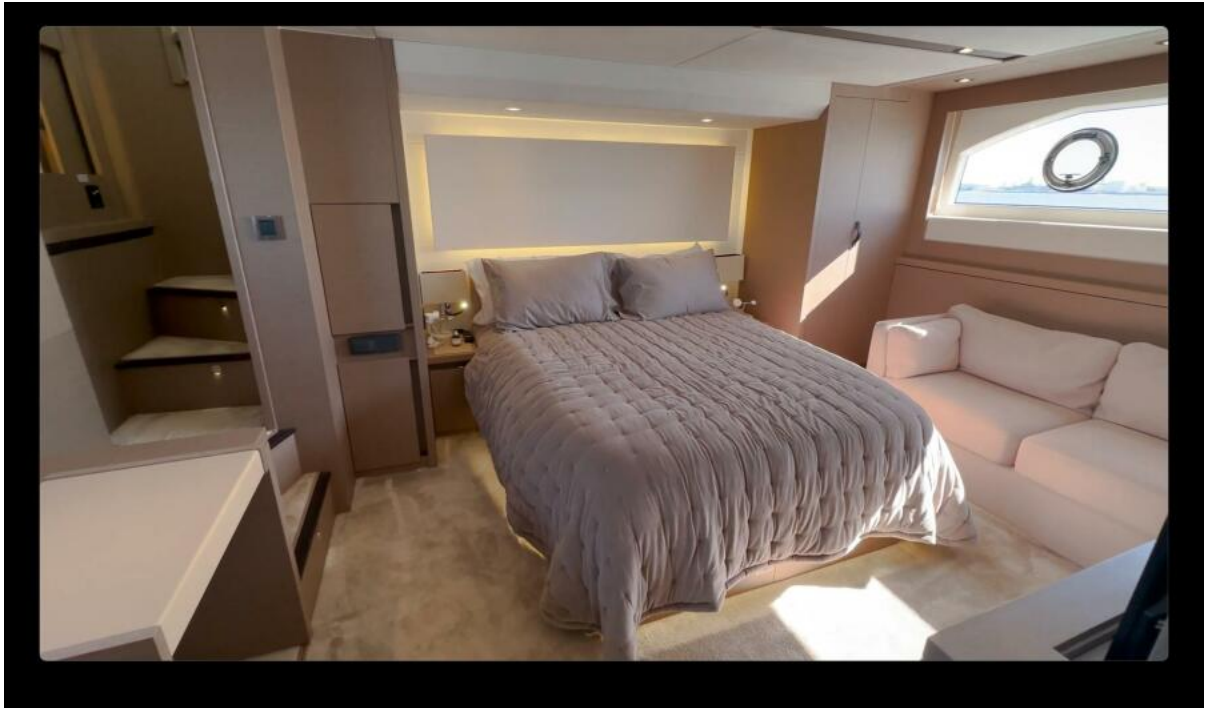


Running



Helm Station





Master



Galley



Engine Room



Top Down



# Yacht Standard.



Running Shot



Aft Deck



Salon



Salon angle