



38' (11.58m) 2021 Pardo Yachts 38  
Naples Florida United States

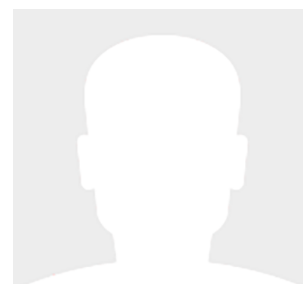


## OVERVIEW

**\$699,000**

Manufacturer: *Pardo Yachts*  
Engines: 3 Mercury  
Engine Model: 300  
Engine HP: 300  
Beam: 11' 10"  
Max Draft: 2' 11"  
Water:

Hull Material: Fiberglass  
Cruise Speed:  
Max Speed:  
Cabins/Heads: /  
Fuel Type: Gas/Petrol  
Fuel:



## Data Sheet

Category: Cruisers

Condition: Used

Model Year: 2021

Beam: 11'10" (3.61m)

Max Draft: 2' 11" (0.89m)

LOA: 39' (11.89m)

Fuel Type: Gas/Petrol

Hull Material: Fiberglass

HIN/IMO: CDP3181A121

## Engines/Generators

### Engine 1

Mercury

300

Outboard

300HP

223.71KW

Fuel: Gas/Petrol

Hours: 200

### Engine 2

Mercury

300

Outboard

300HP

223.71KW

Fuel: Gas/Petrol

Hours: 200

### Engine 3

Mercury

300

Outboard

300HP

223.71KW

Fuel: Gas/Petrol

Hours: 200



## Summary/Description

The 2021 Pardo 38' stands as a paragon of maritime craftsmanship, merging performance with luxury in a seamless manner. Nestled in the serene waters of Naples, FL, this vessel represents more than just a means of navigation; it's a testament to high-end boating. With a mere 200 hours clocked on its

### Introduction: The Epitome of Nautical Excellence

The 2021 Pardo 38' stands as a paragon of maritime craftsmanship, merging performance with luxury in a seamless manner. Nestled in the serene waters of Naples, FL, this vessel represents more than just a means of navigation; it's a testament to high-end boating. With a mere 200 hours clocked on its triple 300hp Mercury Outboards, it boasts a rarely matched, 'like new' condition. The recent completion of its 200-hour service not only reinforces its pristine state but also assures reliability for its new owner. Its storage within an indoor rack system further speaks to the meticulous care it has received, preserving its integrity and allure.

### Low Hours and Meticulous Maintenance: A Benchmark of Reliability

A key highlight of this Pardo 38' is its remarkably low usage. With just 200 hours on its powerful engines, it's a rare find in the pre-owned market, akin to acquiring a nearly new vessel. This minimal usage is a significant selling point, as it implies less wear and tear, extended longevity, and an almost untouched level of performance. The recent comprehensive 200-hour service is a testament to its meticulous upkeep. This service ensures every aspect of the boat, from the engine to the smallest operational detail, functions at its optimal level. This preventive maintenance is crucial for preserving the boat's value and ensuring a hassle-free experience for the new owner. The maintenance record is a clear indicator of the attention and care invested in this vessel, promising peace of mind and a sense of security for its future excursions.

### Advanced Technology and Navigational Features: Steering into the Future

The 2021 Pardo 38' is a beacon of modern maritime technology. The vessel is equipped with a state-of-the-art chart-plotter, an essential tool for modern navigation. This advanced system not only provides precise location tracking but also integrates various data streams for a comprehensive understanding of the marine environment. The onboard Quick Gyro Stabilizer is another marvel, significantly reducing the roll of the boat and enhancing comfort during navigation, especially in choppy waters. This technology is particularly crucial for those who prioritize a smooth sailing experience.

Additionally, the boat features a robust electric trefoil anchor system, simplifying the anchoring process with its efficiency and reliability. The Kohler Generator, with its digital control panel, stands as a bastion of power supply, ensuring that all onboard systems operate seamlessly. The integration of LED lights, both for aesthetics and functionality, not only enhances the boat's appearance but also serves a critical role in visibility during evening voyages. The inclusion of these technological amenities underlines the boat's modernity, offering a blend of luxury and practicality that is hard to find.

### Engine Performance: Unleashed Power with Efficiency

At the heart of this Pardo 38' are its triple 300hp Mercury Outboards, a powerhouse that offers an exhilarating blend of speed and efficiency. These engines, with their low operational hours, are just warming up to their potential, promising many more years of reliable service. The power of these engines does not come at the cost of efficiency. They are designed to provide maximum thrust with minimal fuel consumption, making this boat not only fast but also economical in the long run. The recent 200-hour service ensures that each engine is tuned to perfection, with all components working in harmony to deliver a smooth and powerful performance. This combination of low hours, high power, and efficient performance makes this vessel a coveted choice for those who seek both thrill and practicality on the water.

## Design and Cabin Features: A Blend of Elegance and Comfort

While the technical aspects of the Pardo 38' are indeed impressive, its design and cabin features are equally noteworthy. The boat's exterior boasts a stunning color combination, with a black waterline that accentuates its sleek profile. The carbon fiber black T-Top not only adds to its aesthetic appeal but also provides essential protection from the elements. The silvertex upholstery exudes luxury, offering both beauty and durability.

The interior of the boat is a haven of comfort and elegance. The master cabin is a cozy retreat, featuring high-quality furnishings and ample space. The inclusion of a head with an electric toilet and shower, coupled with a fresh hot/cold water system, adds a layer of convenience and luxury. The aft cabin provides additional sleeping space, making this boat not only a day cruiser but also suitable for extended stays.

## Accommodations

- (2) Stateroom (1) Head layout
- Exterior seating fore & aft to easily accommodate 12 people
- Joystick docking controls
- Bow thruster
- Synthetic teak deck
- Skyhook
- Interceptors
- Mercury active trim
- Quick gyro stabilizer
- Simrad glass cockpit

## Cockpit

- Electric Hi-Low Teak Table
- Transformable aft subbed in cockpit
- (2) Rows of seating in cockpit
- (2) Extra fridges in aft bench
- Electric BBQ Instead of cooktop
- Silvertex Upholstery
- JL Audio Speaker

## Deck Equipment

- Aft awning with carbon removable poles
- Carbon Fiber Hardtop
- Synthetic teak deck
- Bow awning with carbon removable poles
- Bow Thruster
- Shore Power Cord

- Washdown
- Courtesy Lighting
- Underwater Lighting

## Salon

- Grey oak interior
- Aft cabin storage cabinets
- Storage drawers & Cabinets

## Galley

- Galley up
- Electric BBQ Upgrade
- Sink
- Refrigerator
- Storage Cabinet
- Trash bin

## Master Stateroom

- FWD Master Berth - Full size
- Skylight/Escape hatch
- Storage drawers under bed
- Reading lights
- Overhead lights
- AC Control
- Port & Stbd Windows
- USB Outlets

## VIP Stateroom

- Aft Bunk Bed
- (2) Twin Berths
- Vent window
- Storage cabinets
- AC Vents
- Storage Drawers

## Master Head

- Wet Head
- Shower
- Sink

- Storage
- Electric Head

## Electronics/Engines/Navigation

- Mercury Joystick for 3 engines, incl. autopilot and SKYHOOK dynamic anchoring
- Stabilizer (gyroscope)
- ZipWake 4 unit trim tabs
- Custom Tropical AC
- Generator 6kW Kohler
- SIMRAD NSO EVO3 Glass Bridge 16" GPS-
- SIMRAD RS90S VHF with Antenna
- SIMRAD RADAR HALO-20 plus radome

## Disclaimer

The company offers the details of this vessel in good faith but cannot guarantee or warrant the accuracy of this information nor warrant the condition of the vessel. A buyer should instruct his agents, or his surveyors, to investigate such details as the buyer desires validated. This vessel is offered subject to prior sale, price change or withdrawal without notice.









