



40' (12.19m) 2022 Beneteau Oceanis 40.1
Muskegon Michigan United States



OVERVIEW

Manufacturer:	Beneteau		
Engines:		Hull Material:	Fiberglass
Engine Model:		Cruise Speed:	Knots
Engine HP:		Max Speed:	Knots
Beam:	13' 9"	Cabins/Heads:	3 / 1
Max Draft:	"	Fuel Type:	Diesel
Water:		Fuel:	52 G (196.84 L)

Call for Price



Data Sheet

Category: Cruisers
Subcategory: Cruiser-Racer
Condition: New
Model Year: 2022
Beam: 13'9" (4.19m)
Min Draft: 5' 6" (1.68m)
LOA: 42' 3" (12.88m)
LWL: 38' 5" (11.71m)
Cabins: 3
Sleeps: 8
Heads: 1

Knots
Knots
Fuel Type: Diesel
Hull Material: Fiberglass
Hull Shape: Displacement
Air Conditioning: Yes

Displacement: 17600 lbs
Bow Thruster: Yes
Fuel Tank: 52 gal (196.84 liters)
Holding Tank: 139 gal (526.17 liters)
Imported: No
Exterior Color: White
In Stock: Yes

Engines/Generators

Summary/Description

NEW - 2022 Model in stock in Muskegon

Manufacturer's description

Following in the wake of her elder sister the Oceanis 51.1, this 40-foot cruiser, with a new hull design by Marc Lombard, offers unrivalled deck volume and interior space with no concessions to performance.

With the innovative flared hull design of the Oceanis 40.1, and steps extending over a third of the bow, BENETEAU has broken new ground but made no concessions.

The result is a hull that has true speed potential and is stiff under sail. Above the waterline, her deck plan and ultra-spacious interior are unheard of on a boat this size!

The ergonomics and easy movement in the cockpit make life on board as simple as possible. The transom easily converts to an extensive swim platform, similar in size to the ones you'll find on the largest Oceanis cruising yachts.

Down below, the hatches and many hull and coachroof portholes fill the boat with natural light and ventilation, bringing an exceptionally airy feeling to the interior, as well as the unmistakable sensation you are entering a much larger yacht!

The C-shaped galley to starboard offers lots of storage and a spacious worktop. On the port side, there is a large salon with a table and a removable bench. A chart table at the base of the companionway provides additional working space, and the easy flow of motion between the different areas of the interior will make both couples and large families feel just like at home.

For more information from Beneteau, copy and paste this link into your browser:

<https://www.beneteau.com/us/oceanis/oceanis-401>

Options from Manufacturer

YANMAR 4JH45 CR SHAFT LINE 33KW (45HP) DIESEL

SHALLOW CAST IRON KEEL

3 CABINS 1 HEADS VERSION - WALNUT ALPI

NEO 05 - UPHOLSTERY IN SALOON

David Fulbright dave@sailplace.com

1-616-696-0250

COMFORT TRIM LEVEL

UPWIND AND DOWNWIND PACK

OFFSHORE PACK - B&G

KEELED BOAT

ELECTRIC GENOA SHEET WINCHES H46.2STA EH/46.2STA

ELECTRIC PORT COACH ROOF WINCH H40.2STA EH/40.2STA

AFT FAIRLEADS

MOORING-ANCHORING KIT

CADET GREY STEERING WHEEL COVERS

ELECTRICALLY OPENING BATHING PLATFORM + REMOTE CONTROL

OUTBOARD ENGINE BRACKET

LUXE POLYESTER-WOOD COCKPIT TABLE - CADET GREY COVER

ACCESS OPENINGS TO PORT AND STARBOARD

COCKPIT CUSHIONS DOLCE 51

RETRACTABLE BOW THRUSTER

DOCK WATER INLET

EXTRA WATER TANK (330 L / 87 US GAL)

WASHBASIN FURNITURE IN FORWARD CABIN

MICROWAVE OVEN 115V60

24 000 BTU AIR CONDITIONING

DOUBLE BERTH IN SALOON

ELECTRIC TOILET QUIET FLUSH - STARBOARD AFT

INVERTER 2000VA 12V - 115 V

3 FOLDING BLADES PROPELLER

WHITE HULL STD

ENGLISH OWNER'S MANUAL

B&G HALO 20+ RADAR

H60 WIRELESS VHF SET - B&G

AIS 500 B&G



OPENING PORTHOLE IN THE COCKPIT FOR AFT CABINS

PLEATED BLIND FOR HULL PORTHOLES IN SALOON

TEAK COCKPIT FLOOR

Disclaimer

The company offers the details of this vessel in good faith but cannot guarantee or warrant the accuracy of this information nor warrant the condition of the vessel. A buyer should instruct his agents, or his surveyors, to investigate such details as the buyer desires validated. This vessel is offered subject to prior sale, price change or withdrawal without notice.



BROCHURE PHOTO (1)



BROCHURE PHOTO (2)



BROCHURE PHOTO (3)



BROCHURE PHOTO (4)



BROCHURE PHOTO (5)



BROCHURE PHOTO (6)



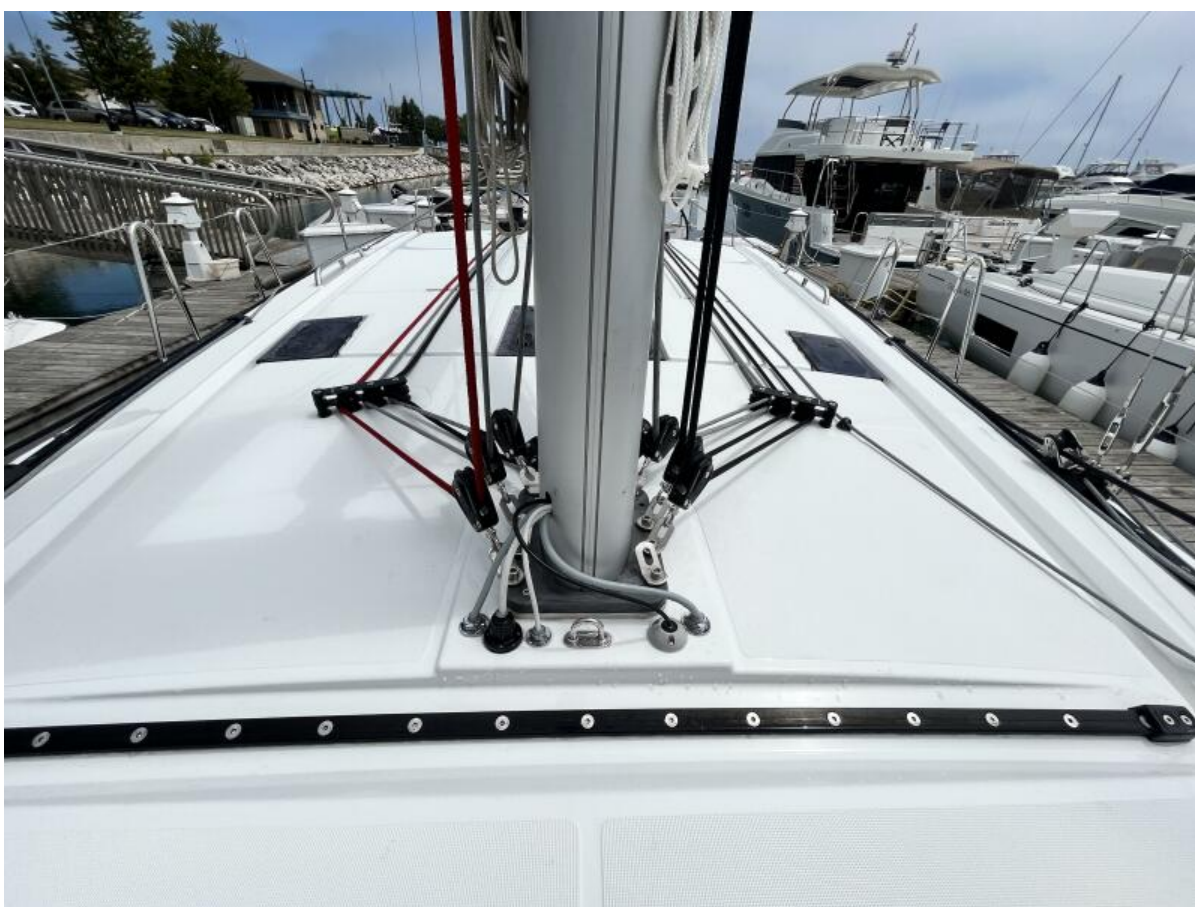
BROCHURE PHOTO (7)



2_Deck (2)



2_Deck (3)



2_Deck (4)



2_Deck (5)



3_Cockpit (1)



3_Cockpit (2)

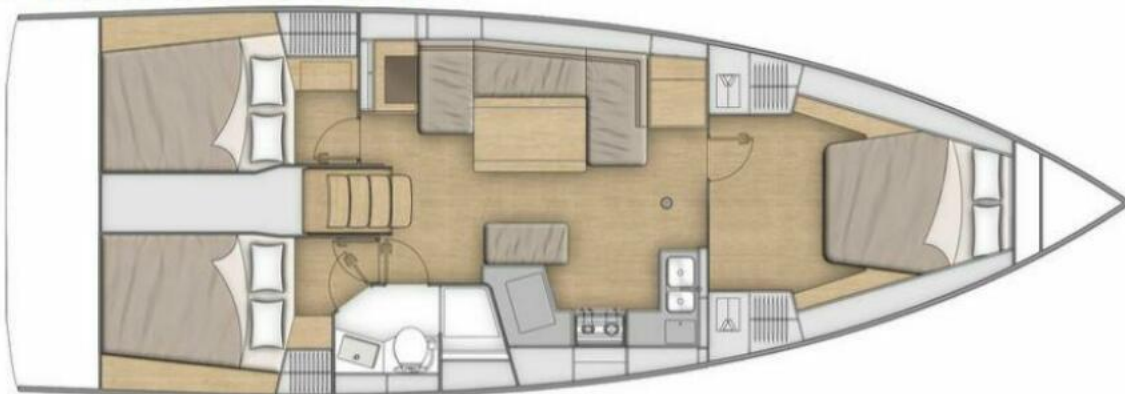


3_Cockpit (3)



3_Cockpit (4)

3 cabins 1 head version



4_Interior Layout



4_Main Salon (1)



4_Main Salon (2)



4_Main Salon (3)



4_Main Salon (4)



4_Main Salon (5)



4_Main Salon (6)



4_Main Salon (7)



4_Main Salon (8)



4_Main Salon (9)



5_Galley (1)



5_Galley (2)



6_Forward Cabin (1)



6_Forward Cabin (2)



6_Forward Cabin (3)



6_Forward Cabin (4)



7_Port Aft Cabin (1)



7_Port Aft Cabin (2)



8_Strbd Aft Cabin



9_Head (1)



9_Head (2)



9_Head (3)



9_Head (4)