



TOOT

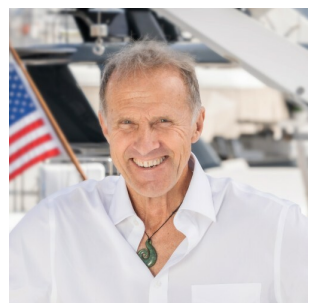
46' (14.02m) 1988 Little Harbor
Newport Rhode Island United States



OVERVIEW

Manufacturer:	<i>Little Harbor</i>		
Engines:	1 Yanmar	Hull Material:	Fiberglass
Engine Model:	4JH3-TE-YEU	Cruise Speed:	7 Knots
Engine HP:	75	Max Speed:	8 Knots
Beam:	13' 8"	Cabins/Heads:	2 / 2
Max Draft:	11' 0"	Fuel Type:	Diesel
Water:	140 G (529.96 L)	Fuel:	140 G (529.96 L)

\$260,000



Murray Lord Murray@WorthAvenueYachts.com

+1 (401) 225-6345

Data Sheet

Category: Cruisers
Condition: Used
Model Year: 1988
Documented Year: 1988
Beam: 13'8" (4.17m)
Max Draft: 11' (3.35m)
Min Draft: 5' 2" (1.57m)
LOA: 46' (14.02m)
Cabins: 2
Sleeps: 6
Single Berths: 2
V Berths: 1
Double Berths: 2
Heads: 2

Maximum Speed: 8 Knots
Cruise Speed: 7 Knots
Fuel Type: Diesel
Hull Material: Fiberglass
Hull Shape: Monohull
Hull Finish: AWLGRIP

Displacement: 32500 lbs
Fuel Tank: 140 gal (529.96 liters)
Fresh Water: 140 gal (529.96 liters)
Holding Tank: 62 gal (234.7 liters)
Builder: Little Harbor
Designer: Ted Hood
Exterior Color: Flag Blue
HIN/IMO: LHB46010D888

Engines/Generators

Engine 1

Yanmar
4JH3-TE-YEU
Inboard
75HP
55.93KW
Fuel: Diesel
Hours: 3405
Hours Date: 04-24-2024

Summary/Description

TOOT is a 46' (14.02m) yacht, built by Little Harbor and delivered in 1988. This vessel sleeps up to 6 guests in 2 staterooms.

Main Salon

TOOT's main salon is large for her size, as well as being bright and airy due to the numerous overhead hatches and opening ports in the cabin trunk.

The salon features a pull-out berth on the port side with a small teak coffee table. A custom glass cabinet is mounted on the forward bulkhead for crystal storage along with stereo speakers and air conditioning controls.

Little Harbor hull ports both port and starboard complement the unique ambience of TOOT's salon.

To starboard is a circular teak table with a half-circle green leather couch which provides plenty of seating for meals. Just aft of the salon seats is a Majestic flat screen TV. A brass clock and barometer are also mounted on the forward bulkhead.

Accommodations

Two private staterooms: Owner's ensuite cabin aft with centerline queen berth, and double guest cabin forward, with pull-out settee berth in salon for a total of six berths.

TOOT has a beautiful highly finished varnished teak interior with exquisite joinery throughout and floors made of teak and holly.

Aft Owner's Cabin

The owner's stateroom aft features a centerline queen berth surrounded by comfortable seating on both port and starboard sides. Storage is plentiful with lockers and cubbies, plus a generous cedar-lined hanging closet to port. Most lockers have built-in lights which turn on upon opening. A center mirror and vanity are located on the forward bulkhead in front of the bed, and the ensuite head is forward to port with a separate large stall shower and wet locker. Fine teak joinery is evident throughout.

Forward Stateroom

Forward is a large private stateroom with generous V-berth with filler for converting to a comfortably sized double bed. There is a large hanging locker with auto light and full head and shower facilities to port. Ample storage lockers are located above the berth on the hull deck joint. Plenty of drawers for adequate storage are also found in this cabin. Two Frigast reading lamps, a 12-volt fan and two overhead lamps complete this stateroom.

Galley

The galley is located on the starboard side walk-through to the aft owner's cabin.

- Double stainless-steel sinks
- Corian counters
- Grunert refrigeration / freezer
- Unique Little Harbor corner door provides excellent access to rear of refrigeration unit, with plastic storage shelves on face of door
- Gimbaleed stainless steel Force 10 4-burner gas stove
- Numerous lockers and drawers

Deck

- Hot/cold freshwater shower in locker
- Stainless-steel dinghy davits
- Custom teak outboard engine mount
- Full set exterior Sunbrella teak covers
- Full Fairclough yacht cover
- Bimini with window over helmsman station
- Custom dodger with grab rails
- Maxwell windlass 60 lb. CQR anchor
- Spreader lights
- Custom fold-down swim ladder
- 4 x Tinted Lexan hull ports
- Navtec hydraulic back stay
- Navtec hydraulic boom vang
- 25-gallon hot water heater
- 17 x Stainless steel opening ports
- 6 x Stainless steel hatches
- Solid teak emergency tiller
- 4 x Fenders

Hull and Construction

- Hand-laid fiberglass hull with Airex core construction
- Molded-in fiberglass fuel tanks, water tanks and centerboard trunk
- Internal cast lead ballast
- Hand-laid fiberglass deck with divinyl cell core construction and 5/8 teak overlay
- Varnished teak exterior trim with highest quality stainless steel port lights, hatches and cowl ventilators
- Awlgripped rub rail with stainless striker
- Flag Blue Awlgrip hull
- Centerboard for enhanced sailing offers 5'-2" draft with board up and maximum draft of 11' with board down
- Dedicated propane locker
- Rope lockers by cockpit
- Outboard engine lift hoist
- Cockpit shower with hot and cold water
- Dinghy davits on aft deck

Sails and Rigging

- Hood electric Stowaway system
- Furling genoa
- Mast and boom painted (2016)
- Navtec hydraulic boom vang and backstay with failsafe turnbuckles and 2-function panel in cockpit
- Solid rod rigging

Winches

- 2 x Barent 32ST electric primaries
- 2 x Barent 28ST secondary winches
- 2 x Barent 27ST mainsheet winches
- 2 x Lewmar 30 halyard winches at mast

Electrical System

- Bass main switch panel with 12- and 110-volt circuit breakers

- Reverse-cycle Marine Air conditioning system 12000 BTUs
- 110V 50-amp shore power inlet
- 120V 30-amp shore power inlet
- Shore supply freshwater connector
- Marico TV/ phone connector 1
- 2-volt 8A4D Engine start battery
- 6 x GC2-ECL-UT 225 AH house batteries
- Provision for emergency engine start via jump switch
- Engine blower
- Navigation and night vision lights throughout vessel
- Waterproof 12-volt outlet on deck
- 110V outlets throughout interior and in cockpit
- Automatic lights in hanging lockers and refrigerator and freezer
- High-output alternator for house batteries

Mechanical System

- Newer Yanmar model 4JH3-TE-YEU 75 HP total 3405 hours (April 2024)
- Newer Westerbeke generator (replaced 2007) with 1185 hours (April 2024)
- 3-blade max prop
- Spur line cutters

Navigation

The aft-facing navigation station, with seat and chart table, is located on the port side aft of the salon and is beautifully detailed and well-equipped with the necessary complement of navigation gear and electronics, stereo, VHF, and breaker panel.

Safety

- 2 x Horseshoe rings
- Life jackets

Exclusions

All personal property is excluded unless specifically identified and included in the sale agreement and listing specifications. Personal property refers to all items not permanently attached to the vessel including but not limited to

artwork, furnishings, and recreational or entertainment items. Advertisements, marketing materials, and/or other photography may depict the vessel with personal property, however, such personal property is excluded unless otherwise specifically included as provided herein.

Disclaimer

The company offers the details of this vessel in good faith but cannot guarantee or warrant the accuracy of this information nor warrant the condition of the vessel. A buyer should instruct his agents, or his surveyors, to investigate such details as the buyer desires validated. This vessel is offered subject to prior sale, price change or withdrawal without notice.



Aft Deck



Helm



Helm



Helm And Cockpit



Cockpit and Dodger



Dodger



Helm with Wheelcover



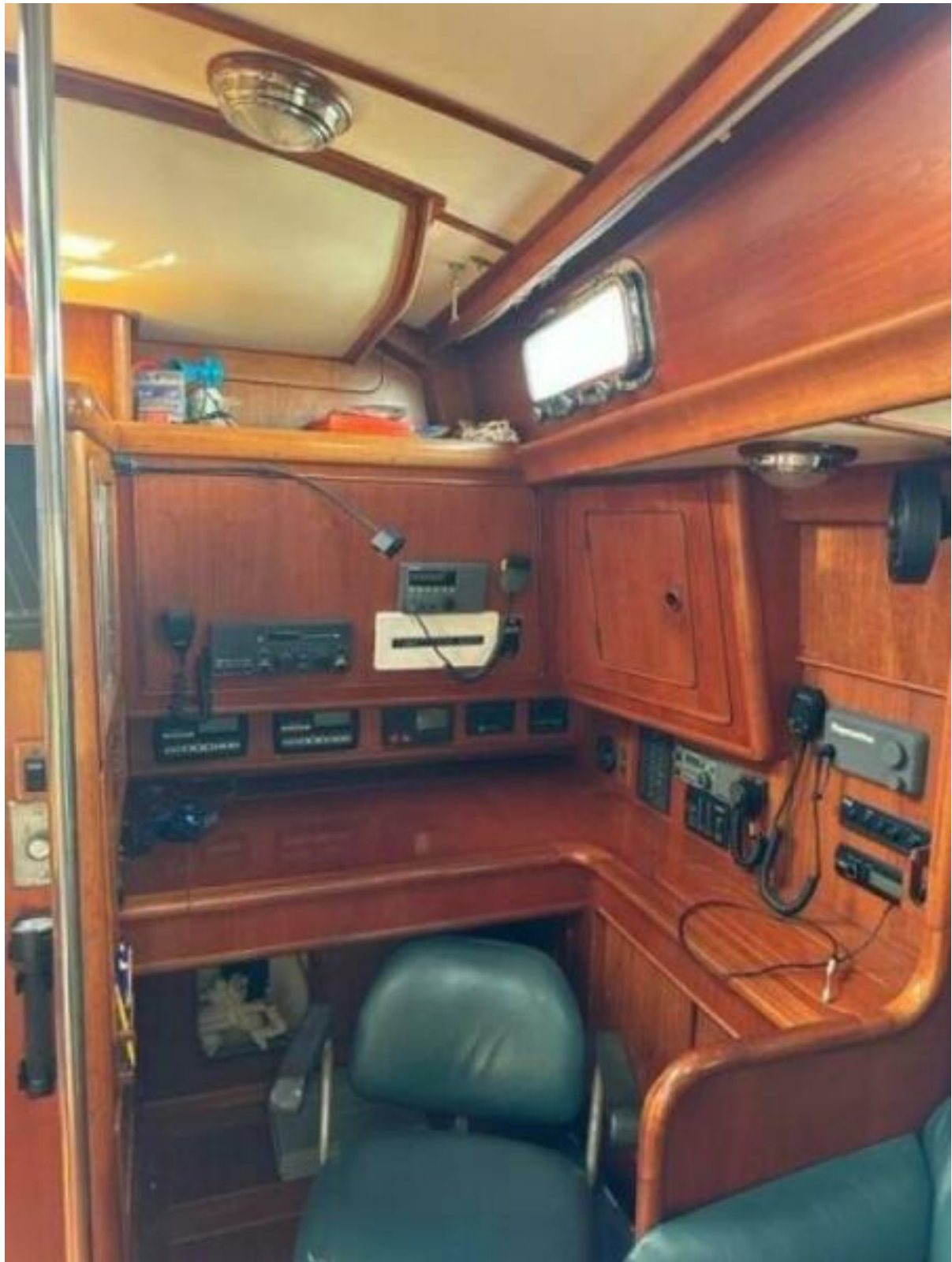
Main Saloon



Settee



Saloon TV



Nav Station



Nav Station



Galley Stove



Freezer



Fridge



V Berth



V Berth



V Berth



Galley



Master



Master



Master Starboard Side



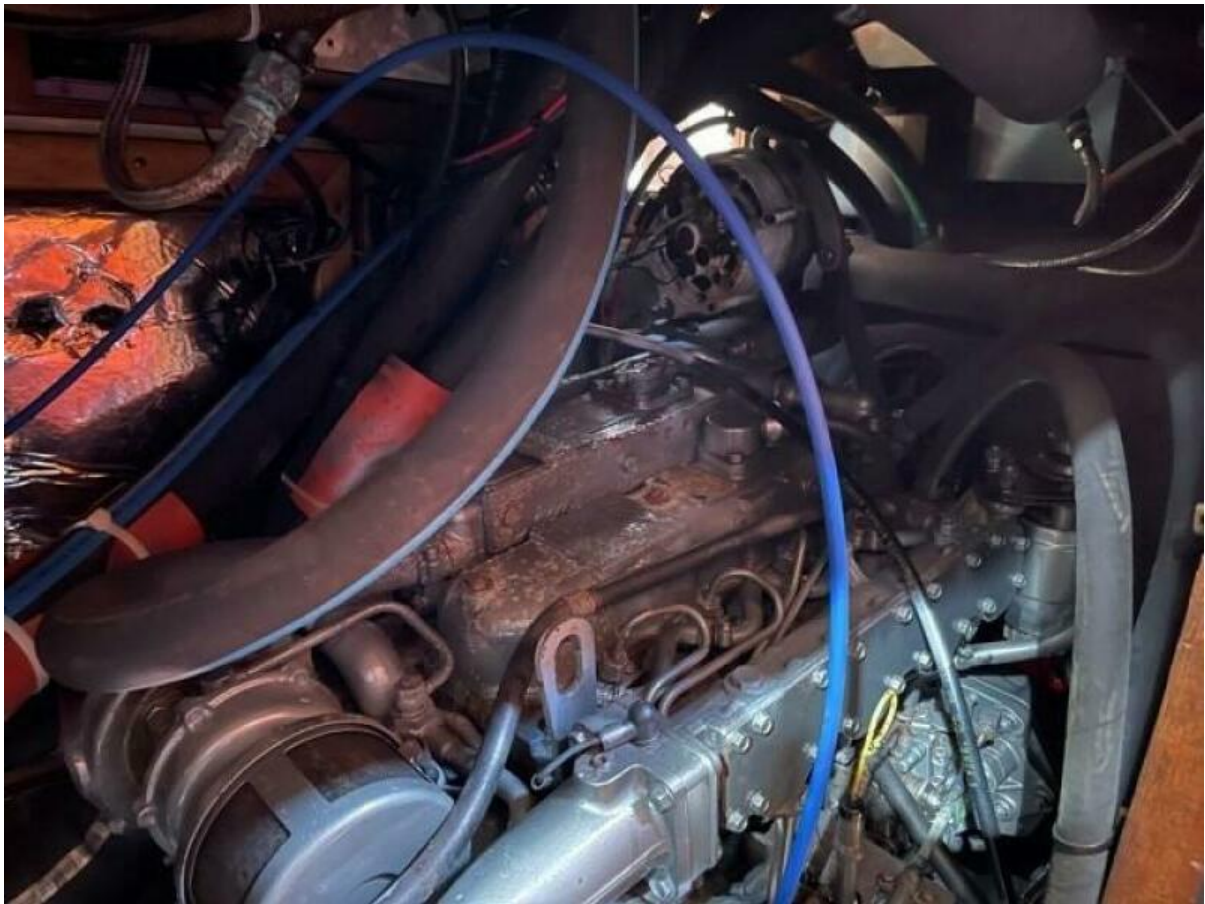
Master Portside



Ensuite



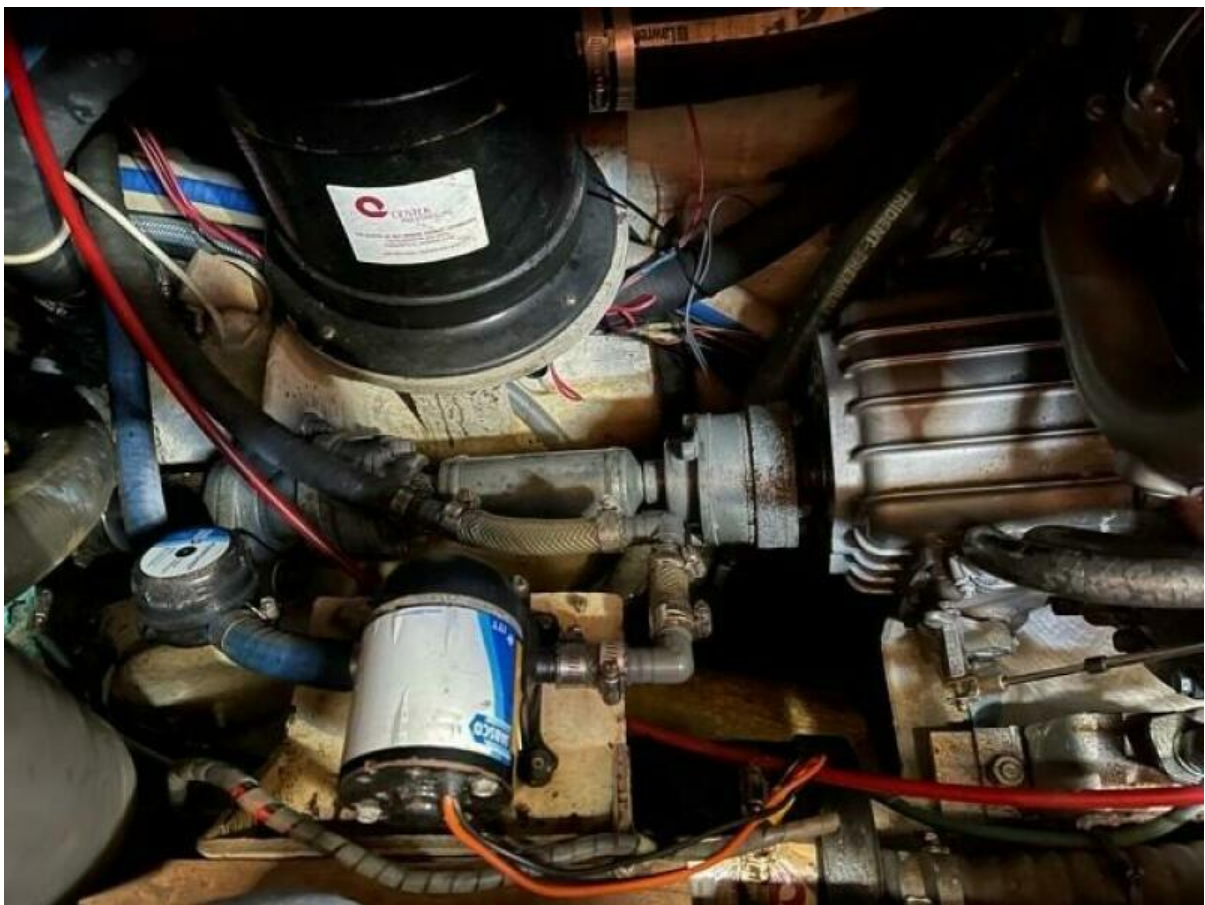
Ensuite Shower



Engine



Engine



Gearbox



Engine Hours



Generator Hours



Foredeck



Forward Locker



Foredeck looking Aft