



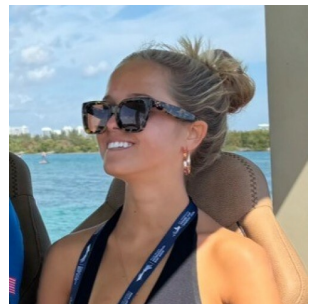
22' (6.71m) 2021 Pioneer 222 Sportfish
Pompano Beach Florida United States



OVERVIEW

Manufacturer:	Pioneer	Hull Material:	Fiberglass
Engines:	1 Suzuki	Cruise Speed:	25 MPH
Engine Model:	DF250	Max Speed:	48 MPH
Engine HP:	250	Cabins/Heads:	/ 1
Beam:	8' 7"	Fuel Type:	Gas/Petrol
Max Draft:	"	Fuel:	97 G (367.18 L)
Water:			

\$75,000



Data Sheet

Category: Center Consoles
Subcategory: Tender
Condition: Used
Model Year: 2021
Beam: 8'7" (2.62m)
Min Draft: 1' 2" (0.36m)
LOA: 22' 1" (6.73m)
Heads: 1

Maximum Speed: 48 MPH
Cruise Speed: 25 MPH
Fuel Type: Gas/Petrol
Deadrise: 20°
Hull Material: Fiberglass
Hull Shape: Deep Vee
Max Passengers: 10

lbs
Dry Weight: 2900 lbs
Fuel Tank: 97 gal (367.18 liters)
Imported: No
Builder: Pioneer

Engines/Generators

Engine 1

Suzuki
DF250
Outboard 4 Stroke
250HP
186.43KW
Fuel: Gas/Petrol
Hours: 216
Year: 2021
Serial #: 25003F-041929
Location: Middle

Summary/Description

2021 Pioneer 222 Sportfish

This 2021 Pioneer 222 Sportfish is loaded with every option. Everything has been maintained with an open checkbook with recent services and records available.

- 2021 Suzuki 250Hp Outboard (216 Hours)
- JL Audio Stereo
- Hard T-Top
- Simrad Electronics
- Seastar Hydraulic Tilt Steering
- Insulated Forward Fish Box
- Recirculating Livewell
- Lenco Trim Tabs
- Port and Starboard Swim Platform

Manufacturer Provided Description

The 222 Sportfish with its tournament inspired 32 gallon live well, 96 gallon fuel capacity, twin insulated fish boxes, and fully bolstered cockpit with tow rails, is one magnificent fishing machine. The clean, open deck configuration allows for flexibility and roominess that many boats in its class simply don't deliver. The 222 Sportfish has power, with up to 300HP, insuring that you will have plenty of speed to get where you need to be in a hurry or to have plenty of towing power for the skiers and tubers in your life.

Vessel Walkthrough and Details

Standard Equipment:

- Deluxe Fiberglass Lean Post with 5 Rod Holders
- Dual Gunwale Rod Storage with Bolster Cushions and Toe Rail
- Digital Gauges
- 1500-Gph Bilge Pump with Auto Float Switch
- 97-Gallon (Usable Fuel Tank)
- Step-Down Console with Porta Potty
- 12-Volt On Dash Power Outlet
- Seastar Hydraulic Tilt Steering
- 80-Qt. Engel Cooler with Cushion
- 1" SS Console Rail with Grab Rail
- Molded Non-Skid Inner Liner
- 6" Springline Pull-Up Cleats
- Twin 6" Forward Pull-Up Cleats
- 6" SS Rear Deck Cleats with Hawse Pipe
- Full Low Profile Bow Rail
- Rear Folding Jumpseats
- Lighted Compass
- Self-Bailing Cockpit
- Anchor Locker

- Dual Battery Switch
- Courtesy Lights
- SS Inserted Deluxe Rub Rail
- SS Cup Holders (6)
- Removable Windshield
- SS Deck Hinges and Thru Hulls
- SS Wheel with Speed Knob
- Twin Insulated Forward Fish Boxes
- Recessed Trim Tabs
- Swim Platform (Starboard)
- Swim Platform (Port)
- Trim Tabs with Indicator Light
- SS Prop

Performance:

- Fresh Water Wash Down Pump Kit
- Recirculating Live Well
- Marine Toilet Self Contained with Dockside Pump Out

Electronics:

- JI Audio Stereo with 4 Speakers
- Underwater Blue LED Lights

Comfort:

- Deluxe Hard Top Package (Radio Box, Navigation Light, 2 Aft Spreader Lights, 1 Forward Spreader Light, 4 Recessed Map Lights, King Fish Rod Holders and Outrigger Plates)
- Spray Shield
- Bow Cushion Set
- Forward Facing Backrests
- Foot Rest
- Jump Seat Backrests (Pair)

Hull Color:

- Steel Grey Hull

Mechanical Disclaimer

Engine and generator hours are as of the date of the original listing and are a representation of what the listing broker is told by the owner and/or actual reading of the engine hour meters. The broker cannot guarantee the true hours. It is the responsibility of the purchaser and/or his agent to verify engine hours, warranties implied or otherwise and major overhauls as well as all other representations noted on the listing brochure.

Disclaimer

The company offers the details of this vessel in good faith but cannot guarantee or warrant the accuracy of this information nor warrant the condition of the vessel. A buyer should instruct his agents, or his surveyors, to investigate such details as the buyer desires validated. This vessel is offered subject to prior sale, price change or withdrawal without notice.



