



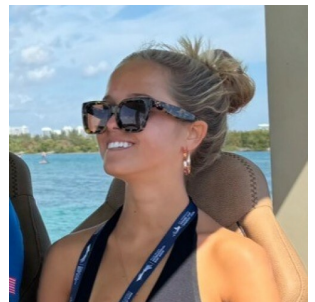
16' (4.88m) 2023 Scarab 165 ID  
Lantana Florida United States



## OVERVIEW

Manufacturer:	Scarab	Hull Material:	Fiberglass
Engines:	1 Rotax	Cruise Speed:	30 MPH
Engine Model:	170 ECT	Max Speed:	57 MPH
Engine HP:	170	Cabins/Heads:	/
Beam:	7' 1"	Fuel Type:	Gas/Petrol
Max Draft:	"	Fuel:	20 G (75.71 L)
Water:			

\$35,000



## Data Sheet

Category: Jet Boats  
Subcategory: Ski-Wakeboard Boats  
Condition: Used  
Model Year: 2023  
Beam: 7'1" (2.16m)  
Min Draft: 1' (0.30m)  
LOA: 15' 9" (4.80m)

Maximum Speed: 57 MPH  
Cruise Speed: 30 MPH  
Fuel Type: Gas/Petrol  
Deadrise: 21°  
Hull Material: Fiberglass  
Hull Shape: Modified Vee  
Bridge Clearance: 6' 6"  
Seating Capacity: 5  
Max Passengers: 5

lbs  
Dry Weight: 1600 lbs  
Fuel Tank: 20 gal (75.71 liters)  
Imported: No  
Builder: Scarab

## Engines/Generators

### Engine 1

Rotax  
170 ECT  
Inboard  
170HP  
126.77KW  
Fuel: Gas/Petrol  
Hours: 5  
Year: 2023  
Location: Middle

## Summary/Description

2023 Scarab 165 ID

2023 Scarab 165 ID

Awesome opportunity on a 2023 Scarab 165 ID. This vessel is loaded with tons of options and upgrades. Dry-Stored and fully detailed!

- Rotax 170 ECT (5 Hours)
- Stern Swim Platform
- LED Navigation Lights
- Cruise Control Mode
- JL Audio Speakers
- Color Scheme, Blue with Black Accent
- Custom-Contoured Vinyl Upholstery
- Swim Platform Lounge Seats
- Water Intrusion Management System

## Manufacturer Provided Description

Try shredding water in the 165 without breaking a smile—we bet you can't. Distinct styles, potent power, and a capacity for five put this jet boat at the forefront of exhilaration.

## Vessel Walkthrough and Details

### Hull and Deck:

- Bow and Stern Eyes, Stainless Steel
- Cleats, Stainless Steel
- Deck Color Scheme, Black
- Exterior Color Scheme, Blue with Black Accent
- Fiberglass Stringer System
- Swim Ladder
- Navigation Lights, LED
- Rub Rail with Stainless Steel Insert
- Swim Platform, Stern
- Windscreen

### Cockpit:

- Armrests, Port and Starboard
- Beverage Holders, Stainless Steel
- Courtesy Lights
- Fiberglass Liner, Skid-Resistant, Self-Draining
- Interior Color Scheme, White with Black Accent
- Seating, ComfortRide 3-Up Seats
- Seating, Swim Platform Lounge Seats
- Storage, Beneath Motorhood

- Storage, Bow and Cockpit, Beneath Seats
- Storage, In-Floor, Bow
- Upholstery, Notched Seat Cushions
- Upholstery, Custom-Contoured Vinyl with Elevated Edging
- Water Intrusion Management System

**Helm:**

- Cruise Control Mode
- Depth Finder
- Emergency Engine Shut-Off
- Instrumentation Helm: Fuel Level, Fuel Consumption, Tach, GPS Speed, Hour Meter, Compass, Oil, Volt, Overheat, Check Engine Lighted Switches
- Scarab Custom Gauge Cluster
- Steering Wheel, Deluxe, Tilt
- Storage for Small Electronics

**Entertainment:**

- JL Audio Speakers (6)

**Engine/Systems/Drive:**

- Battery Switch
- Bilge Pump, Automatic
- Engine Blower
- Engine Vents
- Flush Out Exhaust Kit
- Lateral Thrust Control
- Outlet, 12V
- Outlet, USB Charge Port
- Weedless Shaft Guard

**Canvas:**

- Bimini Top

**Power:**

- Rotax 170 ECT
- 30 MPH Cruise Speed
- 57 MPH Top Speed

**Mechanical Disclaimer**

Engine and generator hours are as of the date of the original listing and are a representation of what the listing broker is told by the owner and/or actual reading of the engine hour meters. The broker cannot guarantee the true hours. It is the responsibility of the purchaser and/or his agent to verify engine hours, warranties implied or otherwise and major overhauls as well as all other representations noted on the listing brochure.

**Disclaimer**

The company offers the details of this vessel in good faith but cannot guarantee or warrant the accuracy of this

information nor warrant the condition of the vessel. A buyer should instruct his agents, or his surveyors, to investigate such details as the buyer desires validated. This vessel is offered subject to prior sale, price change or withdrawal without notice.





