



# MISS STEPHANIE

138' (42.06m) 2004 Richmond Yachts  
Bahamas



## OVERVIEW

Manufacturer: *Richmond Yachts*  
Engines: 2 Caterpillar  
Engine Model: 3512B  
Engine HP: 2250  
Beam: 27' 11"  
Max Draft: 7' 7"  
Water: 1800 G (6813.74 L)

Hull Material: Fiberglass  
Cruise Speed: 12.5 Knots  
Max Speed: 16.5 Knots  
Cabins/Heads: 6 / 7  
Fuel Type: Diesel  
Fuel: 7526 G (28489 L)

**\$9,450,000**



Jim McConville jim@merlewood.com

954-849-0855



## Data Sheet

Category: Motor Yachts  
Condition: Used  
Model Year: 2004  
Refit Year: 2023  
Beam: 27'11" (8.51m)  
Max Draft: 7' 7" (2.31m)  
LOA: 138' (42.06m)  
Cabins: 6  
Sleeps: 12  
Twin Berths: 4  
Queen Berths: 3  
King Berths: 1  
Full Beam Master: Yes  
On Deck Master: Yes  
Heads: 7

Crew Cabins: 4  
Captain's Quarters: Yes  
Crew Sleeps: 8  
Maximum Speed: 16.5 Knots  
Cruise Speed: 12.5 Knots  
Fuel Type: Diesel  
Hull Material: Fiberglass  
Hull Shape: Semi Displacement

Gross Tonnage: 396  
tonnes  
Fuel Tank: 7526 gal (28489 liters)  
Fresh Water: 1800 gal (6813.74 liters)  
HIN/IMO: QXJC90011104

## Engines/Generators

### Engine 1

Caterpillar  
3512B  
Inboard  
2250HP  
1677.83KW  
Fuel: Diesel

### Engine 2

Caterpillar  
3512B  
Inboard  
2250HP  
1677.83KW  
Fuel: Diesel

### Generator 1

Northern Lights  
99KW



## Summary/Description

Constructed by Richmond Yachts in 2004, MISS STEPHANIE showcases a luxurious interior curated by the Pavlik Design Team and a dynamic exterior styled by the Setzer Design Group. Carefully maintained by both past and present owners, she underwent significant refits from 2018 to 2023, incorporating en

Constructed by Richmond Yachts in 2004, MISS STEPHANIE showcases a luxurious interior curated by the Pavlik Design Team and a dynamic exterior styled by the Setzer Design Group. Carefully maintained by both past and present owners, she underwent significant refits from 2018 to 2023, incorporating enhancements such as a new headliner, carpet, furniture, air conditioners, two generators, and various mechanical upgrades.

The vessel's timeless design, opulent furnishings, and a generous layout accommodating up to 12 guests in 6 staterooms create an ambiance of sophistication and grandeur, reminiscent of a much larger yacht. Complemented by a modern stabilization system, MISS STEPHANIE ensures comfort both underway and at anchor.

On the main deck, a full-beam master suite boasts a king-sized berth and his-and-hers ensuite facilities, while the VIP room on the bridge deck offers a queen berth and a spacious ensuite. The lower deck comprises two generously sized guest staterooms with queen berths and ensuites, along with two twin cabins featuring twin berths. All staterooms offer ample storage, closets, and entertainment systems.

Featuring a total of 1 king, 3 queens, and 2 sets of twins, MISS STEPHANIE stands as a distinguished charter vessel, captivating guests with her luxurious amenities and impeccable design.

Previously named "PENNY MAE" and "TCB," MISS STEPHANIE has undergone continuous maintenance and upgrades throughout her life. The vessel has seen major improvements from 2018 to 2023, detailed in the "Upgrades" section of this document. With a well-built structure and six staterooms offering remarkable space, Miss Stephanie provides an impressive main



saloon and sky lounge with large bars and ample seating. The bridge deck aft and sundeck offer excellent spaces for dining and outdoor entertainment, making her an ideal choice for private or charter purposes.

## WALK-THROUGH

The formal foyer entrance in the main salon can be reached by boarding the boat via steps on the starboard side forward. However, the more popular way to enter the vessel is through the boarding steps on either side aft or by using the passerelle to access the large covered aft deck. This deck is equipped with casual seating, making it an ideal spot for gathering and watching water sports activities that take place on the large swim platform. The swim platform can be accessed from either the port or starboard side, whether the boat is docked stern to a floating dock or approached by tender.

Once you enter the main salon from the aft deck through the custom-built double glass sliding doors, you will be greeted by an elegant and stylish lounge area that is perfect for entertaining guests. The entire space is spacious and offers excellent visibility, allowing you to enjoy the views while socializing. The lounge area also features a well-equipped bar, where you can enjoy your favorite drinks. Additionally, there is a seating area consisting of two large custom sofas, four comfortable armchairs that match the sofas, two lounge chairs with ottomans, and a table to the port aft. This seating arrangement provides a cozy spot for intimate conversations away from the larger group.

On this deck, you will also find the formal dining area, which is one of three options for dining aboard. A custom rectangular dining table that can accommodate up to ten guests, allows for enjoyable meals together. The dining area provides ample storage for China, crystal, and stemware in the glassware cabinet and buffet. Moreover, there is an automatic door to the port, serving as a service entrance between the galley and the dining salon, ensuring convenient and efficient service during meals.



Located forward to the port of the dining salon, you will find the large and well-equipped galley. This professional-grade kitchen is designed with functionality in mind and offers a seamless experience for the crew. The galley can be accessed from the mid-ship port side deck, allowing for easy access for the crew and stocking of galley supplies.

As you enter the butler's pantry from the dining area, you will find essential appliances such as an ice machine and a dishwasher. Moving into the galley itself, you will notice that all the appliances are stainless steel, giving the space a sleek and modern look. The galley is equipped with two large side-by-side Subzero refrigerators, ensuring ample storage for food and ingredients. Other appliances in the galley include a trash compactor, a steamer oven, dishwashers, a 2-drawer freezer, a cooktop, two double wall ovens, and a microwave. These high-quality appliances make it easy for the crew to prepare delicious meals and snacks for guests on board.

Heading forward to the starboard side on the main deck, you will come across the on-deck powder room, providing convenience for guests. Continuing into the on-deck Master Suite, you will find a settee to the starboard side, a king-size berth with a bedside table, and a built-in desk to the port side forward. The suite offers ample storage and closet space. The ensuite bathroom is spacious and features a his and hers layout, complete with a shower and tub. The master suite also includes a 50" TV for entertainment.

Descending from the starboard main foyer to the lower foyer, you will find access to four large guest staterooms. Two of these staterooms have queen-size beds, mirror images of each other, and ensuite bathrooms with a shower/tub combination. These staterooms offer plentiful storage and closet space. Additionally, there are mirror twin cabins with two twin berths in each, as well as ensuites featuring a shower/tub combination.

Moving up the winding stairs from the guest foyer, you will reach the bridge deck, where you'll discover the bridge deck salon. Continuing aft from the salon, you'll pass a well-appointed



powder room before entering the private VIP stateroom to the port side. The VIP stateroom features a queen-size berth and an ensuite bathroom. Further aft is the expansive skylounge, which features a large bar to the starboard side. On the port side, there is a large half-circle settee with a centerline settee, two chairs, an ottoman, and a cocktail table. To the starboard side, there is a small table with two chairs, which is an ideal spot for card games or chess. A large TV is located on the forward bulkhead, allowing for movie nights. Walking through a set of glass double doors leads to the second dining area on the spacious upper aft deck, which boasts a custom round teak table accommodating ten guests.

The pilothouse, located on the bridge deck, offers a spacious and comfortable space. It includes a leather settee with a mahogany inlaid table, providing guests with a place to enjoy the view without disturbing the captain. The pilothouse also features a large navigation work desk, a chart table, drawers, two Stidd captain's chairs, and plenty of storage. The bridge wings offer docking stations on both the port and starboard sides. Access to the working foredeck is possible via the Portuguese bridge by crossing a central catwalk in the deckhouse.

To reach the sundeck, follow the stairs up from the bridge deck aft, located to the starboard side. On this deck, you will find a large Jacuzzi in the middle, a beautiful large bar with four bar stools to the port side forward, and a forward-facing settee to starboard. There is also a dining area towards the aft. The sundeck is complete with several comfortable lounge chairs for ultimate relaxation.

## MACHINERY

### Main Engines

- Engine Type: (2) CAT 3512B @ 2250hp (1680 kW) each
- Starboard Engine Hours: 5,267 as of Nov 16, 2023
- Port Engine Hours: 2,657 as of Nov 16, 2023
- Total Engine Hours: 11,608 as of Nov 17, 2023
- Transmissions: ZF BW755



- Engine Controls: Prime Mover controls MPCD @ 4 Stations
- Shafts: 5" Aquamet 22HS stainless steel shafts with Tides

Marine seals – Reconditioned and balance

(July 2023)

- Propellers: Osborne 5 blade bronze 52"x 59" Reconditioned and Balanced in July 2023
- Injectors New (Sept 2022)
- Injector Power Leads New (July 2023)

### **Generators & Electricity**

- Type: (2) Northern Lights MP668H 99 KW (New 2018)
- Hours: Port 5,575; Stbd. 5,750 as of Nov 11, 2023

### **Other Machinery**

- Stabilizers: ABT Trac Zero Speed (Overhauled 2023)
- Steering: Jastram (Overhauled 2023)
- Bow Thruster: American Bow thruster 87hp hydraulic (Serviced in July 2023)
- Fuel Separator: Alpha Laval MIB 303 (Rebuilt on 2022)
- Watermakers: (1) 5,500 gal per day, (2) 1,900 gal per day (Both rebuilt on 2022)
- Black Water: 800 US Gallons (3,028 liters)
- Gray Waters: 500 US Gallons (1,892 liters)
- Air Conditioning: Marine Air Chiller (Completely replaced in 2018 & major serviced on 2022)
- Shorepower: Atlas 75kva 480VAC 50/60hz (Total serviced & replaced parts in July 2023)
- Sewage Treatment: Tidal Wave (Full serviced on 2022)
- Shaft Seals: Tides Marine Sure Seal (New 2023)
- Cathodic Protect: Cathelco (New rods 2023)

## **COMMUNICATION, NAVIGATION & ENTERTAINMENT SYSTEMS**



## **Communication Systems**

- (1) HP Office jet pro 8600 printer scanner
- Via Sat – Satellite communication voice and data
- Sailor RT4822 VHF DSC
- Furuno Time Zero Nav.
- Simrad HS90 VHF's with four hand helds
- ICOM M85 crew radios
- Starlink dual system (2023)
- Updated Kerio network control & Netgear NG310
- Wi-Fi access points throughout vessel 12 points (New 2022)

## **Navigation Systems**

- Updated Radar: Furuno 96-mile RCU014 radar
- Furuno NavNet 3D BB radar & electronic chart system
- Updated Gyro/autopilot: Simrad AP50 Gyro and Simrad
- Chart Plotter: Nav computer – Noble tech software
- GPS: Furuno GP150
- Updated Furuno GP33
- Updated depth sounder: Furuno DFF1 BB Sounder
- Instruments: Furuno FI Series wind, boat speed & depth displays RD33 (2023)
- Updated watchkeeping: Furuno BR510 BNWAS
- AIS: Furuno FA170 (2023)
- Furuno Satellite Compass SC702

## **Entertainment System**

- Seatel series 04 KuBand antenna (Europe & Caribbean)
- KVH Trac Vision HD7 antenna (USA HD TV)
- Plex movie system – 1300 movies
- "Control 4" iPad controls





- TV Receivers
- US Direct TV HD receivers (x10)

## **TVs**

- 42" Sony LED TV (Sundeck)
- 65" LG TV (Skylounge)
- 26" Samsung LED TV (Bridge deck aft)
- 42" Samsung LCD TV (Master stateroom)
- 26" Samsung LED TV (5 Guest staterooms)
- 42" Sony LED TV (Crew mess)
- 32" Sony LED TV (Capt. cabin)
- 22" LG LCD TV (3 Crew cabins)

## **GALLEY AND LAUNDRY EQUIPMENT**

### **Main Galley**

- (1) x Bosch 5 burner cooktop (New, Nov 2022)
- (1) x Bosch oven (New, Nov 2022)
- (1) x Subzero double door fridge - (Serviced Nov 2023)
- (1) x Subzero double drawer fridge - (Serviced Nov 2023)
- (1) x Subzero double drawer freezer - (Serviced Nov 2023)
- (1) x Microwave
- (1) x Kenmore dishwasher

### **Laundry**

- (2) x Miele PW6065 washer - Updated
- (2) x Miele PT7136 dryer

### **Crew Mess**

- (2) x Uline refrigerators - Updated



- (1) x LG microwave - Updated

### **Skylounge**

- (1) True refrigerator (Sept 2022)
- (1) True icemaker (Sept 2022)

### **Main Foyer**

- (1) New dual temperature full height wine fridge (Sept 2022)

### **Main Salon**

- (1) True refrigerator (Sept 2022)
- (1) True icemaker (Sept 2022)

### **Guest Foyer**

- (1) Subzero double drawer fridge

### **Bridge Aft Deck**

- (1) Nurxiovo icemaker - Updated

### **Sundeck**

- (1) Nurxiovo fridge - Updated
- (1) Scotsman icemaker - Updated

### **Lazarette**

- (2) Danvy standup freezers (Sept 2022)
- (1) Vevor ice machine (Sept 2022)

### **Master**

- Double subzero refrigerator



## DECK EQUIPMENT

- Anchor Windless: 2 x Maxwell 6000 Series hydraulic windless/capstans (Rebuilt in July 2023)
- Anchor: (2) 150 kg Stockless galvanized anchors
- (2) 5/8" 500ft ISO galvanized anchor chain – New port chain (July 2023) – Stbd. replaced years before
- Capstans: (2) Maxwell 3500 Series hydraulic (Rebuilt in July 2023)
- Boat Davits: (2) 1000kg hydraulic davits (serviced in Nov 2023)
- Passerelle: Besenzoni P1390 hydraulic Passerelle (Inoperative) Power pack needed

## SECURITY, FIRE FIGHTING & SAFETY EQUIPMENT

Out of water inspection in July 2023

### Security Equipment - CCTV System

- Cameras: 4
- Monitors: 3 – Crew quarters, PH and Galley

### Fire Fighting Equipment

- Fire Control System: Fire Shield
- Alarms: yes

### Safety Equipment:

- All up-to-date

## ACCOMODATIONS

### Master Stateroom

- Full beam master bedroom located on the main deck forward
- King bed, writing desk, and settee
- His and her ensuite bathrooms
- His and her closets with a safe
- Full AV system Including satellite TV & access to Plex Movie System. Streaming capable



## **VIP Stateroom**

- Large cabin located just aft of the bridge with panoramic views
- Queen-size bed
- Ensuite bathroom
- Writing desk
- Full AV system Including satellite TV & access to Movies

## **(4) Four Guest Stateroom**

- Spacious cabins located on the lower deck
- 2 Queen staterooms and 2 twin staterooms
- Ensuite bathroom
- Full AV system Including satellite TV & access to Movies

## **Crew**

- Accommodation for 8 crew in 4 cabins
- All crew cabins have TVs with access to Movies
- Captain's cabin fitted with satellite TV and ability to display radars on TV

## **Skylounge**

- Surround system
- PS-5 gaming console
- Plex Movie System

## **TENDER AND TOYS**

- 4 Jet skis – (New, Nov 2022)
- 15' Gemini inflatable with 115 Yamaha

## **UPGRADES**

### **2023**

- New Carpeting throughout the vessel / \$50,000 (Nov 2023)



- New Dining Room Chairs (Nov 2023)
- New Tables in Salon (Nov 2023)
- Salon and bridge deck electric sliding doors rebuilt (Nov 2023)
- Bright work re-varnished (Nov 2023)
- New transfer system (Nov 2023)
- Bottom paint (July 2023)
- Rebuilt port transmission (July 2023)
- Main Engine: Heat enhancers and after coolers cleaned (July 2023)
- Stabilizers dropped and serviced (July 2023)
- Both shafts straightened and resurfaced (July 2023)
- New cutless bearings (July 2023)
- Both props reconditioned (July 2023)
- Engine alignment (July 2023)
- New 8-step gangway (July 2023)
- Recaulked entire interior of vessel, heads, showers and sinks (March 2023)
- Starlink double with blender
- Electronics serviced and up-to-date

## **2022**

- 4 new Jet skis (Nov 2022)
- Replaced ceiling in control room and rebuilt shelving (Nov 2022)
- All 3 crew showers rebuilt (Nov 2022)
- Engineer's cabin, head and shower rebuilt (Oct 2022)
- Both water makers completely rebuilt (Oct 2022)
- New headliner - entire vessel / \$160,000 (July 2022)
- New TV and Audio system / \$130,000
- Ceramic coated Wax on entire vessel

## **2021**



- New cathodic protection system
- New main engine exhaust from motor to the back of boat
- New generator exhaust
- All tanks professionally cleaned
- All raw water replaced, repaired, or serviced including sea chests, crossover, and all feed lines from crossover
- All air fuel vales serviced
- Air system flushed and new air compressors installed with auto drains alarms and DC back up
- Rebuild lazarette
- Atlas invertor on order to be replaced
- New engine room intake fans and dampers
- Starboard main engine overhaul at 6341 hours. Prior to present ownership
- New cell system with high-powered antennas and Kerio system

## **2020**

- Port main engine rebuild at 8951 hours. Prior to present ownership
- New water maker membranes
- New chiller plant and control system
- New raw water pumps
- New generator power system
- Bottom job and prop speed completed
- New master carpet
- New engine fuel heat exchangers, water pumps and fuel coolers
- New sat dish (V11)
- Full up to date engine, transmission, and generator service
- New engine room fire system and panel
- All air handlers replace with exception of sky lounge
- All cranes service and updated
- Replaced most of ac chiller lines



- All fuel values rebuilt
- New bottom paint, with prop speed
- All raw water replaced, repaired, or serviced including sea chests, crossover, and all feed lines from crossover
- Passerelle power pack removed, it is inoperative

## **2019**

- New exhaust clean system
- New water maker system
- New customs beach club
- New motor mounts
- Shafts serviced, props balanced and cutlass bearings
- New customs beach club

## **2018**

- Rebuilt hardtop – closed in
- Starboard transmission – Major service
- Sundeck new take decking
- Rebuilt electrical panels
- Shafts serviced and props balanced and brought to s-class
- New water maker system
- Annual maintenance & surveys carried out at Rybovich, Florida
- (3) New 10-ton chillers
- (43) New air handlers - every single one aboard was replaced
- New circulation line for air conditioning
- (2) New 99kw Northern Lights generators
- Most of the yacht was rewired including all-new breaker panels
- New teak deck on sun deck
- Revamp of the hydraulic systems including new PTO's



- Engine room was repainted and had a wrap added to walls and ceiling panels
- New hydraulics added to large forward Bosuns hatch
- New shaft seals
- All exterior cushions re-covered
- New spa controls

## **2015**

- Annual maintenance & surveys carried out at Rybovich, Florida
- Haul-out, bottom paint, prop speed & zincs
- Stabilizers removed and new seals fitted (rams rebuilt in June)
- Thruster seals changed
- Rudders removed, bearings checked, seals replaced, and rams rebuilt
- All seawater inlet and overboard discharge valves replaced with new
- Fuel and water tanks opened and cleaned
- Sewage treatment system overhauled
- Electrical mega tests completed on generators and pumps
- 5-year hi fog factory service completed

## **Refit 2014**

An extensive refit was carried out in Ft. Lauderdale during the Summer of 2014 which included:

### **Exterior**

- Complete repaint from mast to waterline
- Reconfiguration of sundeck to include a new bar area, larger table, and elimination of helm station
- Replacement of all old Corian countertops with new granite tops
- Upgrade of all exterior lighting to LED





## **Interior**

- Complete re-decoration of the interior including all-new fabrics, upholstery, wall coverings, and furnishings
- Throughout the entire interior
- All new bedding and towels
- New ceilings and carpets in all areas
- Replacement of all stone countertops with new marble in all guest areas
- Modification of main salon bar area
- Installation of hardwood floor in the sky lounge
- Upgrade of all interior lighting to latest generation LEDs
- Extensive carpentry modifications and installations

## **Entertainment**

- Complete overhaul of the AV system including new TVs and install of Crestron/iPad control system
- Upgrade of satellite TV systems
- Installation of 100" open-air movie projector system on the sundeck

## **Electronics**

- Extensive rewiring and rearrangement of bridge equipment & Nema network
- Installation of new radar and depth sounder
- Installation of new Wi-Fi network through the yacht and new network control system
- Replacement of all radio and cell antennas

## **Engineering**

- Top-end overhaul of main engines
- Full overhaul of transmissions
- Service work on generators
- Engine realignment



- Overhaul of watermakers
- New engine room and lazarette floor plates
- Extensive engine room painting and detailing

## **EXCLUSIONS**

All of the Owner's personal items and 39' Yellowfin Tow Tender with Tow Harness.



MISS STEPHANIE 138' (42m) Richmond Motoryacht, 2004/2023



Main Deck Salon





Main Deck Salon



Main Deck Salon





Main Deck Salon



Main Deck Salon





Main Deck Salon



Aft Deck





Aft Deck



Master Stateroom



Master Stateroom



Master Stateroom





Master Ensuite



Master Ensuite



Stairs to Lower Deck



Guest Stateroom Port side





Ensuite



Guest Stateroom Stbd. Side



Ensuite

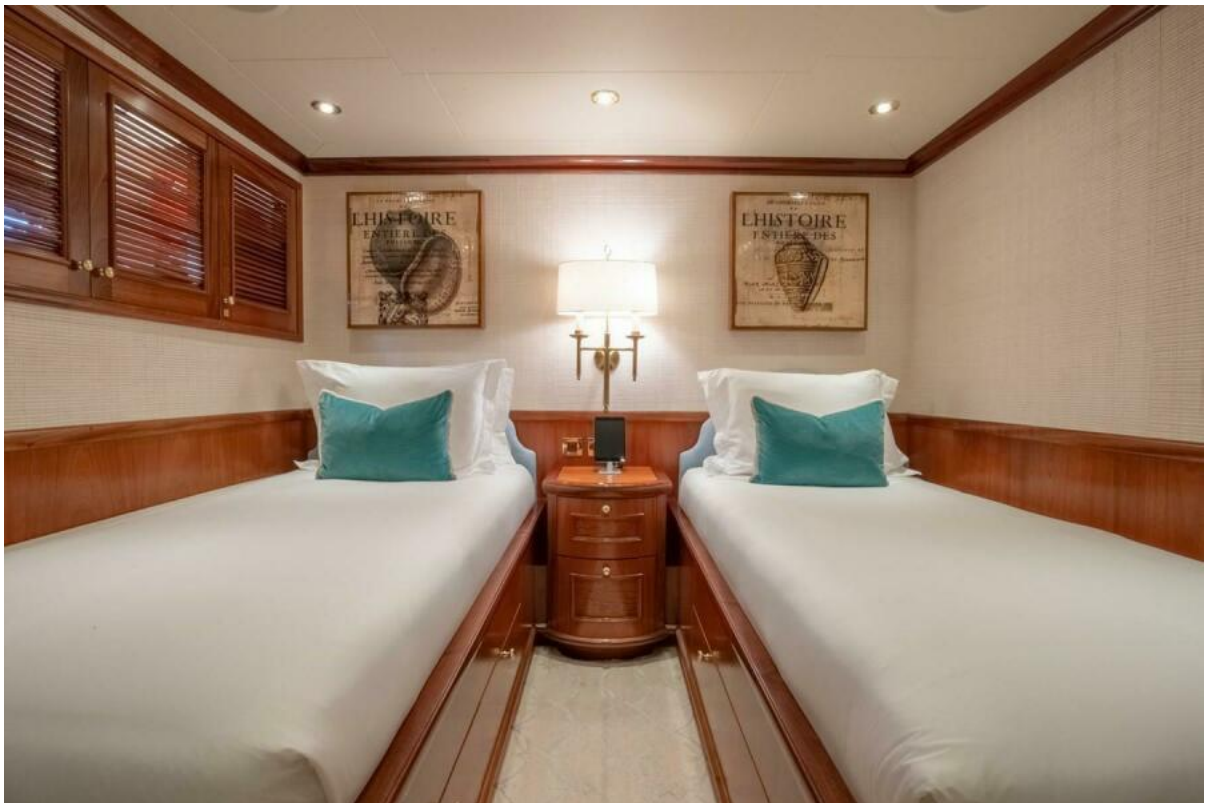


Twin Stateroom Stbd. Fwd.





Ensuite



Twin Stateroom Port Fwd.



Ensuite



Bridge After Deck





Bridge Aft Deck



Bridge Aft Deck





Bridge Aft Deck and Fly Bridge Stairs



Sky Lounge Bar





Sky Lounge



Sky Lounge



VIP Stateroom on Bridge Deck



VIP Ensuite





Wheelhouse



Wheelhouse



Wheelhouse



Sun Deck





Sun Deck



Jacuzzi - Sun Deck

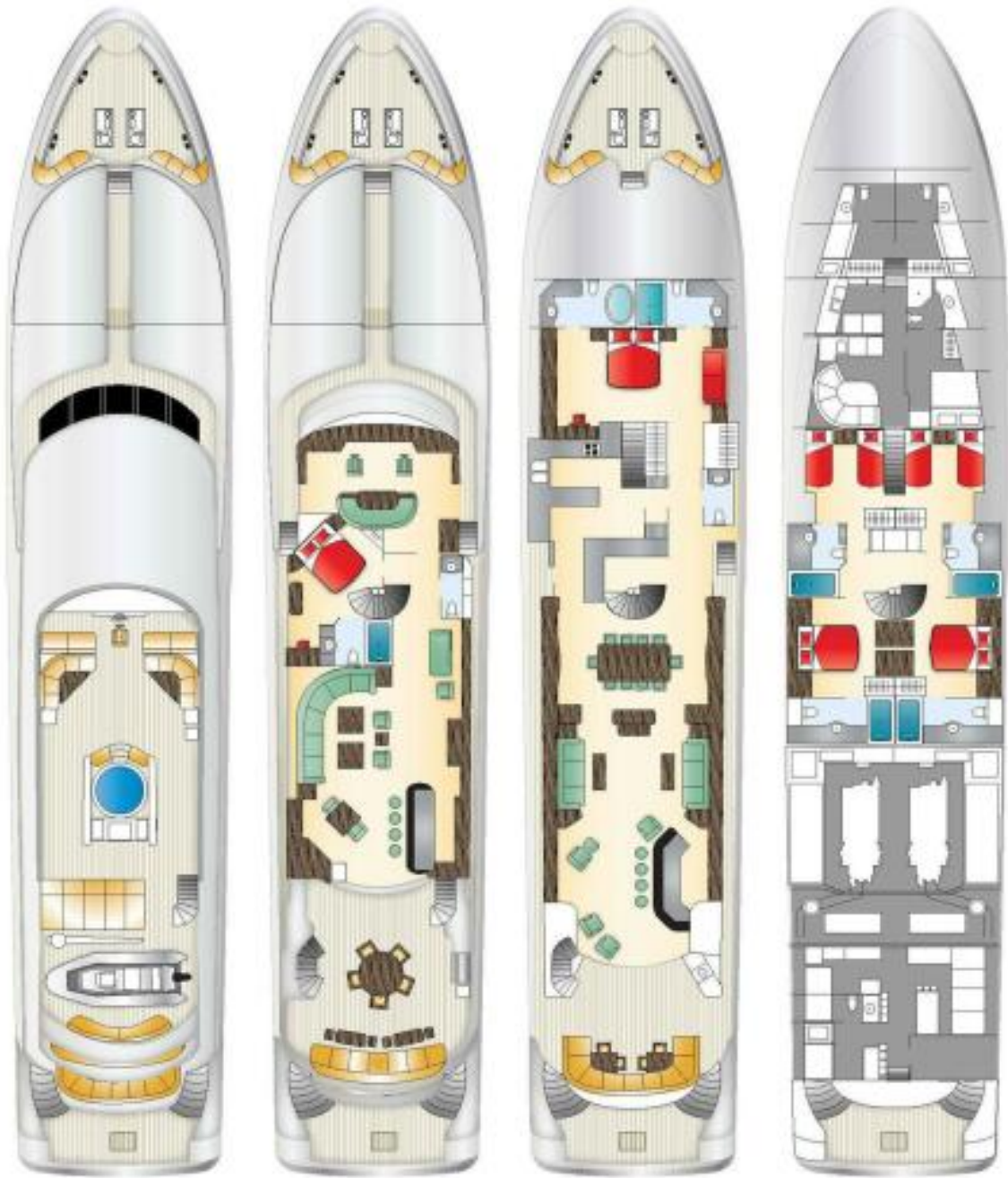


Jacuzzi - Sun Deck



Sun Deck





MISS STEPHANIE, 138' (42.06m) Richmond Yachts, 2004/2023

## MISS STEPHANIE LAYOUT