



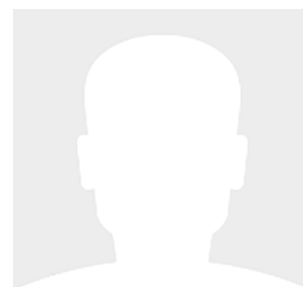
78' (23.77m) 2001 West Bay
Nanaimo British Columbia Canada



OVERVIEW

Manufacturer:	West Bay	Hull Material:	Fiberglass
Engines:	2 Detroit/MTU	Cruise Speed:	18 Knots
Engine Model:	2000	Max Speed:	25 Knots
Engine HP:	1350	Cabins/Heads:	4 / 4
Beam:	20' 0"	Fuel Type:	Diesel
Max Draft:	"	Fuel:	2750 G (10409.88 L)
Water:	650 G (2460.52 L)		

Call for Price





Data Sheet

Category: Motor Yachts
Condition: Used
Model Year: 2001
Beam: 20' (6.10m)
LOA: 81' (24.69m)
Cabins: 4
Sleeps: 8
Single Berths: 4
Queen Berths: 1
King Berths: 1
Full Beam Master: Yes
Heads: 4

Crew Cabins: 1
Crew Sleeps: 2
Crew Mess: 1
Maximum Speed: 25 Knots
Cruise Speed: 18 Knots
Fuel Type: Diesel
Hull Material: Fiberglass
Air Conditioning: Yes

Dry Weight: 118000 lbs
Stabilizers: Standard
Fuel Tank: 2750 gal (10409.88 liters)
Fresh Water: 650 gal (2460.52 liters)
Holding Tank: 100 gal (378.54 liters)
Imported: No
Builder: West Bay
HIN/IMO: BZH00709G001

Engines/Generators

Engine 1

Detroit/MTU
2000
1350HP
1006.70KW
Hours: 4900
Year: 2001
Location: Port

Engine 2

Detroit/MTU
2000
1350HP
1006.70KW
Hours: 4900
Year: 2001
Location: Starboard



Summary/Description

From luxury boatbuilder West Bay Shipyards, this boat is ready to go cruising. From its fully serviced machinery, high-capacity watermaker, hydraulic bow and stern thrusters, stabilizers, and hot tub on the flybridge, you can bring your provisions and head out on your adventure anywhere.

Purchased in 2022, this West Bay Sonship had a MTU certified technician go through all the mechanical systems to prepare the boat for a 2023 cruise to Alaska. Everything from the hydraulic lines and injector pumps to generators were serviced or replaced. Navigation electronics were upgraded, new batteries were installed, and the audio/visual system was re-wired to all cabins, integrating StarLink with smart TVs for a reliable entertainment system. With a successful Alaska trip under its belt, the owner was readying the vessel to circumnavigate Vancouver Island this summer but life circumstances have led to the sale.

Run for the last two years by a captain/engineer, who ensured all systems have been maintained as required. This is a vessel where the current owner has completed all upgrades and maintenance so you have a well-founded vessel to start with.

Disclaimer

The company offers the details of this vessel in good faith but cannot guarantee or warrant the accuracy of this information nor warrant the condition of the vessel. A buyer should instruct his agents, or his surveyors, to investigate such details as the buyer desires validated. This vessel is offered subject to prior sale, price change or withdrawal without notice.

