



SYNERGY

38' (11.58m) 2009 Sabre 386
Essex Connecticut United States



OVERVIEW

\$245,000

Manufacturer:	Sabre	Hull Material:	Fiberglass
Engines:	1 Yanmar	Cruise Speed:	
Engine Model:	4JH3E	Max Speed:	
Engine HP:	40	Cabins/Heads:	2 / 1
Beam:	12' 8"	Fuel Type:	Diesel
Max Draft:	4' 11"	Fuel:	40 G (151.42 L)
Water:	100 G (378.54 L)		



Mark Edwards medwards@capeyachts.com

774-526-0914

Data Sheet

Category: Cruiser-Racer
Condition: Used
Model Year: 2009
Beam: 12'8" (3.86m)
Max Draft: 4' 11" (1.50m)
LOA: 38' 7" (11.76m)
LWL: 32' 6" (9.91m)
Cabins: 2
Sleeps: 7
Single Berths: 1
Double Berths: 1
Queen Berths: 2
Heads: 1

Fuel Type: Diesel
Hull Material: Fiberglass
Hull Shape: Monohull
Hull Finish: Awl Grip
Bridge Clearance: 56' 4"

Displacement: 17300 lbs
Fuel Tank: 40 gal (151.42 liters)
Fresh Water: 100 gal (378.54 liters)
Holding Tank: 26 gal (98.42 liters)
HIN/IMO: HWS38288A909
In Stock: Yes

Engines/Generators

Engine 1

Yanmar
4JH3E
Inboard
40HP
29.83KW
Fuel: Diesel

Summary/Description

SYNERGY is a one owner 2009 Sabre 386 sailboat currently available for sale in Essex, Connecticut. This owner has taken great care of this beauty and it shows. The 386 Sabre won the award for "Boat of the Year" by Cruising World Magazine in 2005.

SYNERGY is a 2009 Sabre 386 sailboat currently available for sale in Essex, Connecticut. Sabre Yachts worked together with renowned designer Jim Taylor to launch the Sabre 386 in 2004, earning awards for "Boat of the Year" by Cruising World Magazine in 2005. She embodies all one could hope for in a performance cruising yacht - exceptional handling and boat speed; functional and comfortable design details above and below deck; and a level of quality Maine craftsmanship and attention to detail unmatched by other production builders.

This sailboat is currently owned by the original owner who ordered the boat built in 2009 with numerous beyond standard options, including bow thruster, two zone AC/Heater within the cabin layout with separate zone controls, dinghy davits, Dodger and Bimini, and Asymmetric Spinnaker sail with Main sail and roller reefing Genoa sail. This is a rare offering and the only one available in the Northeast at this time. Call today for more information and to make an appointment to view her in person.

Manufacturer Description

Sabre's attention to detail is well known. Whether it be the style and grace of her shear, the intricate details of a deck tooling blending comfort, safety and good looks, or the details found in the hand crafted interior joinery, Sabre Yachts stands alone in quality and reputation. The Sabre 386 embraces the standards which have put Sabre's name atop the quality spectrum of boatbuilding for the last 35 years. Current Sabre owners and those who have followed the brand over time, will see details here which make it feel familiar. Details which make sense, which add to comfort, security and well being. Logical details that, above all, make each Sabre design a great, safe and beautiful sailboat. But details from the past are just part of the story. Keeping up with technology has to go hand in hand with our desire to build the finest possible sailing yachts for our clients. The Sabre 386 hull is built using vacuum bagged, closed cell, cross linked PVC Divinycell foam and structural E Glass, which gives her one of the strongest, lightest, most durable structures available today. Her deck is also cored with Divinycell. Hull lines, underwater appendages and rigs were drawn by Jim Taylor Yacht Design. The deck, deck styling and interior were accomplished by the Sabre Design Team. The result is a yacht which, like her siblings, will establish a benchmark in sailing that will endure for many years to come.

Accommodations

Synergy has a beautiful and traditional New England interior of rich satin varnished American Cherry. The sole is varnished teak and holly. The interior wood and cushions are in great shape and there were no odors below. Total sleeping capacity is comfortable for seven (7).

There is a large **Forward Stateroom** with centerline island queen bed with access from the sides. This berth is just 25" off the cabin sole. This cabin features a thick custom mattress, a sink vanity with mirror, two opening portlights an overhead hatch, and hanging locker.

The large **Main Salon** is a great space for the family for dinner and card games after. There is a bulkhead-mounted two-leaf table with inlay that can be open for the full width of the cabin or closed and up on the bulkhead for more cabin room. A full length L-shaped settee to port pulls out to convert to a double bed and the stbd settee makes a nice single. Louvered door lockers are outboard to port and stbd. Hatches, fixed windows, and opening portlights add air and light to make this a bright and airy space.

The **Nav Station** faces aft and is at the aft end of the stbd settee, The settee backrest cushion swings out to double as a backrest for the navigator.

The **Galley** is across from the Nav Station and conveniently adjacent to the companionway and the main salon. There is a lot of Corian counter space for meal prep, a double-basin stainless steel sink with covers, waste basket under counter, top load and front load refrigerator, a Force 10 stainless steel 3 burner stove with oven and broiler, and microwave oven. There are ample drawers and lockers for storage and a fold-up additional counter.

The **Aft Stateroom** is to port and private. There is a large thick mattress for sleeping athwartships and lockers and light. This is a good size cabin and your guests will be comfortable. The hanging locker is cedar lined.

The **Head and Stall Shower** are to starboard and feature a Corian counter with stainless steel sink vanity, Quiet Flush electric toilet, Tankwatch level indicator, teak seat over the toilet, soap dispenser, window and stainless port, and overhead hatch.

Galley

- Force 10 stainless steel three burner propane stove with oven and broiler
- Stove gimbals and has pot holders - includes stainless stove guard and belt hooks
- Dometic microwave
- Sea Frost refrigerator 12vDC
- Refrigerator has double top load doors and a front load door
- Waste basket located in under counter bin
- Double basin stainless steel sink with Corian covers
- Fresh water and ice box drain hand pumps at galley sink
- Corian counter with large meal prep space
- Ample lockers and drawers for storage

Electronics

- Raymarine E80 chartplotter
- Raymarine linear drive Autopilot integrated to MFD with display control at engine panel
- Wireless Remote control for Autopilot
- Raymarine 2kw Raydome for radar - mast mounted
- Raymarine ST 60 Wind, Speed, and Depth instruments over the companionway
- Raymarine ST 60 Graphic mounted over the companionway
- Raymarine ST 60 Graphic mounted at Nav Station
- Raystar 125 GPS
- Icom IC-422 VHF radio at Nav Station
- Command Mic VHF for Helm
- Navionics Chart Chip (Long Island Sound, CT, and MA Coastline)
- Sharp Flatscreen TV for DVD use in Main Salon
- Clarion stereo with speakers below and in the cockpit
- CD player

- Ritchie Binnacle compass

Mechanical - Electrical - Plumbing

MECHANICAL:

- Yanmar 3JH4E - (serial # E07738)
- Single
- Racor primary diesel filter and water separator
- Secondary diesel filter on engine
- Groco sea strainer
- PSS friction shaft seal
- **Side Power Bow Thruster (control at helm)**
- Engine access all around

ELECTRICAL:

- 12vDC and 120vAC systems
- 2 Electric cords - 30 amps
- Batteries include 3 House Group 31 AGM - 1 Group 27 AGM Engine Start - 1 Group 31 AGM Bow Thruster
- Electrical breaker panel at Nav Station
- Battery selector switches on port settee face
- **Electric main halyard winch in cockpit**
- **Lewmar Electric anchor windlass**
- **Air conditioning reverse cycle heating system - two zones**
- **Sea Frost 12vDC refrigerator and freezer cold plate system**
- **Electric Quiet Flush toilet**
- Dometic Microwave
- Prosine 20 Inverter / charger
- Xantrex battery combiner
- Xantrex battery monitor
- Interior lights are LED
- Running lights and mast lighs
- 120vAC outlets through the interior
- Fans 12vDC

PLUMBING:

- Hot and cold pressure water
- Water heater heats from 120vAC and engine
- Cockpit shower - hot and cold
- Raritan Electric toilet with holding tank and macerator pump for overboard discharge when offshore
- City Water hookup
- Head Tankwatch indicator for holding tank
- Rule 2000 electric bilge pump
- Marelon through hulls and seacocks

Hull - Deck - Rigging - Sails

HULL:

- Flag Blue hull painted (2018)
- Double white boot stripes
- Gold cove stripe
- Teak Rub rail below the sheer with stainless steel half-round cap
- Red Ablative anti-fouling paint
- Single balanced spade rudder
- Shallow draft bulb/wing keel
- Bow thruster
- Swim platform with steps for easy boarding over transom
- Jim Taylor design noted for excellent performance and sea keeping
- Won "Boat of the Year" in her category by Cruising World Magazine in 2005

DECK:

- Tee shaped cockpit with single wheel on center - easy to move around
- Big cockpit for entertaining friends and family
- Wide side decks for movement forward
- Dedicated anchor locker
- Kato stainless steel dinghy davits
- Edson outboard bracket mounted on stern rail
- Stern perch seats installed on stern rail with cup holders
- Cockpit cushions
- Dodger - Bimini - and connector - refurbished 2020
- Mainsail cover and Helm / Wheel cover
- Varnished teak toe rail
- Bow and stern rails and double lifelines with PVC covers
- Lifeline gates to port and stbd
- Two Lewmar # 50 Primary winches for genoa sheets
- One Lewmar # 40 on cabin house to port
- One Lewmar # 40 Electric on cabin house to stbd
- Genoa tracks inside on walkways and outside on teak toe rails
- Control lines for lead adjustments lead back to cockpit
- Swim ladder on swim platform
- Opening hatch in cockpit over the aft cabin berth
- Four Opening Lewmar hatches with integral screen / shade
- Seven Opening stainless steel portlights
- Four fixed windoes
- Two stainless steel cowl vents
- Harken 4:1 Traveler
- Lewmar electric windlass with capstan - foot switches on foredeck
- Double stainless steel anchor roller
- Stainless steel grab rails on deck
- Varnished teak cockpit table

RIG:

- Hall Spars Mast and Boom (stored down for the winter)
- Mast is stepped on the keel. Masthead rig design.
- Double spreader

- Radar scanner mast mounted
- Furler 300S genoa roller furling
- Mainsail uses Dutchman restraining system
- Rigid boom vang

SAILS:

- Main sail - UK Halsey cruising main 8.4 oz Dimension 360 with hull # and Sabre logo - with Dutchman flaking system
- Genoa - UK Halsey cruising genoa 8.4 oz Dimension 360 - roller furler
- ATN spinnaker - multi-colored with launching and retrieval sock
- IJPE : 763.00 sq ft
- I : 51.83 ft
- J : 15.00 ft
- P : 45.33 ft
- E : 16.50 ft
- Working Sail Area : 763.00 sq ft
- PHRF Narragansett Bay in 2022 is 132 non-spinnaker and 120 with spinnaker

Additional Information

- Fenders and dock lines
- Life jackets
- Flares and general safety gear
- Delta anchor with stainless steel anchor swivel
- Rope and chain anchor rode
- Bell at Nav Station

Broker comments and Disclaimer

This original owner is very proud of his boat and by all appearances has taken excellent care to keep her maintained in excellent condition. He will be involved in the spring commissioning and make-ready process and hopes to be able to provide a new owner with an orientation to help shorten the learning curve.

Some boat gear is stored off the boat for the winter. The boat is hauled out at this time and under a shrink wrap cover but is very easy to view. Buyer should be aware that owner's personal gear is still on board and will not be included in the sale. If there is a question about inventory, Buyer should ask the broker about specific items. Call today for more details on the status and condition and make an appointment to tour Synergy in person soon.

The Company offers the details of this vessel in good faith but cannot guarantee or warrant the accuracy of this information nor warrant the condition of the vessel. A buyer should instruct his agents, or his surveyors, to investigate such details as the buyer desires validated. This vessel is offered subject to prior sale, price change, or withdrawal without notice.



Synergy at the dock



Synergy sailing



Synergy on the mooring



Synergy sailing



Synergy spinnaker collage



Synergy Keel



Synergy bow thruster



Synergy hull stbd



Synergy hull port



Synergy Transom



Synergy Deck from fwd



Synergy Deck fwd



Synergy chartplotter



Synergy electronics displays



Synergy Galley



Synergy Head vanity



Synergy galley stove



Synergy galley sink



Synergy galley waste



Synergy Galley locker



Synergy Main salon



Synergy salon port



Synergy salon stbd



Synergy Port settee and table



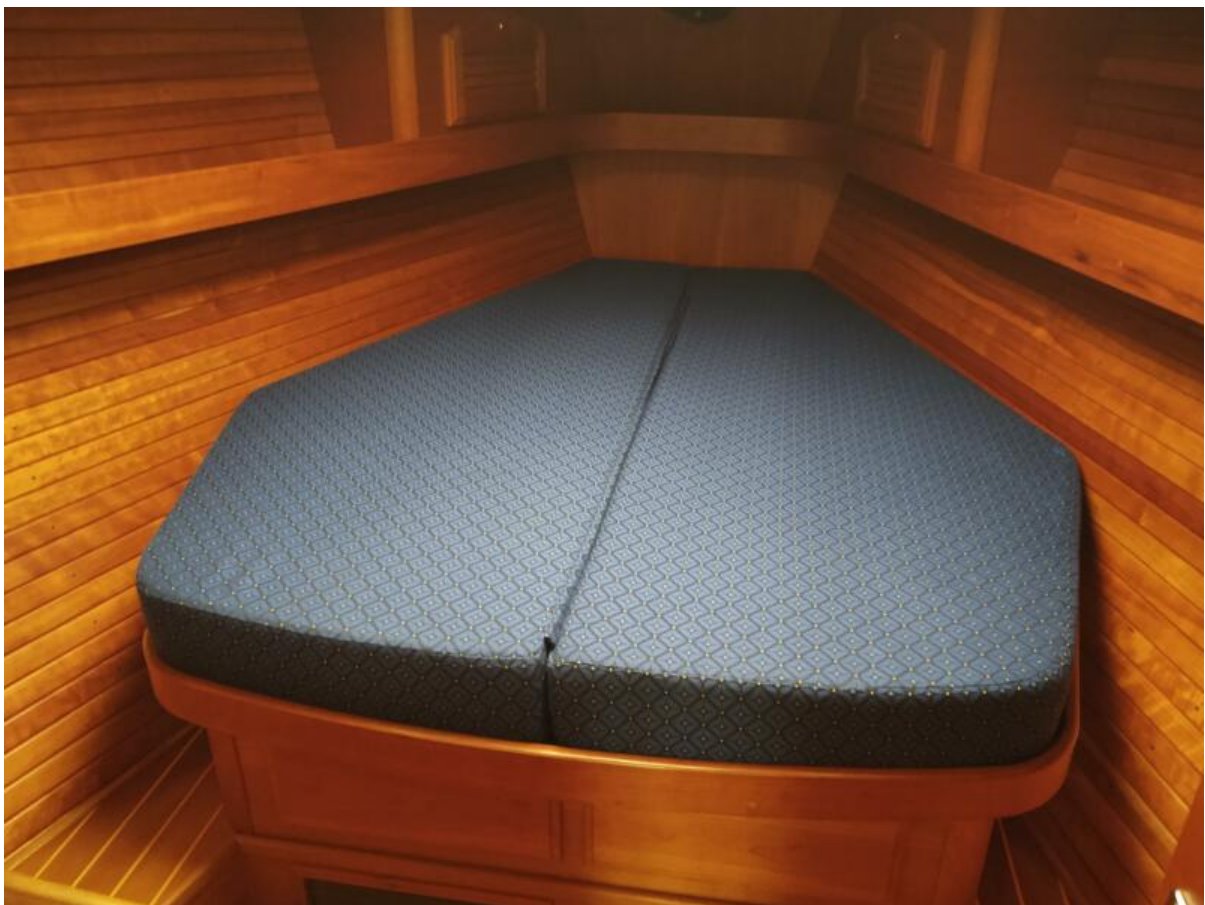
Synergy table both leaves out



Synergy Stbd settee



Synergy Port settee



Synergy Fwd Island Queen berth



Synergy Fwd Cabin



Synergy Fwd cabin vanity



Synergy Aft cabin berth



Synergy nav table



Synergy Nav Station



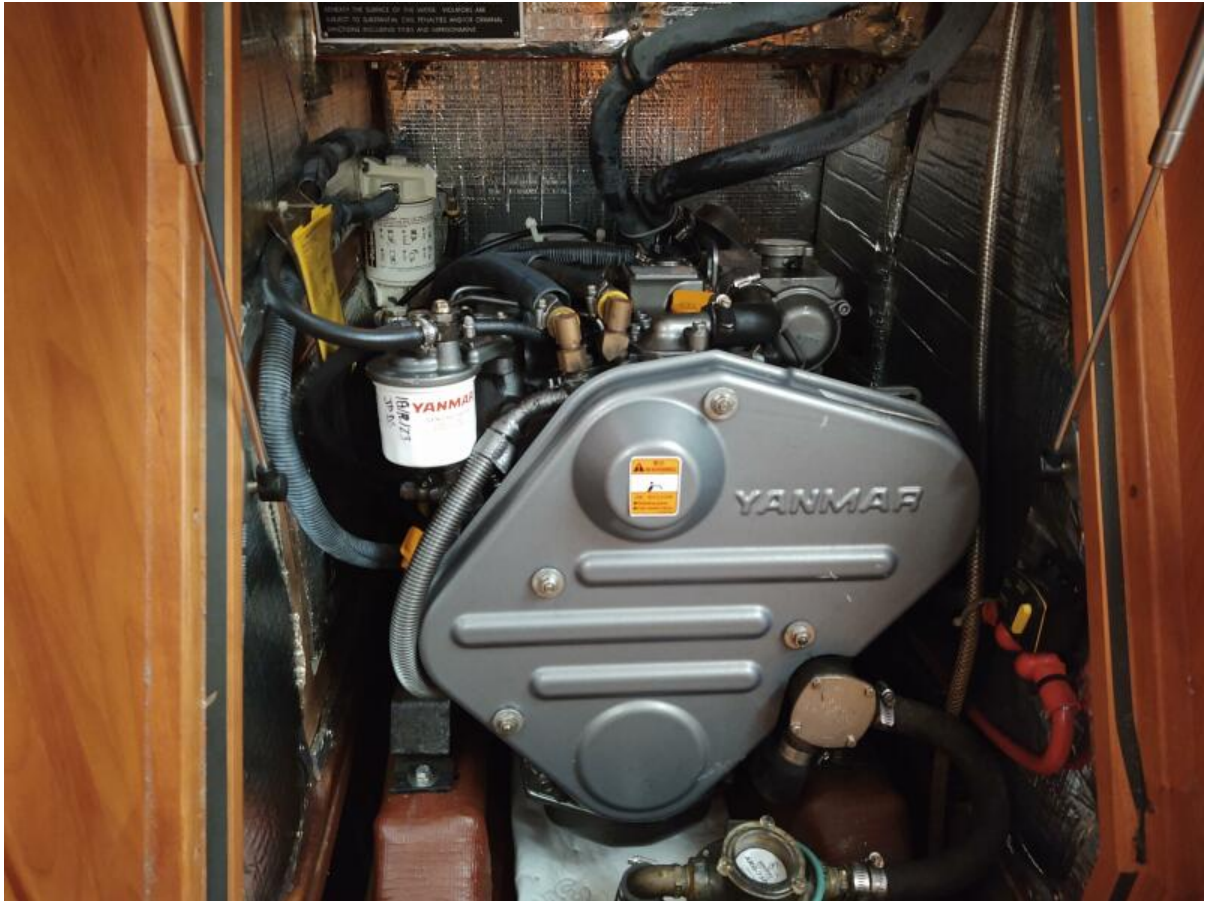
Synergy Nav Station



Synergy Nav Station



Synergy TV



Synergy Engine



Synergy cockpit table



Synergy battery switches



Synergy bell

774-526-0914