



Can't Take it with You

35' (10.67m) 2007 Rinker 350

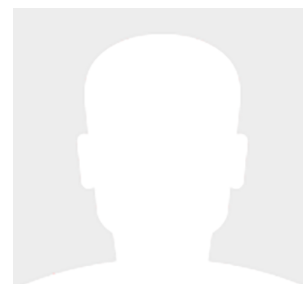
Newburyport Massachusetts United States



OVERVIEW

Manufacturer:	<i>Rinker</i>		
Engines:	2 Volvo-Penta	Hull Material:	Fiberglass
Engine Model:		Cruise Speed:	28 Knots
Engine HP:	320	Max Speed:	33 Knots
Beam:	12' 0"	Cabins/Heads:	1 / 1
Max Draft:	3' 0"	Fuel Type:	Gas/Petrol
Water:	50 G (189.27 L)	Fuel:	225 G (851.72 L)

\$88,000





Data Sheet

Category: Express Cruiser
Condition: Used
Model Year: 2007
Beam: 12' (3.66m)
Max Draft: 3' (0.91m)
Min Draft: 2' (0.61m)
LOA: 39' 2" (11.94m)
Cabins: 1
Sleeps: 4
Heads: 1

Maximum Speed: 33 Knots
Cruise Speed: 28 Knots
Fuel Type: Gas/Petrol
Hull Material: Fiberglass
Hull Shape: Modified Vee
Air Conditioning: Yes
Bridge Clearance: 9' 8"

Dry Weight: 15550 lbs
Fuel Tank: 225 gal (851.72 liters)
Fresh Water: 50 gal (189.27 liters)
Holding Tank: 50 gal (189.27 liters)
Exterior Color: Blue
HIN/IMO: RNK8922OC707
In Stock: Yes

Engines/Generators

Engine 1

Volvo-Penta
Inboard/Outboard
320HP
238.62KW
Fuel: Gas/Petrol
Hours: 300
Year: 2007

Engine 2

Volvo-Penta
Inboard/Outboard
320HP
238.62KW
Fuel: Gas/Petrol
Hours: 300
Year: 2007

Generator 1

Kohler
5KW

Summary/Description

A great boat for cruising the coastal waters, inland waterways or relaxing at your favorite mooring or marina. Sleeping accommodations for six, with two spacious staterooms and an expandable dinette for a third berth, make this your home away from home.

A great boat for cruising the coastal waters, inland waterways or relaxing at your favorite mooring or marina. Sleeping accommodations for six, with two spacious staterooms and an expandable dinette for a third berth, make this your home away from home. A spacious galley and dining area with all the creature comforts, including a large head with shower provides for an enjoyable and comfortable stay on the water. Low hour Twin Volvo-Penta 320HP EACH engines get you to your destination quickly without breaking the bank, fuel wise. A Kohler 5KW generator provides all the power you would need afloat as if you were still dockside. The molded in fiberglass swim platform, transom door and swim ladder make for easy entry from dock or water. Built in storage throughout this cruiser allows for fun items as well as docking necessities.. A 15,000 BTU MarineAir HVAC sytem supplies generous heating and cooling when conditions warrant. This is a great family boat that is looking for a new family to enjoy.

1 Owner

Dingy Included in Sale

Has Mooring Cover , Needs new enclosure

Vessel Walkthrough

As you enter the large molded in non skid swim platform through the transom door you will find a expansive cockpit area with spacious cockpit seating for lounging and dining. A cockpit sink with refrigerator, ice maker A large two person helm seat with storage sits behind the helm station and to the port is a large L shaped guest seat. An ergonomically designed wood grained helm station allows for great visibilty while providing a nice view of electronics and gauges. A helm station rocker switch opens the aft cockpit floor to a fully accessible engine room, where you will find it easy to service engines and generator. There is a Raymarine combination radar, GPS plotter and depth sounder to the port of the helm, with easy to read gauges to the starboard. VHF radio and FM stereo radio with great speakers throughout the cockpit. The sliding salon door opens to the inviting salon where you will find a full size galley with Corian counter tops, two burner electric stove, stainless steel sink and microwave oven. Beautiful cabinetry throughout the galley to store all your pantry items with an under counter refrigerator. An inviting leatherette full size sofa is opposite the galley and dining area. Four opening port holes allow for natural lighting and fresh sea air, while overhead recessed lights provide all the lighting needed throughout the boat. Teak and holly sole floors make for easy maintenance. Forward you will find the master stateroom with queen size berth, overhead hatch, portholes, closets, under berth cabinets and ambient mood lighting. A nice sized head with private shower, Vaccu flush toilet, Corian counter top, cabinets and porthole provide all the comforts of home. Aft of the salon you will find a combination lounging area that also serves as a guest stateroom with TV, cabinetry, overhead lighting, TV and storage closet.

Salon

- U-Shaped Leatherette Sofa
- Dinette Area and Dinette Table
- Teak and Holly Floors
- Overhead Lighting
- Portholes



Galley

- Corian Counter Tops
- Stainless Steel Sink
- Two Burner Electric Stove
- Hot and Cold Water
- Microwave
- Portholes
- Cabinets
- Refrigerator
- Overhead Lighting
- Overhead Hatch
- Shelving

Master Head

- Vacu Flush Head
- Private Shower
- Corian Counter Top Vanity
- Porthole
- Overhead Lighting
- Mirror

Guest Stateroom

- Lounge Style Sofa Converts to a Berth
- TV
- Overhead Lighting
- Closet
- Teak and Holly Floor

Deck

- Large Molded in Swim Platform with Boarding Ladder
- Transom Door
- Aft Cabinet Storage
- Dockside Water Hookup
- Platform Shower
- Grab Rails Throughout Deck Area
- Cup Holders
- Factory Radar Arch with Radar Running Light and GPS Antenna
- Windlass
- Danforth Anchor
- Bow Rail
- VHF Antenna

Helm and Electronics

- Raymarine Radar, GPS Plotter, Sounder
- Trim Tab Control
- **Bow Thruster Control**
- Fire Boy Control



- Mercury Shifters
- Wood Grained Panel
- Wood Steering Wheel
- Compass
- Rocker Breaker Switches
- Engine Gauges
- Stereo Speakers
- Two Person Helm Seat with Under Seat Storage
- Cup Holders
- Walk Through Windshield
- Large Passenger L-Shaped Companion Seat
- VHF Radio
- Horns

Electrical

- AC 120 volt and 12 volt DC Breaker Panel
- 5 Batteries
- Battery Switch
- Remote Bow Search Light
- Battery Charger

Engine and Mechanical

- Twin Volvo=Penta 320 hp,Low 310 Hours
- Volvo Drives
- **5 KW Kohler Generator**
- Marineair HVAC Heat and Air Conditioning
- **Bow Thruster**
- Electric Windlass
- Fire Boy Fire Suppression System
- Vacuum System

Additional Information

- 50 gal Fresh Water Tank
- 6 gal Hot Water Tank
- 235 gal Fuel Tank
- 45 gal Holding Tank
- 12' Beam
- 3' Draft
- LOA: 39"2

Disclaimer

The company offers the details of this vessel in good faith but cannot guarantee or warrant the accuracy of this information nor warrant the condition of the vessel. A buyer should instruct his agents, or his surveyors, to investigate such details as the buyer desires validated. This vessel is offered subject to prior sale, price change or withdrawal

without notice.



































