



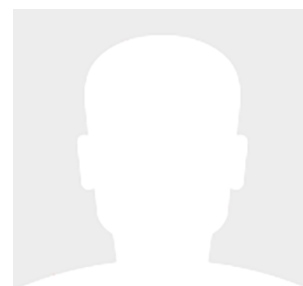
21' (6.40m) 2014 Supra SC350  
Salem New Hampshire United States



## OVERVIEW

**\$74,900**

Manufacturer:	Supra	Hull Material:	Fiberglass
Engines:	1 Indmar	Cruise Speed:	Knots
Engine Model:		Max Speed:	Knots
Engine HP:	345	Cabins/Heads:	/
Beam:	8' 6"	Fuel Type:	Gas/Petrol
Max Draft:	"	Fuel:	45 G (170.34 L)
Water:			





## Data Sheet

Category: Ski-Wakeboard Boats  
Subcategory: Bowrider  
Condition: Used  
Model Year: 2014  
Beam: 8'6" (2.59m)  
LOA: 23' 8" (7.21m)

Knots  
Knots  
Fuel Type: Gas/Petrol  
Hull Material: Fiberglass

Dry Weight: 4300 lbs  
Fuel Tank: 45 gal (170.34 liters)  
Imported: No  
Exterior Color: White/Black  
Trailer: Yes  
HIN/IMO: 123456789  
In Stock: Yes

## Engines/Generators

### Engine 1

Indmar  
Inboard  
345HP  
257.27KW  
Fuel: Gas/Petrol  
Hours: 245  
Year: 2014

## Summary/Description

Indmar 5.7 345 hp Inboard , Lake use only

This boat was made to wakesurf. With 900 pounds of subfloor factory-installed ballast, Supra Boats Supra SC also has a massive surf wave that is both long and powerful. The SC combines many of the same features of the wide-bow Supra SA with a more traditional bow and a tough, muscle-car-influenced look. Inside, the SC has a stylish, durable and ultimately functional lounge. The boat's deep seating lets you sit way down for a spray-free ride in big water, and every surface is covered with durable, mold-resistant vinyl that's double and triple stitched in high-stress areas. Supra added different colors and textures all over the boat and even allows for accenting on the Roswell Pro Edge tower for 2014. The SC's helm is handsome and intuitive, and I love that Supra built in redundancies with analog gauges and switches alongside the Vision Touch display, so you have the option of using either. In some cases, like the new Quick Bump Speed Stick, it's actually more convenient and safe to use the analog switch because you can bump your speed up or down one-tenth of a mile per hour without ever taking your eyes off the water. Snap-in carpet is standard on the floor, It's a snap-in mat that won't heat up or get water logged, and it makes clean up even easier.

## Disclaimer

The company offers the details of this vessel in good faith but cannot guarantee or warrant the accuracy of this information nor warrant the condition of the vessel. A buyer should instruct his agents, or his surveyors, to investigate such details as the buyer desires validated. This vessel is offered subject to prior sale, price change or withdrawal without notice.





































