



OWL NEST

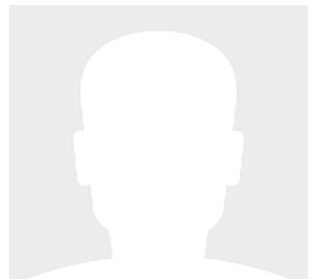
31' (9.45m) 2002 Eastern Casco Bay
Portsmouth Rhode Island United States



OVERVIEW

Manufacturer:	Eastern	Hull Material:	Fiberglass
Engines:		Cruise Speed:	16 Knots
Engine Model:		Max Speed:	20 Knots
Engine HP:		Cabins/Heads:	/
Beam:	11' 2"	Fuel Type:	Diesel
Max Draft:	3' 6"	Fuel:	180 G (681.37 L)
Water:			

Call for Price



George Friedlander gemml3@aol.com

Data Sheet

Category: Downeast
Condition: Used
Model Year: 2002
Beam: 11'2" (3.40m)
Max Draft: 3' 6" (1.07m)
LOA: 31' (9.45m)

Maximum Speed: 20 Knots
Cruise Speed: 16 Knots
Fuel Type: Diesel
Hull Material: Fiberglass
Hull Shape: Semi Displacement
Hull Finish: White gelcoat
Hull Warranty: None

Displacement: 12000 Fuel Tank: 180 gal
(681.37 liters)
HIN/IMO: SCG31PDBB202

Engines/Generators

Summary/Description

Ready for immediate delivery. In the water and can be sea trialed. Will consider reasonable offer. Slip transferrable thru May 1st 2024. RECENT SURVEY AVAILABLE AFTER ONBOARD INSPECTION FOR THE SERIOUS BUYER. Owner has taken delivery of his new trawler and has started his next journey. If you're lo



