



Queen of Ark

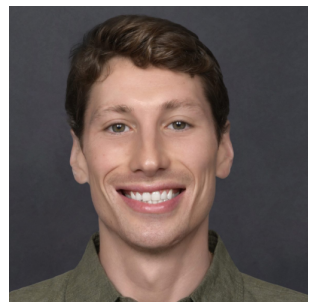
42' (12.80m) 2017 Azimut 42 Fly
Hollywood Florida United States



OVERVIEW

Manufacturer:	<i>Azimut</i>		
Engines:	2 Cummins	Hull Material:	Fiberglass
Engine Model:	QSB 6.7	Cruise Speed:	26 Knots
Engine HP:	425	Max Speed:	36 Knots
Beam:	13' 8"	Cabins/Heads:	2 / 2
Max Draft:	4' 2"	Fuel Type:	Diesel
Water:	105 G (397.47 L)	Fuel:	290 G (1097.77 L)

\$490,500



Data Sheet

Category: Flybridge
Condition: Used
Model Year: 2017
Beam: 13'8" (4.17m)
Max Draft: 4' 2" (1.27m)
Min Draft: 2' 9" (0.84m)
LOA: 43' 7" (13.28m)
Cabins: 2
Sleeps: 6
Single Berths: 2
Double Berths: 1
Full Beam Master: Yes
Heads: 2

Maximum Speed: 36 Knots
Cruise Speed: 26 Knots
Fuel Type: Diesel
Hull Material: Fiberglass
Hull Shape: Deep Vee

Dry Weight: 26455 lbs
Fuel Tank: 290 gal (1097.77 liters)
Fresh Water: 105 gal (397.47 liters)
HIN/IMO: XAX42025G617
In Stock: Yes

Engines/Generators

Engine 1

Cummins
QSB 6.7
Inboard
425HP
316.92KW
Fuel: Diesel
Hours: 1200
Year: 2017

Engine 2

Cummins
QSB 6.7
Inboard
425HP
316.92KW
Fuel: Diesel
Hours: 1200
Year: 2017

Summary/Description

The 2017 Azimut 42 Fly "Queen Of Ark" "Queen Of Ark" has been maintained to impeccable standards since new by the original owners and a professional captain. This includes keeping up with routine maintenance, and regular system checks. This Azimut 420 Fly is the perfect boat for owner operator that

The 2017 Azimut 42 Fly "Queen Of Ark," has been meticulously cared for by her original owners. Since her debut voyage she has had a full time captain who has upheld her to the highest quality standards. "Queen Of Ark" has undergone routine mechanical and system checks. Both owners and captain have insured nothing has gone overlooked.

Upon stepping aboard, "Queen Of Ark" features a beautiful rich golden-brown color teak deck. Creating an elegant and relaxing ambiance.

The flybridge is spacious and offers breathtaking panoramic views. Perfect for our pristine weather south Fl offers.

Below deck, the Azimut 42 Fly features luxurious accommodations for overnight guests. The master stateroom is a sanctuary of comfort and style, complete with a queen-sized berth, en-suite bathroom, and ample storage space. A guest cabin provides additional sleeping quarters, ensuring that everyone onboard enjoys a restful night's sleep. She is powered by twin diesel engines which deliver exhilarating speed and agility on the water.

Joystick docking make this yacht a joy to handle and comfortable for the whole family!

Whether cruising the coast or extended voyages, the "Queen Of Ark" offers an unparalleled experience of luxury, comfort, and adventure on the water. More than just a vessel, she is a catalyst of unforgettable moments and experiences.

Key Features

1000 hour service completed

2 Stateroom Layout with Full Beam Master

Cummins QSB 6.7

Cummins 60HZ Generator

Bow thruster

Xenta Joystick

Sound System: Fusion MS-AV750

(2) JL Audio Speakers on bow

Grill station, Sink and Fridge on Aft

(2) Raymarine instruments at Flybridge and lower Helm - Gold Package

































