



# Meals on Reels

29' (8.84m) 1988 Luhrs 290 Express Sportfish with Tower  
Essex Maryland United States



## OVERVIEW

**\$15,000**

Manufacturer: *Luhrs*

Engines: 2 Jasper

Engine Model: 270's FWC (Re-Manufactured)

Engine HP: 270

Beam: 10' 9"

Max Draft: 2' 5"

Water: 40 G (151.42 L)

Hull Material: Fiberglass

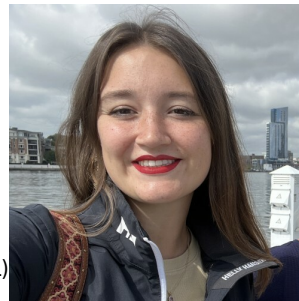
Cruise Speed: 23 Knots

Max Speed: 30 Knots

Cabins/Heads: 1 / 1

Fuel Type: Gas/Petrol

Fuel: 260 G (984.21 L)



## Data Sheet

Category: Saltwater Fishing  
Subcategory: Express Cruiser  
Condition: Used  
Model Year: 1988  
Beam: 10'9" (3.28m)  
Max Draft: 2' 5" (0.74m)  
LOA: 29' (8.84m)  
Cabins: 1  
Heads: 1

Maximum Speed: 30 Knots  
Cruise Speed: 23 Knots  
Fuel Type: Gas/Petrol  
Deadrise: 17°  
Hull Material: Fiberglass  
Hull Shape: Deep Vee  
Bridge Clearance: 14' 6"

lbs  
Dry Weight: 9000 lbs  
Fuel Tank: 260 gal (984.21 liters)  
Fresh Water: 40 gal (151.42 liters)  
Holding Tank: 15 gal (56.78 liters)  
Imported: No  
Builder: Luhrs

## Engines/Generators

### Engine 1

Jasper  
270's FWC (Re-Manufactured)  
Inboard  
270HP  
201.34KW  
Fuel: Gas/Petrol  
Year: 2015  
Location: Port

### Engine 2

Jasper  
270's FWC (Re-Manufactured)  
Inboard  
270HP  
201.34KW  
Fuel: Gas/Petrol  
Year: 2015  
Location: Starboard

## Summary/Description

1988 Luhrs 290 Express Sportfish with Tower

WOW! Here's a fully equipped Luhrs Sportfish with twin inboards (newer long blocks with low hours) and a tower - on land being sold AS/IS! Was ran 2 years ago - seller does not want to get the boat ready again....so this is a good deal for someone that wants to go through the boat and get her going!

JUST REDUCED from \$23,900!

Some of the pictures are from a few years ago when we sold the boat to the current owner - he had also kept it at our marina.

Please call for an appointment...at our marina on land!

## Mechanical Disclaimer

Engine and generator hours are as of the date of the original listing and are a representation of what the listing broker is told by the owner and/or actual reading of the engine hour meters. The broker cannot guarantee the true hours. It is the responsibility of the purchaser and/or his agent to verify engine hours, warranties implied or otherwise and major overhauls as well as all other representations noted on the listing brochure.

## Disclaimer

The company offers the details of this vessel in good faith but cannot guarantee or warrant the accuracy of this information nor warrant the condition of the vessel. A buyer should instruct his agents, or his surveyors, to investigate such details as the buyer desires validated. This vessel is offered subject to prior sale, price change or withdrawal without notice.

