



# BOLERO

42' (12.80m) 1981 Pearson 424  
Marathon Florida United States



---

Daryl Rester    [daryl@suncruising.com](mailto:daryl@suncruising.com)

---

601-850-4357

## OVERVIEW

|               |                |                |            |
|---------------|----------------|----------------|------------|
| Manufacturer: | <i>Pearson</i> | Hull Material: | Fiberglass |
| Engines:      | 1 Westerbeke   | Cruise Speed:  | Knots      |
| Engine Model: | Westerbeke     | Max Speed:     | 7.78 Knots |
| Engine HP:    | 60             | Cabins/Heads:  | 3 / 1      |
| Beam:         | 13' 0"         | Fuel Type:     | Diesel     |
| Max Draft:    | 5' 0"          | Fuel:          |            |
| Water:        |                |                |            |

**\$38,000**



## Data Sheet

Category: Cruisers  
Condition: Used  
Model Year: 1981  
Beam: 13' (3.96m)  
Max Draft: 5' (1.52m)  
LOA: 42' (12.80m)  
LWL: 108' 3" (33.00m)  
Cabins: 3  
Sleeps: 6  
Single Berths: 2  
V Berths: 1  
Double Berths: 1  
Heads: 1

Maximum Speed: 7.78 Knots  
Knots  
Fuel Type: Diesel  
Hull Material: Fiberglass  
Hull Finish: White  
Air Conditioning: Yes

Exterior Color: White  
HIN/IMO: PEA59155M81H

## Engines/Generators

### Engine 1

Westerbeke  
Westerbeke  
Inboard  
60HP  
44.74KW  
Fuel: Diesel  
Year: 1981  
Location: Middle

## Summary/Description

Introducing BOLERO a classic Pearson 424.

### INTRODUCING BOLERO

Recent Price Reduction of \$6,000

A Classic Pearson 424 Aft Cockpit model that is Step on Sail Away or Full Time Live-Aboard ready. Located right here in beautiful Marathon, Florida, she is only a day's sail from Bimini.

The Pearson 424 with large galley, two staterooms, enormous cockpits for boats their size. Two companionway accesses, one from the cockpit and another forward and starboard. The first will take you below with a navigation station to starboard and full-size berth to port. The second takes you to the galley and salon. Her U-Shaped galley allows easy cooking, even underway. The large, comfortable salon yields a perfect space for socializing at anchor, as well as a large capacity for stowage. The forward stateroom holds a V-Berth, bureau of drawers with a vanity.

Bolero is seriously for sale and owner says bring all offers.

#### *Highlights Include:*

- 3 cabins, 1 head.
- Complete remodel of the Galley April 2023
- New Interior cushions (2019)
- Bottom paint & anti-fouling, ablative (2021)
- New Isotherm Fridge with Freezer section (2019)
- New aluminum fuel tank installed 75 gallons (2019)
- New PVC Teak and Holly flooring throughout (2019)
- Standing rigging less than 10 years old
- In Mast furling Mizzen
- 4 6volt West Marine wet cell batteries (2020)

#### *Mechanical/Electrical Equipment:*

- Pulled engine replaced rear main seal with Foley Marine Lifetime warranty (2019)
- Replaced Transmission went from single to double clutch (2019) remanufactured. Borg Warner Velvet Drive
- Solar 480 Watts 2 panels
- Victron MPPT Solar Controller 100/50

• SK Water maker has been pickled since previous owner.

· *Rigging & Sails:*

- Standing rigging less than 10 years old
- In mast furling Mizzen
- Sails in Good shape
- 45lb CQR with 200? of chain
- 44lb Bruce with 200? of chain
- Vertical windlass Lewmar electric

*Galley Equipment:*

- Complete remodel of Galley especially countertops (April 2023)
- New Isotherm fridge system with Freezer section (2019)
- 3 burner stove with oven

*Additional Equipment:*

- Lots of Spare parts
- New electric fuel gauge
- Shower sump pump not installed yet.
- Newer VHF needs to be connected.
- Cockpit shower
- 

Please contact:

Daryl Rester

Sunshine Cruising Yachts

601-850-3457

daryl@suncruising.com







Glamor 2



Photo 0.1





Photo 0



Photo 1.1.2





Photo 1.1



IMG\_4465





Photo 0.2





Photo 0.4



Photo 0.3



Photo 0.6





Salon 1



Salon 2





Salon 3



Salon 4





Salon 5



Salon 6





Salon 7



Galley 1





Galley 2



Galley 3



Galley 4





Photo 8.1





Photo 8.2



Photo 8.3



Aft Cabin 1





Aft Cabin 2



Aft Cabin



Photo 11





Photo 12





Photo 13



V Berth 1

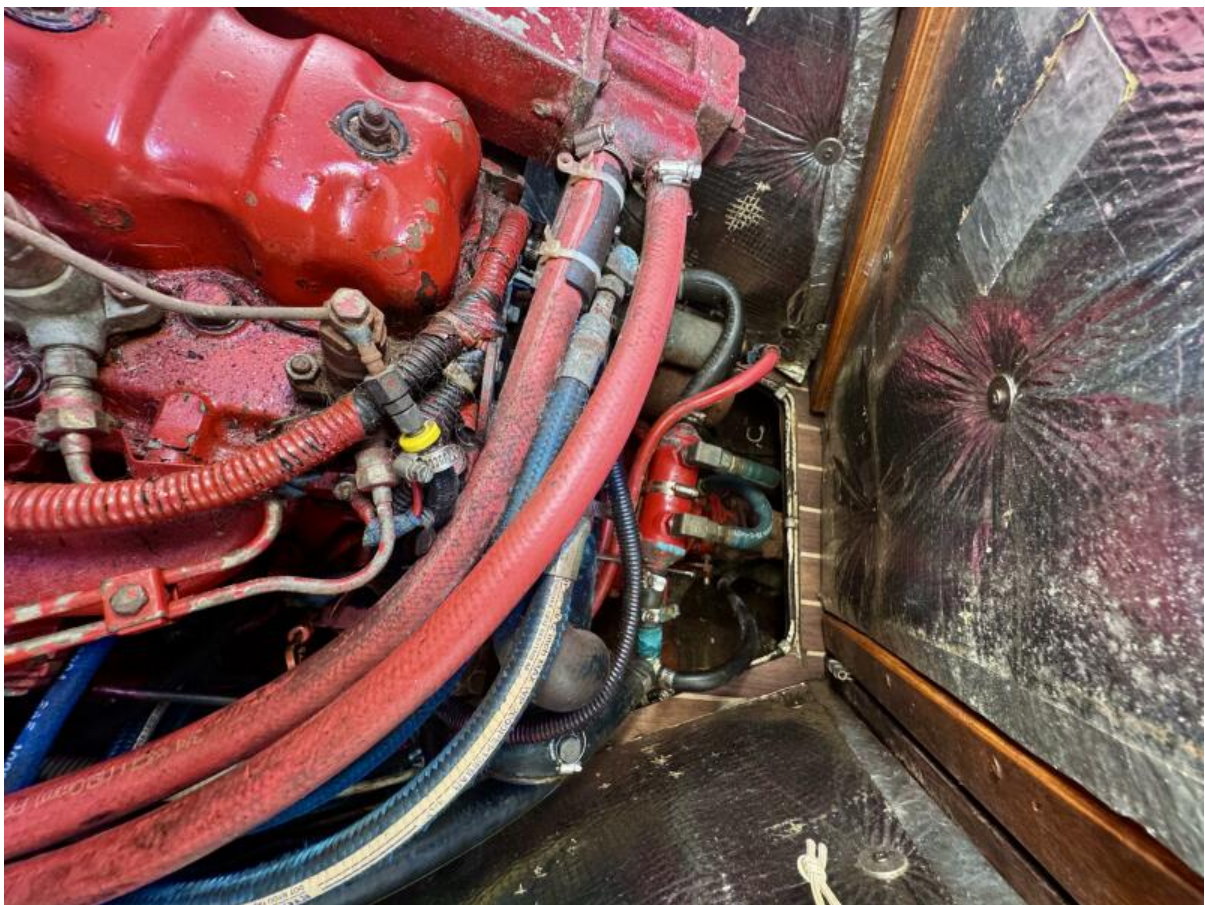


V Berth 2



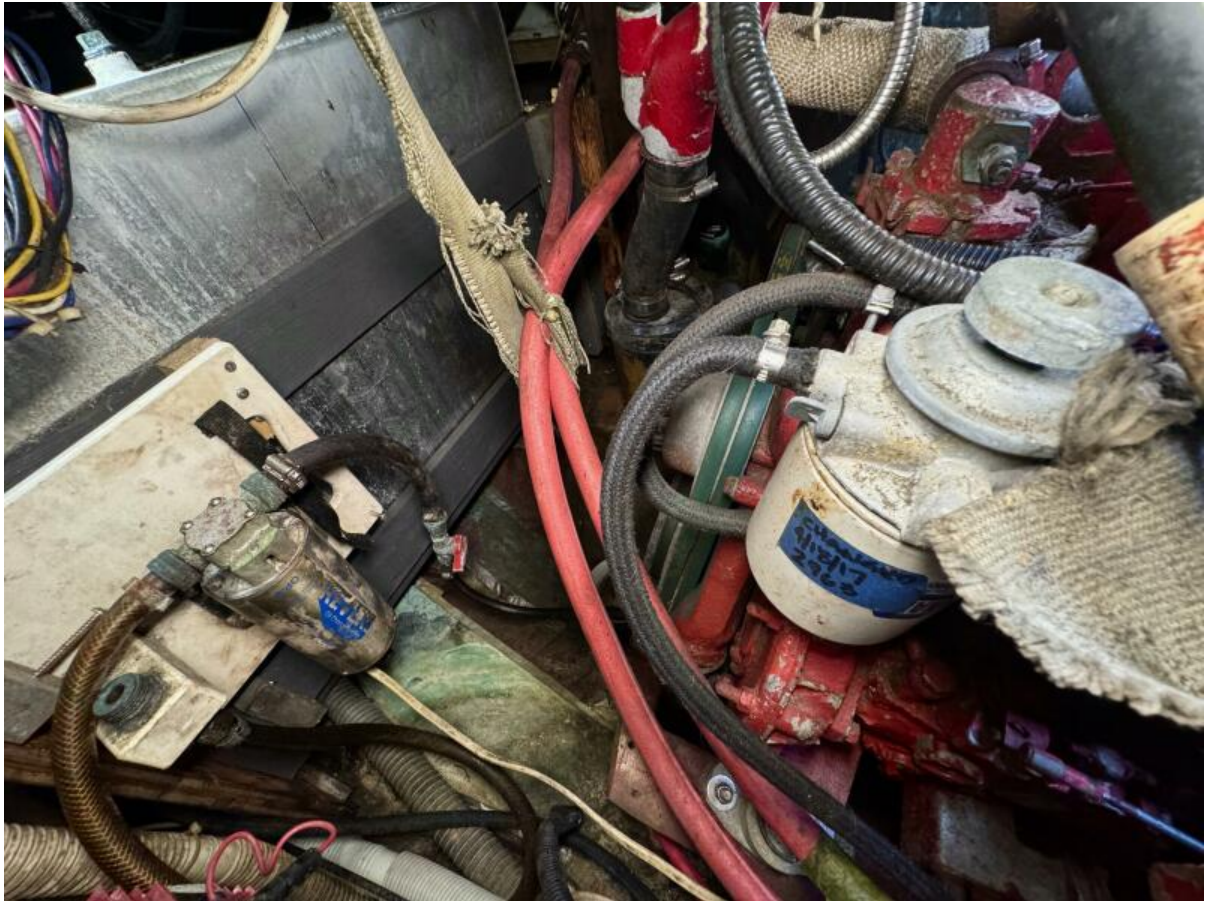


Engine Comp 1

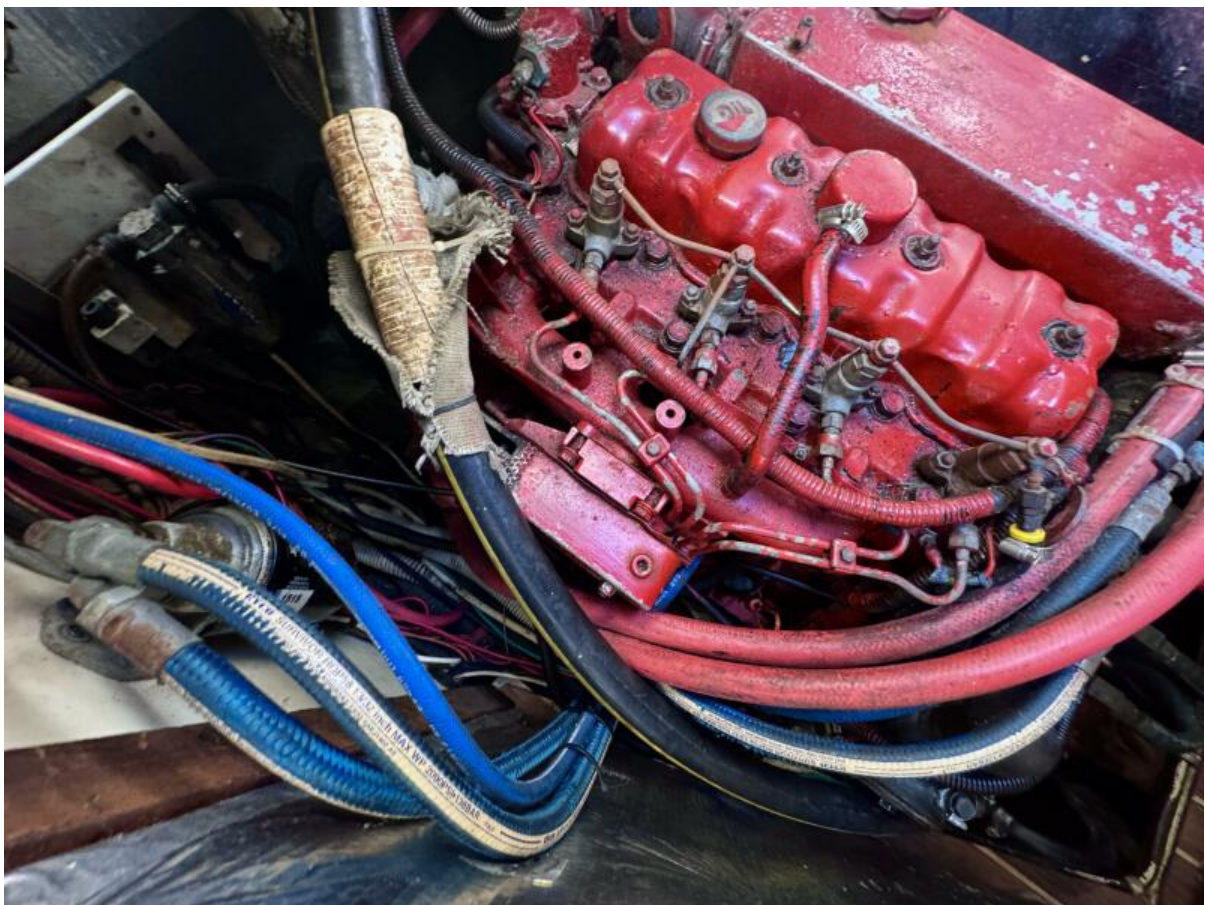


Engine Comp 2





Engine Comp 3



Engine Comp 4





Engine Comp 5



Photo 25