



Starfish

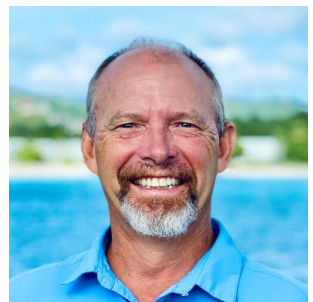
46' (14.02m) 2008 Leopard
St Thomas Virgin Islands (US)



OVERVIEW

\$399,000

Manufacturer:	Leopard	Hull Material:	GRP
Engines:	2 Yanmar	Cruise Speed:	8 Knots
Engine Model:	4JH4AE	Max Speed:	Knots
Engine HP:	54	Cabins/Heads:	4 / 4
Beam:	24' 10"	Fuel Type:	Diesel
Max Draft:	4' 5"	Fuel:	185 G (700.3 L)
Water:	319 G (1207.55 L)		





Data Sheet

Category: Catamaran
Subcategory: Catamaran
Condition: Used
Model Year: 2008
Refit Year: 2019
Beam: 24'10" (7.57m)
Max Draft: 4' 5" (1.35m)
LOA: 46' 4" (14.12m)
LWL: 46' 4" (14.12m)
LOD: 4' 5" (1.35m)
Cabins: 4
Sleeps: 8
Queen Berths: 4
Heads: 4

Knots
Cruise Speed: 8 Knots
Fuel Type: Diesel
Hull Material: GRP
Hull Shape: Catamaran
Hull Finish: White
Air Conditioning: Yes
Bridge Clearance: 70' 9"
Seating Capacity: 8

Gross Tonnage: 37
Displacement: 28076 lbs
Dry Weight: 24206 lbs
Fuel Tank: 185 gal (700.3 liters)
Fresh Water: 319 gal (1207.55 liters)
Holding Tank: 40 gal (151.42 liters)
Builder: Leopard
HIN/IMO: ZA-RACA1059E808
In Stock: Yes

Engines/Generators

Engine 1

Yanmar
4JH4AE
Inboard
54HP
40.27KW
Fuel: Diesel
Hours: 4000
Hours Date: 04-06-2024
Serial #: E07753
Location: Port

Engine 2

Yanmar
4JH4AE
Inboard
54HP
40.27KW
Fuel: Diesel
Hours: 4000
Hours Date: 04-06-2024
Serial #: E07754
Location: Starboard

Generator 1

Northern Lights
9KW
Hours: 3000
Hours Date: 04/06/2024



Summary/Description

Starfish is an immaculate, beautifully decorated, and a well-maintained 46' Robertson & Caine Leopard catamaran. She sleeps 8 charter guests in 4 cabins with en suite heads and separate shower compartments. Built in 2008, she had a major refit in 2019. Mains and generator engine renewed. Main engi

Starfish is an immaculate, beautifully decorated, and a well-maintained 46' Robertson & Caine Leopard catamaran.

Built in 2008 and refit in 2019, she may be the nicest 110V Leopard 46 on the market today.

Her Proud Owners have suffered a health crisis within the family and their meticulously maintained vessel needs to find her New Owners

Starfish was never bare-boated. When she was with the Moorings program (which is where nearly all 4 cabin Leopards begin), she was in the fully crewed division. So no bareboat "credit card captains" were ever in charge.

In 2018, after having exited the Moorings program and after 4 years of chartering by her current owner-operators, and being 10 years old- Starfish was awarded the runner-up Best in Show trophy award for boats under 52' at the VIPCA St Thomas Yacht Show!

They did whatever was necessary to ensure that each time they went on charter 100% of every thing on board was fully functional. They spared no cost to ensure Starfish was well maintained.

As a charter yacht boat, they have very nice items on board — not cheapy plastic items. Nice dinnerware, nice Strahl brand stemware (wine glasses, margarita glasses, champagne flutes), Yeti drink ware (short tumblers, taller tumblers). Board games, etc. Paddle boards (not the cheapy inflatable ones — solid wide ones that are an ease to use), kneeboard, wakeboard, floating party island, other floats, etc. All of that costs a lot of \$\$ if not already on the boat.

New sails, new standing rigging, 14' center console dinghy with 40hp Yamaha, solar, high output water maker.

See More Details...

Additional Details

2008 Leopard 46 - 110V

List of items on STARFISH:

Raymarine Autopilot

SW 3012 Xantrex Inverter Charger 3000 watt 150 amp charger

70 gph CAT pump watermaker with two 4x40" Dow Filmtec membranes

Lifepo4 Lithium battery bank 600 amp hour

12" Axiom charter plotter by Raymarine (new 2020)

Keith Cressman keith@southfloridasailing.com

7046618662



AIS Type B transponder by Raymarine (new 2020)

Standing rigging (new Oct. 2023)

Mainsail and headsail (new Jan. 2022)

Stackpack (new Oct. 2022)

2019 14' AB Center Console dinghy with F40 Yamaha outboard

Bottom paint - Seahawk Island 44 (Oct. 2023)

3 Harken power winches

Solar - 900 watts

Two Yanmar 4JH4AE - 4,200 hours

9kw M773 Northern Lights generator - (diesel engine replaced in 2018)

New air conditioners in salon (2022) and port side hull (2023)

LED interior lights

Freshwater flush heads

Plastic holding tanks

New bathroom faucets and shower fixtures (2022)

Four Whale strainer less diaphragm shower pumps

Lofrans Tigres 1500watt windlass

210' 10mm chain (new Nov. 2023)

Mantus anchor (35kg) (new Nov. 2022)

Bow trampoline (new 2020)

3 refrigeration units replaced

Bosch dishwasher

ULine Ice Maker

Salon cushions and upholstery (new 2020)

Cockpit cushions and upholstery (new 2020)

Four Memory foam mattress pads

Helm and cockpit enclosures (new 2020)

Kayak

Two stand-up paddleboards



Kneeboard

Wakeboard and boots

Warbird Chariot towable

8 person floating party island and various other floating toys

Snorkel gear

Iridium satellite phone

EPIRB

Lifejackets for 14

All required safety gear (flares, etc)

SOS Dan Buoy self-inflating man-overboard pole

Lifesling Overboard Rescue

Fully equipped galley (all kitchen cooking and eating utensils, plates, glasses, Yeti tumblers, wine glasses, champagne flutes, cocktail glasses, pots/pans --- literally everything that anyone would need for cooking and serving meals aboard).

All pillows (4 per cabin, plus decorative pillows) and bedding linens and towels (with plenty of spares) for all cabins.

Additional Description

- Courtesy lights at stairways
- Bi-colour & stern navlights
- Compass at helm position
- 12v DC switch panel
- 2 x 12v outlet sockets at switch panel and at helmstation
- 2 x Fuel tank gauges at helm position
- 1 x House batteries - 600aH Lithium
- 2 x Engine starter batteries - 95aH Lead Acid type 2
- 1 x House battery isolator switches
- 2 x Engine starter battery isolator
- switches
- 2 x Alternators, high output 80aH
- 1 x Electrical spares kit: fuses, relays, fuse holders



- Corian heat-resistant galley worktop surfaces
 - Single lever faucet c/w pull out hose Double s/s sink
 - Dish and cutlery drying recess with drainage
 - Corian cover for drying recess
 - Separate shower compartments
 - 2 - door front-opening fridge / freezer -12v refrigeration
 - Force 10 Gas cooker 4-burner c/w oven & broiler
 - Gas solenoid shut-off valve with control at switch panel & warning light at cooker
 - Gas cylinder & regulator in dedicated locker
 - Stowage space in shelf lockers & drawer units
 - Corian bar counter
-
- 8 x Fire Extinguishers
-
- Morse double lever throttle / gearshift control
 - Sound deadening panels in engine room
 - 2 x Engine room ventilation fans and ducting
 - 2 x Yanmar 4JH4AE 52hp (each) diesel engines with sail drives
 - 2 x Propellers -3-blade feathering Autostream propellers
 - 2 x Fuel deck fillers
 - 2 x Fuel filter / water separators
 - 2 x Fuel tanks aluminium 158USgal / 600Ltr total capacity
 - 2 x Siphon breaks
 - 2 x Exhaust skin fittings (s/s)
 - 2 x Exhaust water locks
 - 2 x Cooling water inlet strainers
 -
 - Guardwires with stanchions, bases, port & stb gates
 - Lofrans Tigress 1500w horizontal windlass c/w hand-held remote
 - Anchor roller fitting c/w chain wear plates
 - Liferaft locker
 - Sliding Companionway door
 - Hardtop over cockpit complete with helmsmans platform, hardtop bimini and lighting.
 - Mainsail outhaul and 2 reefs
 - Custom extended length Swimming ladder c/w teak steps
 - Cockpit table
 - Furler jammer on deck
 - Mainsheet traveller car Lewmar Size 3
 - Mainsheet track Lewmar Size 3
 - Trampoline
 - Helmseat
 - Lifering holder
 - Acrylic windows
 - Hatches - Lewmar: 4 x Size 10 2 x Size 40 6 x Size 60
 - 1 x Size 60 Escape hatch 1 x Size 20
 - Portlights - Lewmar: 4 x Atlantic 30, 4 x Atlantic 60 2 x Size 1
 - Forward window louvre set



- 2 x Spacious cockpit lockers
- 2 x Spacious foredeck lockers
- 2 x Pulpits fitted with seats
- 2 x Pushpits
- 2 x Coachroof s/s handrails
- 2 x Coachroof s/s grab handles
- 4 x Hardtop support s/s grab handles
- 10 x 330mm mooring cleats
- 2 x Lewmar winch handles
- 1 x Winch handle pocket at Helm
- 2 x Drinking can holders
- 2 x Genoa cars - Lewmar Size 2
- 2 x Lewmar Genoa tracks - Lewmar Size 2
- 3 x Halyard jammers on mast
- 2 x Traveller jammers in cockpit
- 3 x Genoa and mainsheet jammers
- 2 x Halyard winches - Lewmar 44CST (on mast)
- 2 x Primary sheet winches - Lewmar 54CST
- 4 x Folding padeyes to allow for spinnaker tackle
- 2 x Padeyes at mast step

- Chart table surface with light
- Instrument and switch panel

Running Rigging and Sails

- Mainsheet (4:1 purchase)
- Mainsheet traveller line (4:1 purchase)
- Main boom topping lift
- Mainsail outhaul and 2 reefs
- 2 x Genoa sheets
- 3 x Halyards (main, genoa & spare)

Mast, Rigging and Sails

- Sparcraft natural anodized mast c/w Antal mast slider system
- Sparcraft natural anodized crossbeam
- ST60 wind indicator
- Profurl genoa furler
- Mainsail full battened c/w 2 rows reefs (Ullman)
- 130% Furling genoa
- 2 x Additional spare 12v wires in mast
- Additional spare conduit with messenger in mast
- Winch handle pocket



Manufacturer Provided Description

Built by Robertson and Caine, and designed by renowned architects Morrelli and Melvin, the Leopard 46 is a blue water cruising catamaran that combines spacious living accommodations, high quality fittings and great performance. Inspired by the Leopard 62, the raised helm station is located in the hard top roof with open access to the cockpit and all controls lead aft, for excellent visibility and ease of manoeuvres. The port and starboard hulls each accommodates two spacious guest cabins each with en suite head and separate shower.

FEATURES

Electrical Equipment

Shore Power Inlet

✓

Generator

✓

Inverter

✓

Electronic

Depthsounder

✓

Log-Speedometer

✓

Wind Speed and Direction

✓

TV Set

✓

Navigation Center

✓

Plotter

✓



Autopilot

✓

Compass

✓

GPS

✓

Cockpit and Bow Speakers

✓

VHF

✓

Inside Equipment

Dishwasher

✓

Electric Bilge Pump

✓

Oven

✓

Manual Bilge Pump

✓

Microwave Oven

✓

Air Conditioning

✓

Electric Head

✓

Hot Water

✓

Refrigerator



✓

Fresh Water Maker

✓

Deep Freezer

✓

Battery Charger

✓

Outside Equipment

Cockpit Shower

✓

Davit(s)

✓

Tender

✓

Solar Panel

✓

Cockpit Cushions

✓

Cockpit Table

✓

Swimming Ladder

✓

Rigging

Steering Wheel

✓



Electric Winch

✓

Sails

Fully Battened Mainsail

✓

Furling Genoa

✓

Engine 1

Engine Make

Yanmar

Engine Model

4JH4AE

Total Power

54hp

Engine Type

Inboard

Drive Type

Sail Drive

Fuel Type

Diesel

Engine 2

Engine Make

Yanmar

Engine Model

4JH4AE

Total Power

54hp



Engine Type

Inboard

Drive Type

Sail Drive

Fuel Type

Diesel

SPECIFICATIONS

Speed & Distance

Cruising Speed

6.95kn

Dimensions

Length Overall

46.33ft

Max Bridge Clearance

70.75ft

Max Draft

4.42ft

Beam

24.83ft

Length at Waterline

44.58ft

Weights

Dry Weight

24,206Lb

Miscellaneous

Seating Capacity

8



Windlass

Electric Windlass

Tanks

Fresh Water Tank

319 Gal ()

Fuel Tank

185 Gal ()

Holding Tank

40 Gal ()

Accommodations

Double Berths

4

Cabins

4

Heads

4

Disclaimer

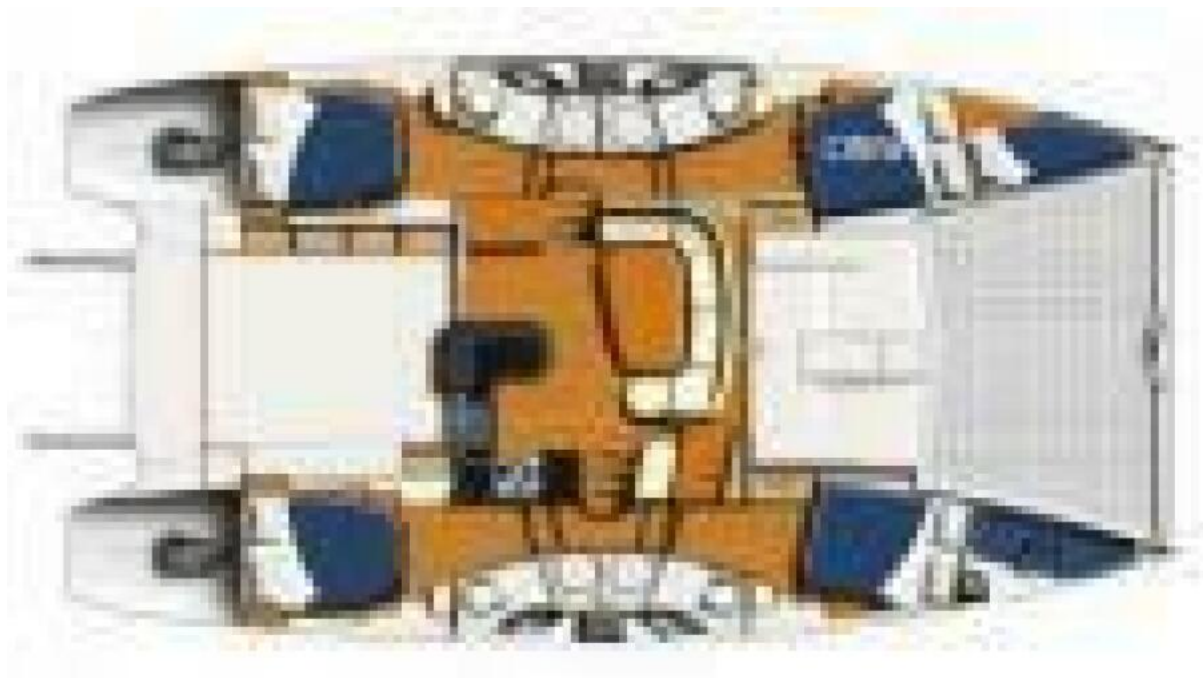
The company offers the details of this vessel in good faith but cannot guarantee or warrant the accuracy of this information nor warrant the condition of the vessel. A buyer should instruct his agents, or his surveyors, to investigate such details as the buyer desires validated. This vessel is offered subject to prior sale, price change or withdrawal without notice.



Leopard 46 Immaculate yacht ready to sail as a private yacht or continue in charter.



Moored in Anegada























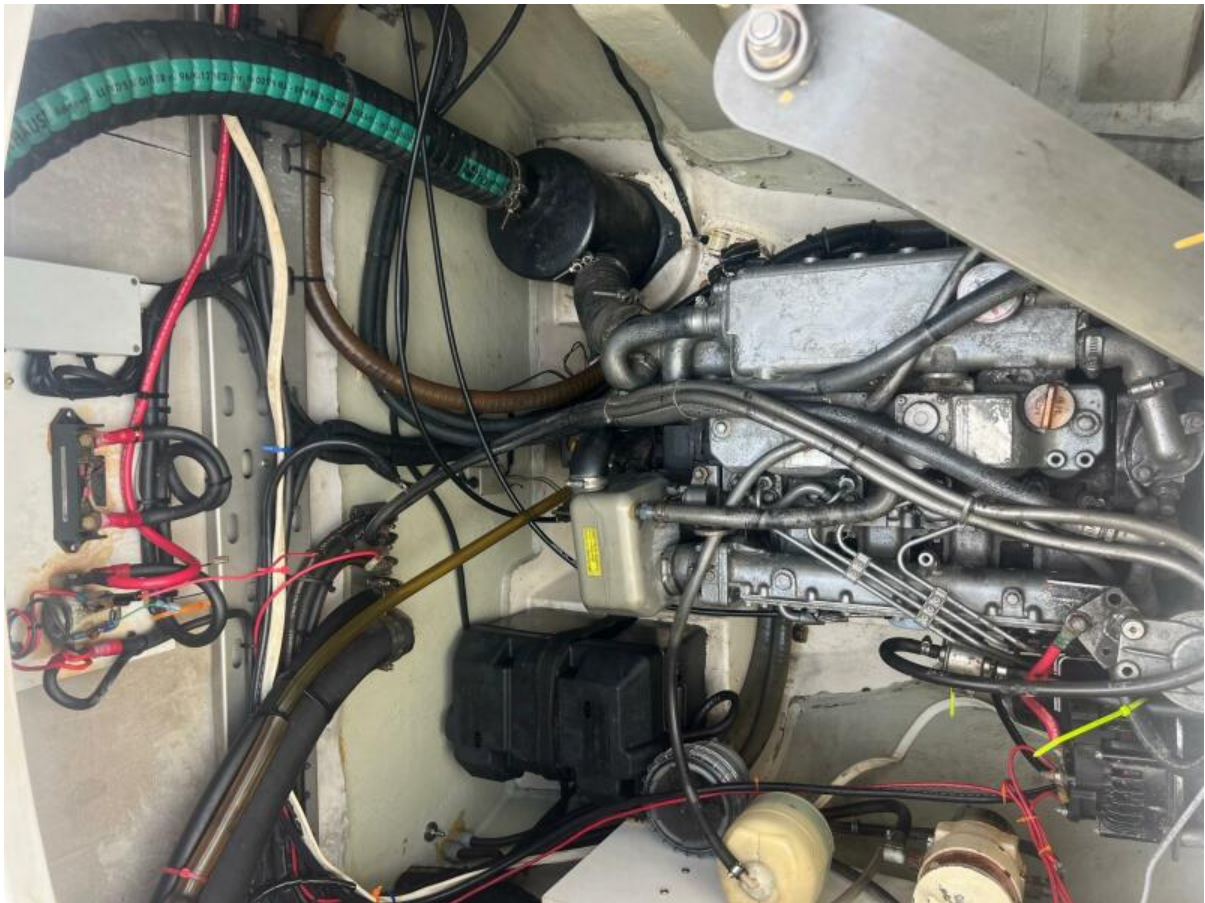




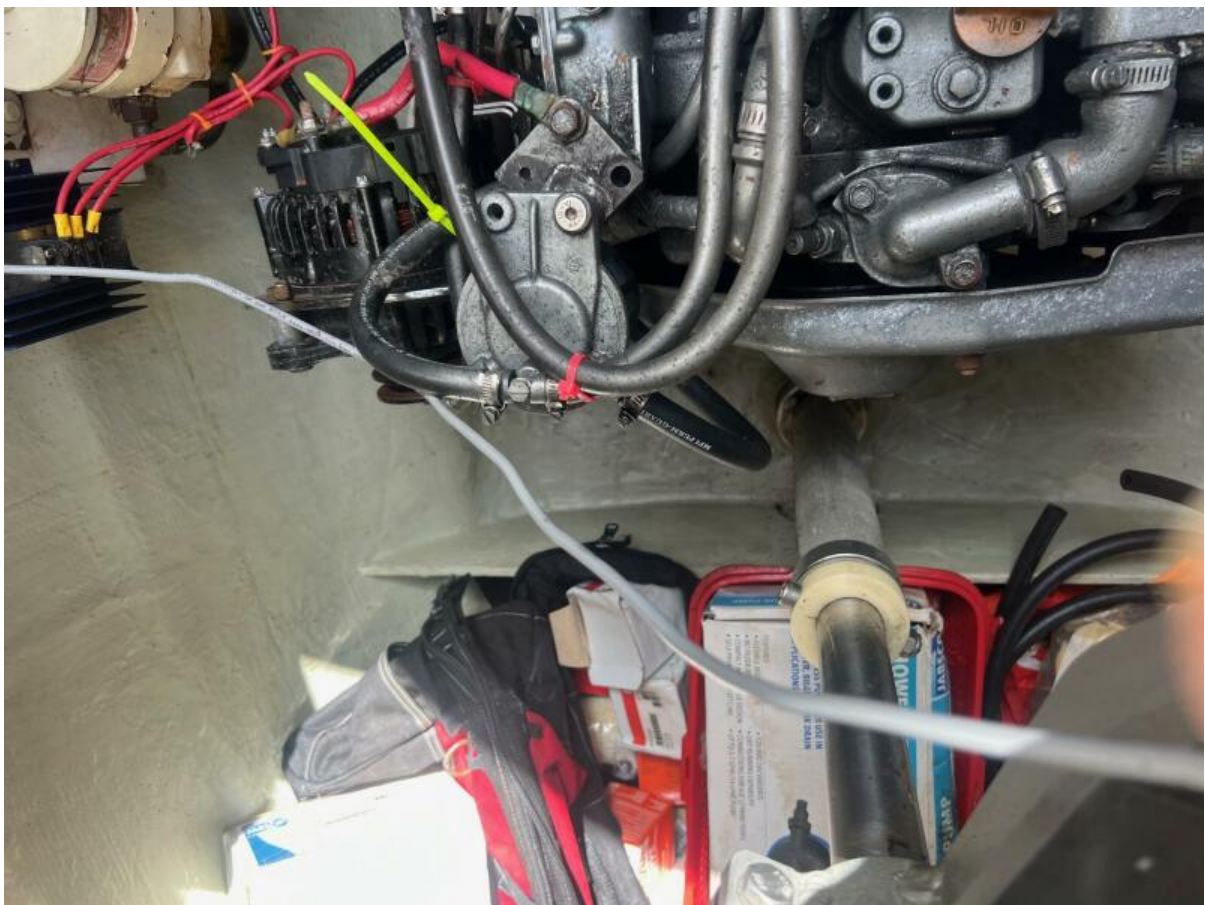
Engine Room Pic _7



Engine Room Pic



Engine Room Pic_1



Engine Room Pic_2



Engine Room Pic_3



Engine Room Pic_4



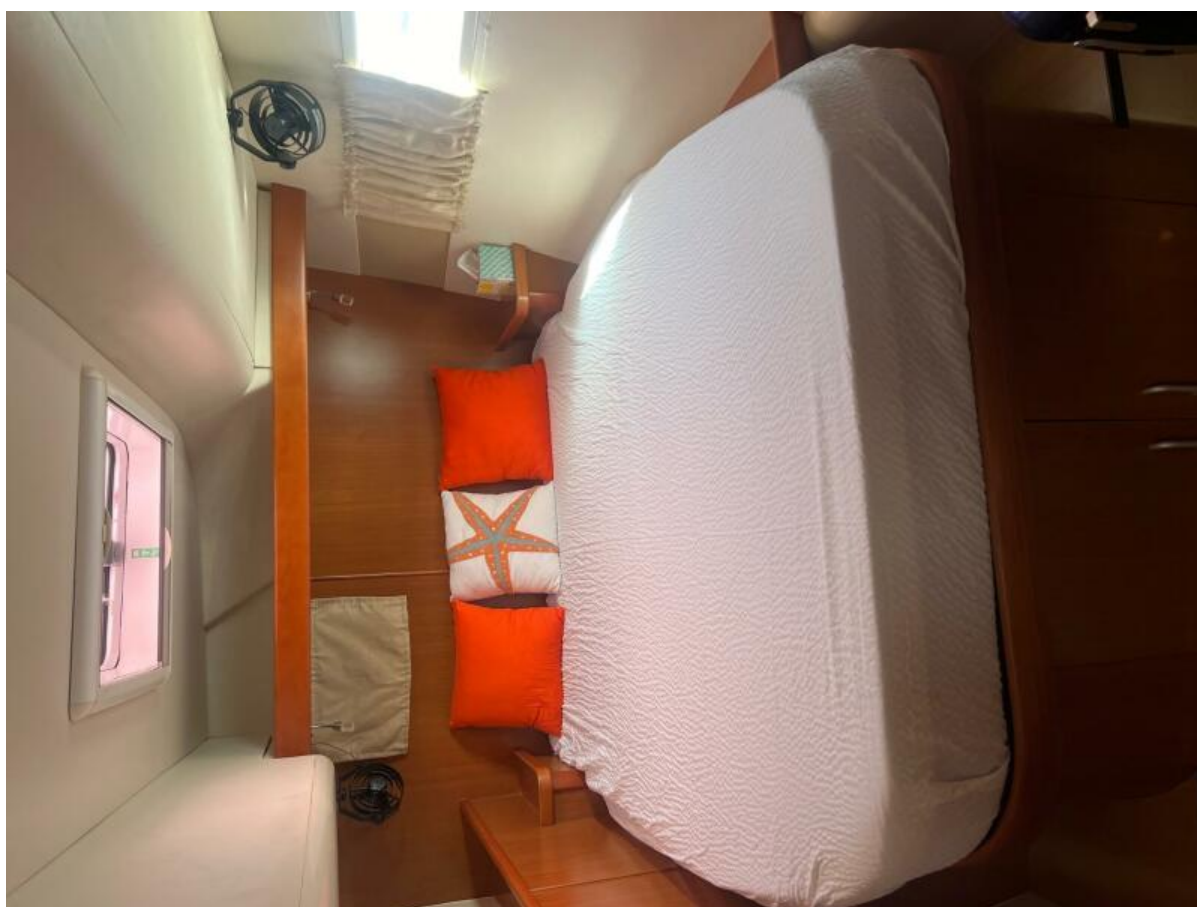
Engine Room Pic_5



Engine Room Pic_6



Port Aft 2



Port_Aft



Port_FWD



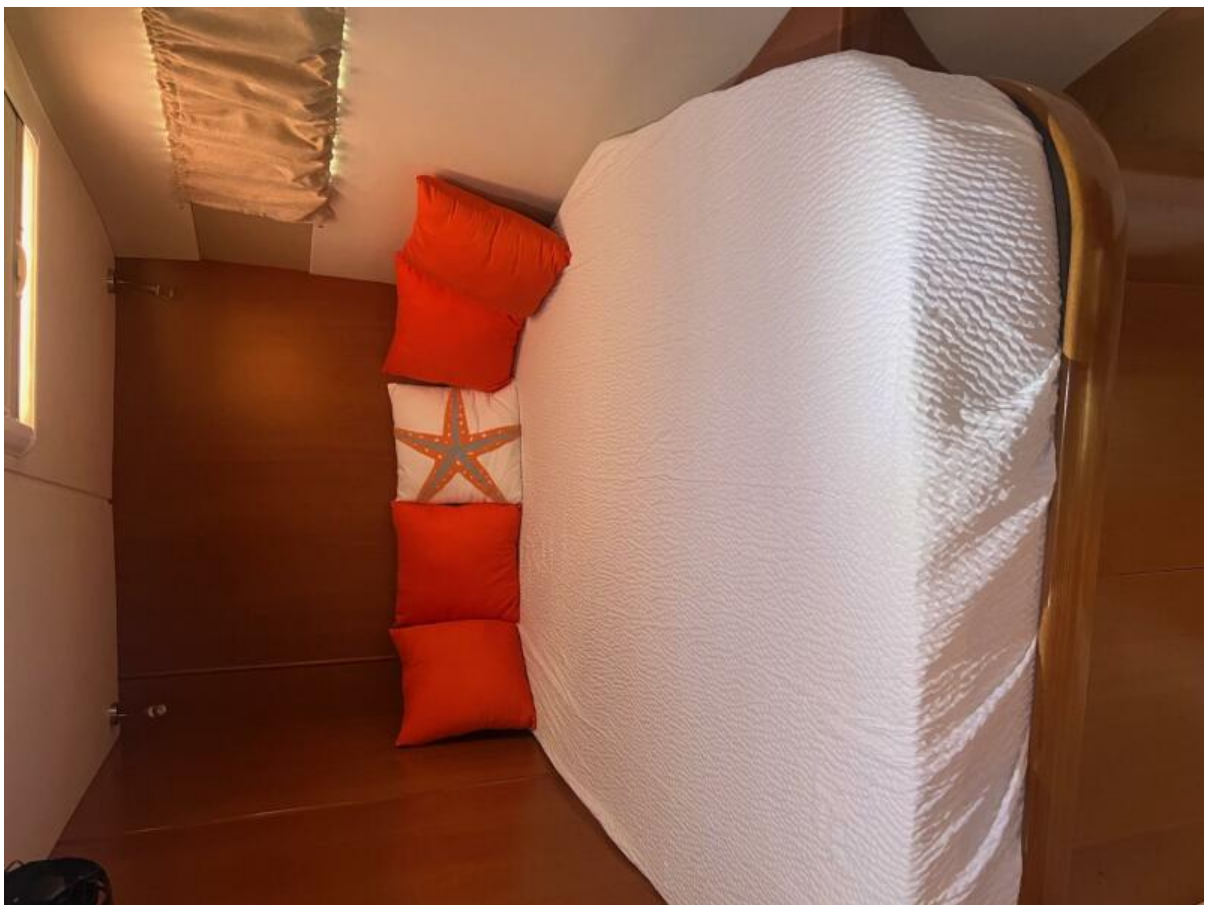
Starboard Aft Cabin



Starboard Forward Cabin



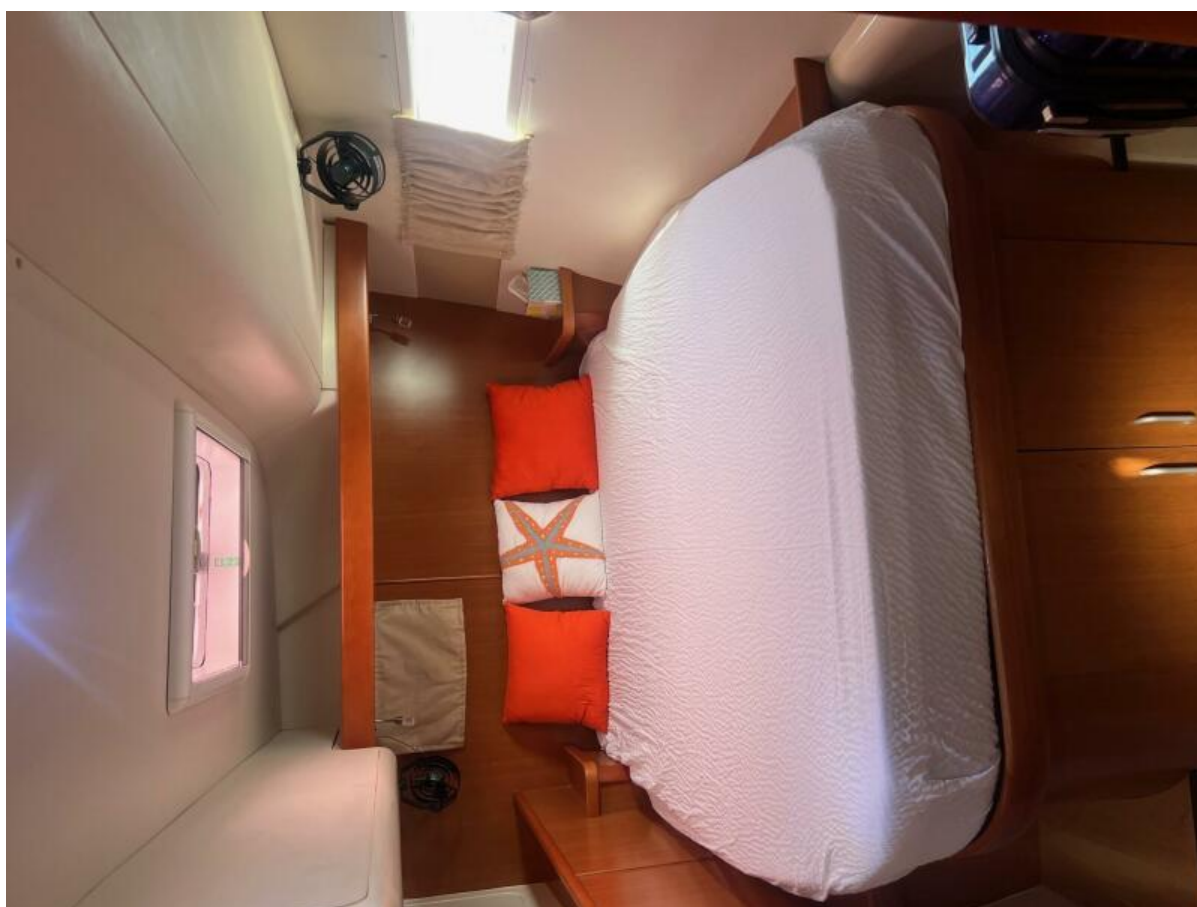
STRBD Forward 2



STRBD Forward



STRBD_AFT



STRBD_AFT2