



New Our inventory

45' (13.72m) 2024 Beneteau Gran Turismo
Seattle Washington United States

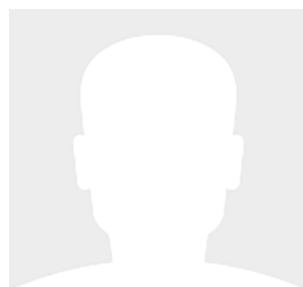


OVERVIEW

Manufacturer: *Beneteau*
Engines: 2 Volvo
Engine Model: IPS600
Engine HP: 440
Beam: 13' 7"
Max Draft: 3' 9"
Water: 106 G (401.25 L)

Hull Material: Fiberglass
Cruise Speed: 20 Knots
Max Speed: 28 Knots
Cabins/Heads: 2 / 2
Fuel Type: Diesel
Fuel: 238 G (900.93 L)

\$1,124,222



Data Sheet

Category: Express Cruiser
Condition: New
Model Year: 2024
Beam: 13'7" (4.14m)
Max Draft: 3' 9" (1.14m)
LOA: 48' 6" (14.78m)
Cabins: 2
Heads: 2

Maximum Speed: 28 Knots
Cruise Speed: 20 Knots
Fuel Type: Diesel
Hull Material: Fiberglass

Displacement: 24782 Fuel Tank: 238 gal
(900.93 liters)
Fresh Water: 106 gal (401.25 liters)
HIN/IMO: BEYGU060F324
Stock #: N90089

Engines/Generators

Engine 1

Volvo
IPS600
Inboard
440HP
328.11KW
Fuel: Diesel

Engine 2

Volvo
IPS600
Inboard
440HP
328.11KW
Fuel: Diesel



Summary/Description

Arriving Summer 2023 Preliminary spec is available The Gran Turismo 45 sets new standards in terms of functionality & on board hospitality. With her large windows, vast sundeck and U-shaped cockpit seating, the GT 45 fosters conviviality and the enjoyment of a great indoor-outdoor experience

Introducing the sleek and sophisticated 2024 Beneteau GT 45, making its debut at the Seattle Boat Show from February 2-11. This stunning yacht boasts luxurious design and cutting-edge technology, promising an unparalleled maritime experience. With its spacious layout and top-tier amenities, the GT 45 is sure to capture the attention of discerning yachting enthusiasts seeking the epitome of elegance and performance. Don't miss the opportunity to witness this exquisite vessel firsthand at the in-water Boat Show in Seattle.

KEY FEATURES

- Volvo ips600 2x323kw (440cv) diesel + joystick
- Salon upholstery trailblazer 35 cloud
- **Trim level comfort**
- 49 l cockpit refrigerator
- Kenyon electric grill - 115 v - 60 Hz (swim platform)
- Multifunction Garmin 12" screen
- Port and starboard sliding windows
- **Pack premium foredeck vita 16**
- Forward sun deck: retractable canopy
- Forward sun deck: cushion + protective cover + 2 cup holders(upholstery depending on version)
- Forward sun deck: courtesy lighting
- **Pack sport chic plus 2 cabin**
- Glazed cockpit door + aft electric bay window
- Wheel helm upgrade
- Cockpit upholstery carbon fiber
- Cockpit: led strip
- Interior: white-laquer finished furniture
- **Pack electronic US**
- Induction charging station (mobile telephone)
- Ship control (web server)
- Broadband 4G Garmin radar
- Multifunction Garmin 8416 screen + depth sounder (replacing the 12") 315i VHF + Garmin 800 AIS
- Garmin autopilot
- Cockpit upholstery marlin aust
- Cockpit upholstery vita 16
- Mooring anchoring kit
- Sunshade for the cockpit black
- Aft sun pad protective covers
- Hydraulic swim platform
- Dinghy cradle integrated in the swim platform

- Electrical inflater for dinghy
- Infinity luxe cream cockpit carpet
- Exterior wheelhouse curtains black
- 115 v shore power with automatic retractable reel
- Aft lighting (hard top)
- Deck searchlight
- Underwater lights
- Ice maker in the cockpit
- Cockpit air conditioning (115v - 60hz - 16 000 BTU)
- 115v 60hz air conditioning in salon and cabins 24000btu
- Convertible berth salon with eclectic table leg
- Inverter 2000va 12v - 115 v
- Porthole mosquito screens
- Sunroof glass curtains
- Delivery & commissioning in Seattle
- GE 8, 5KVA 115V60 MASE generator

CONSTRUCTION

HULL

- Air Step system ®
- White hull
- Composition:

Sandwich (polyester resin - fiberglass - balsa core)

Hull counter molding laminated in monolithic (polyester resin - fiberglass)

- 8 Opening portholes

DECK

- Composition:

Sandwich (polyester resin - fiberglass - balsa core)

Deck counter molding laminated in monolithic (polyester resin - fiberglass)

DECK EQUIPMENT

- Courtesy light in cockpit
- Navigation lights

MOORING - ANCHORING GEAR

- Bow fitting with anchor securing system
- 1 000 W Electric windlass (with remote control)
- 2 Forward cleats, 2 central and 2 aft in stainless steel

SAFETY ON DECK

- Half open pulpit in stainless steel with guardrail and handrail
- 2 Stainless steel handrails on access to sidedeck steps

COCKPIT

- Self-bailing cockpit
- Access through a gate with safety catch
- Cockpit windows
- 8 People salon
- Solid wood cockpit table
- 4 Storage lockers (under the seats)
- Cockpit galley with sink, foldaway tap, Storage & Garbage bin
- Engine access hatch
- Space for cased life raft
- Cockpit shower with mixer tap
- Swim platform (3,62 x 1,33 m / 11'11" x 4'4") + Swim ladder
- Hand rail on rear table
- Assorted exterior upholstery:

Marlin Auster (standard)

Dolce 80

Vita 16

- Sun deck
- Tender garage:

Dinghy (230 cm / 9')

Electrically-opened, using 2 electric struts

Access to engine room by the garage

- Aft galley featuring BBQ grill (Option)



- Pre-wiring for 40" TV (115 V 60 Hz + RA670)
- Audio Pack Fusion: Fusion RA210 + 2 Speakers
- Cockpit windows with opening portholes to port and starboard

STEERING STATION

- Polyester, Steering station to starboard
- Pilot seat with function Bolster
- Double bench seat with Bolster option (Co-pilot)
- Foldable footrest
- Pilot and co-pilot upholstery matching the cockpit salon upholstery
- 2 Handrails
- Gloss black dashboard with grey padded cover
- Volvo 4" screen
- Space for electronics (12" or 16")
- Polyester hard-top with built-in electric sunroof
- Glass windscreen with 2 fitted electric wipers
- Anti-glare surface in grained polyester under windscreen
- 4 Cup holders

INTERIOR

- 3 gloss Alpi grey walnut woodwork
- Brown oak laminated floors
- Direct and indirect LED lighting

GALLEY

Headroom: 1,95 m / 6'5"

- Double stainless steel sink, with mixer
- Microwave oven (115 V - 60 Hz)
- Ceramic hob (115 V - 60 Hz)
- White corian type countertop
- 218 L Fridge Freezer



- Covered stowage drawer
- Garbage bin
- Units with white
- 4 Storage cupboards
- 1 Hull window with built-in opening porthole
- Venetian blinds
- 2 115 V Power outlets
- Leather covered handrails

SALON

Headroom: 1,99 m / 6'6"

- Sofa seating for 4, upholstery Talisman Chinchilla fabric (standard)
- Wooden table, grey walnut - Stainless steel foot
- TV Pre-wiring - 24" max (Amplifier Fusion RA670 + Fusion 6"

Loudspeakers + TV mounting)

- 4 Storage cupboards
- 2 Storage lockers (under the seats)
- 2 Skylights
- 1 Hull window with built-in opening porthole
- Venetian blinds
- 1 115 V Power outlet
- Direct and indirect LED

VIP CABIN (FORWARD)

Headroom: 1,94 m / 6'4"

- 1 double bed (1,57 x 1,92 m / 5'2" x 6'4") or 2 single beds (sliding system)
- Marine mattress
- Slatted bed base
- 2 Reading lights
- 2 Shelving unit



- 2 Hanging lockers
- 2 Cupboard with shelves
- 1 115 V Power outlet
- TV Pre-wiring (Amplifier Fusion RA670 + Fusion 6" Loudspeakers +

TV mounting)

- 2 Panoramic windows with opening ports and blinds
- Venetian blinds
- Opening deck hatch with mosquito screen/blind
- Direct and indirect LED

VIP HEAD COMPARTMENT (FORWARD)

Headroom: 1,95 m / 6'5"

- Sink with mixer tap
- Mirror
- 2 Storage cupboards
- 1 Opening porthole
- Venetian blinds
- Shower separated by translucent door
- Electric toilet Quiet Flush
- Slatted floor
- 115 V Power outlets

OWNER'S CABIN (AFT)

Headroom: 1,93 m / 6'4"

- Double berth (1,50 x 1,99 m / 4'11" x 6'6")
- Marine mattress
- Slatted bed base
- Padded headboard with indirect lighting
- 3 Storage lockers
- 1 Hanging locker
- Pre-wiring for 22" TV (Amplifier Fusion RA670 + Fusion 6"

Loudspeakers + TV mounting)

- 2 115 V Power outlets
- 2 Panoramic windows with opening ports and blinds
- Venetian blinds
- 1 Light well with shutter

OWNER'S HEAD COMPARTMENT (AFT)

Headroom: 1,98 m / 6'6"

- Sink with mixer tap
- Mirror
- 3 Storage cupboards
- 1 Opening porthole
- Venetian blinds
- Shower separated by translucent door
- Electric toilet Quiet Flush
- Slatted floor
- 1 115 V Power outlet

ENGINE

Volvo Diesel IPS 600 engine 2 x 440 HP

- Throttle & controls

Neutral (Activation of neutral)

Station (Activation of the station)

Trim (Trim adjustment - only on Z-drive versions)

- Docking Joystick
- Fuel filter with decanter
- Sea water filter
- Air intakes on the deck for engine compartment cooling
- Engine room foam soundproofed
- Fire extinguishing system activated from the steering station

- Stainless steel fuel fill
- 2 x 450 L / 119 US Gal Aluminum fuel tanks

Steering system:

- Electric steering
- 2 Bases or Pods with counter-rotating propellers
- Electrical engine controls
- Volvo IPS:

Trip computer

Cruise control

Single lever

Low speed

- Volvo Z-Drive:

Trip computer

Cruise control

Tow mode

Single lever

Power trim assistant

ELECTRICITY

- 2 engine batteries (12 V - 115 Amp) + 3 service batteries (12 V -115 Amp) + Electrical gauge
- 1 Extinguisher
- Load balancer
- Battery charger (12 V - 40 Amp)
- Antenna pre-wiring
- Interior power outlet 115 V
- Shore power socket (115 V - 32 A)
- Roller for shore power lead (115 V - 60 Hz)
- GE 8, 5KVA 115V60 MASE generator
- Spotlights and LED reading lights



PLUMBING

- 2 Rotomolded water tanks, capacity of 200 L / 53 US Gal each +Electrical gauge
- Stainless steel water fill
- Water pump for pressurizing hot/cold water system
- Shore freshwater supply
- 40 L / 11 US Gal Water heater working off engine exchanger and 115 V
- 2 Bilge pumps:
 - 2 Electric bilge pumps (50 L/minute)
 - 1 Manual bilge pump (30 L/minute)
- 120 L / 32 US Gal Rigid holding tank

SMART BOARD AND MISCELLANEOUS ITEMS

"SEANAPPS" smart technology:

- For monitoring the boat's status and receiving alerts as well as maintenance advice via the associated mobile applicatio.
- The type of information collected (GPS position, batteries, engine info, navigation data, etc.) varies according to the boat's configuration.
- Smoke detector

Disclaimer

The company offers the details of this vessel in good faith but cannot guarantee or warrant the accuracy of this information nor warrant the condition of the vessel. A buyer should instruct his agents, or his surveyors, to investigate such details as the buyer desires validated. This vessel is offered subject to prior sale, price change or withdrawal without notice.

























