



YEAH BUOY

30' (9.14m) 2020 Chris-Craft Launch 30
Miami Florida United States

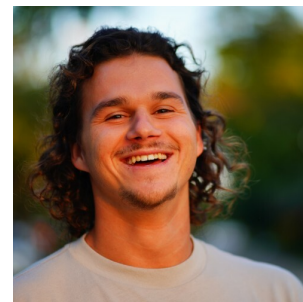


OVERVIEW

\$135,000

Manufacturer: *Chris-Craft*
Engines: 1 Volvo Penta
Engine Model: V8 300-C 5.3L
Engine HP: 300
Beam: 10' 0"
Max Draft: 3' 3"
Water: 35 G (132.49 L)

Hull Material: Fiberglass
Cruise Speed: Knots
Max Speed: Knots
Cabins/Heads: /
Fuel Type: Gas/Petrol
Fuel: 142 G (537.53 L)



Data Sheet

Category: Bowrider
Subcategory: Cruisers
Condition: Used
Model Year: 2020
Beam: 10' (3.05m)
Max Draft: 3' 3" (0.99m)
Min Draft: 1' 11" (0.58m)
LOA: 30' (9.14m)
LWL: 23' 1" (7.04m)
LOD: 29' 9" (9.07m)

Knots
Knots
Fuel Type: Gas/Petrol
Deadrise: 20°
Hull Material: Fiberglass
Hull Shape: Modified Vee
Bridge Clearance: 4' 6"

lbs
Dry Weight: 8700 lbs
Fuel Tank: 142 gal (537.53 liters)
Fresh Water: 35 gal (132.49 liters)
Imported: No
Builder: Chris-Craft

Engines/Generators

Engine 1

Volvo Penta
V8 300-C 5.3L
Inboard
300HP
223.71KW
Fuel: Gas/Petrol
Hours: 346
Location: Middle

Summary/Description

2020 Chris-Craft Launch 30

This boat's layout is thoughtfully designed for both entertainment and ease of use. The spacious, sophisticated cockpit, with its plush seating and a layout that encourages socializing, is perfect for hosting family and friends. Whether you're enjoying a leisurely day on the water or an exhilarating adventure, this vessel caters to all your needs.

Below the surface, the twin engines offer an effortless and precise cruising experience, ensuring a smooth ride that's both powerful and reliable.

This rare 2020 Chris-Craft Launch 30 Heritage Edition offers not only timeless beauty but also practicality. Its heritage edition status further underlines the classic charm and craftsmanship that Chris-Craft is renowned for. Don't miss the opportunity to own this exceptional boat.

Contact us for a firsthand experience, and make it yours today.

Manufacturer Provided Description

Take 10 for a leisurely cruise or a heart-pounding thrill ride. The captain assumes control from a luxurious double-wide seat with beautiful gauges and full instrumentation. With exhilarating horsepower on demand, the Launch 30 is made for watersports or tight turns around the bay.

The wider Launch 30 includes generous fore and aft seating, with a double-wide captain's chair that allows the driver to share the view. The bow pit wraps several passengers in comfort. At the stern is a wide platform with handy transom shower. A head with sink, including a holding tank and dockside pumpout, is tucked below. Powered by a thrust of horsepower and equipped with a larger fuel tank, the Launch 30 is made for extended cruising.

Standard Features

- Mercury - Push Button Start
- Teak Maintenance Kit
- Teak Caulk Color Choice - Black or Blonde
- 3 Year - Chris-Craft Protection Plan
- 5 Year - Transferable Hull/Structural Warranty
- Bow Scuff Plate - SS
- Certifications and Standards - NMMA, ABYC, USCG
- Color Selections - Boot Stripe - Multiple Color Selections
- Color Selections - Base Gel, Ivory Cream
- Deck Fill Plates - SS
- Deck - Diamond Pattern Non-Skid, Fiberglass
- Flag/Pennant - Embroidered Chris-Craft and US Flag Kit with SS Magnetic Pole and Base
- Gunnel Trim Rubrail - Molded PVC with SS Insert
- Hardware - Bow and Stern Eyes, SS
- Hardware - Bow Light Cover, SS
- Hardware - Chrome Plated SS Fasteners
- Hardware - Cleats, SS Mooring
- Hardware - High-End Fit and Finish with 316L SS and Chris-Craft Logo

- Hardware - Thru-Hull Fittings, SS
- Hull - Chris-Craft Trademark Tumblehome Design
- Hull - Deep-V Bottom with Flared Bow
- Hull - Deck Joint - Mechanically, Chemically Bonded
- Ladder, swim platform - 3 step, SS, hidden
- Lighting - Navigation Lights, SS and International Compliance
- Logo - SS, Chris-Craft Branded
- Ski Tow - Stainless Steel
- Swim Platform - Integral
- Swim Platform Grabhandle - SS
- Beverage Holders - SS
- Bolsters - Padded Gunwhale Mounted
- Drains - SS
- Grabrails - SS
- Helm - binnacle mount controls
- Helm - Compass, Dash Mounted
- Helm - Dash, Gauge and Switch Panels with Silver Perforated Panels
- Helm - Dash Light Dimmer
- Helm - Ignition Safety Switch(es)
- Helm - Model Designator, SS
- Helm - Steering Wheel, Mahogany
- Helm - Steering, Tilt with Power Assist
- Helm - Stereo Remote, MP3/USB Inputs with Fusion Bluetooth Enabled
- Lighting - LED Courtesy
- Outlets/Input - 12V Accessory Outlet(s)
- Outlets/Input - USB Auxiliary Input
- Speakers - JL Audio Sound System (*includes transom speakers)
- Stereo System - Fusion, AM/FM/Bluetooth/USB with amp and subwoofer
- Upholstery Construction - High Density Foam with Antimicrobials and Open Cell Mesh for Drying
- Vinyl - Heavy Duty, Stain/UV Resistant
- Vinyl - Multiple Design/Color Selections
- Windscreen - Curved Tempered Glass
- Windscreen - SS Frame
- Battery Charger with galvanic isolator
- Battery Switch with Breakers
- Battery Tray(s)
- Bilge Pump - highwater with Autofloat Switch
- Bilge Pump - with Autofloat System
- Electric Wiring - Color Coded and Numbered with Duetch Connectors
- Electric Wiring - tinned copper
- Electrical Bonding System
- Fuel System - EPA Compliant

Standard Equipment

- Twin Mercury V8 6.2L (300x2 HP) B3 DTS
- Teak - Beverage Holder Accents
- Teak - Cockpit Steps
- Air Intakes - SS
- Anchor - Bow Locker - with Teak and Chris-Craft Logo Inlay

- Hull - Stringer System and Liner, 1 Piece Fiberglass Foam Filled for Flotation and Noise Reduction
- Top - Bimini canvas top with SS bows and color fast acrylic
- Trim Tabs - Lenco
- Ventilation Grates - SS
- Door - Wind, Hinged, Folds to Deck in Bow Area
- Helm - Depth Finder - LCD
- Helm - Digital Gauge Package, Chris-Craft Branded
- Helm - Engine Controls, Electronic Control - EVC/DTS/DEC
- Helm - Horn, Electric Trumpet(s)
- Seating - Aft Cockpit, Port and Starboard Rear Facing Sun Loungers
- Seating - Aft U-Shaped
- Seating - Forward, Circular with Forward Facing Port and Starboard Lounges
- Seating - Helm, Double Driver's Side with Flip-Up Bolster (*Electric Optional)
- Seating - portside passenger, bucket with integrated SS handrails, flip-up bolsters and mahogany inserts
- Seating - Sunpad, Large Aft with Transom Walk-Over (*Includes Filler Pad)
- Shower - Transom
- Stowage - Aft Cockpit, Underseat
- Stowage - aft deck compartments
- Stowage - Bimini, Dedicated Under Engine Hatch
- Stowage - Bow, Port and Starboard Recessed
- Stowage - Coaming with Beverage Holders
- Stowage - Fender, Hidden
- Stowage - In-Floor Ski/Rod
- Stowage - Cooler, soft side with storage
- Stowage - Port and Starboard Underseat
- Corian solid surface counter tops
- Toilet - Porti-Potti
- Bilge System - Electric with Blowers
- Engine Compartment Stowage
- Engine Hatch - Emergency Lift with Jumper Posts
- Engine Hatch - with SS Hinges, Electric Rams
- Engine Hatch Insulation - Acoustical Barrier, Silver Mylar
- Fire Extinguish System - Automatic with Manual Override
- Fuel System - Aluminum Tanks with Anti-Siphon Valves and Electric Sending Units
- Pump - freshwater, pressurized
- Water / Holding Tank Level Monitor - electric

Mechanical Disclaimer

Engine and generator hours are as of the date of the original listing and are a representation of what the listing broker is told by the owner and/or actual reading of the engine hour meters. The broker cannot guarantee the true hours. It is the responsibility of the purchaser and/or his agent to verify engine hours, warranties implied or otherwise and major overhauls as well as all other representations noted on the listing brochure.

Disclaimer

The company offers the details of this vessel in good faith but cannot guarantee or warrant the accuracy of this information nor warrant the condition of the vessel. A buyer should instruct his agents, or his surveyors, to investigate such details as the buyer desires validated. This vessel is offered subject to prior sale, price change or withdrawal without notice.







