



Diggin It

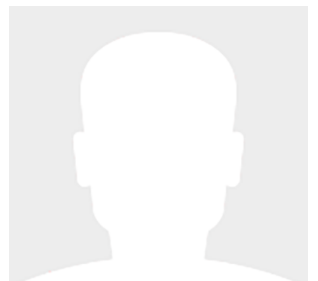
68' (20.73m) 2015 Sunseeker Predator 68
New Rochelle Pennsylvania United States



OVERVIEW

\$1,499,000

Manufacturer:	Sunseeker	Hull Material:	Fiberglass
Engines:	2 MTU	Cruise Speed:	24 Knots
Engine Model:	8V 2000 M94	Max Speed:	Knots
Engine HP:	1252	Cabins/Heads:	3 / 3
Beam:	16' 9"	Fuel Type:	Diesel
Max Draft:	5' 2"	Fuel:	925 G (3501.5 L)
Water:	211 G (798.72 L)		



Data Sheet

Category: Motor Yachts

Condition: Used

Model Year: 2015

Beam: 16'9" (5.11m)

Max Draft: 5' 2" (1.57m)

LOA: 68' (20.73m)

LWL: 53' 10" (16.41m)

Cabins: 3

Heads: 3

Knots

Cruise Speed: 24 Knots

Fuel Type: Diesel

Hull Material: Fiberglass

Dry Weight: 82209 lbs

Fuel Tank: 925 gal (3501.5 liters)

Fresh Water: 211 gal (798.72 liters)

HIN/IMO: XSK06160G415

Engines/Generators

Engine 1

MTU

8V 2000 M94

Inboard

1252HP

Fuel: Diesel

Engine 2

MTU

8V 2000 M94

Inboard

1252HP

Fuel: Diesel

Summary/Description

Breathtaking in every sense of the word - nothing signals your arrival like the Predator 68. Piercing through waves with ease, it's exhilarating performance is matched only by it's unmistakable styling.

Breathtaking in every sense of the word - nothing signals your arrival like the Predator 68. Piercing through waves with ease, it's exhilarating performance is matched only by it's unmistakable styling.

Exquisite interior and captivating design are prominent throughout the entire yacht - a classic example of Sunseeker design ingenuity. The extravagant sliding roof adds a sense of occasion to every journey - especially those undertaken at top speeds. Built to both thrill and inspire, you can't help but fall for this symbol of success.

USA Package

- Air Conditioning to tropical specification with second shore power inlet
- Generator Onan 23kw 60Hz (23MDKBV) upgrade
- Sanshin Twin Beam remote controlled Searchlight HR-1012
- Fresh water deck wash system with outlets forward and aft including deck wash hose kit
- Additional pair 12" Oval Mooring Cleats fitted to the aft lower edge of the hull band facing aft
- Bow Sunbathing Cushions with folding back rests
- Fire and bilge flood monitoring alarm system 6 zone
- Low level LED side deck lights - 8 per side
- Glendinning Cablemaster - 1x power feed and recovery AC shorepower cable
- Aerial 2.4 metre Whip for FM Radio to match VHF Aerial on Radar arch
- TV Shore cable inlet connection socket fitted at stern
- Electric canopy for aft cockpit
- Splendide Washer/Dryer WDC7100XC
- U-Line Wine cooler
- Water purifier for ice maker General Ecology Nature Pure in-line system
- Sunseeker Safety Kit
- Safe - 2 brick - with Digital lock

Construction

- Hand-laid GRP
- Gel coat including stripes
- Vinylester skin coat with powderbound mat
- Stitched multi-axial reinforced single skin bottom
- Balsa cored hull topsides
- PVC foam cored deck and superstructure
- Hull stiffened with longitudinal stringers supported by transverse bulkheads and floors

Deck

- Fittings all in stainless steel
- 8 x stainless steel deck cleats
- Pulpit and cockpit rails
- Stainless steel fendering with rubber insert
- Curved safety glass windscreen
- Stainless steel bow roller with anchor stop
- Stainless steel bow plate
- Anchor and 90m of 9.5mm chain (galvanised)
- Electric winch and capstan with deck and Interior helm controls
- Chain locker/fender stowage
- Fender tie bar under anchor locker lid
- Fore deck coach-roof storage lockers
- Fuel fillers port and starboard
- Fresh-water filler
- IMCONavigation lights
- 2 x Pantograph windscreen wipers and washers
- Foredeck speaker system - Fusion 4" Stereo waterproof speakers with fixed waterproof remote control
- Teak Side Decks
- Underwater lights - Aqualuma LED wide angle x 4
- Garage for tender
- Ensign staff and socket

Aft Cockpit

- Self draining
- Teak-laid Cockpit Decking
- Stern safety door
- Cockpit speakers with CD remote
- Upgraded Aft Cockpit speaker system; Additional pair of Fusion 7" Marine waterproof speakers totaling 4 with a 5 channel amplifier with 10" Fusion subwoofer
- Wetbar sink with hot and cold water, cool box, ice maker, locker and griddle
- Upholstered seating around cockpit table
- Large stern sunbather
- Lockers beneath seating
- Overhead cockpit lights 24v
- Low-level courtesy lights 24v
- Engine room access hatch
- Boat hook

Helm

- Twin helm seats
- Navigation console with chart area
- Hydraulic power steering
- Leather rimmed steering wheel
- Analogue engine instrumentation
- Chart plotter with GPS

- Radar open scanner
- Autopilot
- Speed and depth instrumentation
- VHF radio with DSC
- Rudder indicator
- Water tank gauge
- Fuel tank gauge
- Trim tab controls
- Single lever electronic engine controls
- Magnetic compass
- Waterproof plug and socket 12v
- Horn
- Windscreen wipers and washers
- Glass holders
- Hand-held fire extinguisher

Accommodations

American Black Walnut Gloss Finish Interior Wood Finish

Deck saloon

- Separate dining area with table
- Stowage beneath seats
- 55" Television on fall and rise system
- Harmon Kardon Bluray/DVD/CD cinema sound system
- Airport Express
- Drinks cupboard
- Overhead halogen lighting LED 24v
- Stainless steel sliding door to cockpit
- Main control panel (AC/DC)
- Generator controls
- Air Conditioning
- 3 x Double AC sockets
- Wood flooring
- Scatter cushion

Forward stateroom

- Double berth
- Storage beneath
- Drawer in base-end
- 2 x reading lights 24v
- Outboard shelving and cupboards
- Overhead bedside cupboards
- Hanging wardrobes with mirrored panel

- Overhead lights LED 24v
- 2 x opening portholes with mosquito screens
- Port-light blinds
- Deck hatch with blind and mosquito screen
- Sky-light
- 2 x Double AC sockets
- Door to shower room
- Fitted carpet
- Air Conditioning
- 32" television
- Blu-ray/DVD/CD player with speakers

Forward en suite shower room

- Washbasin
- Taps and accessories
- Hot and cold water supply
- Separate shower compartment
- Electric toilet
- Extractor fan
- Mirrored vanity unit
- Shelved cupboard
- Toothbrush and glass holder
- Soap dispenser
- Towel ring and towels
- Overhead lights
- Opening porthole with mosquito screen and blind
- Razor socket 240/110v

Starboard guest cabin

- 2 x single berths
- Under berth storage
- 2 x reading lights 24v
- Hanging wardrobe
- Overhead lighting LED 24v
- Opening porthole with mosquito screen and blinds
- Double AC socket
- Fitted carpet
- Air Conditioning
- 22" television
- Blu-ray/DVD/CD player with speakers

Starboard en suite shower room

- Washbasin
- Taps and accessories

- Hot and cold water supply
- Separate shower compartment
- Electric toilet
- Extractor fan
- Mirrored vanity unit
- Shelved cupboard
- Toothbrush and glass holder
- Soap dispenser
- Towel ring and towels
- Overhead lights LED
- Opening porthole with mosquito screen and blind
- Razor socket 240/110v

Master aft stateroom

- Double berth
- Cupboard and drawer stowage
- 2 x reading lights 24v
- Bedside drawers
- Walk-in wardrobe
- Overhead lights LED 24v
- 2 x large windows with opening portholes, mosquito screens and blinds
- Two Double AC sockets
- Door to shower room
- Fitted carpet
- Settee
- Air Conditioning
- 32" television
- Blu-ray/DVD/CD player with speakers

Aft en suite shower room

- Washbasin
- Taps and accessories
- Hot and cold water supply
- Separate shower compartment
- Electric toilet
- Extractor fan
- Mirrored vanity unit
- Shelved cupboard
- Toothbrush and glass holder
- Soap dispenser
- Towel ring and towels
- Overhead lights LED
- Opening porthole with mosquito screen and blind
- Razor socket 240/110vs

Galley

- Sink and drainer
- 3 ring ceramic touch control hob and extractor fan
- Electric refrigerator
- Electric freezer
- Microwave convection oven
- Hot and cold water
- Rubbish bin
- Cupboard and drawer storage
- 8 place crockery set
- 8 place cutlery set
- 2 x Double AC sockets
- Hand-held fire extinguisher
- First aid kit
- Wood flooring

Engines & Mechanical

- Soundproofing throughout
- Fuel filters/water separators to engines
- Fuel filters/water separators to generators
- Automatic bilge and flood pumps with high level alarms
- Generator exhaust silencers and water separators
- Engine exhaust dry risers and water injection
- Strainers to all raw water inlets
- Power steering - hydraulic control steering
- Garage door and trim tabs hydraulic control unit
- Lifting platform hydraulic control unit
- Air intakes fitted with emergency shut down flaps (automatically operated)
- Air extraction fans (AC) fitted with butterfly shutdown dampers
- Exhaust gas temperature sensor
- Fluorescent lights (AC)
- Engine room fire extinguishing system (FM200)
- 1 x AC 220V Socket
- 1 x 24v Socket
- Portable CO2 fire extinguisher
- Inspection Lamp
- Stern Thruster - Sleipner SE170/250TC-24V - 10.7hp

Electrical

- On an 23kW 60Hz Generator (upgrade)
- AC dockside connection
- Galvanic isolator
- 24v and 12v DC electrical system with full circuit breaker protection
- 8 x engine batteries 24v circuit

- 4 x domestic batteries 24v circuit
- 2 x generator batteries 12v circuit
- Alternator split charging system
- Remote battery switches controlled from locker in cockpit
- Battery charger for 24v circuits
- Battery charger for 12v circuits
- Water heater
- AC electrical sockets through out the boat
- 24v hand light and cable

Disclaimer

The company offers the details of this vessel in good faith but cannot guarantee or warrant the accuracy of this information nor warrant the condition of the vessel. A buyer should instruct his agents, or his surveyors, to investigate such details as the buyer desires validated. This vessel is offered subject to prior sale, price change or withdrawal without notice.



















