



Jane Marie

36' (10.97m) 2004 Sabre
Gibson Island Maryland United States



OVERVIEW

\$285,000

Manufacturer:	Sabre	Hull Material:	Fiberglass
Engines:	2 Yanmar	Cruise Speed:	Knots
Engine Model:	6LY	Max Speed:	Knots
Engine HP:	370	Cabins/Heads:	1 /
Beam:	12' 6"	Fuel Type:	Diesel
Max Draft:	3' 4"	Fuel:	300 G (1135.62 L)
Water:	100 G (378.54 L)		



William Cary Lukens cary@sailyard.com

4439955553

Data Sheet

Category: Flybridge
Subcategory: Trawlers
Condition: Used
Model Year: 2004
Beam: 12'6" (3.81m)
Max Draft: 3' 4" (1.02m)
LOA: 36' (10.97m)
Cabins: 1
Sleeps: 4
Convertibles: 1
Double Berths: 1

Knots
Knots
Fuel Type: Diesel
Hull Material: Fiberglass
Air Conditioning: Yes

Displacement: 20600 Fuel Tank: 300 gal
(1135.62 liters)
Fresh Water: 100 gal (378.54 liters)
Holding Tank: 30 gal (113.56 liters)
Imported: No
Builder: Sabre
Designer: Sabre
HIN/IMO: HWY460390404
In Stock: Yes

Engines/Generators

Engine 1

Yanmar
6LY
Inboard
370HP
275.91KW
Fuel: Diesel
Hours: 830
Year: 2004
Location: Port

Engine 2

Yanmar
6LY
Inboard
370HP
275.91KW
Fuel: Diesel
Hours: 830
Year: 2004



Summary/Description

Meticulously maintained at Gibson Island Boat Works a very well kept an elegant cruising yacht, of unquestionable down east main pedigree, well equipped, no apologies needed!

Overview

Based on the proven deep-vee hull of the Sabre 36 Express MKII, the Sabre 36 Sedan is offered in an Extended Fly Bridge version. This versatile approach allows use the boat in a variety of ways to suite their boating lifestyle.

This 36 Ext Fly Bridge Sedan is equipped with twin Yanmar 6LY 370 hp diesel engines. Cruise speed with these upgraded engines, 24 knots. Top end speed is 30 knots.

The interior of the 36 Ext. Fly Bridge Sedan is finished in hand crafted American Cherry. Her layout includes a private owners stateroom forward, a large head with circular acrylic shower enclosure, and a full galley. Above the engine room is a spacious and airy salon with a lower helm station and sliding door to the starboard side deck.

Wide side decks with a molded-in non-skid pattern provide a sense of security for crew moving about on deck. She is outfitted with the finest deck hardware: Large diameter handrails, stainless steel portlights, and highly polished hatches from Lewmar all add to her beauty and functionality. From the cockpit a gently sloped staircase leads to the spacious and comfortable fly bridge.

The Sabre Design Team recognized a need for an extended hard top. This unique option extends the existing fly bridge sedan's hard top to form a cover for the yacht's aft cockpit.

With this overhang, the cockpit becomes an extension of the yacht's salon, offering a comfortable space in which to relax while underway or at rest. Whether it is the sun or the rain you are trying to avoid, this option dramatically increases the versatility of the Sabre 36 Ext Fly Bridge.

A sliding acrylic hatch covers the stairs to the command bridge and can be drawn closed to keep the rain away from the cockpit. This opening in the hard top also provides convenient sight lines from the upper helm to the port aft corner of the transom, during docking maneuvers.



About Sabre Yachts

Sabre Yachts has been crafting sail and motor yachts in Southern Maine since 1970. Sabre offers three sailboat models and six Sabre powerboat models. Sabre yachts are known and respected worldwide. In 1989 Sabre created their range of motoryachts which now includes models from 34 to 47 feet. Sabre motoryachts are built on deep-vee hulls which are capable, with optional power, of cruise speeds of 25 knots and top end speeds of 30 knots.

Boatbuilding is a long standing tradition in Maine. The Sabre work force consists of men and women who take tremendous pride in their work and are sensitive to the marine tradition of the State - hence the company's motto, "Crafted in the Maine Tradition". Most Sabre Associates are capable of working in all the different phases of boatbuilding, and have a full understanding of the influence that their job has on the quality of the final product. Nearly one third of Sabre's associates have been with the company for over a decade, and many have celebrated their second decade with the company.

Main Salon

Sabre Yacht's quality and attention to detail is legendary. Aboard the Sabre 36 Sedan you will see many examples of the craftsmanship which has become a Sabre hallmark. Dovetailed drawer boxes, laminated wood fiddles on horizontal surfaces and beautiful woods chosen for their match and grain. In this spacious salon, surrounded by large windows, there is a sense of luxury. Beautifully finished wood working details, comfortable seating surfaces and most of all, a sense of comfort and well being that only time honored traditional craftsmanship can create.

The sense of space created by these opening windows is something which gives the impression that this boat is considerably larger than a 36 footer. Aft and to port is a comfortable L-shaped settee with a hi-lo table, adjustable to coffee table or dining table height. Opposite, to starboard, is the entertainment center.

To port and above the galley is a cabinet for glassware and bottle storage. The cabinet top can be used for laying out paper charts or as a serving table for meals or refreshments. Recessed overhead lighting and accent lighting is provided to make the salon just as comfortable and functional at night as during the day.

Sight lines from the lower helm are excellent, providing a comfortable steering station when the weather is too hot, too cold or too wet to be on the command bridge. Full controls and space are provided for all the yacht's systems and navigational electronics.

Raymarine chartplotter, radar, depth, and autopilot

Dual controls for transmission and throttle control of each engine

Full analog engine instrumentation

VHF radio

Stereo

Spotlight control

Windlass control

Hydraulic steering

Compass

Multiple electric auto/manual switch bilge pumps

Controls and instrumentation for Onan 6kw genset

Teak and Holly sole

Light colored Ultraleather upholstery in fantastic shape

Full shades for all side windows, textaline covers for front windows

Windshield wipers

Overhead hand holds

Engine room access with gas struts

Galley

Functional and comfortable galley enclosed on three sides and low in the boat for stability and comfort. Open overhead to the main salon, the galley also offers access to the cabinet top to easily transfer trays, etc. Bright and open feel in this secure galley, which also has its own stainless steel opening port.

Tundra fridge

Double SS sink

Electric stove top with easy clean acrylic top

Corian countertops

Panasonic Microwave

Coffeemaker

Ample storage and counterspace, AND additional storage under three steps to main salon

Master Stateroom

This is a very comfortable and functional accommodation for the cruising couple! The stateroom of this Sabre 36 sedan comes with the preferred centerline berth, which offers very comfortable and spacious sleeping accommodations as well as storage beneath. Hull sides are lined with ash hull ceilings. This wood treatment is not only beautiful, but also has a

function. Hull ceilings are resined out on their exterior side and set off from the hull side with spacers keeping the cool and damp of outside air away from the cabin's interior.

Along the shelves above the berth are storage lockers with tambour sliders. A tall cedar-lined hanging locker with louvered door is located aft and to port. As mentioned, the berth itself also houses a set of large drawers. Overhead is an opening hatch with screen to allow the breeze to enter on warm summer nights. On the side of the house are two stainless steel opening ports for additional ventilation when required.

Head Compartment

The head, molded in bright white gelcoat, has a modern, contemporary feel. A Corian counter tops the vanity and spacious storage can be found outboard of the sink. The fiberglass pan construction makes cleaning an easy task. Aft of the head is the separate stall shower, with revolving shower door allowing the largest possible space. A convenient seat is also provided. Outboard of the shower stall is a wet locker for hanging wet clothing or foul weather gear.

This double entry head can be accessed from both the master stateroom or from the passageway, allowing privacy for you and your guests.

Command/Flybridge

The Fly Bridge adds another realm of versatility to the use of the boat, for the Captain, Mate, and all the guests.

Sight lines are excellent and seating comfort has been maximized with fully adjustable helm seats for captain and mate. The helm has a comfortable foot well and ample spaces for electronics; and aft of the seating area, a hinged radar mast provides space to mount any antenna equipment needed. Since it's hinged, it can be lowered (as can the bimini) for extra room when bridge clearance is needed.

Everything has been thought out for easy and safe operation of the yacht. Complete controls for the engines, steering, and navigational equipment is at the Captain's fingertips. Forward of the Mate's chair is a space for a chart kit with clear cover, and aft of the helm seat a double seat for guests or family. Upper helm offers Garmin multidisplay, and Raymarine depth and autopilot. Blue canvas covers the helm when not in use, and matching bimini provides shade to the whole upper seating area.

The Extended Fly Bridge is an extension of the command bridge sole covering the open areas of the cockpit. This extension of the main salon is a comfortable, shady place to relax. A sliding acrylic cover encloses the command bridge steps when not in use.

Additional info

Since 2004 the boat has been lovingly cared for by these owners; hence, complete maintenance information is available.

Great access to engine space including center alley outboard space of each engine.



Berths are roomy (6'8")

Freshly varnished and finely joined cap rail

High bulwarks offer safety on deck

Substantial stainless steel rails, cleats, hardware

Electric windlass with helm controls and foot pedals

Plow anchor, chain, and rode, with accessible deck storage

Anchor washdown pump and attachment port

Swim platform, swim ladder, and opening, secure, transom door

Fresh water cockpit shower

Water heater

House and start batteries

Dripless shaft seals

Screens for ports and hatches

Cockpit sink and storage

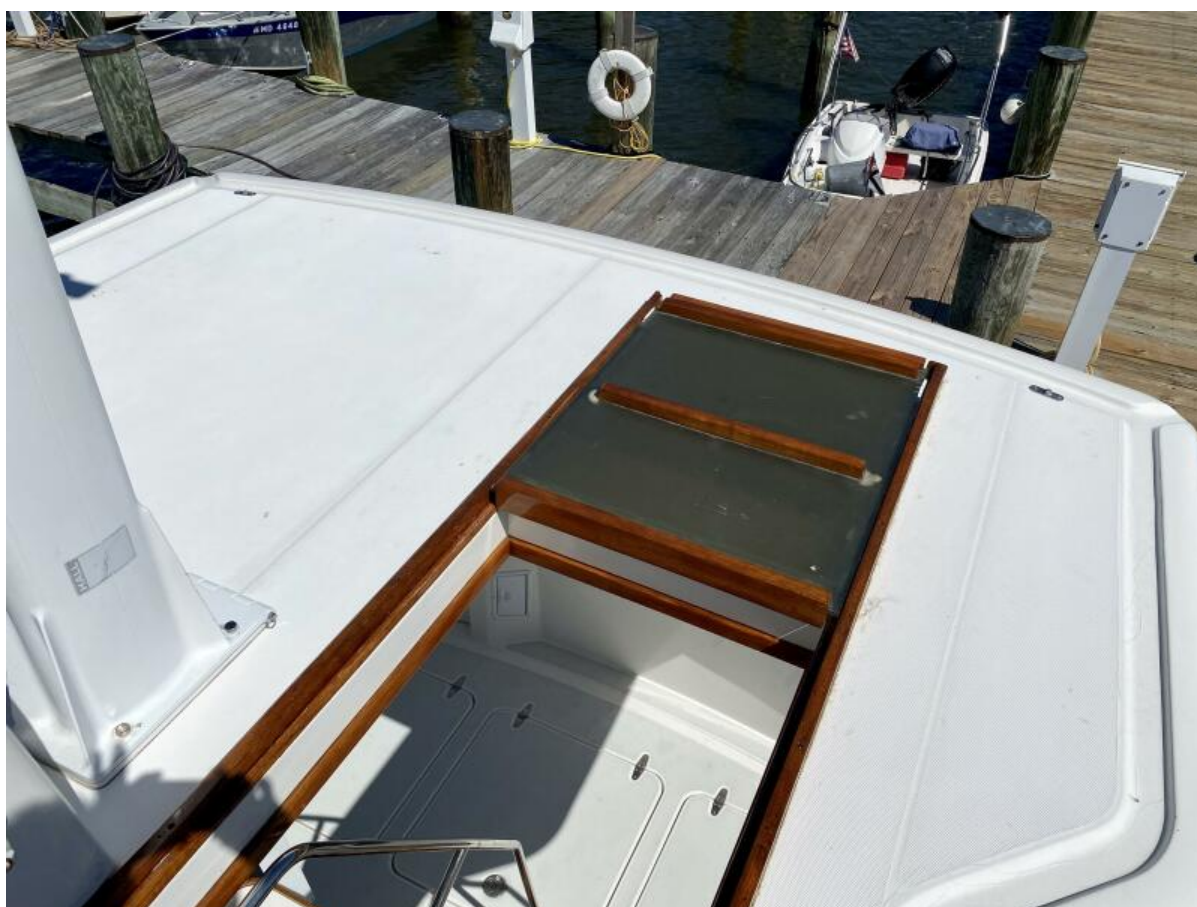














































































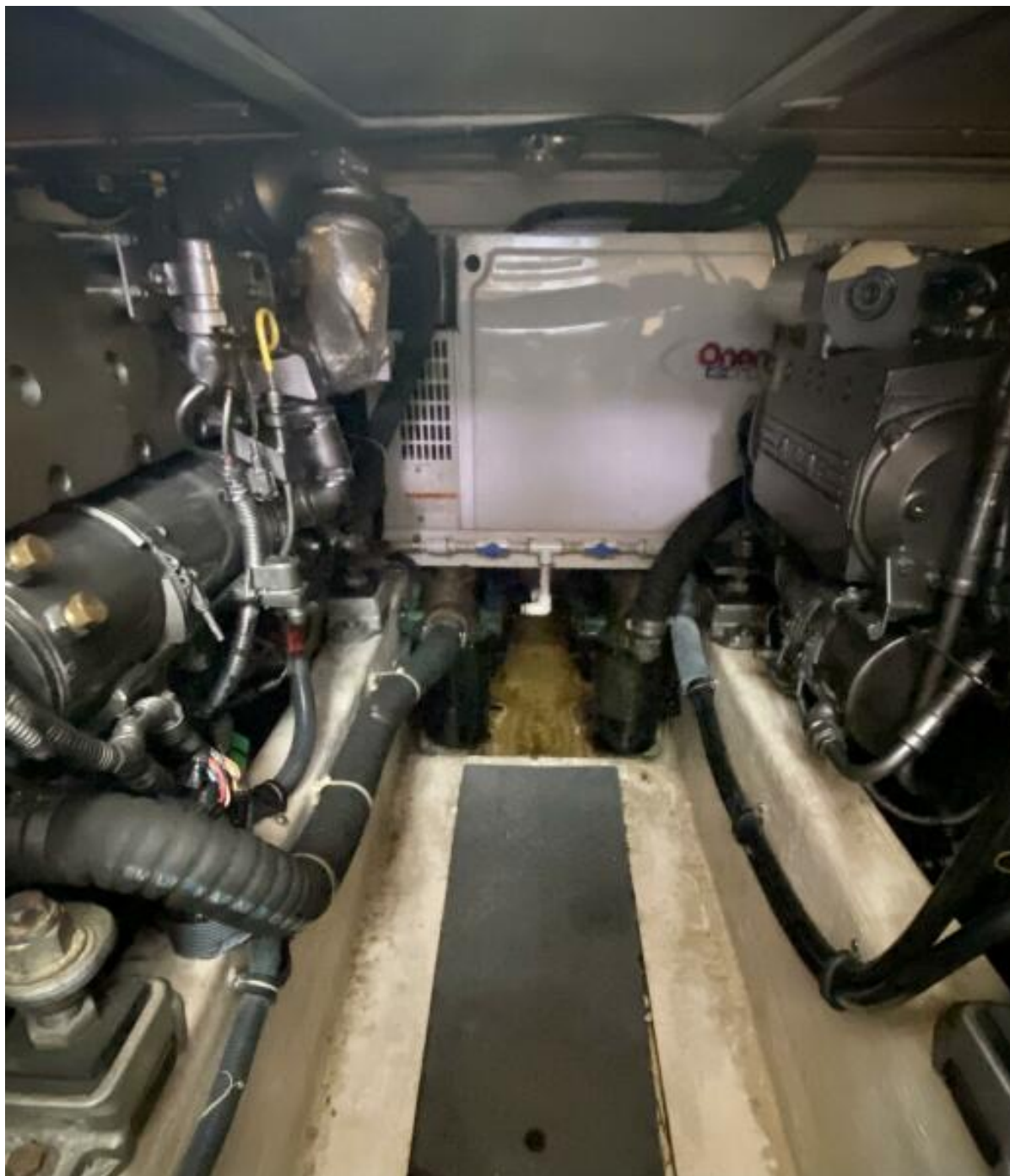




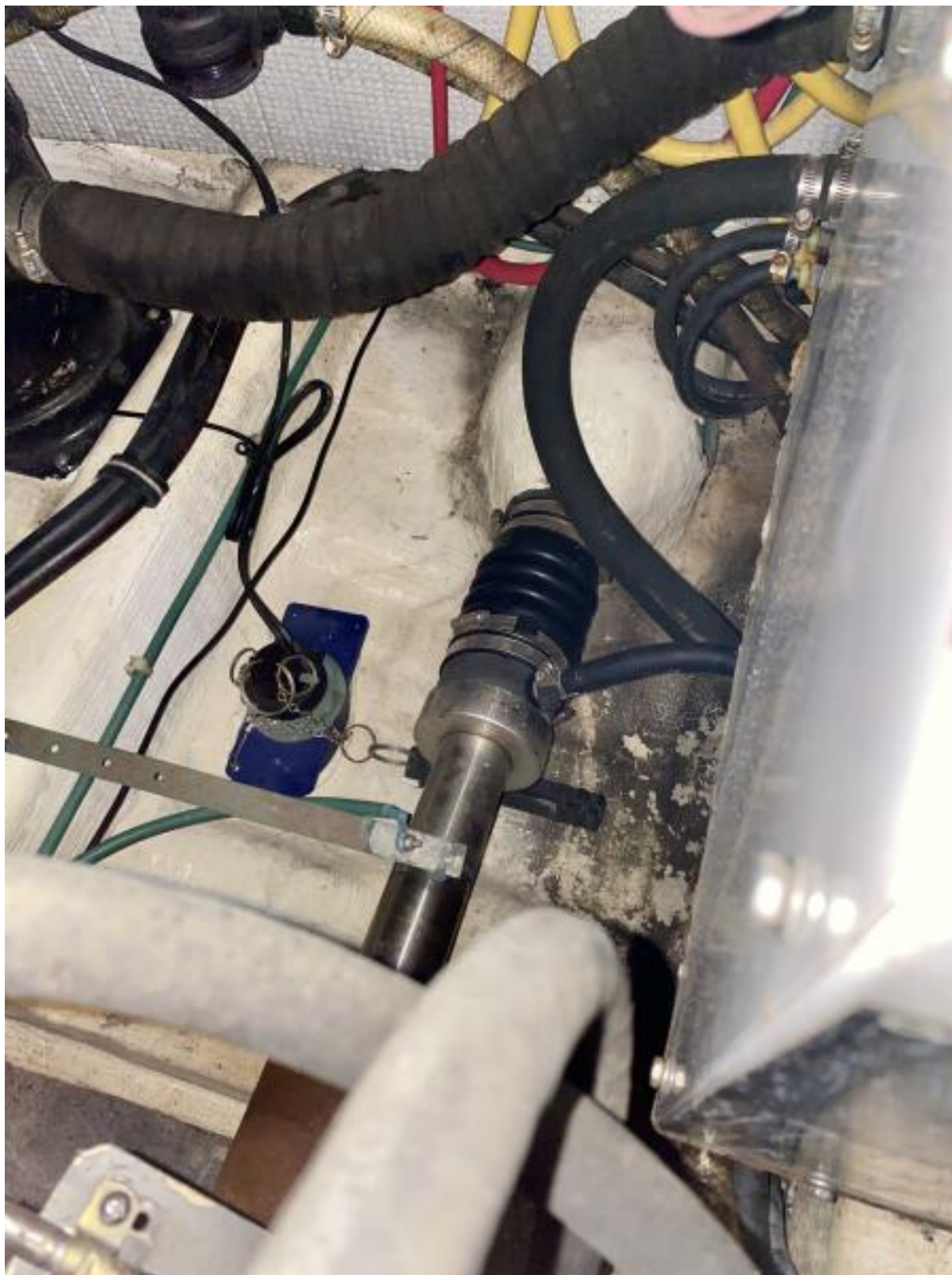




IMG_0641



IMG_0640



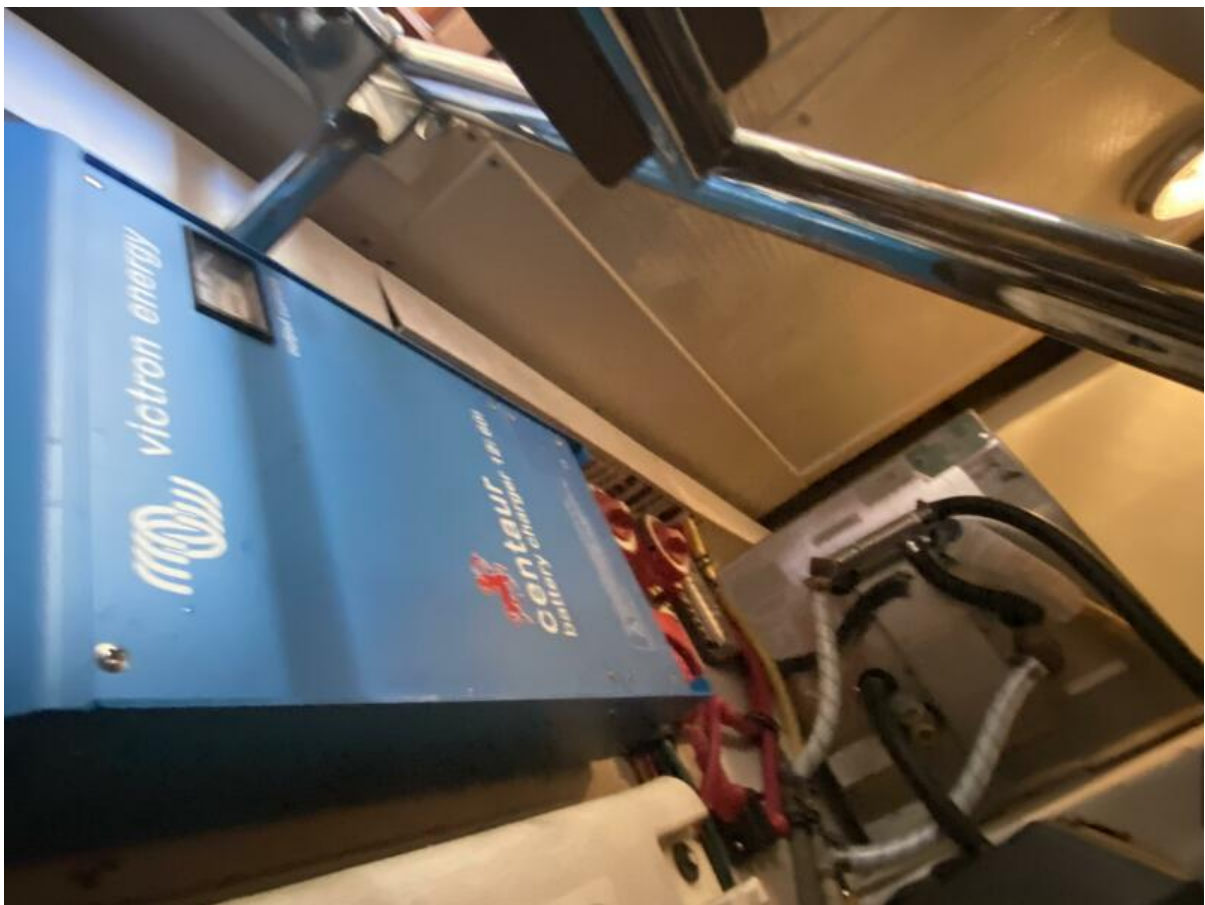
IMG_0639



IMG_0638



IMG_0637



IMG_0635



IMG_0634



IMG_0632



IMG_0633



IMG_0629



IMG_0628



IMG_0627



IMG_0624



IMG_0623



IMG_0622