



William Joy

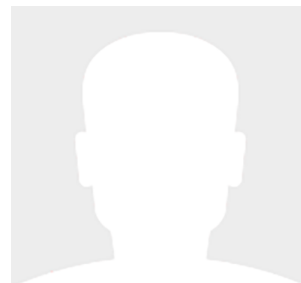
37' (11.28m) 2001 Nordic Tugs 37
Beaufort North Carolina United States



OVERVIEW

\$259,000

Manufacturer:	<i>Nordic Tugs</i>		
Engines:	1 Cummins	Hull Material:	Fiberglass
Engine Model:	6BTA 5.9	Cruise Speed:	9.2
Engine HP:	330	Max Speed:	
Beam:	12' 11"	Cabins/Heads:	1 / 1
Max Draft:	4' 0"	Fuel Type:	Diesel
Water:	150 G (567.81 L)	Fuel:	350 G (1324.89 L)



Data Sheet

Category: Aft Cabin
Condition: Used
Model Year: 2001
Beam: 12'11" (3.94m)
Max Draft: 4' (1.22m)
LOA: 37' (11.28m)
Cabins: 1
Heads: 1

Cruise Speed: 9.2 Fuel Type: Diesel
Hull Material: Fiberglass

Dry Weight: 22000 lbs
Fuel Tank: 350 gal (1324.89 liters)
Fresh Water: 150 gal (567.81 liters)
Holding Tank: 40 gal (151.42 liters)
HIN/IMO: NTK37045B101
Stock #: B93105

Engines/Generators

Engine 1

Cummins
6BTA 5.9
Inboard
330HP
246.08KW
Fuel: Diesel
Hours: 2978
Year: 2001

Summary/Description

Very well maintained, 18 years fresh water boat on Lake Michigan.

Very well maintained, 18 years fresh water boat on Lake Michigan.

With its distinctive, rugged profile and a rich history of dependable performance, this Nordic Tug is the epitome of timeless maritime craftsmanship. Well-maintained and lovingly cared for, it stands ready to embark on new journeys with its next owner.

In 2022 the hull bottom was soda blasted and coated. This was done to remove years of soft paint buildup and ensure bottom integrity. There were no issues with the underwater gel coat due to vinlyester resin used in construction. Sonihull anti foul system (2021) Yearly haulouts and regular mechanical maintenance have been performed. Complete maintenance records available from the initial build.

Galley

- 2 burner electric stove top (new in 2024)
- Sharp Carousel microwave/ convection oven
- Nova Kool refrigerator/freezer
- Deep stainless steel sink- Storage cabinets and drawers
- Opening side window with screen and shade
- New galley faucet 2023 Head
- Raritan Eligance electric fresh water flush head (new 2022)
- Sealand Tankwatch
- 4 holding tank monitor
- Stall shower with glass folding door
- Screened 8" opening ports in head and shower
- Two storage cabinets
- Full-length mirror on door

Pilothouse

- Large chart table and chart drawer
- Six other storage compartments
- Sliding Diamond/Seaglaize doors
- Phantom retracting screen doors
- 16" Bomar screened opening hatch
- Seating for 4 on comfortable helm and companion seats
- Weems and Plath tide clock and barometer
- Red illumination for nighttime operation
- Dual speed windshield wipers with washers
- Heatercraft forced air heating and defrosting system
- Exterior sun screening for windows and doors

Electronics

- Raymarine Axiom Pro 12 S multi-function w/ Navionics+ charts (new 2019)-
- Raymarine Quantum 2 Q24D radar (new 2019)-
- Raymarine AIS700 Class B transceiver (new 2019)-
- Raymarine EV-200 autopilot (new 2019)-
- Raymarine wind/speed/depth display new transducer May 2023-
- Standard Horizon VHF (new 2019)-
- Ritchie compass- GoLight remote control searchlight (new July 2023)-
- radio/ tape player with Bose speakers in main salon

Electrical

- Northern Lights 8kW generator with approximately 972 hours and sound shield
- Group 24 AGM dedicated battery for generator (2019)
- Two 4D AGM batteries for diesel starting and bow thruster/windlass (2019)
- FourLifeLine AGM 6v golf cart deep cycle batteries (new 2022)
- Xantrex battery monitor- Statpower Truecharge 40amp smart battery charger
- Two 30 AMP shore power circuits- Outback power systems 2500 watt inverter
- Solar panels (2) 135 watt
- 12v plug outlets at helm and chart table
- Two shore power cord w/ smart plugs
- One standard 50' shore power cord
- one 50amp split
- Inside high water bilge alarm, 3 bilge pumps.

Engine

- Cummins 330hp turbocharged diesel 6BTA 5.9-M3 (2978 Hrs in July 2023)
- Twin Disk 2.45:1 transmission
- Morse MT-3 single lever throttle/shift control
- Sidepower 7 Hp bow thruster- new improved prop May 2023
- Ocean Marine reverse cycle heating/air conditioning system (2)
- Racor primary fuel filters
- Reverso oil transfer pump
- Groco raw water strainers (3)
- Teleflex Seastar hydraulic steering
- Seaward 11 gallon water heater (new 2019)
- Rule 2000 gph auto/manual bilge pumps (3)
- 28 x 24 4-Blade propeller (reconditioned 2021)
- Block heater on main engine
- Complete engine and systems manuals

Deck

- Rocna 20# anchor w/ 200' 5/16 HT chain (new chain 2021)

- additional 100 feet of chain with 100ft rode
- Delta fast-set 20# secondary anchor
- Fortress FX-16 anchor with rode in lazzerette
- Lofrans Tigres windlass- Stainless steel bollard
- Large Deck locker- Integral fender storage
- Hot/Cold freshwater shower aft cockpit
- Sea Water wash down
- fore & aft locations
- Large lazzerette storage area
- Nick Jackson 1000 lb. crane (new 2021) with deck chocks
- Large fenders (8)
- Dock lines (new 2021)
- Upper deck bimini with cover (new 2019)
- Rail mounted propane BBQ on aft cockpit rail

Disclaimer

The company offers the details of this vessel in good faith but cannot guarantee or warrant the accuracy of this information nor warrant the condition of the vessel. A buyer should instruct his agents, or his surveyors, to investigate such details as the buyer desires validated. This vessel is offered subject to prior sale, price change or withdrawal without notice.



