



27' Scout 277 LXF

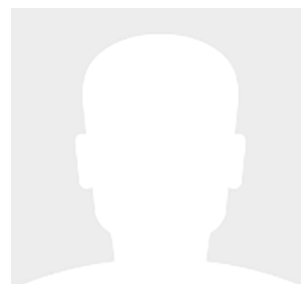
27' (8.23m) 2021 Scout 277 LXF
Charleston South Carolina United States



OVERVIEW

Manufacturer:	Scout	Hull Material:	Fiberglass
Engines:	2 Mercury	Cruise Speed:	31
Engine Model:	200XL	Max Speed:	52
Engine HP:	200	Cabins/Heads:	/ 1
Beam:	9' 0"	Fuel Type:	Gas/Petrol
Max Draft:	1' 7"	Fuel:	
Water:			

\$199,900





Data Sheet

Category: Center Consoles
Condition: Used
Model Year: 2021
Beam: 9' (2.74m)
Max Draft: 1' 7" (0.48m)
LOA: 27' (8.23m)
Heads: 1

Maximum Speed: 52 Cruise Speed: 31 HIN/IMO: N/A
Fuel Type: Gas/Petrol
Hull Material: Fiberglass

Engines/Generators

Engine 1

Mercury
200XL
Outboard
200HP
149.14KW
Fuel: Gas/Petrol
Hours: 200

Engine 2

Mercury
200XL
Outboard
200HP
149.14KW
Fuel: Gas/Petrol
Hours: 200



Summary/Description

This Scout 277 LXF was built with many optional upgrades and has been meticulously maintained. She has low hour Mercury 200XL's. This Scout has ample storage, seating, and an upgraded cushion package. She makes the perfect boat for taking friends and family to the sandbar or to take fishing.

This Scout 277 LXF was built with many optional upgrades and has been meticulously maintained. She has low hour Mercury 200XL's. This Scout has ample storage, seating, and an upgraded cushion package. She makes the perfect boat for taking friends and family to the sandbar or to take fishing.

Highlights

- Low Hour Mercury's with warranty thru 2026
- Lift Kept
- Great Condition
- JL Audio

Deck and Hull

- Midnight Blue Hull Sides
- Port side dive door
- Aft and Bow dive ladders
- Windlass
- Forward Seating with removable backrests
- Integrated aft seating
- Livewell with Lighting
- Fishbox
- Fresh and Raw water washdowns
- Large bilge access
- Upgraded Grigio Cushion Package
- Bolster pads throughout
- Lenco Trim tabs with LED indicator switch
- Rod storage
- LED rope lighting
- Garmin B175 Transducer
- (2) sets of Phender Pro fendering systems
- Freshwater Auto Engine flush system

Helm and Console

- Electronics bezel and Glovebox



- Edson Steering Wheel
- Powdered coated TTop with Frameless Windshield
- Overhead LED Lighting
- Deluxe Leaning post with companion seats
- (2) Flush mount Garmin 8610's
- (4) JL Audio 7.7" Speakers
- 10" JL Audio Sub
- JL Audio amp
- LED Battery voltage display
- Compass
- Razor LED light bar
- Garmin VHF
- Private Head
- Battery storage with console shelf

Mechanical Disclaimer

Engine and generator hours are as of the date of the original listing and are a representation of what the listing broker is told by the owner and/or actual reading of the engine hour meters. The broker cannot guarantee the true hours. It is the responsibility of the purchaser and/or his agent to verify engine hours, warranties implied or otherwise and major overhauls as well as all other representations noted on the listing brochure.

Disclaimer

The company offers the details of this vessel in good faith but cannot guarantee or warrant the accuracy of this information nor warrant the condition of the vessel. A buyer should instruct his agents, or his surveyors, to investigate such details as the buyer desires validated. This vessel is offered subject to prior sale, price change or withdrawal without notice.



Scout 277 LXF - Profile 2021 Scout 277 LXF



Scout 277 LXF - Profile 2021 Scout 277 LXF



Scout 277 LXF - Profile 2021 Scout 277 LXF



Scout 277 LXF - Profile 2021 Scout 277 LXF



Scout 277 LXF - Profile 2021 Scout 277 LXF



Scout 277 LXF - Helm 2021 Scout 277 LXF



Scout 277 LXF - Helm 2021 Scout 277 LXF



Scout 277 LXF - Engines 2021 Scout 277 LXF



Scout 277 LXF - Dive Door 2021 Scout 277 LXF



Scout 277 LXF - Forward Seating 2021 Scout 277 LXF



Scout 277 LXF - Center Console 2021 Scout 277 LXF



Scout 277 LXF - Bow 2021 Scout 277 LXF



Scout 277 LXF - Aft 2021 Scout 277 LXF



Scout 277 LXF - Profile 2021 Scout 277 LXF



Scout 277 LXF - Profile 2021 Scout 277 LXF



Scout 277 LXF - Profile 2021 Scout 277 LXF



Scout 277 LXF - Profile 2021 Scout 277 LXF