



Ridgeback

37' (11.28m) 1987 Bertram 37 Convertible
Pensacola Florida United States



OVERVIEW

Manufacturer:	Bertram		
Engines:	2 Yanmar	Hull Material:	Fiberglass
Engine Model:	6LY2A-STP	Cruise Speed:	
Engine HP:	440	Max Speed:	
Beam:	13' 3"	Cabins/Heads:	2 / 1
Max Draft:	"	Fuel Type:	Diesel
Water:	100 G (378.54 L)	Fuel:	465 G (1760.22 L)

\$109,999



Justin Williams jwilliams@galatiyachts.com

850-291-0400

Data Sheet

Category: Sport Fishing
Condition: Used
Model Year: 1987
Beam: 13'3" (4.04m)
Min Draft: 3' 9" (1.14m)
LOA: 37' 9" (11.51m)
Cabins: 2
Sleeps: 6
Heads: 1

Fuel Type: Diesel
Hull Material: Fiberglass

Fuel Tank: 465 gal (1760.22 liters)
Fresh Water: 100 gal (378.54 liters)
HIN/IMO: BERV1015L687
Stock #: BR9522-JTW

Engines/Generators

Engine 1

Yanmar
6LY2A-STP
Inboard
440HP
328.11KW
Fuel: Diesel
Hours: 3200
Year: 2010
Serial #: M56699
Location: Port

Engine 2

Yanmar
6LY2A-STP
Inboard
440HP
328.11KW
Fuel: Diesel
Hours: 3200
Year: 2010
Serial #: M50279
Location: Starboard

Summary/Description

For Sale

1987 37 Bertram Convertible "Ridgeback". In the 80's Bertram Yachts led the sportfishing industry with many innovative designs paving the way for the modern sportfish convertible. The excellent seakeeping ability of a Bertram is well-known around the globe by all serious sport fishermen. "RIDGEBACK" is a proven tournament winner with a long-standing pedigree along the Gulf Coast. Originally owned by Don Phillips, a Pensacola Big Game fishing club member and known as the "Heather D" this 37 Convertible brought many game winners to the scales over the years. The tradition continued when she became "RIDGEBACK" catching game winners in some of the Gulf Coast's most prestigious tournaments such as the Emerald Coast Billfish Classic. "RIDGEBACK" was repowered during her "Heather D" days with Yanmar In-line 6-Cylinder 6LY2A-STP 440 hp main engines and upgraded with a MAS Power 8kW generator. Equipped to fish the most remote locations in the Gulf of Mexico "RIDGEBACK" is sure to help you find a game winner on your next fishing adventure.

Notable Options, Electronics and Recent Upgrades

- Repowered with Yamar 6LY2A-STP In-Line 6 Cylinder 440hp Main Engines, with approximately 3,200 hours
- MAS Power 8kW Generator with 4,500 original hours
- New LED underwater lights
- New salon subfloor with sound and thermal barrier
- Custom stairs built for engine room entry
- Raymarine Hybrid Touch 12" Screen Multi-Function Display, Chartplotter, Fishfinder, Radar
- Raymarine 24nm Ray Dome Closed Array Radar
- New Carpet in Salon
- New Custom Corian countertops with dripless edge
- New 12v Head with built in macerator
- New Corian vanity countertop and sink in Head
- 2020 New foredeck and nonskid
- 2019 Cockpit refit and repaint.
- 2020 New digital charging system and charging system wiring installed
- Fuel polished annually
- 2018 Genset deck refitted and repainted under cockpit, New sea strainer bracket built and installed
- 2022 wheels balanced at Intercoastal Propeller digitally balanced

General

- Air conditioning, reverse cycle
- Air horn, 12V comp
- Alarm System, fire, bilge, oil pressure and engine temp, gear oil temp and exhaust cooling
- Anchor 22 lb
- Anchor chocks and deck pipe to locker
- Anchor line, nylon, 3/4" x 200'
- Bottom paint, black, anti-fouling
- Bow rail, aluminum with burgee staff and burgee
- Chine, feature and FB stripes, black with silver accent stripes
- Chocks, stern
- Cleats (2) foredeck, (2) stern, and (4) springline

- Combinations bow chock and navigation light
- Dock lines (4), nylon, (2) ½" x 25', (2) 1/2" x 40'
- Ensign, pole and socket
- Fire extinguishers, (3) portable
- For bell
- Generator 8kW diesel
- Life Jackets (6)
- Navigation lights, international
- Ring buoy
- Thermal and acoustical insulation
- Windows, tinted safety glass

Mechanical

- Ball sea cocks on all thru-hull fittings
- Bilge pumps (4), automatic
- Dual Halon fire extinguishing system (1) manual, (1) automatic / manual
- Dual lever engine controls
- Engine compartment blower (3)
- Flush-mounted struts and rudder ports
- Fresh water cooling, main engines and generator diesel
- Fuel shut-off valves
- Hot water heater, 120V AC, 20 gallons
- Hydraulic steering
- Manganese bronze underwater hardware
- Mufflers, fiberglass
- Raw water sea strainers
- Stainless steel propeller shafts
- Transom zincs
- Trim tabs, flush mount, electro-hydraulic
- Vibration mounts, all engines
- Water inlet, dockside supply
- Water pressure system, electric

Electrical

- Batteries, (4) with paralleling device
- 120V AC 50 amp, shore service inlet and 50' shore cord, Port and Starboard
- Converter, automatic, 40 amp
- Copper ground screen
- Engine room DC lighting
- Electrical bonding system
- Electronic power supply, flybridge 12V, 60amp, 10 circuit

Interior

- New Carpeting throughout
- Foam-backed vinyl-covered bulkheads with oak trim
- Micro blinds

Deckhouse

- AC and DC lighting, AC outlets (2)
- Aft bulkhead with sliding door
- Cocktail table with benches
- Convertible lounge, L-shaped
- Electrical distribution panel
- Headliner, foam-backed suede
- Rod storage in overhead
- Screens on slide windows
- Stereo, AM/FM/ cassette with speakers
- Television set

Galley

- Cooktop, 2 burners
- AC outlet (1), GFCI
- Dish locker
- Freezer, AC, under counter
- Single-lever hot and cold faucet
- Stainless steel sink with cutting board cover

Guest Stateroom

- Berths, upper and lower, with coverlets and shams
- DC lighting
- Entrance from companionway with sliding door
- Hanging locker, cedar lined
- Overhead suede

Head

- China sink with single-lever faucet
- Circulating fan
- DC lighting, AC outlet, GFCI
- Shower stall with folding door and seat. Automatic sump pump
- Toilet, Galley Maid
- Vanity with locker storage under sink and mirrored cabinet

Master Stateroom

- DC lighting, AC outlet
- Double berth with coverlets and shams
- Drawer storage under berth
- Hanging locker, cedar lined
- Padded suede hull sides with shelves
- Rope locker
- Stereo with speakers
- Television
- Vanity with mirror
- Ventilating hatch and skylight, with screen

Cockpit

- Coaming padding
- Cockpit boarding lights, DC
- Cockpit sole, fiberglass
- Cockpit step, port, and starboard mount
- Overhead lighting, DC
- Reinforcement for fighting chair
- Scuppers thru hull side
- Stowage lockers port and starboard with hinged doors
- Teak step pads, covering board
- Transom door and gate

Flybridge

- Compass, 5"
- Electronics and or storage lockers (2)
- Full instrument console with weather-protected gauges and switches
- Helm and companion seats
- Hinged Plexiglas cover on chart flat
- Padded coaming
- Safety rail and ladder
- Seating for four
- Stereo speakers with volume control
- Tinted Plexiglas Spray shield

Exclusions

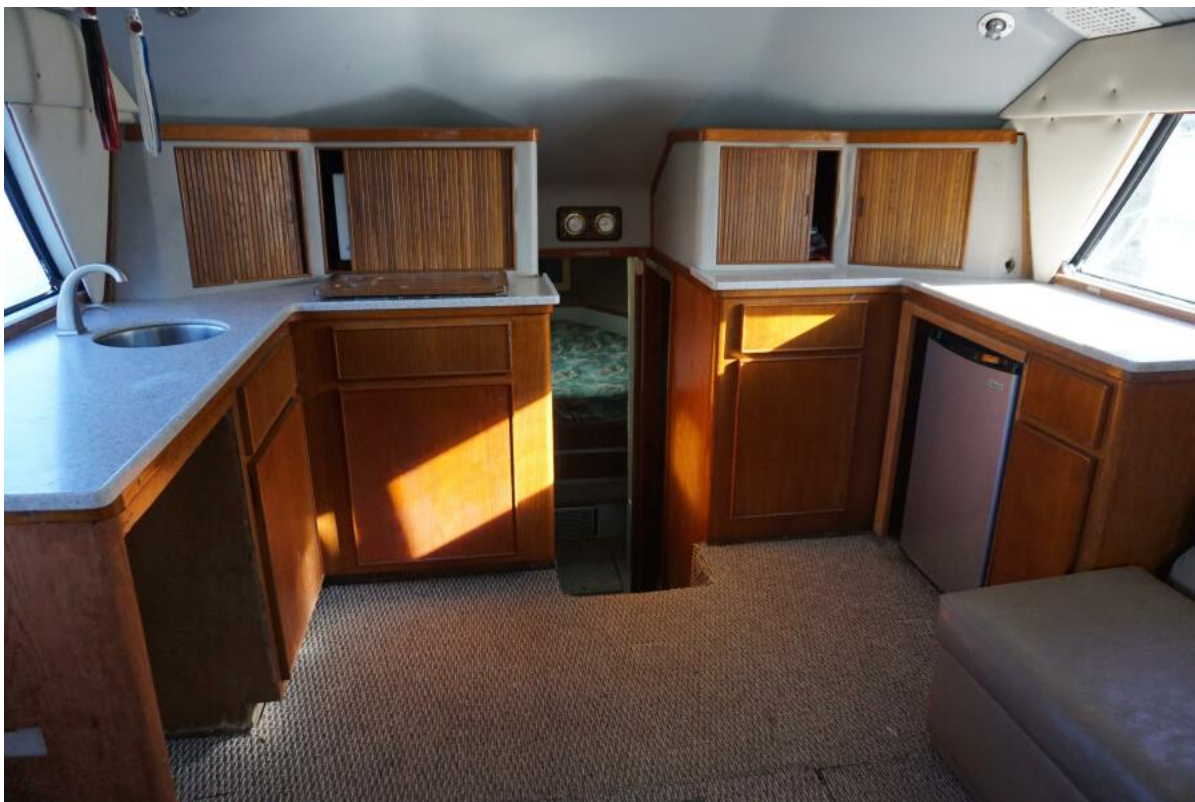
Owner's Personal Items and Effects

Broker's Remarks

"RIDGEBACK" is an excellent example of the evolution of the early sport fisherman. In her golden years, she would be an excellent platform for a fishing charter boat operation. If you are looking for an affordable and reliable boat to get out on the water and make a living fishing, then look no further. Give me a call to discuss the details of "RIDGEBACK".



1987 37 Bertram 37 Convertible RIDGEBACK Profile (12)



1987 37 Bertram 37 Convertible RIDGEBACK Main Salon (5)



1987 37 Bertram 37 Convertible RIDGEBACK Helm (2)



1987 37 Bertram 37 Convertible RIDGEBACK Cockpit (2)



1987 37 Bertram 37 Convertible RIDGEBACK Tower



1987 37 Bertram 37 Convertible RIDGEBACK Cockpit (2)