



# Into the Mystic

41' (12.50m) 2004 Meridian Sedan Bridge  
Englewood Florida United States



## OVERVIEW

**\$275,000**

Manufacturer:	Meridian		
Engines:	2 Cummins	Hull Material:	Fiberglass
Engine Model:	6BTA 5.9L	Cruise Speed:	18 Knots
Engine HP:	370	Max Speed:	22 Knots
Beam:	14' 2"	Cabins/Heads:	2 / 2
Max Draft:	3' 9"	Fuel Type:	Diesel
Water:	150 G (567.81 L)	Fuel:	400 G (1514.16 L)



## Data Sheet

Category: Motor Yachts  
Subcategory: Flybridge  
Condition: Used  
Model Year: 2004  
Beam: 14'2" (4.32m)  
Max Draft: 3' 9" (1.14m)  
LOA: 41' (12.50m)  
Cabins: 2  
Heads: 2

Maximum Speed: 22 Knots  
Cruise Speed: 18 Knots  
Fuel Type: Diesel  
Hull Material: Fiberglass  
Hull Shape: Modified Vee  
Hull Finish: Gelcoat  
Air Conditioning: Yes  
Bridge Clearance: 18'

Dry Weight: 25000 lbs  
Bow Thruster: Yes  
Stern Thruster: Yes  
Fuel Tank: 400 gal (1514.16 liters)  
Fresh Water: 150 gal (567.81 liters)  
Holding Tank: 55 gal (208.2 liters)  
Imported: No  
Exterior Color: White  
HIN/IMO: MDNJ5031I304

## Engines/Generators

### Engine 1

Cummins  
6BTA 5.9L  
Inboard  
370HP  
275.91KW  
Fuel: Diesel  
Hours: 2933  
Hours Date: 11-28-2023  
Location: Port

### Engine 2

Cummins  
6BTA 5.9L  
Inboard  
370HP  
275.91KW  
Fuel: Diesel  
Hours: 2930  
Hours Date: 11-28-2023  
Location: Starboard

### Generator 1

Onan  
11.50KW  
Hours: 6036  
Hours Date: 11/28/2023

## Summary/Description

Into the Mystic is a 2 stateroom, 2 head sedan bridge motor yacht with a spacious floorplan both in the interior & exterior spaces and has been maintained & upgraded nicely. Twin Cummins diesel main engines balance power & efficiency & an 11.5 KW generator delivers more than enough electrical power.

*Into the Mystic* is a 2 cabin, 2 head, galley up layout with minimal stairs and spacious outdoor areas that makes this yacht a great long term cruiser. The yacht is all set up for long term cruising with many upgrades such as hard-surface flooring, extra storage created from dead space, 2000W inverter/charger, LED lighting throughout, all safety equipment, canvas enclosures, extended swim platform, cockpit Sea Deck flooring, and flybridge woven flooring. *Into the Mystic* is currently traveling on the great loop in Florida and has spent most of its life in the Mississippi River and the Great Lakes. If you are looking for a "turnkey looping boat", this is it.

Recent upgrades and maintenance includes but is not limited to:

### 2023

- Inverter batteries upgraded to lithium
- New shades in galley and salon
- Sea Deck installed in cockpit and on flybridge steps
- 3 - Arlo wireless cameras monitoring bow, stern and engine room installed
- New windlass

### 2022

- Props tuned and painted with PropSpeed
- Bottom paint renewed
- Replaced main engine thermostats
- New battery charger
- Nebo Tracker installed
- New smoke detectors installed
- EPIRB installed
- 200' of 5/16" chain anchor rode installed
- New water heater

## Meridian 411 Walk Through

Boarding *Into the Mystic* is convenient and easy to do with only one step via the swim platform, into the spacious cockpit and leading you directly into the salon. Upon entering the salon, you'll find a spacious and inviting layout. Immediately to starboard is the electrical panel and entertainment center built into a hardwood corner cabinet. Further forward to starboard is a curved loveseat with storage underneath. To port is a large L-shaped sofa with two built in recliners along the port bulkhead and a hi-lo, fold out hardwood table. Forward of the salon and up one step is the fully equipped, large L-shaped galley to port. Adjacent to the galley to starboard is a 5-6 person U-shaped dinette with large Corian style table. Forward of the galley and dinette is the berthing spaces companionway. Stepping down two steps is the landing outside the VIP stateroom. Down two more steps you enter the VIP stateroom to starboard. Along the starboard bulkhead is several cabinets and a large built in chair. The centered queen berth of the VIP stateroom is located to port under the dinette. Access to the VIP wet head can be made directly from inside the VIP stateroom or from the berthing companionway. The master stateroom is forward in the bow and offers a centered queen berth and a private master

head with separate shower. Back in the cockpit you can access the flybridge via the port side molded stairway. The flybridge is fully enclosed and very spacious. The fully equipped helm is located on the starboard side of the flybridge and has a two person bench seat. Aft of the bench seat is a small wet bar and another large bench seat. To port is another curved bench seat from the stair to the helm. Behind the aft bench seat is a large storage area. From the cockpit the flybridge stairway lifts up to provide access to the engine room. The engine room can also be accessed via sole hatches in the salon. Port and starboard side walkways lead from the cockpit to the bow.

## **Meridian 411 Accommodations**

The accommodations on this motor yacht offer a comfortable sleeping arrangement for up to six people. The starboard VIP stateroom features an centered queen bed that can sleep two. The master stateroom forward in the bow also features a centered queen berth that can also sleep two. The dinette can also convert to an additional double berth with a cushion that is included.

## **Meridian 411 Salon**

The nearly full-beam salon is exceptionally spacious and radiates a sense of brightness attributed to the lighter woodwork, wall coverings and furnishings. The Large windows on both the port and starboard sides allow natural light to flood the space. A substantial sliding glass door to the cockpit, positioned to the starboard side, offers a seamless indoor-outdoor connection. Window blinds are available to provide shade and ensure privacy when needed. The vinyl planking sole and the area rugs are in great condition, enhancing the overall aesthetics and comfort of the salon. There is ample seating in the salon, primarily comprised of a large, comfortable L-shaped sofa to port that features two side by side recliners and a 2-3 person curved loveseat to starboard. Entertainment options in the salon are top-notch. The entertainment center boasts a 32" Hisense LCD flat-screen TV, a Dish Satellite TV control box, a Sony Home Theater DVD player, a Sony surround sound system to deliver high-quality audio and video entertainment in the Salon. A U-Line ice maker is installed between the loveseat and entertainment center.

## **Meridian 411 Galley and Dinette**

The large L-shaped galley is located to port forward in the main cabin. The galley and dinette are included in the open floorplan of the salon.

The galley features:

- Hardwood cabinets with Corian style countertop
- Dual basin stainless steel under counter mounted sink
- Hardwood trimmed refrigerator with separate freezer
- 2-burner Princess electric cooktop
- Power XL convection\air fryer\microwave oven
- SideBar 6 place bar spigot
- Vinyl plank hardwood flooring

The large 5-6 person U-shaped dinette with Corian style tabletop and storage under the seating is located to starboard from the galley. The dinette can also convert to an additional double berth with a cushion that is included.

## **Meridian 411 Master Stateroom and Ensuite Head**

The master stateroom is a spacious and inviting space located in the bow of this yacht. The centered queen-sized berth takes prominence and featured a mirrored headboard, a side shelf on both sides and reading lights. The queen berth not only provides a comfortable sleeping arrangement but also offers large under-berth storage to stow personal belongings. There are two portlights, one port and one starboard and an overhead hatch that lets in natural light and provide

ventilation, enhancing the comfort of the space. Along the port bulkhead of the stateroom, you'll find a generously sized storage and hanging locker, a Clarion stereo system with speakers, an LG 22" flat screen TV and a Dish satellite TV box. The sole is hardwood vinyl planking and in nice condition. The ensuite head is situated to port aft in the space. It features a vanity with a stainless steel sink mounted under a Corian style countertop, a large, mirrored medicine cabinet for storage and grooming needs and under-counter storage. A large fully enclosed shower stall with bench seat is next to the vanity and a VacuFlush toilet is next to the shower. The sole is molded fiberglass.

## **Meridian 411 VIP Stateroom and Ensuite Head**

The VIP stateroom is located aft to starboard of the master stateroom and features a centered queen berth with mirrored headboard, large mirror along the aft bulkhead, side tables and reading lights on each side. The queen berth not only provides a comfortable sleeping arrangement but also offers large under-berth storage to stow personal belongings. For added convenience along the port bulkhead there is a large hanging locker, a built in cushioned chair, a three drawer cabinet and another large hanging locker. Natural light and ventilation is provided by two portlights on the port side. The sole of the VIP stateroom is hardwood vinyl planking. Forward in the VIP stateroom, a private door leads to the VIP guest wet head, enhancing the privacy and convenience of this space. The VIP guest wet head is thoughtfully designed and equipped with a stainless steel under-counter mounted sink, a stylish Corian countertop, and dual mirrors above the vanity. The VacuFlush toilet is to the right of the vanity and has a double sliding door storage compartment above it with a hardwood shelf and single portlight above that. The sole is molded fiberglass and a shower curtain rail in the overhead surrounds the entire space and the pull out shower head/sink faucet provides showering capabilities. The VIP guest head can also be accessed from the berthing companionway. This thoughtful design ensures that guests have all the amenities they need for a pleasant and enjoyable stay on the yacht.

## **Meridian 411 Flybridge**

The staircase connecting the cockpit to the flybridge doubles as the main entrance to the engine room when the staircase is lifted. Upon reaching the flybridge, one is immediately struck by the impressive and very spacious seating area. The flybridge offers breathtaking 360-degree views around the yacht which not only enhances the navigational vision but also allows passengers to fully appreciate the surrounding scenery. At the front of the flybridge, the helm is positioned to starboard and has a two person bench seat for the captain and navigator. Behind the helm bench seat is a small wet bar with hot and cold water sink and a large settee. To port is another large curved settee. The wrap-around seating on the flybridge is designed to comfortably accommodate many people, making it an excellent space for socializing and taking in the views. The entire flybridge is enclosed with a large bimini top and Makralon enclosure with several opening panels, all of which are in nice condition. This enclosure helps create a comfortable and protected environment on the flybridge, regardless of the weather conditions. Aft on the flybridge is a large open storage area. The sole of the flybridge is covered with a woven floor covering.

The flybridge helm features:

- Raymarine Chartplotter
- Raymarine Radar
- Raymarine Autopilot
- AIS Transceiver
- 2 - SMX DigitalView Mechanical Engine Monitor displays
- 2 - ICOM IC-M504 VHF Radio with DSC
- Rockford Fosgate stereo with Pandora and Sirius capabilities and several speakers and sub-woofer
- Bow and stern thruster controls with wireless remote
- Trim tabs and windlass controls
- Search light controls
- Kidde Fyrewath system



- SeaFire Fire Suppression
- Danforth Compass

## **Meridian 411 Cockpit and Swim Platform**

The spacious cockpit, as well as the swim platform on this motor yacht, offer a delightful outdoor area for various activities, such as line handling, tender operations and entertaining. Engine room access is conveniently located under the flybridge stairway, ensuring easy maintenance and inspection of the yacht's machinery. Additionally, deck hatches provide access to the lazarette, which houses essential equipment, including many of the batteries and provides additional storage. The cockpit sole, side walkway steps and stairs to the flybridge as all covered in Sea Deck synthetic flooring. On the swim platform you will find a Glendinning Cordmaster, offering efficient management of the shore power cord, along with dockside water and cable hookup for seamless connectivity. A freshwater hot and cold shower is also located on the swim platform provides added convenience, allowing you to refresh after a swim or outdoor activities. The foredeck can be accessed from the cockpit via walkways on both the port and starboard sides, enhancing mobility around the yacht. The large swim platform is not only a great place for water access but also offers a large storage compartment for stowing various items in the cockpit. Furthermore, it features a fold-and-stow swim ladder, making it easy to enter and exit the water safely and conveniently. A Hurley Marine H30 davit is mounted on the swim platform and hold the Zodiac 11' center console RIB tender and 15 HP Tohatsu outboard motor.

## **Meridian 411 Engine and Mechanical Equipment**

This yacht is outfitted with the following engine/mechanical equipment:

- Cummins 6BTA 5.9L 370 HP Main Diesel Engines (2,930 and 2,933 hours)
- ZF 80A 2.0 Gearboxes
- Bow and stern thruster
- 11 Gallon Kuuma water heater
- 4 zone reverse cycle air conditioning\heating
- 3 zone electric heaters
- Dual Racor fuel filters for each engine with vacuum gauges
- Glendenning mechanical engine synchronizer
- Reverso 3 port oil change system
- Dripless shaft seals
- Stainless Steel propeller shafts
- Central Vacuum system
- Spare set of propellers
- Many spare parts and filters

## **Meridian 411 Electrical System**

This yacht is outfitted with the following electrical equipment:

- 12/24vdc 125/250vac 50 amp electrical system
- 11.5 KW Onan Generator (6,036 hours)
- Xantrex Freedom XC 2000 watt Inverter
- Xantrex True Charge 40 AMP Battery Charger
- 2 - Group 27 main engine start batteries (2022)
- Group 31 stern thruster battery (2022)
- 2 - 6 VDC house batteries (2018)
- 2 - 6 VDC bow thruster batteries (2022)
- 2 - Lithium inverter batteries (2023)

- Battery management panel
- 50' - 50 AMP retractable shore power system in cockpit
- 50' - 50 AMP additional shore power cord for bow in connection
- Numerous shore power splitters and adapters

## **Meridian 411 Audio and Video Equipment**

This yacht is outfitted with the following audio and video equipment:

- Raymarine 45 STV stabilized satellite TV antenna
- 3 - Arlo wireless camera system (Bow, Stern, Engine Room)
- 32" Hisense LCD flat screen TV (Salon)
- LG 22" flat screen TV (Master Stateroom)
- Sony DVD player Home Theater system
- Sony surround sound speakers
- Rockford Fosgate stereo with Pandora and Sirius capabilities and several speakers and sub-woofer
- Rockford Fosgate stereo control in cockpit
- Multiple speakers in several spaces
- La Crosse Weather System

## **Meridian 411 Deck Equipment**

This yacht is outfitted with the following deck equipment:

- Lewmar windless with 200' 5/16" chain rode
- Imtra windlass foot switches
- Custom, polished stainless anchor roller
- 65 lbs Bruce stainless steel claw anchor
- Auxiliary fluke style anchor and rope rode
- Anchor bridle
- Bow wash down spigot
- Sun cover for main windscreen
- Search light
- Magma Propane Grill
- 2 - Stainless Steel dual fender racks
- Stainless Steel stanchions and handrails
- Fenders and lines

## **Meridian 411 Fire & Safety Equipment**

This yacht is outfitted with the following fire and safety equipment:

- Fireboy Clean Agent fire suppression system
- Global Fix EPIRB
- Fire extinguishers
- Air horn
- CO and smoke detectors
- Bilge pumps
- Search light
- PFDs
- Life Ring

## **Meridian 411 Exclusions**

- Sellers personal belongings
- Artwork
- Personal tools
- StarLink Satellite System (cable will be left installed)
- Viva Ebikes





Port Profile



Port Bow Profile



Bow Profile



Starboard Bow Profile





Cockpit Forward



Cockpit Port





Cockpit Starboard



Cockpit Aft





Salon Forward



Salon Port



Salon Starboard



Salon Aft





Galley and Dinette Forward



Galley and Dinette Port



Galley and Dinette Starboard



Galley and Dinette Aft





VIP Stateroom Entryway



VIP Stateroom Port



VIP Stateroom Starboard



VIP Wet Head





Master Stateroom Forward



Master Stateroom Port





Master Stateroom Starboard



Master Head Toilet and Shower



Master Head Vanity and Shower



Flybridge Forward



Flybridge Helm





Flybridge Port



Flybridge Starboard



Flybridge Aft

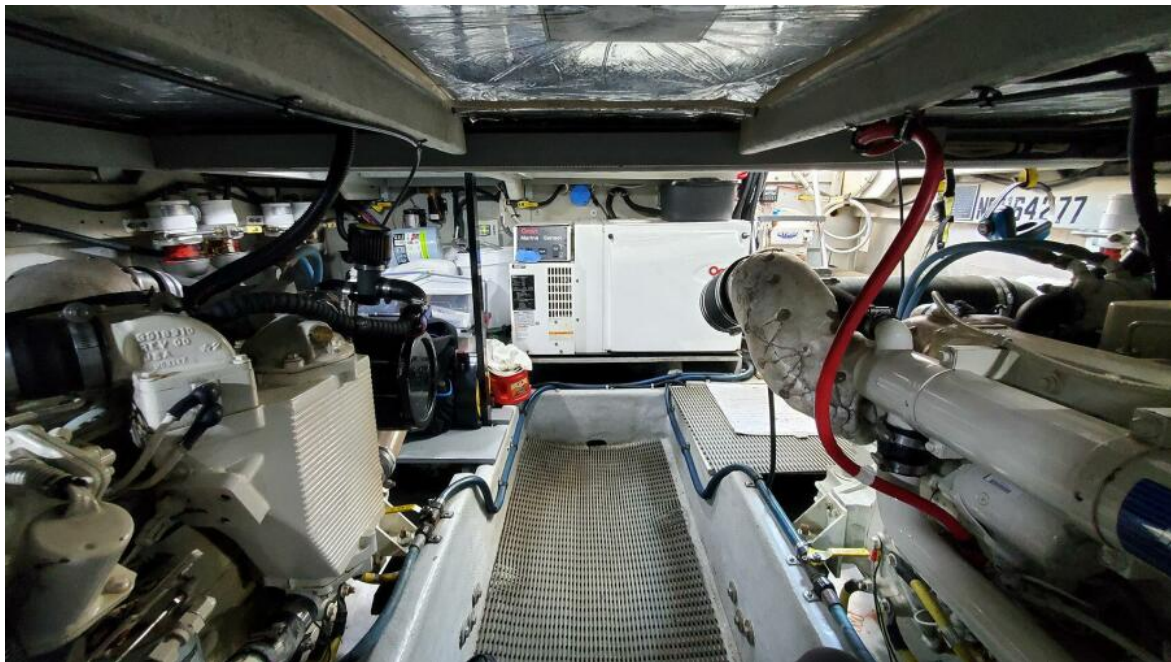




Engine Room Companionway

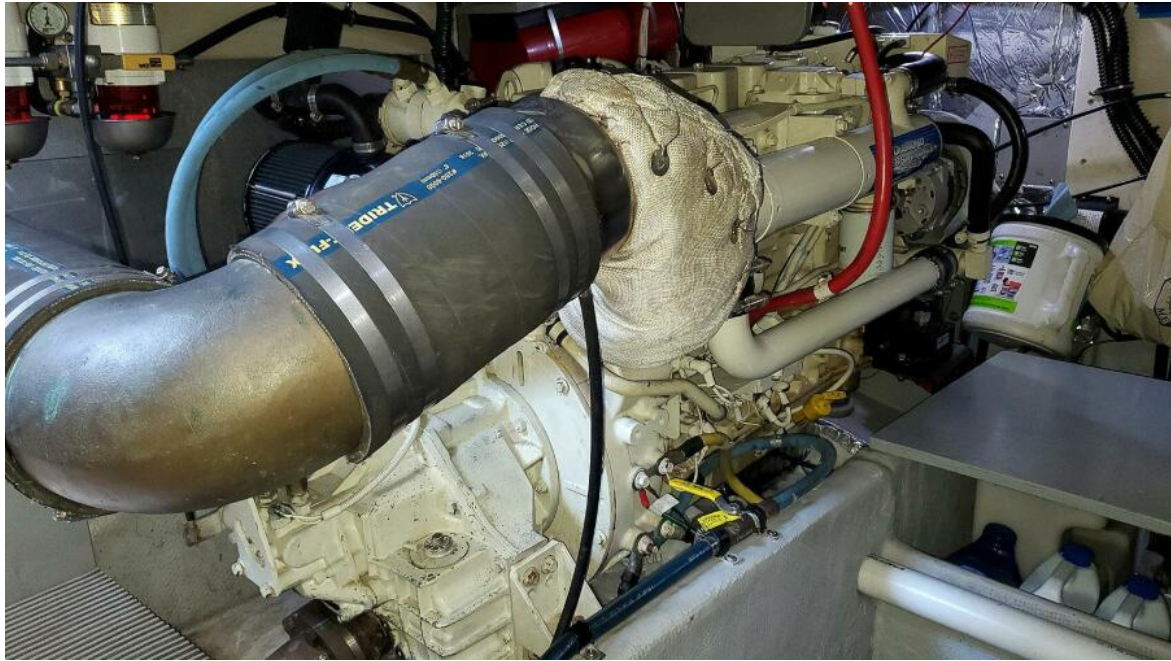


Engine Room Forward



Engine Room Aft





Port Main Engine Forward



Port Main Engine Aft





Starboard Main Engine Forward



Starboard Main Engine Aft





ZF Transmissions



Fuel Filtration



Dripless Shaft Seals



Fire Suppression





Spare Props



Oil Change System



Water Heater



Generator





Generator



Battery Charger





Inverter



Battery Management Panel



Electrical Panel



Walkway Port





Walkway Starboard



Fore Deck Forward



Bow Pulpit





Windlass



Anchor



Fore Deck Aft





Zodiac Tender



Outboard



Davit

1-440-781-8201





Grill