



# Permanent Vacation

52' (15.85m) 2000 Bayliner 5288 Pilothouse Motor Yacht  
Counce Tennessee United States



## OVERVIEW

**\$339,900**

Manufacturer:	Bayliner		
Engines:	2 MAN	Hull Material:	Fiberglass
Engine Model:	D2688 LE 405	Cruise Speed:	20 Knots
Engine HP:	610	Max Speed:	25 Knots
Beam:	16' 3"	Cabins/Heads:	3 / 2
Max Draft:	4' 10"	Fuel Type:	Diesel
Water:	200 G (757.08 L)	Fuel:	700 G (2649.79 L)



## Data Sheet

Category: Pilothouse  
Subcategory: Motor Yachts  
Condition: Used  
Model Year: 2000  
Beam: 16'3" (4.95m)  
Max Draft: 4' 10" (1.47m)  
LOA: 52' (15.85m)  
Cabins: 3  
Heads: 2

Maximum Speed: 25 Knots  
Cruise Speed: 20 Knots  
Fuel Type: Diesel  
Hull Material: Fiberglass  
Hull Shape: Modified Vee  
Hull Finish: Gelcoat  
Air Conditioning: Yes  
Bridge Clearance: 19' 3

Dry Weight: 47560 lbs  
Bow Thruster: Yes  
Fuel Tank: 700 gal (2649.79 liters)  
Fresh Water: 200 gal (757.08 liters)  
Holding Tank: 73 gal (276.33 liters)  
Imported: Yes  
HIN/IMO: BLBA11EFH900

## Engines/Generators

### Engine 1

MAN  
D2688 LE 405  
610HP  
454.88KW  
Fuel: Diesel  
Hours: 3703  
Location: Port

### Engine 2

MAN  
D2688 LE 405  
610HP  
454.88KW  
Fuel: Diesel  
Hours: 3707  
Location: Starboard

### Generator 1

Kohler  
12KW  
Hours: 3059

## Summary/Description

Step aboard this Bayliner 5288 Pilothouse Motor Yacht known as Permanent Vacation & experience a truly distinctive vessel that combines spaciousness, versatility & remarkable comfort. As a multiple Great Loop veteran, this yacht offers a unique blend of features that sets it apart from the rest.

Permanent Vacation is a well maintained and exquisite Bayliner 5288 pilot house motor yacht. Its well-thought-out design and luxurious accommodations make it ideal for extended living on the water. The yacht features a range of amenities, including a full-beam master stateroom with an ensuite head, a forward island queen VIP stateroom, and a third bunk room with a shared head for guests. The master head includes a tub with a shower, while the guest head offers a separate shower stall. An apartment-sized washer and dryer are conveniently located in the bunk room, adding to the overall comfort of living aboard for extended periods. The yacht's helms are thoughtfully designed and well-equipped, providing excellent visibility for navigation. The pilothouse helm is complemented by a spacious L-shaped settee, with easy access to the flybridge, staterooms, galley, and salon. Sliding side doors to port and starboard allow seamless access to the deck. The flybridge offers a large seating area, perfect for entertaining, and provides access to the aft flybridge deck, where you'll find the davit, tender, and a propane grill for outdoor grilling. The U-shaped stainless steel galley boasts ample storage and counter space and is open to the salon and pilot house, creating a seamless flow for entertaining and meal preparation. The salon, nearly full beam, features a large sliding glass door for easy access to the cockpit and swim platform. Permanent Vacation is powered by twin MAN 610 HP diesel engines and is equipped with a substantial 12 KW generator to meet all its electrical needs. This motor yacht is a seasoned veteran of the Great Loop and is ready for immediate cruising adventures. Permanent Vacation is a well-appointed motor yacht that combines comfort, functionality, and performance, making it an excellent choice for those seeking extended cruising experiences.

Recent upgrades and maintenance includes:

- New main engine alternators (2023)
- 4 - New 8D Batteries (2023)
- New pilot house air conditioner (2022)
- 1,000 service completed (2022)
- Bottom paint renewed (2022)
- New cutlass bearings (2022)
- New tri-ducer installed (2022)
- Underwater light installed (2022)
- EPIRB added (2022)
- New VIP stateroom air conditioner (2021)
- New salon air conditioner (2021)
- New blinds in salon (2021)
- New Windlass motor (2021)

## Bayliner 5288 PHMY Walk Through

Boarding Permanent Vacation offers multiple convenient options. You can access the yacht via the swim platform or the cockpit, leading directly into the salon. Additionally, you have the choice of entering through the port and starboard side doors amidships, which lead into the raised pilothouse. Upon entering the salon, you'll find a spacious and inviting layout. To starboard, there's a large L-shaped wrap-around sofa with a sizable fold-out table. The entertainment center, along with an ice maker and a printer, is situated forward on the starboard side. On the port side of the salon, you'll discover two comfortable barrel chairs with a small table between them. Moving forward, you'll see the counter separating the salon from the galley. The large U-shaped galley is positioned forward in the main cabin to the port side

and is beautifully adorned with stainless steel cupboards and appliances. For those who wish to reach the pilothouse, there are stairs on the starboard side of the main cabin, leading to the centrally located pilothouse helm, where a wrap-around settee can be found on the port side. More stairs on the starboard side of the pilothouse lead up to the flybridge. The flybridge helm is centrally located and features two captain's chairs. An extensive L-shaped seating area wraps from the port side behind the helm to the starboard side, and it includes a storage cabinet. Adjacent to the helm on the starboard side, there's a small refrigerator. For those interested in accessing the tender and davit, you can do so at the starboard aft end of the flybridge seating area. This area also hosts a propane grill on the starboard side, a tender positioned in the center, and the tender davit to the port side. Returning to the pilothouse helm, a staircase along the starboard side leads to the staterooms. At the bottom of the stairs, you'll find the master stateroom, which is situated aft under the pilothouse and features an ensuite head to the port side. The bunk room is located forward to the port of the master stateroom, with the guest head positioned to the starboard side. The VIP stateroom is situated forward in the bow of the yacht, offering comfortable and well-appointed accommodations.

## **Bayliner 5288 PHMY Accommodations**

The accommodations on this motor yacht offer a comfortable sleeping arrangement for up to 6 people. The forward VIP stateroom features an island queen bed with convenient under-berth storage and spacious hanging lockers on both the port and starboard sides. There's a private door to the guest head on the starboard. Natural lighting and ventilation are provided through an overhead hatch and portlights. Aft to the VIP stateroom, the bunk room is located to the port side, with two over-under single berths. A single portlight allows natural light and ventilation, and there is storage space under the lower bunk. Additionally, in this area, you'll find the stacked washer and dryer for added convenience. The guest head is conveniently situated to the starboard of the bunk room.

The master stateroom, which is generously spacious and spans the width of the yacht below the pilothouse, is a luxurious retreat. As you enter the space, you'll find the ensuite head with a separate tub/shower stall and toilet immediately to the port. A large vanity with mirrors and medicine and storage cabinets is along the port bulkhead. The centered queen bed is located to the starboard side of the master stateroom, with nightstands on either side for added convenience. Two portlights above the bed provide natural light and ventilation to the space. Additionally, you'll find additional storage cabinets in the aft wall of the master stateroom, enhancing the overall functionality and comfort of this living space.

## **Bayliner 5288 PHMY Salon**

The nearly full-beam salon is exceptionally spacious and radiates a sense of brightness, attributed to the lighter woodwork and well-placed features. Large opening windows on both the port and starboard sides allow natural light to flood the space. A substantial sliding glass door to the cockpit, positioned to the port side, offers a seamless indoor-outdoor connection. Window blinds are available to provide shade and ensure privacy when needed. The carpeted sole and the area rugs are in nice condition, enhancing the overall aesthetics and comfort of the salon. There is ample seating in the salon, primarily comprised of a large, comfortable L-shaped sofa and two inviting barrel chairs. Entertainment options in the salon are top-notch. The entertainment center boasts a 40" Sharp LCD flat-screen TV, a Sony DVD player, a Sony Audio Video Receiver, and several speakers to deliver high-quality audio and video entertainment in the main cabin. For added convenience, a wireless printer, the HP Color LaserJet Pro MFP M177fw, is neatly tucked away in the starboard forward cabinet, making it easy to handle any printing, scanning, or copying needs while on board.

## **Bayliner 5288 PHMY Galley**

The large U-shaped galley is located to port forward in the main cabin. The galley is open to the salon and pilothouse.

The galley features:

- Stainless steel trimmed cabinets and appliances
- Dual basin stainless steel under counter mounted sink
- Full size stainless steel refrigerator with separate freezer (AC only)
- 3-burner electric cooktop
- GE Profile stainless steel convection microwave oven
- Avanti stainless steel dishwasher
- U-Line Ice Maker
- iCoffee Coffee Maker
- Corian counter tops
- Teak and holly hardwood flooring
- Stainless steel trimmed storage drawers and cabinets

## Bayliner 5288 PHMY Raised Pilothouse

The spacious raised pilothouse on this motor yacht serves as an exceptional area for both navigation and entertainment. The wrap-around settee, complete with a fold-out tabletop, provides a comfortable seating arrangement for the crew or guests, making it an ideal spot for socializing and entertainment. The use of lighter carpeting on the sole, upholstery covering the settee, and the large surrounding windows all contribute to creating a bright and airy atmosphere in the pilothouse. The ample natural light and well-designed layout ensure excellent visibility throughout the yacht, enhancing the overall navigational experience. Conveniently, a sliding glass side door with screens on both the port and starboard sides allows for quick and easy access to the foredeck. This accessibility is particularly handy for tasks such as line handling and anchoring, adding to the functionality and utility of the pilothouse.

The helm in the pilothouse features:

- Raymarine Radar
- Raymarine E127 Hybrid Touch Chartplotter
- AIS Transceiver
- Raytheon RayPilot 650 Autopilot
- Raymarine VHF radio with DSC
- Raymarine RayMic Auxiliary VHF handset
- Standard Horizon handheld VHF Radio
- MAN engine monitors
- Exhaust temperature alarm
- Morse controls
- Engine gauges and overhead switch panel
- Ritchie Compass
- Bow Thruster controls
- Search light controls
- Trim tabs (INOP) and windlass controls
- Fireboy override
- Handheld floodlight
- AC controls

## Bayliner 5288 PHMY Master Stateroom and Ensuite Head

The master stateroom is a spacious and inviting haven, extending across the beam of the yacht just below the pilothouse. To the starboard side, a centered queen-sized bed takes prominence, flanked by nightstands that offer convenient storage space on both sides. Above the master berth, two portlights let in natural light and provide ventilation, enhancing the comfort of the space. Along the aft bulkhead of the stateroom, you'll find a generously sized storage and hanging locker, complemented by a wide, wall-mounted mirror, adding to the functionality and aesthetics of

the room. The ensuite head is situated along the port bulkhead, offering a well-equipped and stylish space. It features a vanity with a molded sink set in a Corian countertop, a large, three-mirrored medicine cabinet for storage and grooming needs, under-counter storage, and a tall cabinet with a pull-out flat-screen TV for entertainment. Forward of the vanity is a private area housing the Vacuflush toilet and a separate tub/shower stall, ensuring privacy and comfort for the master stateroom occupants. The stateroom is carpeted and showcases hardwood paneling throughout, combining a cozy ambiance with elegant design elements for a truly welcoming space.

## **Bayliner 5288 PHMY VIP Stateroom**

The focal point of the VIP stateroom is the island queen bed, which takes center stage in this inviting space. It not only provides a comfortable sleeping arrangement but also offers large under-berth storage to stow personal belongings. For added convenience, there is a hanging locker on each side of the stateroom, ensuring ample storage for guests. To the starboard side of the VIP stateroom, a private door leads to the guest head, enhancing the privacy and convenience of this area. Natural light and ventilation are abundant in the VIP stateroom, thanks to a large overhead hatch and two portlights. These features contribute to a bright and airy atmosphere, making the space even more inviting. The sole of the stateroom is carpeted, adding to the overall comfort and cozy feel of the room.

## **Bayliner 5288 PHMY Bunk Room**

The bunk room, featuring two single over-under berths, is located aft to the port side of the VIP stateroom. To promote a comfortable and functional environment, a single portlight in the room provides natural light and ventilation. Ample storage is available under the lower bunk, allowing guests to keep their personal belongings organized and out of the way. Additionally, the yacht's laundry facilities can be found in a dedicated cabinet within this space, ensuring practicality and convenience for extended stays. The guest head is conveniently located adjacent to the bunk room, to the starboard side, further enhancing the ease and comfort of guests on board.

## **Bayliner 5288 PHMY Guest Head**

The guest head is thoughtfully designed and equipped with a molded under-counter sink, a stylish Corian countertop, and a generously-sized mirrored medicine cabinet. The guest head is furnished with a Vacuflush toilet. An additional feature that enhances the functionality and comfort of the guest head is the separate shower stall, providing a dedicated space for showering and maintaining privacy within the area. This thoughtful design ensures that guests have all the amenities they need for a pleasant and enjoyable stay on the yacht.

## **Bayliner 5288 PHMY Laundry**

The Bayliner 5288 PHMYs laundry features individual Ariston stacked washer and dryer built into the bunk rooms cabinet.

## **Bayliner 5288 PHMY Flybridge**

The staircase connecting the pilothouse to the flybridge features a large glass sliding door, complete with a screen door, providing the option to close off the area as needed. Upon reaching the flybridge, one is immediately struck by the impressive and very spacious seating area. The flybridge offers breathtaking 360-degree views around the yacht, allowing passengers to fully appreciate the surrounding scenery. At the front of the flybridge, the helm is centrally positioned, with two comfortable captain's chairs for navigation. To the starboard side of the helm, you'll find a Uline mini refrigerator with an ice maker, adding to the convenience of the area. The wrap-around seating on the flybridge is designed to comfortably accommodate many people, making it an excellent space for socializing and taking in the views. The entire flybridge is enclosed with a large bimini top and Isinglass, featuring screens on the opening panels, all of which are in great condition. This enclosure helps create a comfortable and protected environment on the flybridge,



regardless of the weather conditions. Additionally, covers for both the helm and seating are included, ensuring the protection and preservation of these areas when not in use.

The flybridge helm features:

- Raymarine Radar
- Raymarine A67 Chartplotter
- AIS Transceiver
- Raytheon RayPilot 65 Autopilot with wired remote
- Raymarine Ray218 VHF Radio with DSC
- West Marine WM4000 AM/FM marine radio with Bluetooth and Sirius capabilities
- Bow Thruster controls
- Trim tabs (INOP) and windlass controls
- Search light controls
- Fireboy override

On the aft deck of the flybridge is:

- Davit with wired remote
- 2006 Achilles RIB with Honda 20 HP Outboard
- Magna Grill with large propane bottle

## **Bayliner 5288 PHMY Cockpit and Swim Platform**

The spacious cockpit, as well as the swim platform on this motor yacht, offer a delightful outdoor area for various activities, such as line handling and entertaining. Engine room access is conveniently located under a lift-up stairway hatch, ensuring easy maintenance and inspection of the yacht's machinery. Additionally, deck hatches provide access to the lazarette, which houses essential equipment, including the generator, main engine start batteries, house batteries, and provides additional storage. Within the cockpit area, you'll find a Glendinning Cordmaster, offering efficient management of the shore power cord, along with dockside water and cable hookup for seamless connectivity. A freshwater hot and cold shower in the cockpit provides added convenience, allowing you to refresh after a swim or outdoor activities. The foredeck can be accessed from the cockpit via narrow walkways on both the port and starboard sides, enhancing mobility around the yacht. The large swim platform is not only a great place for water access but also offers a large transom storage compartment for stowing various items. Furthermore, it features a fold-and-stow swim ladder, making it easy to enter and exit the water safely and conveniently.

## **Bayliner 5288 PHMY Engine/Mechanical Equipment**

This yacht is outfitted with the following engine/mechanical equipment:

- Twin MAN D2866-LE-405 610 HP diesel main engines (3,703 hours port, 3,707 hours starboard)
- 1,000 hour service completed on mains in 2022
- ZF IRM311A.1 Gearboxes
- Bow thruster
- Large capacity water heater
- 5 zone reverse cycle air conditioning/heating
- Racor fuel filters
- Reverso 5 port oil change system
- Stainless Steel propeller shafts
- Central Vacuum system
- Many spare parts and filters

## Bayliner 5288 PHMY Electrical System

This yacht is outfitted with the following electrical equipment:

- 12/24vdc 125/250vac 50 amp electrical system
- 12 KW Kohler Generator (3,059 hours)
- Trace Engineering 2.6 KW High Efficiency Power Inverter
- Mastervolt Chargemaster 24/20-3 Battery Charger
- 65' - 50 amp retractable shore power system in cockpit
- Guest battery switches
- 4 - Group 31 Main Engine Start Battery Bank
- 4 - 8D House Battery Bank

## Bayliner 5288 PHMY Audio and Video Equipment

This yacht is outfitted with the following audio and video equipment:

- 40" Sharp LCD flat screen TV (Salon)
- Proscan flat screen TV (Master Stateroom)
- Sony DVD player
- Sony Audio Video Receiver
- Digital TV Antenna
- West Marine WM4000 AM\FM marine radio with Bluetooth and Sirius capabilities
- Multiple speakers in several spaces

## Bayliner 5288 PHMY Deck Equipment

This yacht is outfitted with the following deck equipment:

- Lewmar windless with 200' chain and 150' rode
- Maxwell windlass foot switches
- Plow anchor
- Auxiliary 48 lb. Stainless Steel hinged plow anchor
- Auxiliary Fortress aluminum anchor
- Anchor bridle
- Bow wash down spigot
- Sun cover for main windscreen
- Go light remote control led search light
- Glendinning coiling 50 amp power cord system with 651 of cord
- Davit with wired remote
- 2 - Paddleboard Racks
- 2 - Stainless Steel Fender racks
- Stainless Steel stanchions and handrails
- Fenders and lines

## Bayliner 5288 PHMY Fire & Safety Equipment

This yacht is outfitted with the following fire and safety equipment:

- Fireboy Clean Agent fire suppression system
- ACR EPIRB
- Fire extinguishers



- Air horn
- CO and smoke detectors installed
- Rule bilge pumps
- Go light search light
- High water Alarm
- Exhaust Temperature Alarm
- PFDs

## **Bayliner 5288 PHMY Exclusions**

- Sellers personal belongings
- Artwork
- Personal tools
- Fishing Gear
- Kayak

## **Bayliner 5288 PHMY Disclaimer**

The company offers the details of this vessel in good faith but cannot guarantee or warrant the accuracy of this information nor warrant the condition of the vessel. A buyer should instruct his agents, or his surveyors, to investigate such details as the buyer desires validated. This vessel is offered subject to prior sale, price change or withdrawal without notice.



Starboard Profile



Starboard Bow Profile



Starboard Stern Profile



Stern Profile





Port Stern Profile



Cockpit Forward



Cockpit Port



Cockpit Starboard





Salon Forward



Salon Port





Salon Starboard



Salon Aft



Galley Port



Galley Forward





Galley Aft



Pilothouse Forward





Pilothouse Helm



Pilothouse Port



Pilothouse Starboard



Pilothouse Aft





Pilothouse Berthing Companionway





Master Stateroom Starboard Aft



Master Stateroom Starboard



Master Stateroom Port



Master Head Vanity



Master Head Tub and Shower





Master Head Toilet



VIP Stateroom Forward



VIP Stateroom Port



VIP Stateroom Starboard





Bunk Room



Guest Head Vanity and Shower



Guest Head Shower and Toilet



Laundry



Flybridge Forward



Flybridge Helm





Flybridge Port



Flybridge Starboard





Flybridge Aft



Tender



Tender

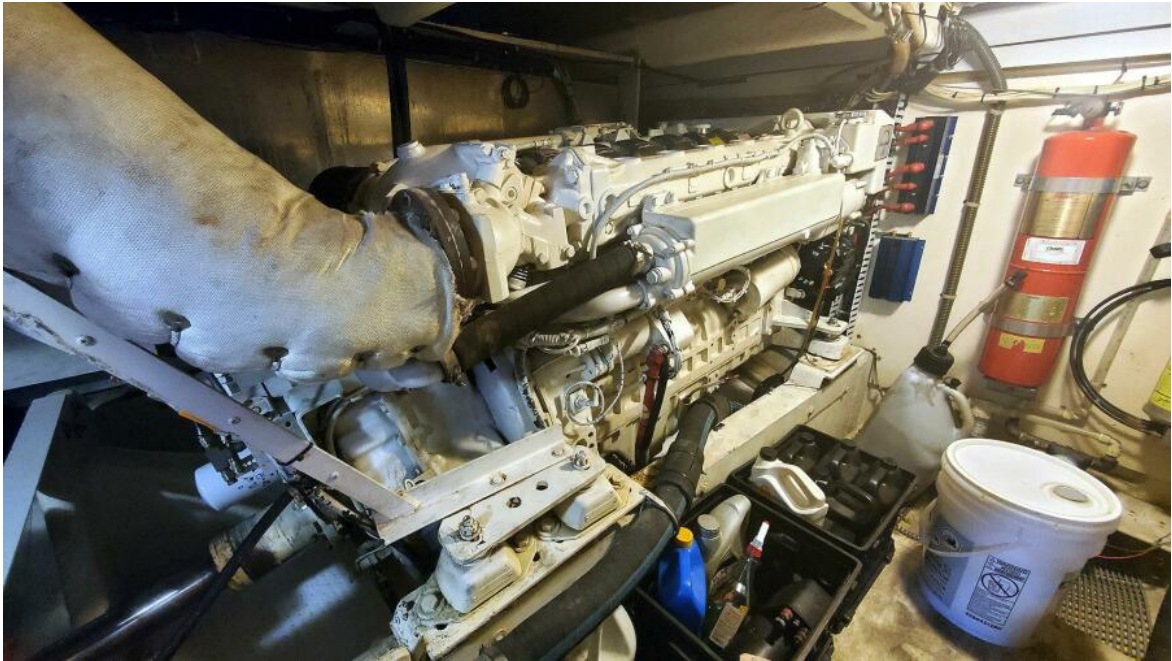


Engine Room Companionway





Engine Room Forward



Engine Room Port





Port Main Engine

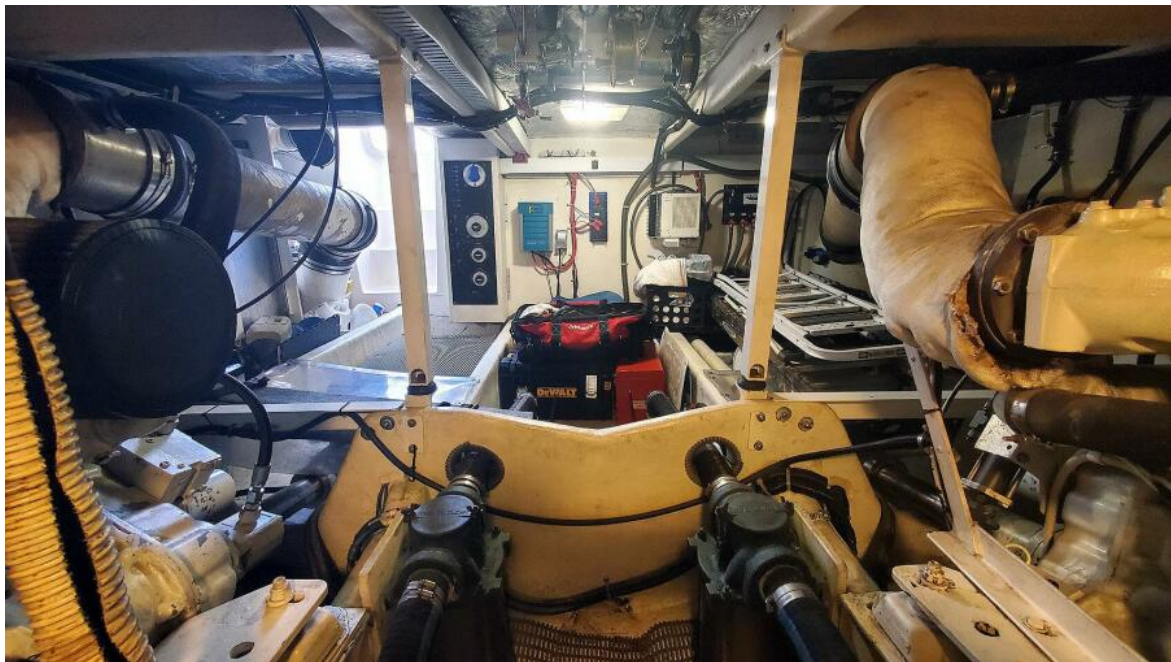


Engine Room Starboard





Starboard Main Engine



Engine Room Aft





Transmission



Fuel Filtration



Dripless Shaft Seal



Fire Suppression





Oil Change System



Bow Thruster



Generator



Generator





Battery Charger and Inverter





Battery Charger



Battery Bank



Battery Bank



Battery Bank





AC Electrical Panel



DC Electrical Panel



Port Side Walkway





Starboard Side Walkway



Fore Deck Forward



Fore Deck Aft



Bow Sun Pads



Anchor Windlass





Primary Anchor



Auxiliary Anchor





Auxiliary Anchor



Anchor Rode



Outboard





Davit



EPIRB