



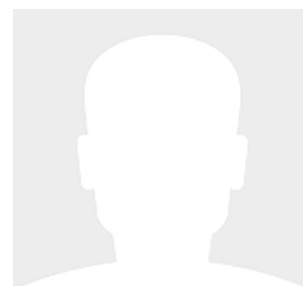
48' (14.63m) 2024 Sessa
Palm Beach Gardens Florida United States



OVERVIEW

\$1,746,513

Manufacturer:	Sessa	Hull Material:	Fiberglass
Engines:	2 Volvo	Cruise Speed:	
Engine Model:	Penta D8 - IPS 800	Max Speed:	
Engine HP:	600	Cabins/Heads:	3 / 2
Beam:	14' 3"	Fuel Type:	Diesel
Max Draft:	3' 7"	Fuel:	498 G (1885.13 L)
Water:	148 G (560.24 L)		



Data Sheet

Category: Motor Yachts
Condition: New
Model Year: 2024
Beam: 14'3" (4.34m)
Max Draft: 3' 7" (1.09m)
LOA: 48' (14.63m)
Cabins: 3
Heads: 2

Fuel Type: Diesel
Hull Material: Fiberglass

Dry Weight: 38580 lbs
Fuel Tank: 498 gal (1885.13 liters)
Fresh Water: 148 gal (560.24 liters)
Holding Tank: 44 gal (166.56 liters)
HIN/IMO: SSM48010L324
Stock #: B93513

Engines/Generators

Engine 1

Volvo
Penta D8 - IPS 800
Inboard
600HP
447.42KW
Fuel: Diesel
Hours: 25
Year: 2024

Engine 2

Volvo
Penta D8 - IPS 800
Inboard
600HP
447.42KW
Fuel: Diesel
Hours: 25
Year: 2024

Summary/Description

The Sessa F48 emerges as a pinnacle of maritime prowess, embodying a harmonious fusion of opulence and performance that transcends the ordinary.

The Sessa F48 emerges as a pinnacle of maritime prowess, embodying a harmonious fusion of opulence and performance that transcends the ordinary. From its sleek exterior to its meticulously crafted interiors, every facet of this luxury yacht resonates with unparalleled sophistication and elegance.

At first glance, the F48 captivates with its striking silhouette, a testament to Sessa Marine's unwavering commitment to design excellence. The graceful lines and contemporary styling exude a sense of timeless beauty, setting it apart as a true icon on the water.

Step aboard, and the F48 welcomes you into a realm of indulgence and refinement. The interior spaces are a masterpiece of craftsmanship, where every detail is carefully considered to evoke a sense of luxury and comfort. High-quality materials, exquisite finishes, and bespoke furnishings create an ambiance of understated luxury, inviting you to relax and unwind in style.

The living areas are thoughtfully designed to maximize space and functionality, offering a seamless blend of form and function. From the expansive salon with its panoramic views to the well-appointed galley equipped with top-of-the-line appliances, every aspect of the F48's interior is designed to cater to the discerning tastes of its occupants.

Below deck, the accommodations are nothing short of luxurious. The master suite is a sanctuary of serenity, featuring a king-size bed, ample storage, and an en-suite bathroom complete with premium fixtures and fittings. Additional guest cabins offer equally sumptuous accommodations, ensuring that every guest enjoys the utmost comfort and privacy during their stay.

But the true beauty of the F48 lies in its performance on the water. Powered by twin diesel engines, this yacht delivers exhilarating speed and agility, effortlessly slicing through the waves with precision and grace. State-of-the-art navigation and control systems ensure smooth handling and maneuverability, allowing you to navigate with confidence in any conditions.

Whether cruising leisurely along the coastline or embarking on an adventure to distant shores, the F48 offers a truly unforgettable experience on the water. Its spacious decks provide ample space for sunbathing, alfresco dining, and entertaining guests, while the integrated swim platform offers easy access to the water for swimming, snorkeling, and other water sports.

As the sun sets on another day at sea, the F48 transforms into a magical oasis, where laughter and conversation flow freely beneath the starlit sky. With its sophisticated lighting, integrated audiovisual system, and climate-controlled cabins, this yacht sets the stage for unforgettable evenings spent in the company of loved ones.

In every aspect, the Sessa F48 represents the epitome of maritime excellence, where luxury meets performance in perfect harmony. Immerse yourself in the world of opulence and adventure aboard this remarkable yacht, and discover a new standard of luxury living on the water.

Main Deck

- Anchor box access cover
- 20 Kg (44.09 lbs) stainless steel anchor
- Stainless steel anchor trolley
- 164.04 feet of 10mm galvanized chain
- Anchor safety lock
- 1500W electric anchor winch
- Stainless steel guardrail and safety cable
- Bow, midship, and stern cleats in 316 stainless steel
- Stainless steel fairleads at bow and stern
- Searchlight with control
- Winch activation buttons
- Fuel refueling points (port and starboard)
- Water refueling point
- Navigation lights
- Courtesy lights on the walkway
- Blackout screen for windshield and side windows
- Dual windshield wiper with water spray
- Bow solarium with foldable backrest and courvin nautical mattress with UV and mold protection
- Stainless steel handrail for bow access via walkway
- 2 double stainless steel 316 fender holders and 4 fender covers with Sessa logo
- Black water tank drainage outlet
- 2 ribbed beach towels
- 1 personalized Sessa towel rack
- Bow comfort kit (shower, cup holders, and 1 pair of speakers)

Cockpit

- Teak floor covering
- “L” shaped stern sofa with storage compartment
- Cockpit parasol screen
- Foldable teak table
- 1 pair of speakers
- Courtesy lights
- LED lighting with dimmer
- Built-in trash can in stern furniture
- Shore power socket
- Buttons for external lights and platform activation
- Furniture with cabinet, sink, hot and cold water mixer, and volcanic stone grill with cover
- Cup holder furniture under the stairs to the fly
- Drains with stainless steel finish
- Machine room access cover

- Stainless steel and teak steps ladder to the fly
- Stainless steel cockpit access door
- Hot/cold shower

Salon

- Stainless steel glass door with 4-leaf wide opening
- Front windshield and side windows
- Salon door curtain
- Wooden side blinds
- Wooden furniture
- Counter-type cabinet with three doors and electric lift for 43" full HD Smart TV
- L-shaped sofa with puff
- Telescopic table with wooden and leather finish
- MP3 radio with Bluetooth and USB input
- 42.27 gallons 2-door refrigerator
- 1 pair of speakers
- Electrical panel with service management system and protection breakers
- Air conditioning outlet
- 3 220V sockets
- Induction cell phone charger
- LED lighting with dimmer
- Wooden steps access to cabins with courtesy lights
- Leather-covered stainless steel handrail
- Wooden floor

Console

- Console with textured panel, acrylic and leather finish with stainless steel handrail
- Leather steering wheel with angle adjustment (retractable)
- Dual pilot seat in leather
- Upper panel light
- Stainless steel function keys set
- USB socket
- Compass
- Electric opening side window
- Upper cabinet above pilot seat with special polyester paint
- VHF Radio
- Flaps control
- Searchlight control
- Winch control
- Manual control of fire system and fuel cut-off
- Bilge pump indicator panel with sound and visual alarm
- IPS joystick control system
- Electronic engine control
- 16" GPS with sonar and engine interface

Galley

- Kitchen with upper cabinet and special polyester paint
- Side window on the counter with electric opening
- Corian® countertop with stainless steel sink
- Hot and cold water mixer
- 4-burner vitroceramic cooktop
- Stainless steel pot safety holder
- Microwave with grill
- 15.85 gallons refrigerator or freezer
- Exhaust fan
- Wooden floor
- Countertop with compartments
- Built-in trash can in the countertop
- Cutlery holder
- Cup and plate holder
- Wooden blind
- LED lighting with dimmer
- 220V socket
- 4-piece aquablock American set
- 2 dish towels + 1 hand towel personalized Sessa

Master Stateroom

- Double bed with three built-in drawers and storage underneath
- Two wooden cabinets with mirrored doors
- Stylized headboard
- 2 suspended storage compartments
- Fabric-covered bulkheads and ceiling
- Carpeted floor
- Leather-covered reading lights
- Wooden blinds
- LED lighting with dimmer
- USB socket
- 2 220V sockets
- 24" LED TV
- 1 pair of speakers
- MP3 radio with USB input
- Bedding with 2 pillows and covers plus personalized quilt
- Panoramic windows
- Roof hatch with blackout closure
- Exclusive WC
- Double compartment under the bed

Master Stateroom Head

- Cabinet with Corian® top, stainless steel sink with hot and cold water mixer

- Wooden overhead cabinets with mirrored doors
- Electric marine WC with teak cover
- Ceiling shower with diffuser, hot and cold water mixer, and soap dish
- Manual bidet shower
- Teak floor
- Acrylic shower box
- Egyptian cotton bath kit: 2 bath towels + 2 face towels + 1 sponge mesh mat
- Bathroom accessories (liquid soap dispenser and toothbrush/toothpaste holder)
- Stainless steel towel holder
- Wooden blind
- LED lighting
- 220V socket
- Air conditioning outlet
- Courtesy light
- Panoramic window with porthole
- Private access to the bow/master cabin

VIP Suite

- 2 single beds with rail for conversion to double bed
- Bedding with 2 pillows and covers plus personalized quilt
- Fabric-covered bulkheads and ceiling
- Stylized headboard with compartment and mirror
- Panoramic window with porthole
- Carpeted floor
- Wooden blind
- Reading lights
- LED lighting with dimmer
- 220V socket
- USB socket
- Wooden cabinet and mirrored door
- MP3 radio with USB input
- 1 pair of speakers

Guest Stateroom

- 2 single beds (optional F48-9206-Double bed complement)
- Bedding with 2 pillows and covers plus personalized quilt
- Fabric-covered bulkheads and ceiling
- Stylized headboard with mirror
- Panoramic window with porthole
- Carpeted floor
- Wooden blind
- Reading lights
- LED lighting with dimmer
- 220V socket
- USB socket

- Wooden cabinet and mirrored door
- MP3 radio with USB input
- 1 pair of speakers

Guest Head

- Cabinet with Corian® top, ceramic sink, and hot and cold water mixer
- Wooden overhead cabinets with mirrored doors
- Electric marine WC with teak cover
- Sliding bar shower with diffuser, hot and cold water mixer, and soap dish
- Teak floor
- Acrylic shower box
- Wooden blind
- Bathroom accessories (liquid soap dispenser and toothbrush/toothpaste holder)
- Stainless steel towel holder
- LED lighting
- 220V socket
- Air conditioning outlet
- Courtesy light
- Panoramic window with porthole
- Dual access from starboard cabin and corridor
- Egyptian cotton bath kit: 4 bath towels + 4 face towels + 1 sponge mesh mat

Flybridge

- Acrylic access door to the fly
- Front and side acrylic windshield with stainless steel frame
- Stainless steel guardrail and guard
- Fiberglass navigation equipment support (reaching light, flag holder, TV antenna)
- Fly cover awning with stainless steel structure, lighting, and 4 tension cables
- Dual pilot seat
- Courtesy lights
- 1 pair of speakers
- Foldable teak table
- Bar furniture with cover, cabinet, trash can, sink, and mixer
- Sofa with storage compartments underneath
- Solarium with courvin nautical mattress with water resistance, UV protection, and mold resistance
- Foldable backrest on solarium
- Stern maneuvering camera (for Garmin System)
- Drains with stainless steel finish

Flybridge Helm

- Nautical fabric steering wheel with angle adjustment (retractable)
- Electronic engine control
- Flaps control

- Winch control
- USB socket
- Set of various function keys
- VHF Radio
- Compass
- Depth sounder
- 16" GPS with sonar and engine interface
- IPS joystick control system
- Fiberglass panel with acrylic finish
- Cup holders
- Searchlight control
- Top command

Stern Platform

- Hydraulic teak-covered stern platform, with a capacity of up to 992 lbs
- Built-in emergency ladder in the stern
- Foldable stainless steel stern ladder with teak steps
- Stainless steel articulated ladder for cockpit access

Engine Room

- 2x VOLVO PENTA D8 - IPS 800 (600 HP - 882 kW)
- 2 fuel tanks of 199 gallons each with electric probe
- Tank balancing system with register
- Manual emergency valve in the fuel tank
- Water separators
- Horn type cornet
- Manual and automatic fire system for the machine room
- Flaps
- 2 automatic bilge pumps
- Water connection for machine room cleaning
- Machine room inspection lights

Electrical System

- 64,000 BTUs air conditioning (4 x 16,000 BTUs)
- 4 Batteries 105 Ah / 24V for engines
- 2 Batteries 200 Ah/12V for services
- 1 Battery 105 Ah / 12V for generator
- 90A automatic battery charger
- 230V shore power socket with connection cable
- Manual emergency battery switches
- Mase VS 12.5 KVa variable generator
- Wiring harness with antenna and 1,000W inverter

Upgrades

- Sport Painting (flybridge) - Polyester
- Wooden floor in Cabins
- LED underwater lights (3 units in stern)
- Electric Canopy in cockpit
- Foldable backrest on flybridge
- 2 triple fender holders + Sessa logo fender covers (2 units)
- Cup holder cabinet in the cockpit
- Window mosquito screens
- Additional double bed in Aft Cabin
- Full cockpit/aft enclosure - standard color: Cadet Grey
- 65L flybridge refrigerator
- Full flybridge enclosure
- Dock cable storage system
- Complete bedding set (All beds)
- Sunbathing kit with 2 towel mats and 2 custom Sessa marine cushions
- Camera kit for engine room, bow, and sequential
- Cockpit sound system upgrade with subwoofer, amplifier, and speakers
- Pair of stern spotlights
- Seakeeper 3 stabilizer
- Flybridge secret light panel
- Easy connect/ NMEA2000
- Volvo autopilot and joystick driving
- 2nd glass cockpit flybridge display 16"
- Garmin nautical charts
- Accessory kit for cruise control
- Accessory kit for single lever control

Disclaimer

The company offers the details of this vessel in good faith but cannot guarantee or warrant the accuracy of this information nor warrant the condition of the vessel. A buyer should instruct his agents, or his surveyors, to investigate such details as the buyer desires validated. This vessel is offered subject to prior sale, price change or withdrawal without notice.





























