



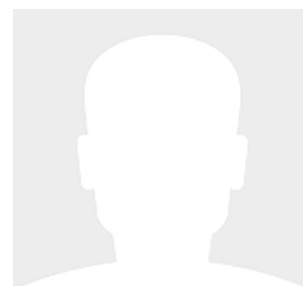
27' (8.23m) 2021 Blackfin 272CC
Palm Beach Gardens Florida United States



OVERVIEW

\$204,500

Manufacturer:	Blackfin	Hull Material:	Fiberglass
Engines:	2 Mercury	Cruise Speed:	Knots
Engine Model:	300XL Verado	Max Speed:	Knots
Engine HP:	300	Cabins/Heads:	/ 1
Beam:	8' 4"	Fuel Type:	Gas/Petrol
Max Draft:	3' 0"	Fuel:	180 G (681.37 L)
Water:	21 G (79.49 L)		



Data Sheet

Category: Center Consoles
Subcategory: Aft Cabin
Condition: Used
Model Year: 2021
Beam: 8'4" (2.54m)
Max Draft: 3' (0.91m)
Min Draft: 2' (0.61m)
LOA: 27' (8.23m)
Heads: 1

Knots
Knots
Fuel Type: Gas/Petrol
Hull Material: Fiberglass
Bridge Clearance: 9'

Dry Weight: 6500 lbs
Fuel Tank: 180 gal (681.37 liters)
Fresh Water: 21 gal (79.49 liters)
Holding Tank: 11 gal (41.64 liters)
Imported: No
HIN/IMO: BKFBA256I021
Stock #: B93159

Engines/Generators

Engine 1

Mercury
300XL Verado
Outboard
300HP
223.71KW
Fuel: Gas/Petrol
Hours: 133

Engine 2

Mercury
300XL Verado
Outboard
300HP
223.71KW
Fuel: Gas/Petrol
Hours: 133

Summary/Description

The 272CC is a verified battlewagon on the water.

The 272CC is a verified battlewagon on the water. The toughest seas and the mightiest waves are no match for this beast. It slices through the water with maximum finesse and keeps you and your crew secure and comfortable. Inside, you'll find everything you need for an amazing day on the water, such as a large freeboard, flip-down transom seating, and integrated command center. Whether you're off to distant fishing grounds, hopping between sand bars or just dropping anchor at your favorite waterfront hangout, the 272CC is designed to shine for you.

Key Features

1. **Performance:** Powered by twin Mercury Verado 300 HP engines, this vessel boasts remarkable speed and agility, making it perfect for cruising or angling.
2. **Spacious Deck:** With an expansive deck layout, there's ample space for fishing, lounging, or entertaining guests. The thoughtful design includes comfortable seating, a convertible bow lounge, and strategically placed rod holders.
3. **Technology:** Equipped with state-of-the-art navigation systems, a touchscreen multifunction display, and integrated Bluetooth connectivity, this boat offers seamless control and entertainment options.
4. **Comfort and Style:** The plush upholstery, ergonomic design, and attention to detail in every aspect of the interior make for a comfortable and stylish onboard experience.
5. **Storage and Convenience:** Ample storage compartments ensure you have space for all your gear and personal belongings, while convenient features like a freshwater shower and integrated cooler enhance your time on the water.
6. **Durability:** Constructed with high-quality materials and a robust hull design, the Blackfin 272CC guarantees durability and reliability in various sea conditions.

Additional Options

- 5 year Blackfin premium protection
- Mercury Gold warranty
- Hull Bottom; Arctic White
- Cockpit Table with Sea Deck Inlay, Pedestal with vertical and side mount base
- Hull Side; Titanium
- Hardtop Underside; Titanium
- Hardtop Rod Holders (6)
- Casting Platform
- Dual Garmin 8612 GPS/ Chartplotter
- B60 Transducer
- White Twin 300XL Verado
- Premium sound package; (6) 7.7" JL speakers, (2) Subwoofers, LED speaker lights
- RGB LED underwater lights
- Macerator with overboard discharge
- Helm Sea Dek floor pad

Disclaimer

The company offers the details of this vessel in good faith but cannot guarantee or warrant the accuracy of this information nor warrant the condition of the vessel. A buyer should instruct his agents, or his surveyors, to investigate such details as the buyer desires validated. This vessel is offered subject to prior sale, price change or withdrawal without notice.

















