



# ESCAPADE

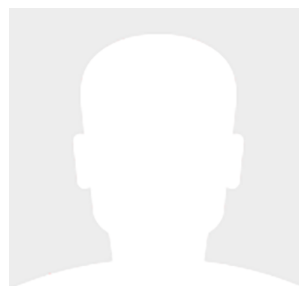
32' (9.75m) 2004 Tiara Yachts  
Palm Beach Gardens Florida United States



## OVERVIEW

**\$195,000**

Manufacturer:	Tiara Yachts		
Engines:	2 Crusader	Hull Material:	Fiberglass
Engine Model:	8.1 MPI	Cruise Speed:	
Engine HP:	385	Max Speed:	
Beam:	13' 0"	Cabins/Heads:	/ 1
Max Draft:	3' 0"	Fuel Type:	Gas/Petrol
Water:	38 G (143.85 L)	Fuel:	256 G (969.06 L)



## Data Sheet

Category: Saltwater Fishing  
Condition: Used  
Model Year: 2004  
Beam: 13' (3.96m)  
Max Draft: 3' (0.91m)  
LOA: 32' (9.75m)  
Heads: 1

Fuel Type: Gas/Petrol  
Hull Material: Fiberglass

Dry Weight: 12500 lbs  
Fuel Tank: 256 gal (969.06 liters)  
Fresh Water: 38 gal (143.85 liters)  
Holding Tank: 20 gal (75.71 liters)  
HIN/IMO: SSUR3018K304  
Stock #: B92165

## Engines/Generators

### Engine 1

Crusader  
8.1 MPI  
Inboard  
385HP  
287.09KW  
Fuel: Gas/Petrol  
Hours: 385

### Engine 2

Crusader  
8.1 MPI  
Inboard  
385HP  
287.09KW  
Fuel: Gas/Petrol  
Hours: 386

## Summary/Description

This Tiara 3200 is a one-owner boat that has been meticulously maintained and updated throughout its life. In 2019, the boat was repowered with new twin Crusader 8.1 engines that have only 386 hours on them. The batteries were also replaced in 2022. She is in excellent condition inside and out.

This Tiara 3200 is a one-owner boat that has been meticulously maintained and updated throughout its life. In 2019, the boat was repowered with new twin Crusader 8.1 engines that have only 386 hours on them. The batteries were also replaced in 2022. She is in excellent condition inside and out.

This Tiara 3200 Cruising Hardtop is a great example of a well-maintained and updated boat. With its powerful new engines, advanced electronics, and luxurious amenities, it is ready for cruising, fishing, and entertaining in style. Contact the listing broker to schedule a viewing!

## Additional Information

### HULL, DECK, AND UPPER COCKPIT

- Molded-in hullside engine room ventilation
- Bennett Marine® 12V hydraulic recessed trim tabs
- Six (6) S.S. oval custom opening port lights with screens
- Three (3) Bomar® extruded aluminum forward deck hatches with adjusters and built-in Ocean Air® screens and privacy covers
- Molded-in fiberglass bow pulpit with S.S. roller
- One-piece welded, 316L S.S. 1" bow rail with pulpit, staff, and Tiara burgee
- Flush forward anchor rode locker with overboard drain
- Automatic rope/chain anchor windlass system with operation from foredeck foot pedal and remote switch at helm. Includes one (1) 8" S.S. foredeck cleat, 30' chain rode, 200' rope rode, and Delta® 22 lb. galvanized anchor.
- Black rubrail with 316L S.S. cap
- Six (6) 10" S.S. cleats for lines
- Tiara custom composite windshield frame with tempered safety glass, safety handrails, opening center section, and Imtra® windshield wiper system (three (3) washers/wipers)
- Tiara hinged helm console with full flush mount electronics capability, two (2) drink holders, 12v outlet, and 20" S.S. destroyer steering wheel
- Helm back-to-back seat locker with forward seat and aft-facing seat. Forward seat has power actuator for fore and aft

adjustment.

- Centerline entry to salon with acrylic sliding companionway door, lock, screen door, and privacy cover
- Portside navigation center including chart storage with white acrylic lid and drink holders
- Port curved companion lounge with jump seat and cooler below
- TV jack/outlet
- Upper cockpit cool air helm blower
- 120V GFI outlet
- Drop-down engine room access hatch from the upper cockpit
- Weather covers for helm console and all cockpit furniture
- Fresh white gelcoat hull and deck
- Black gelcoat bootline with gold accent
- Hull constructed with a gelcoat outer layer, balsa-cored hullsides, and hand-laid fiberglass using a special blended, premium resin
- Deck constructed with a gelcoat outer layer, balsa coring, and hand-laid fiberglass using a premium resin
- Tiara custom diamond pattern non-skid deck and cockpit surfaces
- Wood and foam core stringers, encapsulated by hand-laid fiberglass, are integrated to hull
- Gelcoated bilge
- Bronze seacocks on all underwater thru-hull fittings

#### **LOWER COCKPIT**

- Molded-in steps to deck walkways, port, and starboard
- Fiberglass covering boards
- Cockpit coaming bolsters
- Two (2) corner chrome bronze hawse pipes
- Imtra® cockpit courtesy lighting
- Cockpit shower, hot and cold water
- Fresh water washdown outlet with S.S. fittings and 25 ft. coiled blue hose
- Self-draining cockpit
- Two (2) flush floor storage boxes
- Aluminum backing plate, 24" x 24", laminated in cockpit floor, port side of fuel access hatch

- Molded-in transom door and gate
- Transom fold-down lounge

## **INTERIOR GROUP**

- Mold and mildew-resistant vinyl hull and headliner treatment
- Teak interior
- Teak hardwood floor
- Cable TV/phone outlet
- 120V outlets throughout
- 12V lighting

## **SALON**

- Sharp® TV
- 12V DVD player
- Marine Air Systems® 16,000 BTU air conditioner with reverse cycle heat

Fiberglass companionway steps with teak hardwood tread and hinged storage compartments below

- S.S. companionway handrail
- Clarion® AM/FM/CD stereo with remote, amp, subwoofer, two (2) interior speakers, and four (4) cockpit speakers. Includes Clarion® iPod® interface.
- Lounge/dinette seating to starboard with storage below and high-gloss teak/birdseye maple table. Table converts to double lower berth with hi-lo pedestal (includes berth filler cushion). Dinette backrest converts to single pullman upper berth.
- Overhead storage cabinets above dinette, starboard side

## **HEAD**

Full frame wood entry door

- Full fiberglass head with shower sump pump and shower curtain
- Corian® countertop w/integrated sink
- Mirrored vanity above sink
- Storage compartment below sink
- Vacuflush® toilet
- Exhaust fan

## **INSTRUMENTATION, EQUIPMENT**

- Tiara custom 12V and 120V master distribution panel
- Two (2) 120V 30 amp 65 ft. dockside power cords with adapter
- Cable TV/phone inlet and cabin outlets with 65 ft. dockside power cord
- TV and AM/FM antennas
- Victron® battery charger (1), 50 amp
- Two bank 12V battery system with batteries and battery switches (two (2) engine batteries and two (2) house batteries)
- Amp meters, AC and DC • Electrical bonding system
- Reverse polarity indicators
- Zincs - transom, trim tabs, and shafts
- Teleflex® twin mechanical engine controls
- Teleflex® hydraulic steering system
- Bronze axe head rudders and struts
- Aquamet® S.S. prop shafts, 1 1/2" gas and 1 3/4" diesel
- Water-cooled shaft logs with PSS® dripless shaft seal
- Two (2) Nibral® propellers
- Engine instrumentation: Dual VDO® tachometers w/ hour meters, voltage gauges, fuel gauge, temperature gauges, engine oil pressure gauges, and rudder angle indicator.
- Ritchie® SuperSport SS-2000 compass
- High output alternators: 100 amps each for Crusader® engines,
- Engine room acoustical insulation
- Engine hatch actuator
- Two (2) Racor® fuel filters/water separators
- Two (2) raw-water intake strainers
- Vibration mounts for engines
- Plate-mounted, thru-bolted engine system
- Two (2) bilge blowers, 250 CFM each
- Three (3) automatic/manual bilge pumps with monitors at the helm, 2000 GPH each: One (1) forward, one (1) mid, one (1) aft
- One (1) composite fuel tank, 256 gallons, with electric gauge and fuel shut-off valve on top of tank

- Dockside water inlet
- One (1) freshwater tank, 38 gallons
- Fresh water pressure system with Shurflo® variable speed pump, five (5) GPM
- One (1) holding tank, 20 gallons
- Fresh water tank/holding tank monitor
- One (1) water heater with exchanger, six (6) gallons
- Air horn
- FE-241 agent automatic/manual fire extinguisher system in engine room (HFC-227 agent for CE)
- Three (3) handheld fire extinguishers
- Two (2) carbon monoxide detectors
- Two (2) smoke detectors
- Six (6) 5/8" x 30' black dock lines
- Four (4) Tiara life vests (domestic boats only)
- USCG safety and medical kit • USCG/international navigation lighting
- NMMA certified using ABYC standards

## Manufacturer Provided Description

The 3200 Open has been built with the experience and demanding standards. The brand-new hull comes in at 1 foot longer and 1 full foot wider than her predecessor. The extra foot has added significant features and benefits customers expect from Tiara Yachts. The versatile cockpit adapts easily to fishing or cruising functions and the command bridge, just one step up, provides lots of seating and great visibility. Interior amenities provide the comfort of home, and the flawless cabinetry conceals valuable storage and well thought-out designs. Both Crusader 8.1L MPI gas power plants, and Volvo Penta's revolutionary new D-6 diesel engines are available, providing excellent performance tailored to your needs.

## Disclaimer

The company offers the details of this vessel in good faith but cannot guarantee or warrant the accuracy of this information nor warrant the condition of the vessel. A buyer should instruct his agents, or his surveyors, to investigate such details as the buyer desires validated. This vessel is offered subject to prior sale, price change or withdrawal without notice.





















































