



## ASCENTE

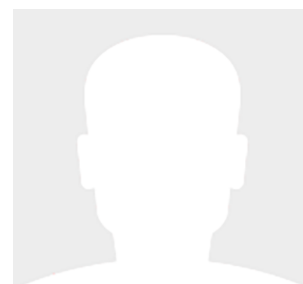
112' (34.14m) 1994 Custom Westport Hull 7600 Series  
Vancouver Canada



### OVERVIEW

**\$3,250,000**

|               |                    |                |                    |
|---------------|--------------------|----------------|--------------------|
| Manufacturer: | Custom             | Hull Material: | Fiberglass         |
| Engines:      | 2 Volvo Penta      | Cruise Speed:  | 10 Knots           |
| Engine Model: | TAMD162A           | Max Speed:     | 15 Knots           |
| Engine HP:    | 0                  | Cabins/Heads:  | 5 /                |
| Beam:         | 25' 0"             | Fuel Type:     | Diesel             |
| Max Draft:    | 6' 0"              | Fuel:          | 2500 G (9463.52 L) |
| Water:        | 1500 G (5678.12 L) |                |                    |



# FRASER

## Data Sheet

Category: Motor Yachts  
Condition: Used  
Model Year: 1994  
Beam: 25' (7.62m)  
Max Draft: 6' (1.83m)  
LOA: 112' (34.14m)  
Cabins: 5  
Sleeps: 12

Crew Cabins: 2  
Crew Sleeps: 6  
Maximum Speed: 15 Knots  
Cruise Speed: 10 Knots  
Range NM: 2000  
Fuel Type: Diesel  
Hull Material: Fiberglass

Gross Tonnage: 248  
Displacement: 97  
Stabilizers: Standard  
Stabilizer Brand: Key Power  
Fuel Tank: 2500 gal (9463.52 liters)  
Fresh Water: 1500 gal (5678.12 liters)  
Holding Tank: 350 gal (1324.89 liters)  
Builder: Westport  
HIN/IMO: NA

## Engines/Generators

### Engine 1

Volvo Penta  
TAMD162A  
Fuel: Diesel  
Hours: 9404

### Engine 2

Volvo Penta  
TAMD162A  
Fuel: Diesel  
Hours: 9930

### Generator 1

Quiet Fischer Panda  
16KW  
Hours: 6092

### Generator 2

Isuzu  
35KW  
Hours: 1780

# FRASER

## Summary/Description

"This luxury expedition yacht reveals an outstanding build and design pedigree. In a world of reproductions, this is a vessel that celebrates unparalleled advancements across all areas. ASCENTE'S distinctive features, newly refinished contemporary interior, 2-person operation, low operating costs, a

"This luxury expedition yacht reveals an outstanding build and design pedigree. In a world of reproductions, this is a vessel that celebrates unparalleled advancements across all areas. ASCENTE'S distinctive features, newly refinished contemporary interior, low operating costs, and proven charter potential offers one of the most exclusive investment opportunities today."

## FULL SPECIFICATIONS

### FEATURES AT A GLANCE

- Westport Hull 7600 Series 112'
- Interior and exterior design by top naval architect Gregory Marshall
- Unrivaled operational costs
- Interior volume comparable to 135'-150' yachts
- Spacious 7 cabin layout
- Meticulous condition throughout
- Robust seagoing capability
- Ideal family, expedition, and corporate yacht
- Proven charter potential

### CLASSIFICATION

Flag: Canada

Port of Registry: Vancouver

Official Registration: Canada 815163

Home Port: Vancouver

### SQUARE METERS

---

Matthew Martin    matthew.martin@fraseryachts.com

---

1-619-225-4800

# FRASER

TOTAL EXTERIOR DECKS: 548 M<sup>2</sup> 1800 FT<sup>2</sup>

TOTAL INTERIOR: 1158 M<sup>2</sup> 3800 FT<sup>2</sup>

## OVERVIEW

### UNIQUE DESIGN & LAYOUT

Cutting edge exterior design by Greg Marshall Stunning Alexseal blue metallic hull

Extensive interior volume comparable to 135-150ft yachts

23 feet full beam salon

Open, modern layout maximizes views throughout Separate stairways for crew, guest, & master staterooms

Huge Dining area easily accommodates 12 at custom floating table Expansive, functional galley for professional caterers & loved by all chefs Two in-&-out galley doors allow for fluid event catering

Huge pantry, laundry, & crew quarters with direct galley access Brand new contemporary interior finishes throughout

4 VIP Staterooms plus master with grand feel

Light control dimmers throughout main deck, sky deck & exterior

## ACCOMMODATIONS

### OWNER STATEROOM

Located aft for privacy and distant from anchor Full beam with large windows port and starboard Rich black walnut wood finishes

Large, opening portholes Luxurious Jacuzzi tub for two Frameless glass shower

Thermostatic/pressure balanced Riobel shower fixtures Fogless lighted mirror for shower & vanity

Beautiful glass hardware

Very Large his/hers dressers & wardrobes

Self-closing & auto-lighted wardrobes with cedar lining Electric fireplace

Inviting desk/vanity

USB charging stations at either bedside

---

Matthew Martin    [matthew.martin@fraseryachts.com](mailto:matthew.martin@fraseryachts.com)

---

1-619-225-4800

# FRASER

## 4 VIP STATEROOMS

Open & spacious layout with enclosed WC Electric fireplaces provide ambiance &/or heat

Extensive space including 8 drawer dressers, luggage storage, full-length closets Large, wide opening port holes with removable screens

## CREW QUARTERS

Comfortably sleeps 6-7 crew

Each stateroom with double birth & optional single bunk

## DINING

Large floating & custom black walnut dining table, comfortably seats 12 Luminous & contemporary chandelier

Two floating built-in buffet cabinets with embarcadero marble Built in 100-bottle wine rack

Built in wine & beer coolers Adjustable liquor storage drawers

Custom folding bar for large parties stored in pantry Hidden powered presentation screen

Exceptional space for board meetings Striking day head

## SKYLounge/OFFICE/MEDIA ROOM

Live edge desk with ample work & shelving space 9 large windows highlight a 300-degree views 56inch Auto lift TV with Denon surround system Electric fireplace

Large L-shaped sofa with air mattress hide-a-bed, easily converts to 6th stateroom

Day head adjacent to bridge

## SUNDECK

4-person hot tub

Two L-shaped settees with seating for 9

Three triangular shaped sun sails provide new modern style and shade

Large boat deck with two 1500-pound port & starboard Davits to easily launch 14-foot Rendova with 60 HP Yamaha outboard, two Seadoo Sparks (all included).

2 x 16 person DSS life rafts, serviced annually

# FRASER

## SKYDECK

5' long propane fire pit

Four-piece outdoor patio set with Sunbrella fabrics, covers & hidden propane storage Ample gym space

## AFT DECK

32" x 20" DCS propane BBQ with large table extension Two round fire pits with glass & granite tops

Custom teardrop tabletops convert fire pits to 14-place fireside dining Spacious day head

Fully enclosable aft deck with stainless steel canopy Removable indoor/outdoor carpet

Very expansive, full beam deck for lounging or dining

## BRIDGE

Full beam

Enclosed Port & Starboard control stations Bow to stern visibility

Unlimited visibility with forward slopping windows

Unique design minimizes glare, fading/deterioration of woods, vinyl, & monitors Seating for 10

Perfect space for social meals & sea life views while underway Vast chart counter & drawers

300-degree Captain's chair visibility

Clean, modern electronics with 35" ultra-wide screen & 2 x 25" monitors Comprehensive Deckhand & Stew guidelines including operation manuals SALON:

Open concept allows for tailored layouts & designs

Wrap around windows highlight the 300-degree unobstructed views throughout Custom power blinds

3-stool bar with acrylic top & embarcadero marble

4-seat dining/games/card table Discrete entry coat locker

Low maintenance vinyl plank simulated wood floors (black walnut) Smart phone controlled stereo system

Custom painted speakers throughout

## LAZARETTE/WORKSHOP/EQUIPMENT STORAGE

Full beam

# FRASER

Extensive storage offering ample space for easy access/organization of goods and parts

Adjustable wall shelving system

## CAPACITIES

Gross Tonnage: 247

Net Tonnage: 179

Displacement Tonnage 97

Fuel Capacity: 9463 Liters 2500 Gallons

Fresh Water Capacity: 5678 Liters 1500 Gallons

Black Water: 1324 Liters 350 Gallons

## MAIN MACHINERY

Main Engines: Volvo Penta TAMD162A 6 cyl. turbo charged diesel engines

Engine Hours: Port: 9404 Both Engines partially rebuilt at approx. 5,000

hours

Starboard: 9930

## GENERATORS & ELECTRICITY

Generators: Quiet Fischer Panda 16kw (2017)

Isuzu 35kw Main Generator with Sound Shield (1994)

Generator Hours: Fischer Panda: 6092

Isuzu: 1780

Shore Power: 100 Amp Single Phase

Shore Power Transformer: Tierney

Batteries: 4 x AGM batteries

---

Matthew Martin    [matthew.martin@fraseryachts.com](mailto:matthew.martin@fraseryachts.com)

---

1-619-225-4800

## ENGINE ROOM EQUIPMENT

Mastervolt Inverter - Boat can operate overnight without generators running Three battery chargers

105,000 BTU Webasco Heating System Village Marine 80gph Water maker

VITAPUR Water purification system (charcoal & UV) Headhunter water pump plus Mastercraft backup pump Tierney Transformer

## AUXILIARY MACHINERY

Bow Thruster: Hydraulic

Stabilizers: KEYPOWER Fin type stabilizers

## NAVIGATION & COMMUNICATION SYSTEMS

FURUNO NavNet TZtouch navigation & radar system Nobeltech navigation with Lenovo PC

Maretron system with digital engine and tank gauges ComNav Autopilot

FURUNO Depth Sounder (2) bow & stern

Surveillance System - 2 transom cameras, 1 engine room camera, 1 anchor camera One Simrad RS35 VHF & one Simrad RS12 VHF

3 station Micro Commander Controllers

Key Power hydraulic stabilizers, bow thruster, & anchors (500 lbs. each)

## ENTERTAINMENT, AUDIO/VISUAL AND IT SYSTEMS



# FRASER

Starlink Satellite Internet

56-inch Auto Lift TV with Denon surround system Smart phone controlled stereo system

Custom painted speakers throughout Hidden powered presentation screen

## GALLEY & LAUNDRY EQUIPMENT

### GALLEY

Large open layout with great flow

Large windows with great views port & starboard

Elegant overhead light fixtures

Abundant storage space for the chef

Electrolux 18.6ft3 freezer & 18.6ft3 fridge Bosch induction stovetop

Jenn-Air combination Microwave/Wall Oven with Multimode Convection Oven Jenn-Air Espresso machine

Bosch dishwasher Broan trash compactor

InSinkErator food waste disposer Wide Island/coffee bar seats two Five pop up electrical outlets Widespread & gorgeous lighting

### LAUNDRY

Modern Samsung washer/dryer Extensive counter space & storage

Stylish Crew Dinette with custom & height adjustable wood table 22 x 44-inch Chest Freezer

## TENDERS & TOYS

## WATERSPORTS & RECREATION

2 x Seadoo Sparks

2 x Starboard Paddle boards 2 x iRocker Paddle Boards

2 x Delta 12 AR one-person Kayaks 2 x Delta 12s one-person Kayaks Dry & wetsuits

## ADDITIONAL EQUIPMENT

2 x Starboard Paddle boards 2 x Delta Kayaks

2 x complete scuba dive setups including dry & wet suits plus weights 1x Honda Fire Pump

## SPECIAL FEATURES

4-person hot tub

Propane BBQ with table extension

Two round fire pits with glass & granite tops

Custom teardrop tabletops convert fire pits to 14-place fireside dining

5' long propane fire pit on Skydeck

3 triangular shaped sun sails for shade on Sundeck Vitapur Water purification system (charcoal & UV)

## EXCLUSIONS

Personal items are not included in the sale of the vessel. A full list of exclusions will be provided on request.

# FRASER

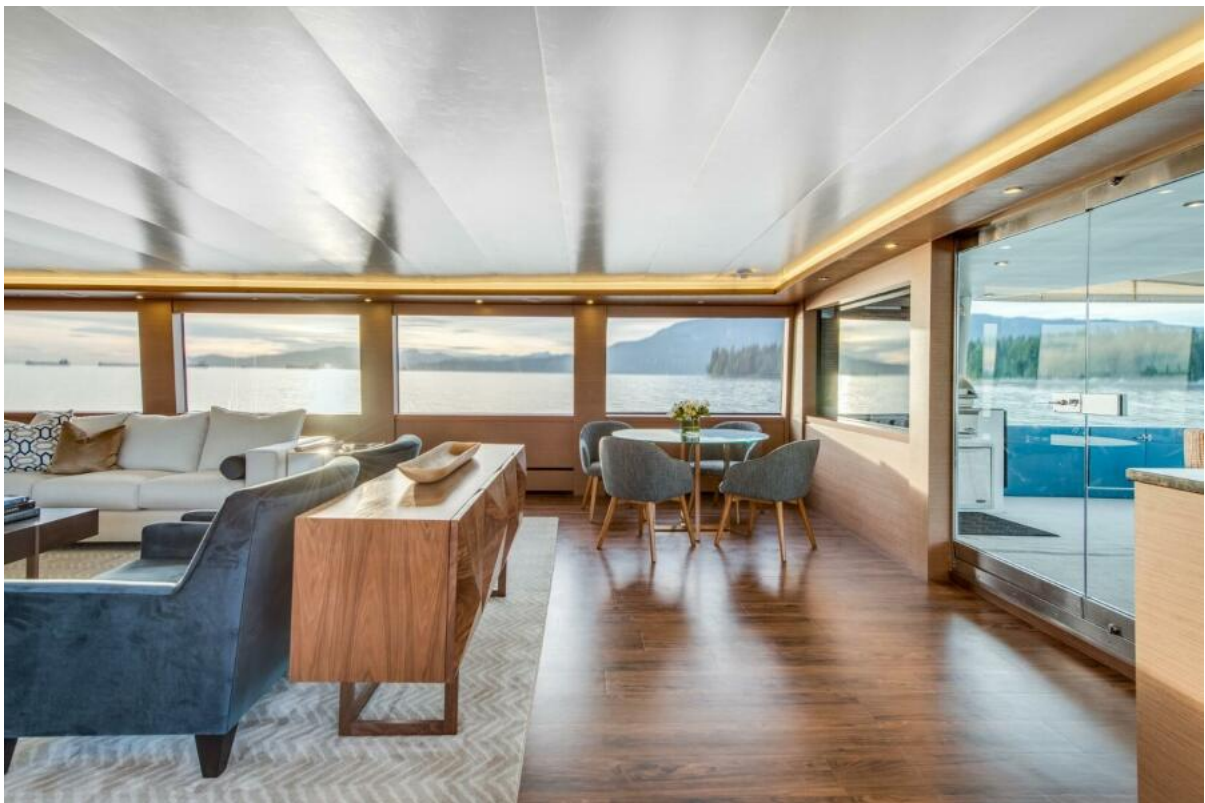


# FRASER





# FRASER



# FRASER





# FRASER



# FRASER





# FRASER



# FRASER



# FRASER





# FRASER



# FRASER





# FRASER



# FRASER





# FRASER





# FRASER



# FRASER

