



TROUBADOUR

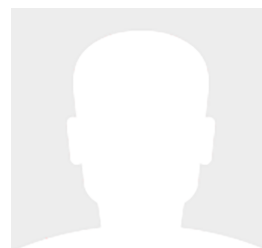
65' (19.81m) 2015 Sea Ray L650
Vancouver British Columbia Canada



OVERVIEW

Manufacturer:	Sea Ray	Hull Material:	Fiberglass
Engines:	2 CATERPILLAR	Cruise Speed:	24 Knots
Engine Model:	C18	Max Speed:	33 Knots
Engine HP:	0	Cabins/Heads:	4 / 4
Beam:	16' 11"	Fuel Type:	Diesel
Max Draft:	4' 10"	Fuel:	1030 G (3898.97 L)
Water:	280 G (1059.91 L)		

\$1,450,000



Matthew Martin matthew.martin@fraseryachts.com

1-619-225-4800

FRASER

Data Sheet

Category: Motor Yachts
Condition: Used
Model Year: 2015
Refit Year: 2023
Beam: 16'11" (5.16m)
Max Draft: 4' 10" (1.47m)
LOA: 64' 11" (19.79m)
Cabins: 4
Sleeps: 8
Heads: 4

Crew Cabins: 1
Crew Sleeps: 2
Maximum Speed: 33 Knots
Cruise Speed: 24 Knots
Fuel Type: Diesel
Hull Material: Fiberglass

Gross Tonnage: 35
Bow Thruster: Yes
Stern Thruster: Yes
Fuel Tank: 1030 gal (3898.97 liters)
Fresh Water: 280 gal (1059.91 liters)
Holding Tank: 100 gal (378.54 liters)
Builder: Sea Ray
HIN/IMO: SERP8386F415

Engines/Generators

Engine 1

CATERPILLAR
C18
Fuel: Diesel
Hours: 722

Engine 2

CATERPILLAR
C18
Fuel: Diesel
Hours: 723

Generator 1

Onan
27.50KW

FRASER

Summary/Description

The L650 features a spacious cockpit area with comfortable seating, allowing for relaxing evenings under the stars or lively gatherings with friends and family. Step inside the yacht, and you will be greeted by a luxurious interior that showcases craftsmanship and attention to detail. The salon boasts

FULL SPECIFICATIONS

MAIN CHARACTERISTICS

Name: TROUBADOUR

Type: Power Yacht

Builder: Sea Ray

Year: 2015

Hull No: US-SERP8386F415

Yacht Model: L650 Hardtop

LOA (M/FT): 19.79 M 64'11"

Beam Overall (M/FT): 5.16 M 16'11"

Draft (Full Load) (M/FT): 1.47 M 4'10"

Gross Tonnage: 35 Tons

Hull Material: Fiberglass

Hull Configuration: V shape

Deck: Teak

Flag: Canada

Main Engines: CAT 18 2/1,100hp ACERTs

Speeds: 33 knots Max

24 Knots Cruising

16 knots Economical

Range: 273nm @ (mid 20's) knots, or 546nm @ 12 knots Guest Accommodation: Accommodations for 8 guests in 4 staterooms Crew Accommodation: Two in the aft cabin

CLASSIFICATION

Flag: Canada

Port of Registry: Richmond, BC

Official Registration: BC4669610

Home Port: Vancouver, Canada

ACCOMMODATIONS

OVERVIEW:

The L650 features a spacious cockpit area with comfortable seating, allowing for relaxing evenings under the stars or lively gatherings with friends and family.

Step inside the yacht, and you will be greeted by a luxurious interior that showcases craftsmanship and attention to detail. The salon boasts high-quality finishes, plush seating, and large windows that offer panoramic views of the surrounding waters.

The yacht features four, beautifully appointed staterooms, each with its own en-suite head. The master suite takes center stage, offering a spacious retreat with a comfortable king-size bed, ample storage space, and a private head complete with high-end fixtures and finishes.

LOWER DECK:

Master stateroom (double bed) with head and shower Forward stateroom (double bed) with head and shower Port stateroom 2 x single beds with head and shower Starboard stateroom 2 x single beds.

FRASER

MAIN DECK:

Open Galley Indoor dining table

Lounge area and designer coffee table Exterior dining table and seating area

CREW ACCOMODATION (Lazarette)

2 x single beds for crew with head and shower

CONSTRUCTION

Hull Material: Fiberglass/GRP

Decks: Teak decks

Paint:

Hull: Vinyl Wrap- 3M Gloss Midnight Blue

Superstructure: Gelcoat white and black

CAPACITIES

FRASER

Gross Tonnage: 35 GT

Net Tonnage: 75,270 lbs

Fuel Capacity: 3,900Liters 1,030Gallons

Fresh Water Capacity: 1,060 Liters 280 Gallons

Water Makers: 64/hour 17/hour

Holding Tank: 379 Liters 100 gallons

Speed

Maximum: 33 118 Consumption p/h 241.5 Range 2300 RPM

Cruising: 24 90 Consumption p/h 275.5 Range 1900 RPM

Economical: 9.4 15 Consumption p/h 583.1 Range 1000 RPM

MAIN MACHINERY

Main Engines: 2X CAT C18 Engines

Engine Hours: Port: 722

Starboard:723

Propulsion Type: Inboard diesel engines with a conventional prop shaft in a straight transmission system

Engines Exhaust System: Raw water-cooling system

Matthew Martin matthew.martin@fraseryachts.com

1-619-225-4800

FRASER

Engine Ventilation: Blowers yes

GENERATORS & ELECTRICITY

110/240 VAC

Gen 27.5KW Cummins Onan Genset 1157

2 X 125/250V/50A

4 X 8 D-AGM batteries

2x Odyssey AGM- 400FT

2x 4-AGM batteries

Output/Electricity: 110/240 VAC

Generators: Gen 27.5KW Cummins Onan Genset

Generator Hours: 1157

Shore Power: 2 X 125/250V/50A

Batteries: 4 X 8 D-AGM batteries, 2x Odyssey AGM- 400FT, 2x 4-AGM batteries

AUXILIARY MACHINERY

Bow Thruster: yes

Stern Thruster: yes

Stabilizers: No

Under Water Lights: Yes

Helm/Wing Station Controls: Helm and one at the aft starboard side

Fuel Filters: Dual Racor fuel filters each side in engine room

Matthew Martin matthew.martin@fraseryachts.com

1-619-225-4800

Fresh Water Maker: Spectra Watermaker Newport 400 MKII

Sanitary Vacuum System: Vacuflush system with 4 x Vacuum generators

Air Conditioning: Yes (Cruise Air by Dometic)

Engine Room Ventilation: Yes

NAVIGATION & COMMUNICATION SYSTEMS

NAVIGATION SYSTEMS

Navigation Bridge:

Monitors: 18" Raymarine screens x2

Radar: Raymarine

Chart Plotter: Raymarine

Magnetic Compass: Yes

Auto Pilot: Yes

Depth Sounder: Yes

GPS: Yes

AIS: Yes

Horn: Yes

Search Lights: Yes

Night Vision Camera: Yes (FLIR camera installed 2023)

Bridge Navigation Watch Alarm: Yes

FRASER

Weather Fax: Yes

COMMUNICATION SYSTEMS

Portable VHF: Yes 2X

DECK MACHINERY & EQUIPMENT

Anchors: Delta style anchor chute stainless steel

Anchor washdown spigot w/ hose

Anchor Chains: Windlass chain w/foot switches 300ft

Swimming Ladder: Yes

SAFETY, SECURITY, & FIRE FIGHTING EQUIPMENT

Fixed Firefighting System: Manual fire system with pin / automatic as well

Firefighting Equipment: 2- fire extinguishers

Gas Detection: Carbon Monoxide monitor

Smoke Detection: Yes

Fire Alarm: Yes

Alarms: Alerts on panel

MOB Boat: Yes

Lifejackets: 20 total lifejackets

SART: Yes

Flares and Signals: Equipped

Medical Equipment: 2- First aid kits

ENTERTAINMENT, AUDIO/VISUAL AND IT SYSTEMS

Video Equipment: 3 cameras

WIFI: Starlink

GALLEY & LAUNDRY EQUIPMENT

MAIN GALLEY EQUIPMENT

Cooking Equipment: Kenyon 3 burner cooktop black

Refrigeration/Freezer: 2- Vitrifrigo Fridges

2- Vitrifrigo Freezers

Dishwasher: Vesta

Microwave: Cuisinart convection microwave oven and grill

Other: 1- Wine Cooler

TENDERS & TOYS

Jet Ski: 1- 2022 Seadoo Spark Trixx

Toys: 1- Inflatable dock 8ft x 8ft

1- 2 Person tube : Connelly Destroyer 2

1- Wakeboard: O'Brien

2- Deck chairs

CAPITAL IMPROVEMENTS

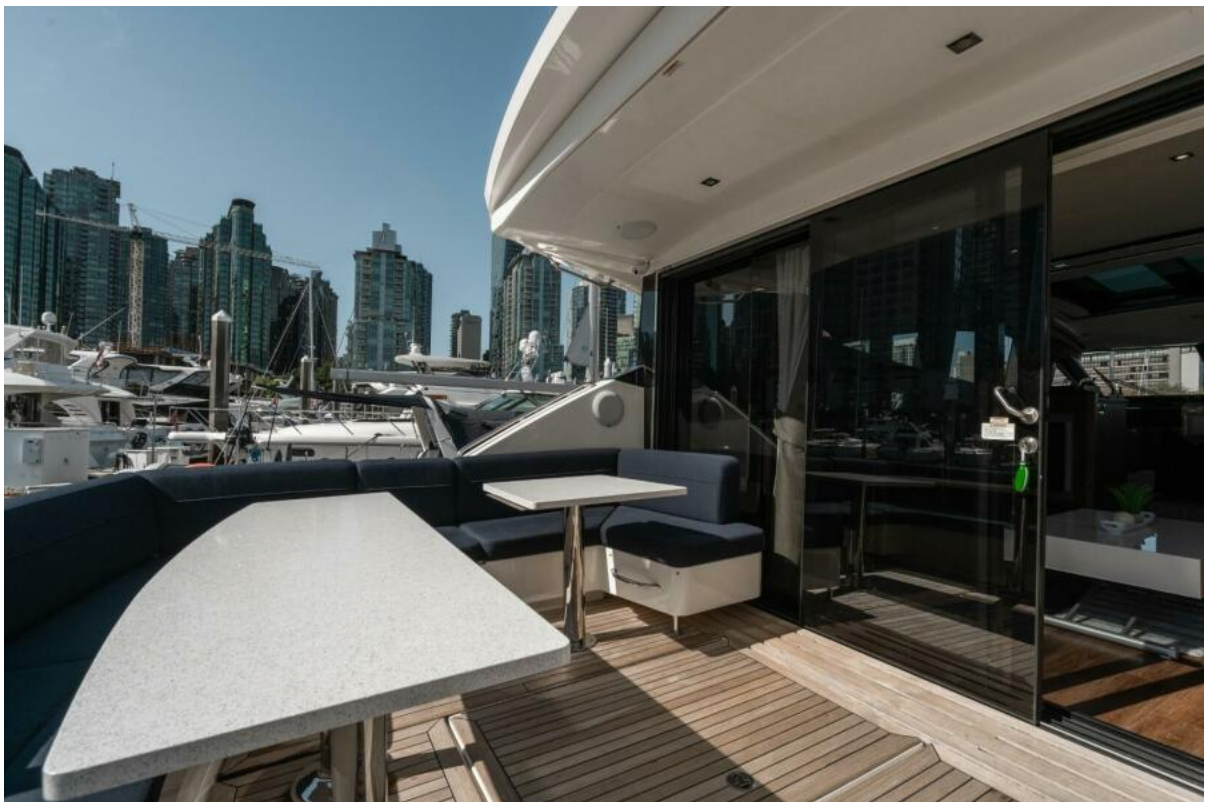
FRASER

2023

Exterior:

- Overhead outdoor awning in forward seating area
- 2023 FUSION sounds system installed for exterior
- New marble aft deck table installed with additional table and connector piece to enable more space for dining
- All new upholstery and canvas covers made Interior:
- Complete interior upgrade in the main salon, galley and helm area
- New wood floors installed
- New bar installed with additional storage
- Retractable coffee and cocktail station installed
- New large marble table
- New designer coffee table
- All new upholstery and cushions through the whole boat
- New linen for every stateroom
- Electric bidet added to master head Engineering:
- New batteries
- New battery charger
- Complete service on CAT engines and generator
- New stainless steel anchor foot pedals.
- New FLIR infrared camera

FRASER



FRASER



FRASER



FRASER



FRASER



FRASER



FRASER





FRASER



FRASER



FRASER



FRASER



FRASER

