



Tartan 365 8

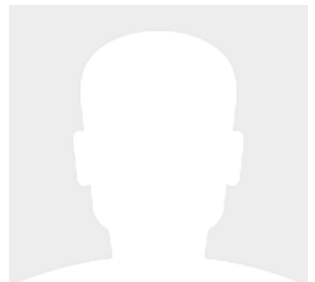
36' (10.97m) 2024 Tartan 365
Annapolis Maryland United States



OVERVIEW

\$494,291

Manufacturer:	Tartan	Hull Material:	Fiberglass
Engines:	1 Volvo Penta	Cruise Speed:	
Engine Model:	D1 - 27	Max Speed:	
Engine HP:	27	Cabins/Heads:	2 / 1
Beam:	12' 0"	Fuel Type:	Diesel
Max Draft:	4' 11"	Fuel:	35 G (132.49 L)
Water:	65 G (246.05 L)		



Data Sheet

Category: Cruisers

Condition: New

Model Year: 2024

Documented Year: 2024

Beam: 12' (3.66m)

Max Draft: 4' 11" (1.50m)

LOA: 36' 6" (11.13m)

LWL: 31' 1" (9.47m)

Cabins: 2

Sleeps: 6

Double Berths: 3

Heads: 1

Fuel Type: Diesel

Hull Material: Fiberglass

Hull Shape: Monohull

Hull Finish: PPG Paint

Hull Warranty: 10 years

Bridge Clearance: 55'

Displacement: 13750 Fuel Tank: 35 gal
(132.49 liters)

Fresh Water: 65 gal (246.05 liters)

Holding Tank: 20 gal (75.71 liters)

Builder: Tartan Yachts

Designer: Tim Jackett

Exterior Color: Flag Blue

HIN/IMO: TLA36008G324

In Stock: Yes

Engines/Generators

Engine 1

Volvo Penta

D1 - 27

Inboard

27HP

20.13KW

Fuel: Diesel

Hours: 50

Year: 2023

Serial #: 5102107265H

Summary/Description

Tartan 365 # 8 is the newest of Tartan's coveted new builds. The 365 was Cruising World's 2022 Boat of the Year! Wonderfully designed, engirded and build right here in the USA!

Brand New Tartan 365 Hull # 8 for sale in Annapolis MD. She is IN STOCK and ready for any additional equipment additions and delivery in spring or sooner.. Special pricing package can include winter storage and spring launch. Ask your CYS broker for details!

Blue Hull, Maple Interior, 2 Cabins 1 Head configuration. She has a complete complement of gear including Air Con, Bow Thruster, Plotter and Autopilot. She draws 4'11" with her Beavertail keel and has Tartan's CCR rig with carbon spars, dual headstays, making for a very well rounded sailplane. Currently she is equipped with a Dodger in Toast Color, and we can add Bimini, connector, cockpit cushions etc as needed.

Please Click **ADDITIONAL INFO** for her full specs and options.

Broker Comments

The Tartan 365 moves the performance in "performance cruising" genre into another gear. With her narrow waterline at beam max, fine lines aft, and raked bow, the Tartan 365 looks ready to fly even when tied to the dock or mooring. That said, her standard carbon-fiber mast and solid lead keel provide a ride second to none available in this size and price range no matter where in the world the building takes place. The Tartan design team was tasked with creating a modern dual-purpose, family-friendly boat with a strong cruising ethos. Tim Jackett and his team have once again proved their talents and created just what is needed in this size at this time. She was rewarded with Cruising World BOAT OF THE YEAR in 2022 on her initial launch!

The layout has a spacious salon with dining for 4 or 5. She has two nice sleeping bunks / cabins and a best in class head configuration with an ample enclosed shower stall.

Step board and you will agree the maple interior and design styling gives the Tartan 365 a modern look in a classic tartan design. The best of both worlds!

On deck she has a twin wheel / modern cockpit with stern uplift seats and a walk through transom / swim platform. The CCR / Solent rig is a delight to sail and offers the most versatile sailplane available to the market. With her Carbon Fiber Mast and Boom, you're treated to standard features that much larger boats boast.

Tartan wins again proving you CAN build a world class sailboat right here in the USA - ALL Tartans are manufactured in Painesville, Ohio, near Lake Erie. Take a second look with your Tartan Sales Team and we are sure you will be left quite

satisfied!

Build Specifications, Highlights and Optional Equipment

- Flag Blue PPG Painted Hull
- White Deck with Tan Contrasting Nonskid
- Mooniest Boot Stripe and Gold Cover Stripe
- Aluminum Toerails for low Maintenance
- SS Handrails on Deck
- Windlass w/ Anchor & Rode - Deck Controls
- Teak Cockpit Coamings
- Twin Wheels
- Bow Thruster
- Electric Housetop Winch
- Teak Cockpit Table
- Hot & Cold Cockpit Shower
- Stern Pulpit Seats
- Walk-Thru Lowering Stern Swim Platform
- Carbon Fibre - CCR Mast
- Carbon Fibre Boom
- Lazy Jacks
- Harken Mainsail Luff System
- Dual Harken Furling for Headsails
- Self Taking Jib (With Vertical Battens)
- Downwind Reaching Sail (Reacher)
- Whisker Pole w/ Track on Mast
- Spinnaker Halyard
- Hot & Cold Pressure Water
- Cockpit Shower
- Enclosed Shower in Head
- Y-Vale and Macerator Systems for Head
- Electric Head
- UpGraded Inverter / Charger - 1000W Inverter
- Microwave at Galley
- Reverse Cycle Heat and Air Conditioning
- Cabin Fans
- 12V Outlets at Helm and Nav Station
- MAPLE Interior Wood
- Ultra - Leather Salon - POSEIDON (Blue)
- Hatch Screens on All Open Hat chess and Ports
- RayMarine Electronics
- AWI Wind Indicator
- Depth / Speed / Temp Transducer
- 2 - i70 Display Heads
- VHF Radio at Nav Station
- RAM Mic at Helm
- p70 Smart Pilot - Below deck RAM
- Axion 12 Multifunction Touch Screen Display in Cockpit Pod
- Fusion Stereo w/ 4 Speakers
- Freight and Local Commissioning Included

- Docking, Safety & Anchor Kits Included

She is Commissioned and ready to delivery to your marina. Please contact a CYS Broker for a closer look and to discuss our special incentive pricing and your trade in boat... Hull # 8 is ready for you now!





