



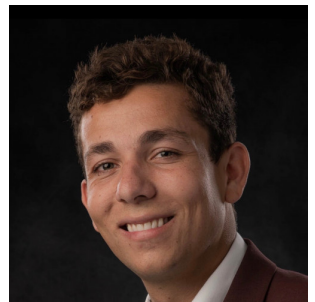
38' (11.58m) 2022 Boston Whaler
Fort Lauderdale Florida United States



OVERVIEW

Manufacturer:	Boston Whaler		
Engines:	4 Mercury	Hull Material:	Fiberglass
Engine Model:	V8 DTS Verado	Cruise Speed:	MPH
Engine HP:	350	Max Speed:	56.9 MPH
Beam:	11' 8"	Cabins/Heads:	1 / 1
Max Draft:	"	Fuel Type:	Gas/Petrol
Water:	60 G (227.12 L)	Fuel:	445 G (1684.51 L)

\$649,000



Data Sheet

Category: Center Consoles
Condition: Used
Model Year: 2022
Beam: 11'8" (3.56m)
LOA: 38' (11.58m)
Cabins: 1
Sleeps: 2
Heads: 1

Maximum Speed: 56.9 MPH
MPH
Fuel Type: Gas/Petrol
Hull Material: Fiberglass
Bridge Clearance: 9'

Dry Weight: 14500 lbs
Fuel Tank: 445 gal (1684.51 liters)
Fresh Water: 60 gal (227.12 liters)
Holding Tank: 10 gal (37.85 liters)
Imported: No
HIN/IMO: BWCE09471122
In Stock: Yes

Engines/Generators

Engine 1

Mercury
V8 DTS Verado
Outboard
350HP
261KW
Fuel: Gas/Petrol
Hours: 73
Year: 2022

Engine 2

Mercury
V8 DTS Verado
Outboard
350HP
261KW
Fuel: Gas/Petrol
Hours: 73
Year: 2022

Engine 3

Mercury
V8 DTS Verado
Outboard
350HP
261KW
Fuel: Gas/Petrol
Hours: 73
Year: 2022

Engine 4

Mercury
V8 DTS Verado
Outboard
350HP
261KW
Fuel: Gas/Petrol
Hours: 73
Year: 2022

Summary/Description

This exceptionally low-hour 2022 380 Outrage is primed for its next thrilling expedition, boasting amazing specifications and impeccably maintained condition.

This exceptionally low-hour 2022 380 Outrage is primed for its next thrilling expedition, boasting amazing specifications and impeccably maintained condition.

Key Highlights

- Quad Mercury 300 V8 Verados (100hr Service done already)
- Component Warranty through 4/08/23
- Extended Engine Warranty through 4/08/27
- New Bottom Paint
- New SeaDek
- Joystick Piloting
- Auto Pilot
- Retractable Sun Shades
- Active Trim / Lenco Trim Tabs
- Seakeeper 5 Gyro Stabilizer
- Aft Retractable Sunshade
- Remote Spotlight
- Spacious Cabin
- Premium Audio Package
- Raymarine Axiom Pro Electronics Package
- Open Array Radar w/Satellite Weather
- Diesel Generator Upgrade
- Underwater Blue LEDs

Deck / Cockpit

Console

- Center helm layout
- Compass with back lighting
- Dash visor with custom stitched cover and recessed storage tray with USB and 12v charging receptacles
- Drink holders (2)
- Electrical switch panel with illuminated text
- Electronics mounting surface with space for dual 16" displays
- Footrest molded into console with fold-down standing platform with maintenance free, anti-fatigue synthetic surface, provides improved visibility for captain and starboard passenger
- Ignition switches - remote key switches in main DC panel cabinet with pushbutton start/stop at helm
- Lockable acrylic sliding entry door
- Mercury DTS dual binnacle controls with integrated engine trim controls
- Steering wheel - cast stainless steel with knob and tilt helm

- Stereo (FUSION® Apollo MS-RA770 with 4.3" color touch screen controls)(integration into Raymarine with Navigation Package) – includes premium multi-source, multi-zone system, AM/FM, MP3, WiFi, USB and AUX input, iPod/iPhone/Android compatible via integrated Bluetooth, Sirius XM option ready, stereo remote controls with LCD display and full audio control from cabin, helm and bow, JL Audio waterproof speakers - exterior, 6.5" aft cockpit (2), 7.7" at helm deck (2), 7.7" component at bow (2), 10" sub-woofer at helm deck (1), 6.5" in cabin (2) with JL Audio amplifiers

Seating

- Foldaway stern bench seat
- Forward console lounge with fold-down armrests, drink holders (2) center armrest with (2) cup holders and 2 outboard arm rests (when center is folded down it provides access to dual USB charging ports)
- Forward deck wrap-around seating with flip-up backrests, drink holders (2), stereo remote and fish box pump out switch
- Helm and companion bolster style seats (3) with fold-down armrests (center seat is electrically actuated, side seats have manual fore and aft adjustment)
- Aft facing seating with stainless steel cup holders integrated into the arm rest (2)

Storage - Exterior

- Bow anchor locker with drains
- Insulated in-floor fishboxes with pump-out; aft (2) forward (1)
- Lifejacket or optional canvas enclosure storage in the hardtop
- Lockable console front storage - holds (2) five gallon buckets and one 36-qt cooler (included)
- Storage under bow seating with LED blue lighting
- Under gunnel cockpit storage shelves
- Helm Deck side coaming pockets with storage nets and blue LED lighting
- Bow side coaming pockets with storage pockets and blue LED lighting
- Insulated storage compartment under aft facing seat with drain and insulated sealed lid (upgradable to livewell option)

Storage Interior

Hardtop / Windshield

- Flood lights (2) recessed into hardtop lighting cockpit area
- Flood light (1) recessed into hardtop lighting bow area
- Hardtop support frame - custom powder coated aluminum frame integrated into the deck providing unobstructed walkways
- Hardtop access; port side ladder to hatch in hardtop
- Lighting; recessed LED courtesy lighting (blue) (6)
- Lighting; recessed 2 color LED courtesy chart light (red and white) (1)
- Lifejacket/Canvas Enclosure storage
- Lockable electronics box in hardtop
- Outrigger ready
- Rod holders (6)
- Tempered curved glass windshield with electric actuated vent

- Tempered full height side glass
- Mercury SmartCraft Vessel View 7" color touch screen display (network connections to Raymarine with Navigation Package)
- Windshield defogger integrated into hardtop

Couch Leaning Post

- Aft facing couch with insulated cooler storage under hinged seat, stainless steel cup holders recessed into seating arms (2)(optional 40 gallon livewell under seat)
- Prep station work surface - easy stow-and-go work surface with teak counter, stainless steel drink holders (4) and poly cutting board
- Grab rails (3)
- Refrigerator/freezer - stainless steel pullout drawer (1.75 cubic feet)
- Storage drawers (3) starboard side drawer system
- Helm and companion bolster style seats (3) with fold-down armrests (center seat is electrically actuated) (side seats have manual fore and aft slides)
- Port side fold-down footrest
- 120-V electrical outlet

Cabin

- Dual USB receptacle, (2) 120-V outlet
- Air conditioner with exterior dash outlets (12K BTU)
- Convertible settee / double berth with easy to clean fabric upholstery
- Fold down seat backs with durable material providing storage conversion surface
- Flooring - solid teak
- Lighting - LED diffused courtesy lights (blue)
- Lighting - LED switchable overhead lights (4)(white)
- Microwave
- Opening portholes (2)
- Skylight and side lights (3)
- Storage cabinets
- Rod storage, (4) 6.5' and (2) 7.5' rods
- Vanity with custom vessel sink
- Trash receptacle

Enclosed Head

- Fiberglass enclosure with frosted acrylic locking door
- Hinged solid teak toilet cover
- Shower with dedicated wand/sprayer
- Toilet paper holder
- Vacu-Flush® toilet, holding tank with tank vent filter, overboard discharge, and dockside pump-out
- Storage drawers (not compatible with freezer plate option)

Mechanical

- 300 V8 DTS Black Quad Mercury FourStrokes with hydraulic power steering
- 445-gallon aluminum fuel tank
- Bilge pumps - automatic (1100 GPH berth, 2000 GPH bilge)
- Bilge pump - high water bilge pump with visual and audible alarm (2000GPH)
- Battery charger - 40 AMP and 50 AMP @ 12-V multi stage smart charging
- Battery trays (5) with remote switches and automatic charging/paralleling relays
- Bonding system for underwater through hull fittings
- Cast bronze thru hull and seacocks (below waterline)
- Cast stainless steel thru hulls (above waterline)
- Cockpit and machinery space lighting
- Electric trim tabs with indicator (dual ram)
- Electric drive trim
- Electric trumpet horn
- Engine fuel/water separators
- Freshwater - pressurized hot and cold water system with dockside hookup, with tank level indicator integrated into Vessel View with a 60-gallon tank
- Freshwater manifold system with individual valve per circuit
- Freshwater - hot and cold, sink and shower in console, pull-out shower at transom and dive door
- Freshwater washdown - stainless steel spigot in aft cockpit and anchor compartment
- Diesel Generator with fire suppression system, automatic with manual override
- LED navigation lights recessed in hardtop
- Propellers - stainless steel
- Raw-water washdown - stainless steel spigot in aft cockpit
- Self leveling tab system - Dynamic Running Surface
- Shore power inlets - dual 30-amp with isolation transformers
- Transducer pocket in hull bottom for flush mounting B260/B275 transducer
- Water heater (6 gal)
- Windlass with handheld remote control, 400' rode with anchor swivel, 35 lb anchor integrated into bow with a polished stainless steel bow roller
- Windshield wiper with wash system

Mechanical Disclaimer

Engine and generator hours are as of the date of the original listing and are a representation of what the listing broker is told by the owner and/or actual reading of the engine hour meters. The broker cannot guarantee the true hours. It is the responsibility of the purchaser and/or his agent to verify engine hours, warranties implied or otherwise and major overhauls as well as all other representations noted on the listing brochure.



























