



# Best Day Ever

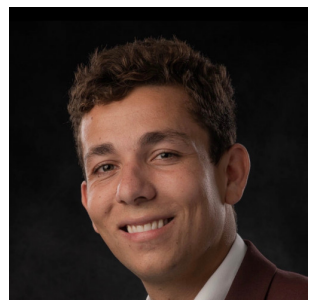
40' (12.19m) 2019 Absolute 40STL  
Boca Raton Florida United States



## OVERVIEW

**\$419,000**

Manufacturer:	Absolute		
Engines:	2 Volvo	Hull Material:	Fiberglass
Engine Model:	D6-330	Cruise Speed:	28 MPH
Engine HP:	330	Max Speed:	35 MPH
Beam:	13' 1"	Cabins/Heads:	/
Max Draft:	3' 8"	Fuel Type:	Diesel
Water:	66 G (249.84 L)	Fuel:	206 G (779.79 L)



Jake Buffaline    [jake@26northyachts.com](mailto:jake@26northyachts.com)

941-718-3590

## Data Sheet

Category: Sports Cruiser  
Condition: Used  
Model Year: 2019  
Beam: 13'1" (3.99m)  
Max Draft: 3' 8" (1.12m)  
LOA: 39' 1" (11.91m)

Maximum Speed: 35 MPH  
Cruise Speed: 28 MPH  
Fuel Type: Diesel  
Hull Material: Fiberglass  
Hull Shape: Deep Vee

Dry Weight: 20500 lbs  
Fuel Tank: 206 gal (779.79 liters)  
Fresh Water: 66 gal (249.84 liters)  
Holding Tank: 10.5 gal (39.75 liters)  
HIN/IMO: A0AAZ649F819  
In Stock: Yes

## Engines/Generators

### Engine 1

Volvo  
D6-330  
Inboard/Outboard  
330HP  
246.08KW  
Fuel: Diesel  
Hours: 743

### Engine 2

Volvo  
D6-330  
Inboard/Outboard  
330HP  
246.08KW  
Fuel: Diesel  
Hours: 743

### Generator 1

Kohler  
6EKOD  
Hours: 200

## Summary/Description

Introducing "Best Day Ever", a Absolute 40 Sport Line (STL) - the epitome of versatility in the Absolute Yachts family. This Italian yacht effortlessly blurs the lines between a day-boat and weekender.

Introducing "Best Day Ever", a Absolute 40 Sport Line (STL) - the epitome of versatility in the Absolute Yachts family. This Italian yacht effortlessly blurs the lines between a day-boat and weekender, thanks to the ingenious design maximizing every inch of space. Above deck, revel in expansive areas for relaxation and entertainment. Below deck, indulge in spacious accommodations for four. The vessel is located in Boca Raton, FL and is ready to be seen on short notice.

### Highlights

- **Joystick Piloting**
- **Large swim platform with garage**
- **Full beam master**
- **Sundeck on both aft and forward**
- **New drives - warrantied for two years**
- **Bottom paint and prop speed recently done**
- **Canvas, screen and Isin Glass**
- **Stylish European design**
- **New Icemaker**
- **Two refrigerator freezer combos**
- **Induction cooktop upstairs and downstairs**

### Electronics

- Volvo Penta Joystick Control
- ACR Spotlight
- Bennett Trim Tabs
- Volvo Penta Engine Trim
- Fusion MS-AV755
- Raymarine VHF
- Raymarine Display
- Raymarine Quantum Radar

### Engine Room

- Twin 2018 Volvo Penta D6-330AF

- 330-horsepower at 3500 RPM
- Kohler 6EKOD Generator, 60 Hertz (200hrs)
- Fire Extinguish system
- Quick Automatic Boiler water heater
- Sterling Power Galvanic Isolator

## Cockpit Overview

- The boat was obviously designed with outer space in mind. The U-shaped cockpit seating can comfortably accommodate eight or more, while the topside kitchen to port contains a induction top, fridge, ice maker, sink and plenty of storage hidden below a stylish lid. Meals and drinks are easy to prepare and serve without having to leave the main deck.
- The cockpit on the 40 STL feels open and easy to move about with her wide companionways which provide boarding access from the swim platform to the huge sundecks waiting at the bow and stern. The aft deck also hides plenty of storage space. Electric rams lift the entire rear hatch, exposing plenty of room for dockside power cords, fenders, extra lines and water toys.
- The Absolute 40 STL provides abundant seating and accommodations for sun-seekers, and the teak deck and folding table provide attractive accents to the already beautiful design.

## Helm

- The helm feels like a natural continuation of the entertainment area. Flip-up bolsters and a teak toe rail make it comfortable to sit or stand at the wheel, where chrome accented analog gauges surround the Raymarine navigation system. Well-placed controls for every system — from the Fusion stereo to the anchor windlass — are all within easy reach.
- "Best Day Ever" features twin 330-hp Volvo Penta D6 diesel engines coupled to Duoprop outdrives, but still includes a joystick control. The computerized system makes docking and low-speed maneuvering simple and intuitive. It's easy to handle in tight spaces and slides backward into a slip with ease.
- With the Volvo D6 engines, the 40 STL lifts off with enough power to pull a skier or a couple of kids on a tube. The boat is surprisingly quick for a 40-foot, 20,500-pound vessel and handles like the name implies — sporty. The boat will comfortably cruise at 28mph and top out at 35mph.

## Cabin Overview

- Although people typically linger around the main deck and all of its creature comforts, there's much more to the boat hidden below. Two small steps (or one giant leap) into the cabin lands passengers in front of a simple but full-featured galley, which includes a cooktop and a second, larger refrigerator.
- The abundance of natural light pouring into the forward cabin through the port and starboard windows make the oak-accented space feel huge. There's enough room at the dinette for four to six people to enjoy a meal if the weather forces everyone inside. The dinette also converts into a double bed to provide roomy sleeping quarters for a second couple or for the kids.
- To starboard, a full-size, fully-equipped head and stand-up shower includes an adjustable, handheld wand and toilet. The head also provides a dry space separated from the shower by a folding acrylic door. This space has plenty of storage

and room to stand at the vanity while preparing for a night in port.

- Hidden below the cockpit is a pleasant surprise, which again showcases Absolute's efficient and innovative use of space. Just aft of the forward salon is a full width, mid-cabin master stateroom, which includes a full-size double bed and lounge seat on the port side.

## Disclaimer

The company offers the details of this vessel in good faith but cannot guarantee or warrant the accuracy of this information nor warrant the condition of the vessel. A buyer should instruct his agents, or his surveyors, to investigate such details as the buyer desires validated. This vessel is offered subject to prior sale, price change or withdrawal without notice.































































