



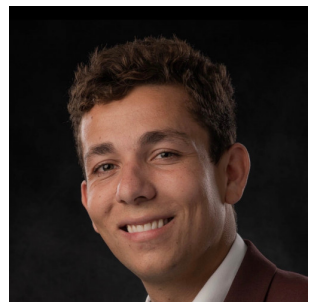
42' (12.80m) 2022 Prestige 420S
Fort Lauderdale Florida United States



OVERVIEW

Manufacturer:	<i>Prestige</i>		
Engines:	2 Cummins	Hull Material:	Fiberglass
Engine Model:	QSB 6.7	Cruise Speed:	
Engine HP:	425	Max Speed:	
Beam:	13' 5"	Cabins/Heads:	2 / 2
Max Draft:	3' 7"	Fuel Type:	Diesel
Water:	112 G (423.97 L)	Fuel:	309 G (1169.69 L)

\$699,000



Data Sheet

Category: Cruisers
Condition: Used
Model Year: 2022
Beam: 13'5" (4.09m)
Max Draft: 3' 7" (1.09m)
LOA: 42' 10" (13.06m)
Cabins: 2
Sleeps: 4
Heads: 2

Fuel Type: Diesel
Hull Material: Fiberglass
Hull Shape: Deep Vee

Dry Weight: 22401 lbs
Fuel Tank: 309 gal (1169.69 liters)
Fresh Water: 112 gal (423.97 liters)
HIN/IMO: IRIWH074F122
In Stock: Yes

Engines/Generators

Engine 1

Cummins
QSB 6.7
Inboard
425HP
316.92KW
Fuel: Diesel
Hours: 95
Year: 2022
Location: Port

Engine 2

Cummins
QSB 6.7
Inboard
425HP
316.92KW
Fuel: Diesel
Hours: 95
Year: 2022
Location: Starboard

Generator 1

Cummins

Summary/Description

Freshwater kept in Chicago for a majority of its life and lift kept for a short period of time in South Florida, this vessel has been excellently maintained.

Just listed - This 2022 Prestige 420S primarily stored in Chicago's freshwater and briefly lift kept in South Florida, boasts exceptional upkeep. The Prestige 420S, a luxurious sport cruiser, offers captivating aesthetics, a modern lavish interior, and performance coupled with the control necessary for unforgettable voyages. Featuring two staterooms and two heads, the Prestige 420S encompasses everything one seeks in a larger express cruiser. New to the market, this French masterpiece is turn key and ready to cruise to the Bahamas in no time.

Vessels Key Highlights

- **Freshwater / Lift Kept Boat**
- **Joystick**
- **Cummins QSB 6.7 with low hours**
- **V-Drive Propulsion**
- **Raymarine Electronics With Radar**
- **North American Package**
- **Two Stateroom / Two Head Layout**
- **Electric Sunshade Aft**

Optional Equipment

- North American Package

- Foredeck Sunpad
- Teak Flooring in Cockpit and Swim Platform
- Two Burner Cooktop, Combo Microwave and Grill
- Freshwater / Saltwater Washdown System

- Gray Oak Interior Woodwork

- Luxury Package with Bedding, Linens, and Dishware

- Electronics Package

- Axiom 12" Multifunction Display
- Cummins Engine Interface and Raymarine Autopilot
- Ray 91 VHF AIS Receiver
- Raymarine Quantum 2 Radar

- Bowers and Wilkens Audio Package with Amp

- Anchoring Kit

- Cockpit Electrical Sun Awning
- Hydraulic Swim Platform
- Teak Table in Cockpit to Convert into Sunbed
- Cockpit Table Cushion
- Courtesy Lighting in Cockpit
- Deck Searchlight
- Upgraded Tropical Air Conditioning
- Upgraded Galley Countertop to Laminan Stone
- Electric Hi-Lo Luxury Folding Table in Salon
- Carpet in Both Staterooms
- TV installed in Salon and Master Stateroom
- Bottom Paint

Standard Equipment

- 2 Stateroom / 2 Head Layout
- Exterior Protective Covers
- Electric Trim Tabs
- Shore Power and Water Connection
- Quiet Flush HEads
- Water Pressure System
- Battery Charger
- Charger
- Pre-Wiring for Satellite TV
- Windlass Control at Bow and Helm
- Opening Window both Starboard and Port

Disclaimer

The company offers the details of this vessel in good faith but cannot guarantee or warrant the accuracy of this information nor warrant the condition of the vessel. A buyer should instruct his agents, or his surveyors, to investigate such details as the buyer desires validated. This vessel is offered subject to prior sale, price change or withdrawal without notice.























































