



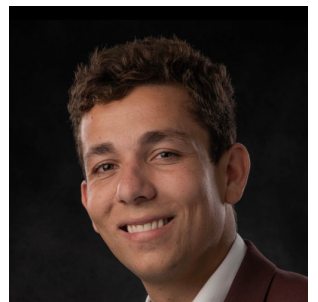
35' (10.67m) 2018 Formula 350SS
Fort Lauderdale Florida United States



OVERVIEW

Manufacturer:	Formula		
Engines:	3 Mercury	Hull Material:	Fiberglass
Engine Model:	Verado	Cruise Speed:	
Engine HP:	350	Max Speed:	
Beam:	10' 9"	Cabins/Heads:	1 / 1
Max Draft:	3' 3"	Fuel Type:	Gas/Petrol
Water:	29 G (109.78 L)	Fuel:	252 G (953.92 L)

\$329,000



Jake Buffaline jake@26northyachts.com

941-718-3590

Data Sheet

Category: Cruisers
Condition: Used
Model Year: 2018
Beam: 10'9" (3.28m)
Max Draft: 3' 3" (0.99m)
LOA: 35' (10.67m)
Cabins: 1
Single Berths: 2
Heads: 1

Fuel Type: Gas/Petrol
Hull Material: Fiberglass
Hull Shape: Deep Vee
Bridge Clearance: 6' 10"

Dry Weight: 13470 lbs
Fuel Tank: 252 gal (953.92 liters)
Fresh Water: 29 gal (109.78 liters)
Holding Tank: 37 gal (140.06 liters)
HIN/IMO: TNRD1462C818
In Stock: Yes

Engines/Generators

Engine 1

Mercury
Verado
Outboard
350HP
261KW
Fuel: Gas/Petrol
Hours: 360
Year: 2018
Location: Port

Engine 2

Mercury
Verado
Outboard
350HP
261KW
Fuel: Gas/Petrol
Hours: 360
Year: 2018
Location: Middle

Engine 3

Mercury
Verado
Outboard
350HP
261KW
Fuel: Gas/Petrol
Hours: 360
Year: 2018
Location: Starboard

Generator 1

Kohler
Hours: 95

Summary/Description

Formula's 350 Sun Sport is sleek and low-slung, a delight on the eyes. Its design prioritizes ride quality, superb handling, and enjoyment both on deck and in the water. She boasts a full galley, a generous head, a large forward berth, and upscale decor, all of which ensures weekend luxury for two.

Introducing the Formula 350 Sun Sport – a captivating blend of sophistication and performance that elevates your yachting experience. This sleek and low-slung masterpiece is a visual delight, designed to prioritize ride quality, superb handling, and unparalleled enjoyment both on deck and in the water.

This Slightly Used, **One of a Kind**, Outboard Powered Formula 350 SS is a rare gem, presenting a unique opportunity for discerning buyers. Stand out on the water with the only one of its kind currently available on the market. Its distinctive features include a full galley, a generous head, a large berth, and upscale decor, guaranteeing weekend luxury for two.

Seize this exclusive chance to own a yacht that not only stands out in its design but also offers a bespoke yachting experience. Elevate your weekends with the Formula 350 Sun Sport – where style, performance, and luxury converge.

Key Highlights

- **Platinum Level Engine Warranty to 6/27/2026**
- **Very low hours**
- **Joystick Piloting**
- **Triple Mercury 350 Verados**
- **Hard Top Option with Sunroof**
- **Retractable sunshade awning**
- **Kept in dry storage**
- **A/C and Generator Equipped**
- **Highly optioned**

Electronics

- JoyStick Piloting
- Autopilot System
- Siren Alarm System
- Clarion Radio (3 controls)
- RayMarine Hybrid Touch GPS
- Mercury Engines Monitor
- JBL Speakers throughout vessel
- ICOM VHF
- TV in Cabin
- Lewmar Electric Windlass
- Bennett Trim Tabs

Inside Equipment Full Specs

MULTI-COLOR COMPLETE COWL

AIR DAM SILVER DIAMOND PEARL

FRNTCOWL MIDNIGHT BLUE METALLC

TOP COWL CRYSTAL BLUE

REARCOWL CRYSTAL BLUE

FLAGSHIP GRAPHIC B

CRYSTAL BLUE MTLLC w/SDP

STRIPE 1-SILVER DIAMOND PEARL

STRIPE 2-MIDNIGHT BLUE METALLC

STRIPE 3-CRYSTAL BLUE METALLIC

STRIPE 4-MIDNIGHT BLUE METALLC

STRIPE 5-SILVER DIAMOND PEARL

STRIPE 6-SILVER DIAMOND PEARL

STRIPE 13-CRYSTAL BLUE METALLC

MULTI-POSITION SUN LOUNGE

DASH PANELS BLACK

DASH GEL, GRAY

COCKPIT CORIAN, ARROWROOT

ALCOVE CORIAN, ARROWROOT

MOONDUST BASE VINYL

MAIN ACCENT, CRYSTAL BLU WEAVE

ACCENT PIPING, STEEL

UPPER PIPING, CHROME SILVER

DECOR SILVER SURF A w/GRAY BAS

CABIN SEATING, MORTAR

CABIN WOODGRAIN FLOOR GRY WASH

LINEN STEEL DOORS

CORIAN, ARROWROOT
AUTOMATIC OB FLUSHING SYSTEM
CHARTPLOTTER AXIOM PRO 9 S
US MAPS
SHOREPOWER-120V
ENT GROUP-HDTV w/BLURAY, 120V
16000 BTU REVRS CYCLE A/C,120V
7.5KW GAS GENERATOR LOWCO,120V
VAC HD, HLD TANK, MACERATOR
JL AUDIO LIGHTED CKPT SPEAKERS
ELECTRIC WINDLASS/CHAIN/ANCHOR
REMOTE CONTROL SEARCHLIGHT
FENDER CLIPS
VHF RADIO w/ANTENNA
HARDTOP w/RETRACTABLE SUNROOF
UNDERWATER LIGHTING
CKPT BLUE LED LIGHTING SYSTEM
ALL-WEATHER CKPT COVER, SILVER
SURESHADE, SILVER
FRONT/SIDES/AFT, SILVER
SWIM PLAT DOLPHIN GRAY/WHT VNY
WOVEN COCKPIT MAT MOONDUST

Disclaimer

The company offers the details of this vessel in good faith but cannot guarantee or warrant the accuracy of this information nor warrant the condition of the vessel. A buyer should instruct his agents, or his surveyors, to investigate such details as the buyer desires validated. This vessel is offered subject to prior sale, price change or withdrawal without notice.

























