



Take A Breath

48' (14.63m) 1989 Offshore Yachts Yachtfisher
New Bern North Carolina United States



OVERVIEW

Manufacturer:	Offshore Yachts		
Engines:	2 Caterpillar	Hull Material:	Fiberglass
Engine Model:	3208TA	Cruise Speed:	16 Knots
Engine HP:	375	Max Speed:	20 Knots
Beam:	15' 5"	Cabins/Heads:	2 / 2
Max Draft:	5' 0"	Fuel Type:	Diesel
Water:	200 G (757.08 L)	Fuel:	520 G (1968.41 L)

\$249,000



Data Sheet

Category: Motor Yachts
Subcategory: Aft Cabin
Condition: Used
Model Year: 1989
Beam: 15'5" (4.70m)
Max Draft: 5' (1.52m)
LOA: 55' (16.76m)
LOD: 48' (14.63m)
Cabins: 2
V Berths: 1
Queen Berths: 1
Full Beam Master: Yes
Heads: 2

Maximum Speed: 20 Knots
Cruise Speed: 16 Knots
Fuel Type: Diesel
Hull Material: Fiberglass
Hull Shape: Displacement
Bridge Clearance: 15' 3

Gross Tonnage: 38
Dry Weight: 41000 lbs
Fuel Tank: 520 gal (1968.41 liters)
Fresh Water: 200 gal (757.08 liters)
Holding Tank: 40 gal (151.42 liters)
Designer: Tung Hwa
HIN/IMO: THC48068E989
In Stock: Yes

Engines/Generators

Engine 1

Caterpillar
3208TA
Inboard
375HP
279.64KW
Fuel: Diesel
Hours: 6126
Year: 1989
Location: Port

Engine 2

Caterpillar
3208TA
Inboard
375HP
279.64KW
Fuel: Diesel
Hours: 6126
Year: 1989
Location: Starboard

Generator 1

Westerbeeke
Hours: 2663

Summary/Description

Take a Breath has undergone a comprehensive upgrade by her owners who are very knowledgeable and took special care improve all systems. She has no leaks or stains anywhere in the boat, her interior looks new, the engine room is impeccable, and she is ready to go on her next adventure.

The Offshore design features spacious accommodations in two sleeping cabins. A v-berth in the forward cabin with private access to full guest head with separate shower and a centerline queen in the master stateroom with an ensuite head with separate tub/shower. She has a raised main salon, a galley down forward.

Built by Tung Hwa in Taiwan, the Offshore 48 is a traditional aft cabin cockpit yacht with a distinctive trawler-style appearance and versatile interior layout. The low-freeboard hull is cored from the chine up, and a generous 15'6" beam allows for wide walkaround side decks that are protected with raised bulwarks. This Offshore has a comfortable two-stateroom galley-down floorplan. A serving counter overlooks the galley, and large windows provide plenty of natural lighting throughout the salon. A lower helm and dual sliding deck doors are standard. Aft, the full-beam master stateroom with ensuite head features teak cabinetry and a large window and door leading aft to the cockpit. The forward guest stateroom has a V-berth. Both heads contain separate stall showers. The aft deck offers plenty of space for a variety of deck furniture. Although called a Yachtfisher, the cockpit is best suited for boarding and swimming. Equipped with twin 375hp Cat diesels, the Yachtfisher cruises at 16 knots. © 2024 PowerBoat Guide

Offshore Yachts are designed and built with an attention to detail that is remarkable. The more you know about these boats, the more you'll appreciate Offshores demanding standards of quality.

Vessel Walkthrough

Take a Breath has a full width teak swim platform and a transom door to access her aft cockpit, which is equipped with hot and cold water. She has davits which hold her 11' 4" Boston Whaler with a 9.9 Yamaha 4stroke engine (new 2022) aft of the teak swim platform, giving ample full beam access to the stern and dinghy.

Her Aft Cockpit has two large deck hatches that provide good access to the lazarette, which houses the generator and steering system, and also provides a large storage on port and starboard side for your gear.

A full size door provides direct access to the master stateroom from the aft cockpit.

Take a Breath's Flybridge offers helm & companion chairs with a table, and will seat six comfortably. Storage is good underneath the starboard settee, and can be accessed from the salon companionway.

Take a Breath's Salon can be accessed from the sundeck or from her midship doors.

Her side doors are designed with gates in the handrails that can give direct access from a dock if needed.

Take a Breath has an L shaped settee with a dinning table and bar top counter that occupy the portside. Her lower helm station and entertainment cabinet are to stbd. Natural light and ventilation are provided by her forward windshield & large opening side windows & doors, and when needed air conditioning is also available.

Just forward is her U-shape Galley which also receives natural lighting from the forward windshield. Ventilation is provided by an overhead deck hatch & two opening portlights.

Take a Breath's galley is equipped with : Princess propane stove/oven, Grunert cold plates (new compressor 4/19), single stainless sink.

The Guest Head is directly across from the galley and offers a toilet & separate shower stall. An overhead deck hatch & two opening portlights provide ventilation.

Take a Breath offers a v-berth in her forward stateroom with private access to the guest head. There is a hanging locker and access to the chain locker. Two overhead deck hatches & two opening portlights provide excellent ventilation.

The Master Stateroom is aft of the salon and also offers a queen island berth. It is quite roomy with hanging lockers & drawers. There are washer/dryer hookups inside a cabinet. The master stateroom is equipped with air conditioning, but also has a large window and full size door that open to the aft cockpit.

Private access to the Master Head is to starboard which also has a separate shower/tub combo. There is an opening portlight for ventilation.

Bridge Clearance and Other Measurements

Specific Bridge Clearance heights are:

Anchor Light: 18' 9"

Wifi Antenna: 18' 2"

Wifi Base: 15' 11"

To Antenna: 15' 9"

Top of Arch: 15' 3"

She has completed the Great Loop and after lowering all antennas she went under the Chicago bridges.

Head Room

- 6'4" Saloon
- 6' 5" Galley
- 6' 6" Forward Birth
- 6' 4" Forward Head
- 6' 4" Aft Birth
- 6' 3" Forward Head
- 44" Engine Room

Beds

- 6' 6" by 58" Aft Mattress (Center Lined Queen)
- 6' 6" Both Sides in V-Birth

Keel Extends below Propellers

- 30" diameter 2" shaft
- 5' Draft

Electronics

- New Garmin VHF
- Garmin 5208 GPS (3)
- Replaced radar in 2016
- Added AIS in 2016 Transmit and Receive
- AIS system
- Wifi Antenna
- Wave wifi internet connection
- Denon receiver
- Sirius XM antenna (receiver does not go with the boat)
- Toshiba DVD player
- Yamaha subwoofer
- Boston acoustic
- Samsung flat screen TV in main cabin
- Denon home theater with surround sound

Galley

- Mini Fridge conveys (upper deck)
- Magma Grill (upper Deck)
- Propane monitor in galley
- Carbon Monoxide detectors
- 3 burner Princess stove/oven - propane
- Single sink
- Large holding plates for refrigerator and freezer

On Deck

- Raw Water Spiggot at anchor
- Fresh Water Spiggot on bow under windless
- Nilsson Windlass
- Foot Switches up and Down for windlass
- Spare Danforth Anchor
- 30' Chain 150' Line
- Main Anchor
- 200' Chain with 12' line secured to boat

Mechanical

Engines

- 3208 TA Catapillar
- 375 HP
- Cat 3208TA 375HP 6126 hrs, 3000 hrs since new cylinder heads and top end gone through by authorized Caterpillar mechanic.
- Injector Pumps rebuilt
- Turbos checked
- New Risers
- New Hoses

Generator

- Generator located in aft lazarette
- Back of generator (windings) new November 2018
- Generator hours - engine 2663. electrical windings 852.

Maintenance and Upgrades

General

- Hauled in July 2022 for the bottom to be cleaned and painted, 1 new seacock, and hull waxed
- New isinglass 2020
- Replaced all lights throughout with LED
- Steering Rams rebuilt May with new hoses

Engines

- New cylinder heads
- Injector Pumps rebuilt
- Turbos checked
- New Risers
- New Hoses
- FULL DETAILED MAINTENANCE RECORDS

HVAC

- Fwd Cruiseair 10K BTU self contained new 2-13-23
- Saloon Cruiseair split unit 16K BTU new compressor unit 2-13-23
- Aft Marineair 12K BTU self contained original.

Other Items of Note

- Sunbrella used throughout the boat
- UV solar custom shades
- Cabinet in after master has washer and dryer and hookups
- Access to cockpit in aft master
- Safe through bolted into the floor and goes with the boat
- Cedar lined closet
- Self contained original AC unit in aft master closet
- Water line design magnetic shades for hatches mounts on outside
- Jabsco head in after head
- Teak wine rack in cabinet in saloon
- Storage under forward stairs
- Sump pump under forward stairs
- New AC in v-berth has its own controls in v-berth
- Storage under v-berth
- No storage under master bed
- Labeled and organized back of electrical panel in forward head behind head
- Full access to engine room from Aft Master and through saloon floor
- Manual plug in windlass located in aft lazarette
- Line for spare anchor in aft lazarette
- Shades for front and side windows that snap on
- Dock box conveys
- Spare Propellers
- All propellers have been computer tuned
- New insinglass on upper helm area (2022)
- 300W solar panels (2)
- AGM Batteries

Disclaimer

The company offers the details of this vessel in good faith but cannot guarantee or warrant the accuracy of this information nor warrant the condition of the vessel. A buyer should instruct his agents, or his surveyors, to investigate such details as the buyer desires validated. This vessel is offered subject to prior sale, price change or withdrawal without notice.

Mechanical Disclaimer

Engine and generator hours are as of the date of the original listing and are a representation of what the listing broker is told by the owner and/or actual reading of the engine hour meters. The broker cannot guarantee the true hours. It is the responsibility of the purchaser and/or his agent to verify engine hours, warranties implied or otherwise and major overhauls as well as all other representations noted on the listing brochure.



Main Boat Pic Exterior Port Side



Bow from Upper Helm



Bow



Windlass w/ Foot Controls



Windlass



Port Side Aft



Bow Looking Aft



Port Side Forward



Port Side aft Steps



Aft Upper Deck





Aft Upper Deck



Aft Upper Deck



Outside Refrigerator



Outside Bar Area



Bow from Upper Helm



Upper Helm Area



Upper Helm Area



Helm Station



Helm Station



Helm Station



Upper Helm Area



Upper Deck Seating



Upper deck Aft



Boston Whaler



Aft Deck



Hydraulic Steering







Aft Master



Aft Master



Aft Master



Chart Drawer



Mounted Safe



Master Head



Master Head



Starboard Aft Saloon



Aft Saloon



Storage Under Stairs



Port Aft Saloon



Inside Helm Station



Lower Helm



Galley



Galley



Galley Area



Forward Sink/Head



Forward Head/Shower



V-Berth Port



V-Berth



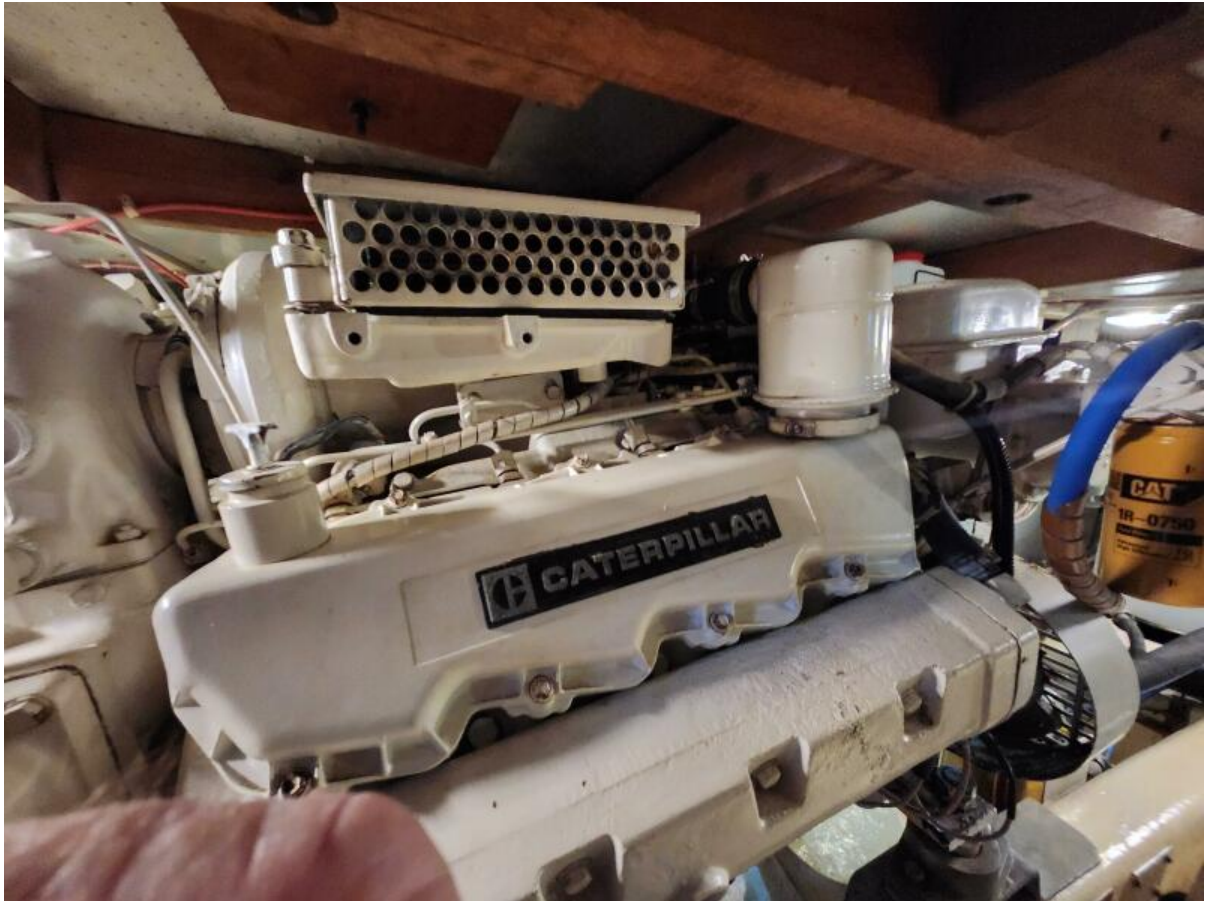
V-Berth Starboard



Port Engine w/Shaft



Starboard Engine w/ Shaft



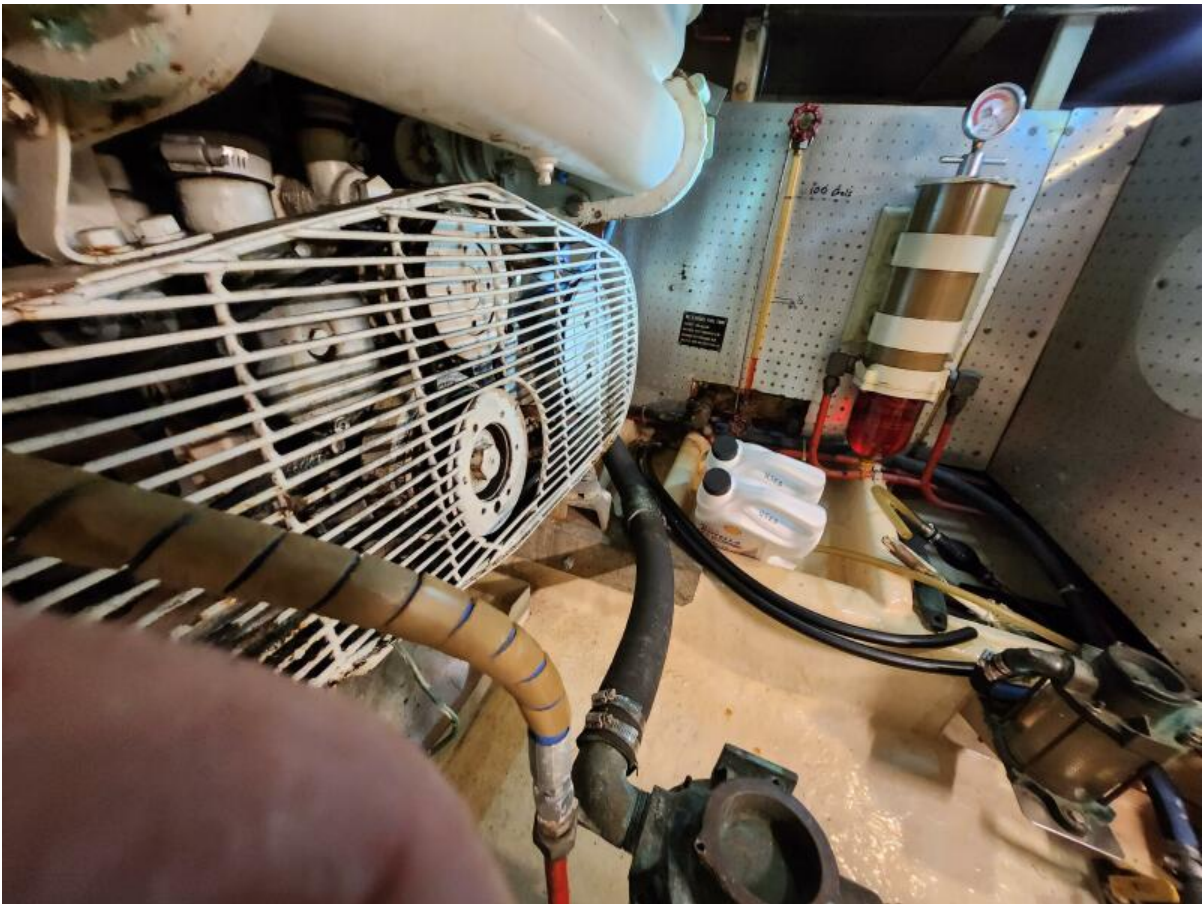
Port Engine



Engine Room Forward - Fuel Polisher



Starboard Engine



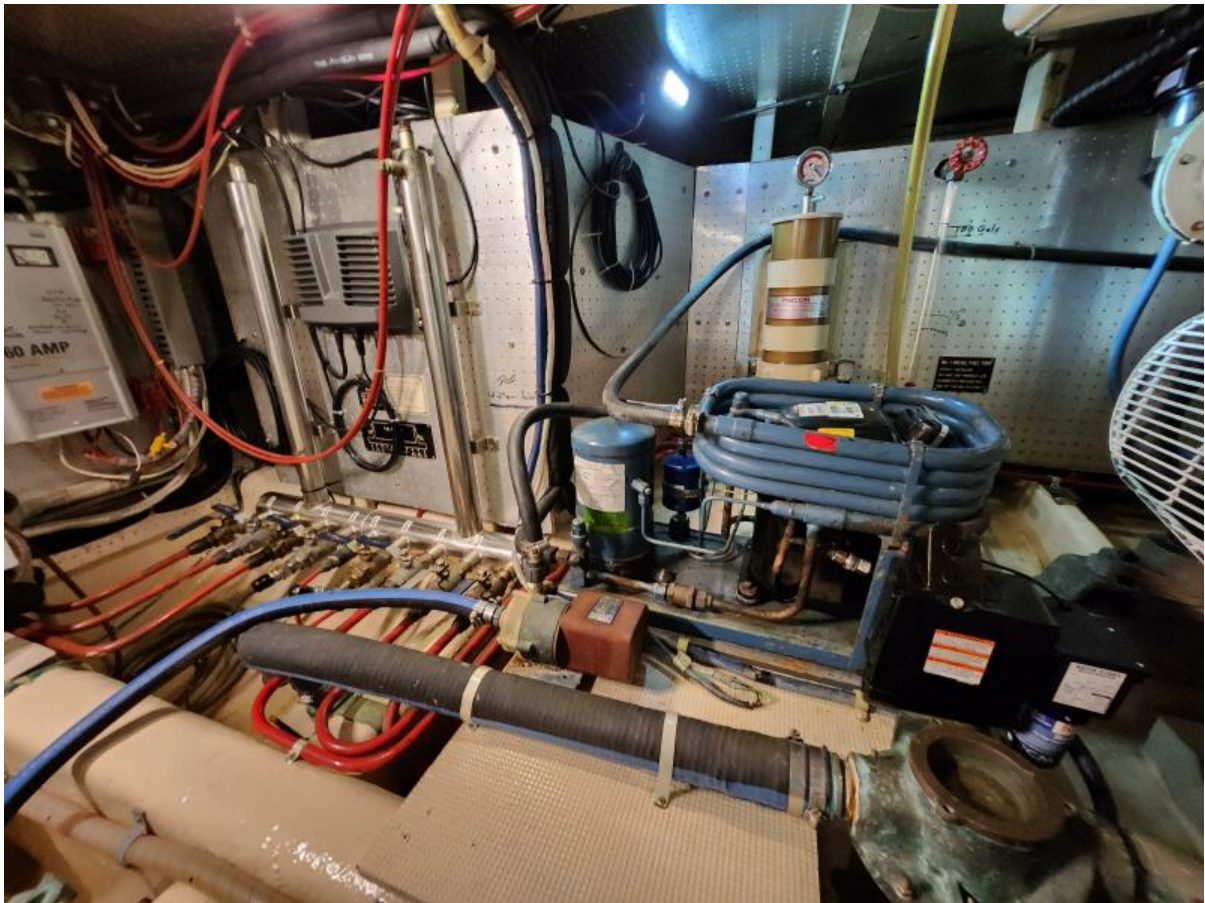
Engine Room Panning Forward



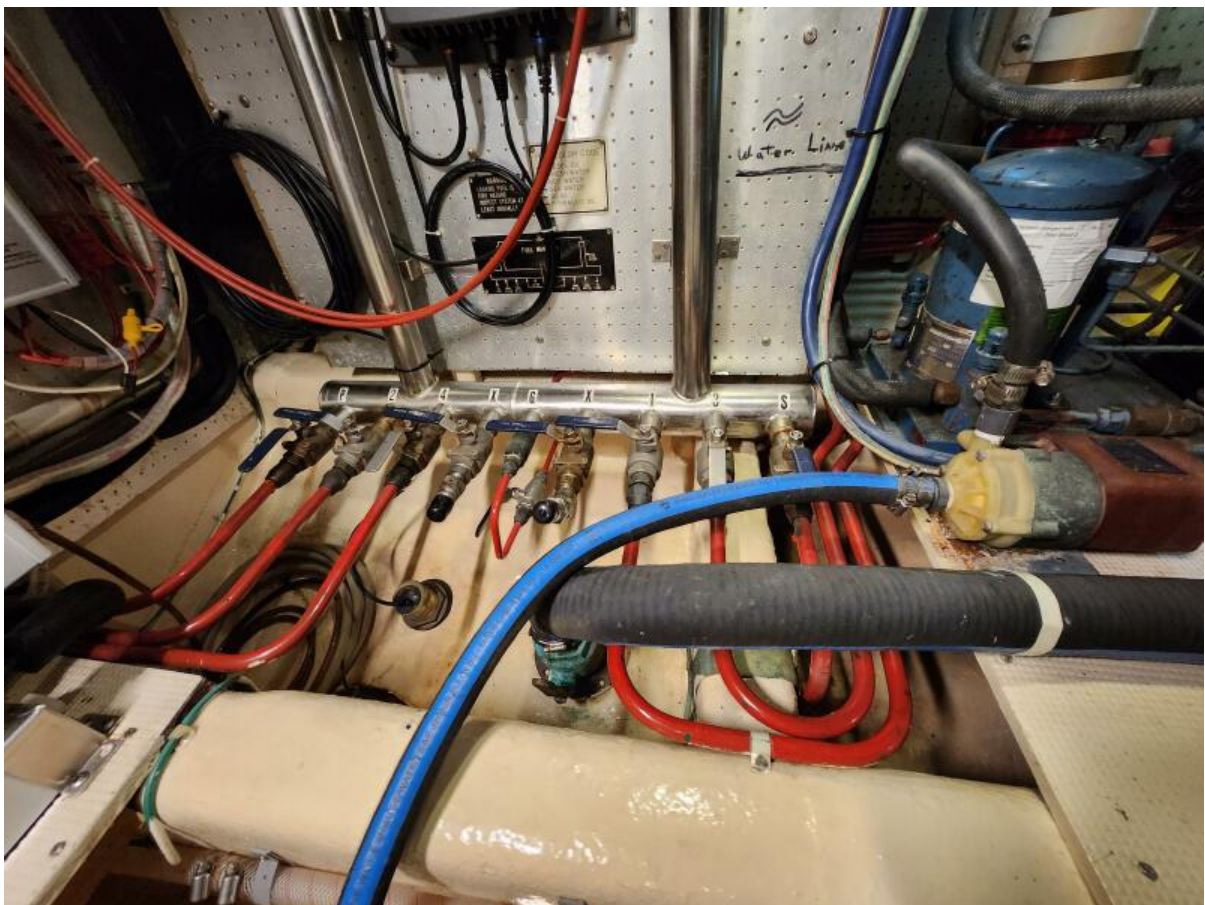
Engine Room Panning Forward



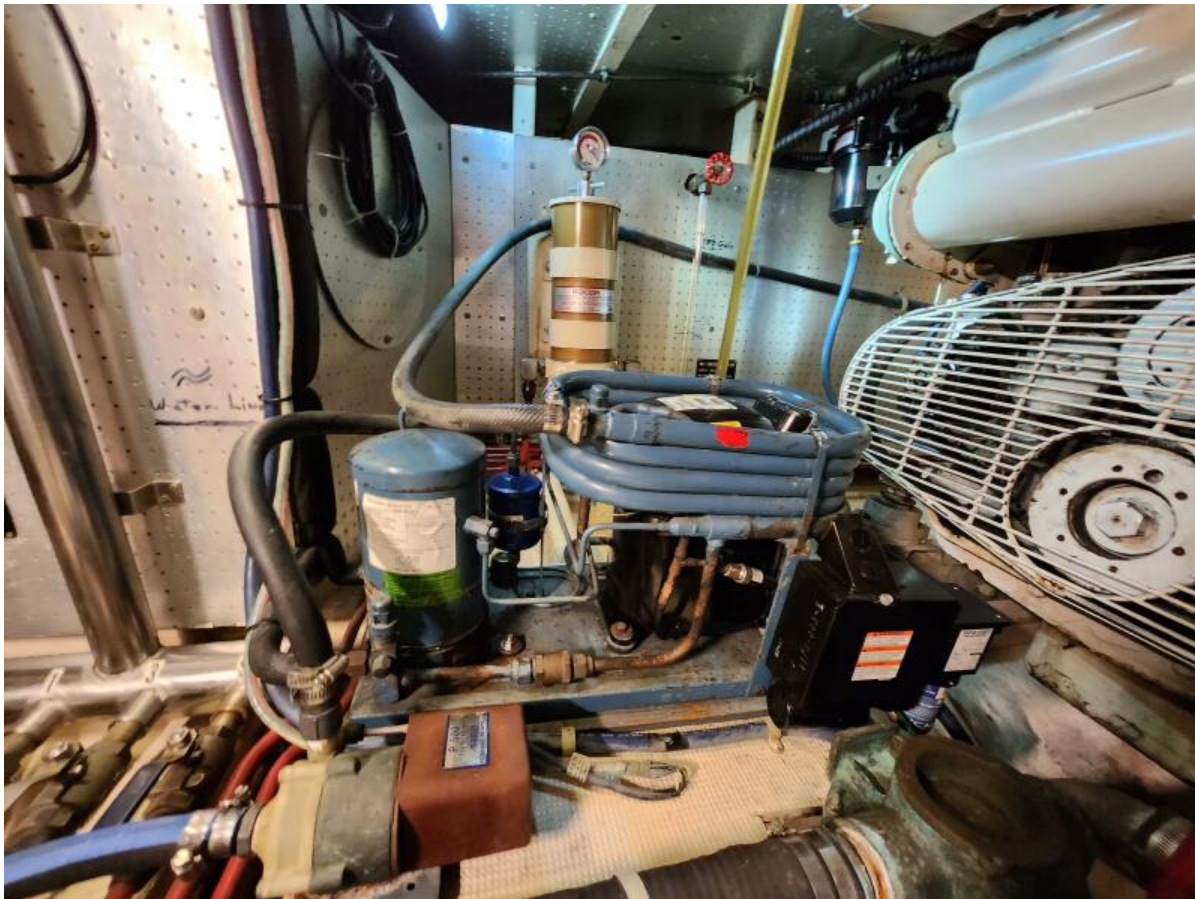
Engine Room Panning Forward



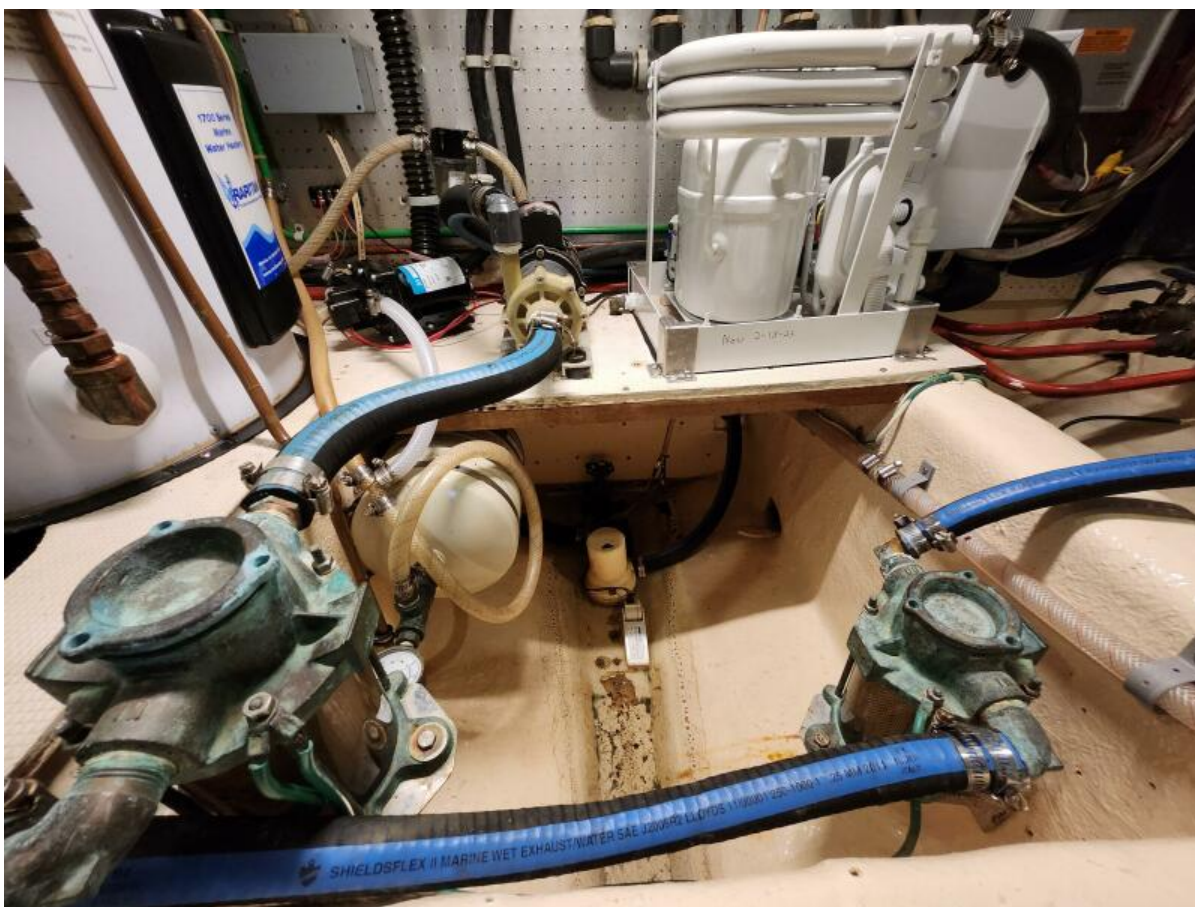
Engine Room Panning Forward



Engine Room Panning Forward



Engine Room Panning Forward



Engine Room Forward Bilge



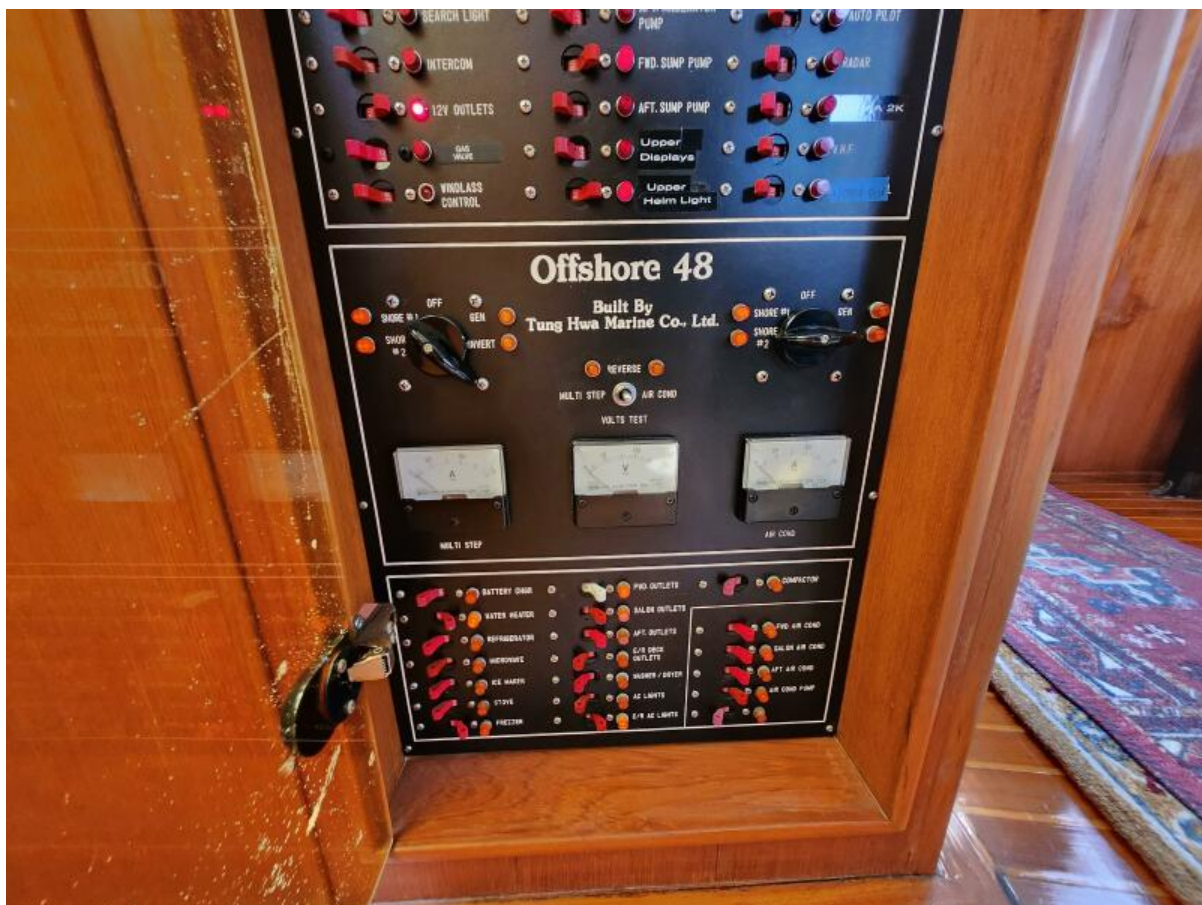
Engine Room Aft



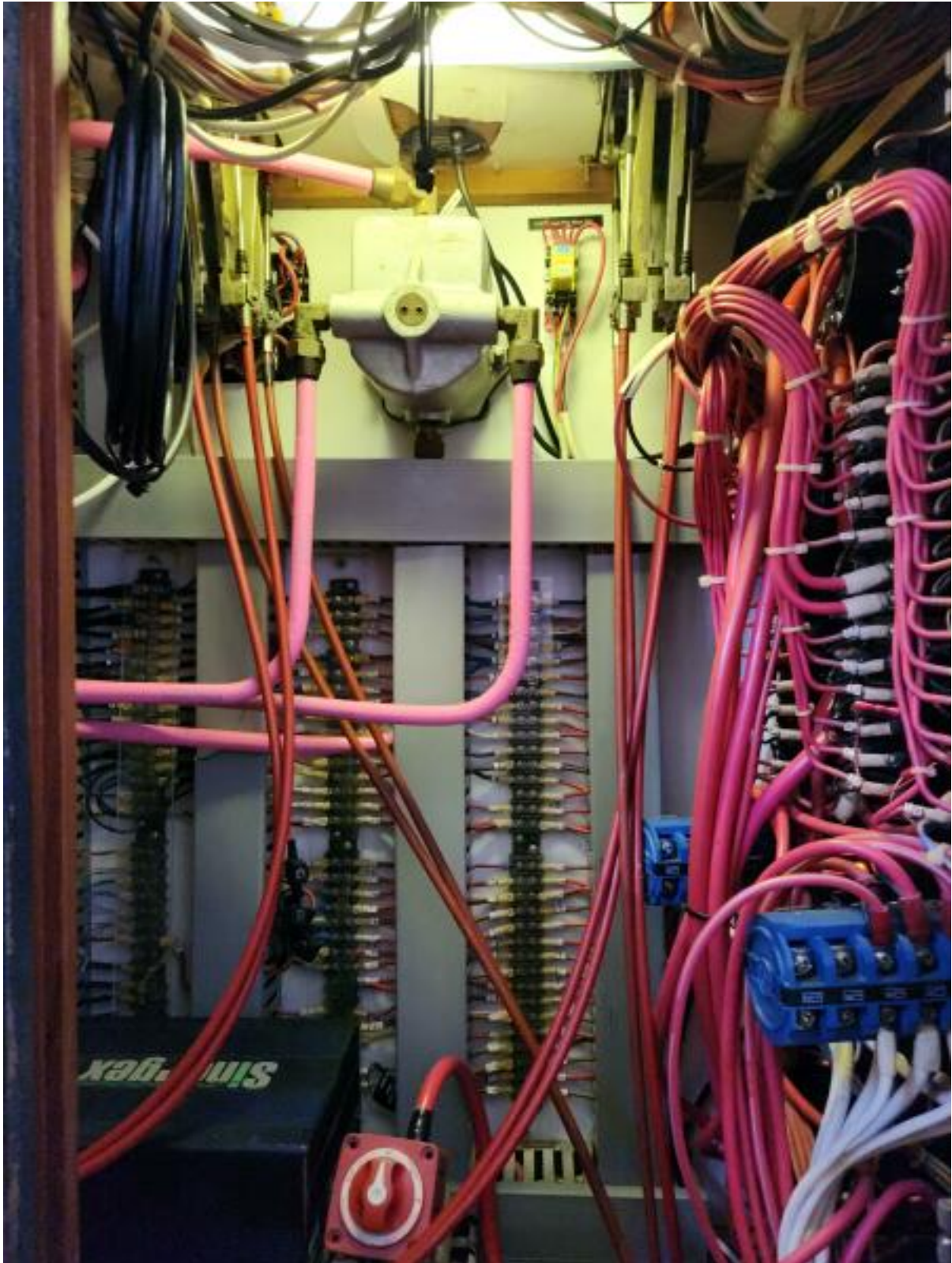
Generator



Breaker Pannel , 12V



Breaker Panel, 120V



Wiring



Wiring



Inverter

252-474-6000



Screens for Portlights