



FAMILY MATTERS

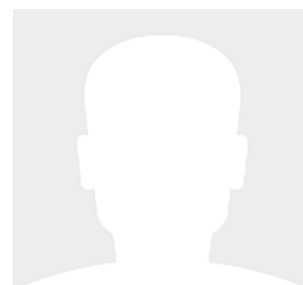
40' (12.19m) 2022 Formula 400 Super Sport Crossover
Boca Raton Florida United States



OVERVIEW

\$995,000

Manufacturer:	Formula	Hull Material:	Fiberglass
Engines:		Cruise Speed:	
Engine Model:		Max Speed:	
Engine HP:		Cabins/Heads:	/ 1
Beam:	12' 0"	Fuel Type:	Gas/Petrol
Max Draft:	3' 4"	Fuel:	400 G (1514.16 L)
Water:	56 G (211.98 L)		





Data Sheet

Category: Cruisers

Condition: Used

Model Year: 2022

Beam: 12' (3.66m)

Max Draft: 3' 4" (1.02m)

LOA: 40' (12.19m)

Single Berths: 4

Heads: 1

Fuel Type: Gas/Petrol

Deadrise: 21°

Hull Material: Fiberglass

Bridge Clearance: 10' 7"

Dry Weight: 23700 lbs

Fuel Tank: 400 gal (1514.16 liters)

Fresh Water: 56 gal (211.98 liters)

Holding Tank: 53 gal (200.63 liters)

Engines/Generators



Summary/Description

This 2022 Formula 40' 400 Super Sport Crossover is in pristine condition. Equipped with a SeaKeeper 6 Gyro Stabilizer and quad Mercury Verado 400s with Joystick, this 400SSC offers luxurious comfort in a sporty package capable of reaching speeds up to 60mph.

Indoor stored since new, this 2022 Formula 40' 400 Super Sport Crossover is in pristine condition. Blurring the lines between an open day boat and a larger motor yacht, this 400 SSC's versatile and multi-purpose layout as well as its desirable options list make it an ideal boat for entertaining with family and friends, watersports, as well as longer overnight stays.

The 400 SSC cabin accommodations and amenities are unprecedented in an open bow design, including a convertible dinette/sleeping berth plus aft stateroom bed, stand-up private head compartment and entertainment galley with sink and microwave. Equipped with a SeaKeeper 6 Gyro Stabilizer and quad Mercury Verado 400s with Joystick, this 400SSC offers luxurious comfort in a sporty package capable of reaching speeds up to 60mph.

Notable Features & Options

- Crystal Blue Metallic / Midnight Blue Metallic Paint
- Full Hullside Flagship Fusion Graphic B
- Quad Mercury Verado 400s w/ Joystick Piloting
- White Verado Engines w/ Color Matched Cowling Paint
- Seakeeper 6 Gyro Stabilizer.
- 7.5kW Westerbeke Gas Generator
- Bow Thruster
- Raymarine Electronics (Twin Axiom 19" MFDs w/ 4Kw Magnum Radar)
- FLIR M232 Thermal Camera
- JL Audio Speaker Upgrade
- Cockpit A/C (18000 Btu)
- Satellite TV Hd System
- Cockpit HDTV w/Blu-Ray
- Aft Cabin HDTV w/Blu-Ray
- Wireless iPad Digital Switching Control
- Aft Cockpit Molded-in Cooler
- Aft Cockpit Electric Grill
- Underwater LED Lights
- LED Spreader Lights
- LED Bow Docking Lights
- Yeti Tundra 35 Cooler w/Pull-out Drawer
- Swim Platform Sport Station w/Drink Holders
- SureShade Electric Power Retractable Sunshade
- Bow & Cockpit Seating Cover
- Aft Enclosure



Accommodations

- Dash-integrated cabin door
- Solid wood cabin entry steps
- Walnut, Washed Oak, Baltic Birch or Gray Wash woodgrain-finish flooring throughout cabin
- Oversized Bomar cabin venting hatch w/integrated OceanAir® rollout SKYscreen & privacy shade
- Blue LED & accent lighting throughout cabin
- Ultraleather™ lounge w/dual-height, Open-Grain Walnut, Open-Grain Driftwood or high-gloss Ash or Wenge wood dining table w/filler cushions
- Custom décor pillows & draperies
- Poseidon pleated blind systems
- 12,000 BTU reverse cycle air conditioner w/digital touch control
- Illuminated 120V & 12V electrical panels
- Four 6 1/2" speakers
- Four dual USB charging ports – lounge (2) & aft cabin (2)
- Aft cabin w/privacy curtain, queen-size memory foam bed w/storage at foot, pillow shams & upholstered headboard w/storage
- Portside storage w/pullout Isotherm 120V/12V stainless refrigerator, additional drawer storage, cedar-lined hanging locker & fire extinguisher
- Electronics pylon w/Rockford Fosgate stereo remote control, air conditioning control & light switches
- Complete galley in Open-Grain Walnut, Open-Grain Driftwood or high-gloss Ash or Wenge finish w/storage & hardwood dovetailed drawer, full Corian countertop, Corian sink w/glide-away Corian self-cover, microwave, concealed trash container & water level gauge
- Main cabin 32" LED/LCD HDTV w/Blu-ray player w/WiFi & remote HDMI/USB connections
- Demand water system w/56-gallon capacity & one-point water fill for freshwater tank and/or city water
- 120V water heater
- Molded private head compartment w/vanity, Open-Grain Walnut, Open-Grain Driftwood or high-gloss Ash or Wenge finish lower doors, Corian countertop, custom-molded sink w/Moen® faucet, porcelain Flush and Forget® VacuFlush® head w/43-gallon holding tank & dockside pumpout, shower, exhaust fan & night light
- Automatic cabin bilge pump w/high water alarm

Deck & Hull

Exterior

- NMMA Yacht Certification
- Transferable 5-Year Formula Guard® Limited Protection Plan w/10-year Structural Warranty (USA only) • Ashland Maxguard™ LE gelcoat
- Standard graphic in A, B or C w/Axalta™ Chroma Premier® base-coat & Imron® Elite clear-coat
- FAS3TECH hull w/foam-filled continuous molded structural grid
- Chemically bonded & thru-bolted deck-to-hull joint
- Heavy-duty PVC gunwale w/stainless insert
- Concealed electric windlass w/digital chain counter, 150' chain, polished stainless anchor, yacht-design thru-hull stowage & freshwater anchor wash-down system
- Remote-control ACR LED searchlight
- Stainless hardware & 316L welded rails
- Stainless custom Formula logo-cast cleats (12), fuel fills, polished engine room vent grilles, polished port lights w/screens (2) & oversized port light (1)
- Coupe top w/tinted, tempered windshield w/windshield wiper, sliding port walk-thru windshield panel & sport coupe side wings w/Lexan® side connectors & side vents, large, motorized coupe-top Taylor Made® glass sunroof



w/Poseidon retractable sunshades and soft panels, blue LED accent lighting, dual flagstaff, American & Formula flags & white dual air horn

- Rockford Fosgate® waterproof transom-mounted stereo control & two 6 1/2" JL Audio® blue LED lighted chrome-finished speakers
- Cockpit blue LED lighting system
- Woodgrain vinyl decking on swim platform
- Integrated swim platform w/removable stainless swim ladder, retractable safety ladder & pull-up cleats
- 120V shore-power w/fail-safe galvanic isolator & two 30-amp cords
- Polished stainless shore-power & cable TV inlets, transom shower w/hot/cold controls & chrome-finished city water inlet

Cockpit

- Continuous molded deck & cockpit liner
- Molded composite dash in Charcoal or Mocha w/Floating Liquid Black panels, Ritchie® compass, dual Raymarine® Axiom 12 GPS widescreen color chartplotters w/digital depth sounder, illuminated waterproof accessory rocker switches, E-T-A® circuit breakers, auxiliary 12V outlet, three dual USB charging ports, wireless phone charger, tilt wheel in leather wrapped stainless, lockable dash storage compartment, padded mobile device station w/dual USB charging port & blue LED accent lighting
- Mercury Digital Throttle & Shift (DTS) controls w/SmartCraft® VesselView®
- Mercury® Joystick Piloting for Outboard (JPO) w/Active Trim
- Digital switching
- Safety ignition tether & Bennett® AutoTrim Pro trim tab control & indicators
- Rockford Fosgate AM/FM stereo w/iPod/USB port, Bluetooth®, dash-mounted stereo control w/full color display, six hardtop & four cockpit 6 1/2" JL Audio blue LED lighted chrome-finished speakers, aux input, 600W stereo amplification & 200W subwoofer
- Subscription-ready SiriusXMTM Satellite Radio
- Five dual USB charging ports – 2 in aft cockpit, 2 in bow & 1 at sunpad
- 25 polished stainless drink holders
- Cockpit/swim platform blue/white LED courtesy lights w/remote control
- Integral 316L safety rails
- Weather-resistant cockpit seating featuring Pre-Fixx® coating, Tenara® element-resistant thread, DriFast® foam & StarLite® XL synthetic marine panel construction
- Individual sit, stand or rest position triple helm & companion seats
- Two full-width helm footrests
- Dash multi-port ventilation system
- Modular bow seating/sunpad system w/triple-wide forward facing bow seating & dual armrest w/two Corian accented drink holders
- Two color-coordinated dual-height Corian bow tables w/filler cushions
- Under-cushion bow storage w/trash container, molded-in cooler & table storage
- Dedicated acrylic wind breaker panel
- Portside gear lockers (2) w/dedicated storage for dock lines & optional TV
- Color-coordinated cockpit galley w/custom-molded sink, Corian countertop, 120V/12V pullout cockpit refrigerator w/stainless front, trash container, paper towel holder & 120V GFCI outlet
- Galley pantry w/fire extinguisher & Cuisinart blender on door
- Portside & U-shaped aft lounges w/storage
- Powered, adjustable-height cockpit table w/woodgrain vinyl decking top, fitted Ultraleather™ table cover & filler cushion
- Aft-facing sun lounge w/multi-position backrests w/cushions & fender (4 included) storage below



- Disconnect switches for aux & start batteries
- Battery parallel emergency switches
- Woven cockpit mat
- Stainless transom gate w/inset acrylic panel
- Aft cockpit enclosure w/easy-mount zippers in color-coordinated non-fading Sunbrella® fabric w/Seamark™ vinyl undercoating

Electronics & Navigation

- Raymarine Twin Axiom XI 19 GPS Chartplotters
- Raymarine Magnum Radar
- Flir™ M232™ Marine Thermal IR Camera
- Marine VHF
- KVH Satellite Television System

Electrical Systems

- 7.5 kW /120 Volt Westerbeke Low CO Gas Generator with battery 185.2 Original Hours of use
- SEAKEEPER 6® Gyro Stabilizer - Run Hours: 123 Sea Hours: 83
- 12V/110V

Selected Options

