



Manana

40' (12.19m) 1987 Marine Trader LaBelle Sundeck
Jensen Beach Florida United States



OVERVIEW

\$155,000

Manufacturer: *Marine Trader*
Engines: 2 Volvo Penta
Engine Model: TAMD41A
Engine HP: 200
Beam: 13' 6"
Max Draft: 3' 6"
Water: 200 G (757.08 L)

Hull Material: Fiberglass
Cruise Speed: 9 Knots
Max Speed: 15 Knots
Cabins/Heads: 2 / 2
Fuel Type: Diesel
Fuel: 350 G (1324.89 L)



Ted Soch ted@curtisstokes.net

561 929 3199

Data Sheet

Category: Trawlers
Subcategory: Trawlers
Condition: Used
Model Year: 1987
Beam: 13'6" (4.11m)
Max Draft: 3' 6" (1.07m)
LOA: 40' (12.19m)
Cabins: 2
Sleeps: 6
V Berths: 1
Double Berths: 1
Queen Berths: 1
Head Room: 6' 6"
Heads: 2

Maximum Speed: 15 Knots
Cruise Speed: 9 Knots
Fuel Type: Diesel
Hull Material: Fiberglass
Air Conditioning: Yes
Bridge Clearance: 17' 11"

Displacement: 25000 lbs
Bow Thruster: Yes
Stern Thruster: Yes
Fuel Tank: 350 gal (1324.89 liters)
Fresh Water: 200 gal (757.08 liters)
Holding Tank: 60 gal (227.12 liters)
Exterior Color: white
HIN/IMO: ETY40162A787

Engines/Generators

Engine 1

Volvo Penta
TAMD41A
Inboard
200HP
149.14KW
Fuel: Diesel
Hours: 1245
Hours Date: 11-17-2023
Year: 1987
Location: Port

Engine 2

Volvo Penta
TAMD41A
Inboard
200HP
149.14KW
Fuel: Diesel
Hours: 1200
Hours Date: 11-17-2023
Year: 1987
Location: Starboard

Generator 1

Onan
8KW
Hours: 1600

Summary/Description

The current owners have spent well over \$100,000 renovating this vessel.

Manana was owned by a single family until her current owners bought her in March, 2021. Since purchasing Manana, they have spent the entire time updating and preparing her for cruising. Unfortunately, health issues have forced them to put her on the market.

The entire exterior of Manana was professionally repainted by the current owners in 2022. The bottom was also painted in April 2023 when Manana was on the hard. The teak interior has been cleaned and polished and there are no current leaks. The owners have also updated the all of the electronics on the flybridge and had the engine and generator serviced. They added a dinghy and davit system and redecorated the entire interior with new furniture and decor. They replaced all of the galley appliances, painted the heads, updated the safety equipment, replaced all of the head and galley fixtures and replaced all of the aft deck furniture. Manana is ready for it's next Captain!

40' Marine Trader Walk-Through

Manana can be boarded through an opening in the hand rail from both her starboard and port sides. A starboard side sliding door leads into the salon at the inside helm. Double teak doors open into the salon from the aft deck. The flybridge is four steps up from the aft deck. There are six steps down to the swim platform through a transom door to port on the aft deck.

The ensuite master stateroom is aft of the salon, four steps down. The galley is forward of the salon, four steps down to port. The dinette is across from the galley, to starboard, on the same level. The guest stateroom with an ensuite split head is forward of the dinette and galley. Engine room access is through the removable hatches in the salon floor or through an opening hatch under the galley steps.

The headroom in the salon is 6'6", 6'5" in the galley, 9', in the guest stateroom, 6'6" in the guest shower, 6'4" in the master stateroom, 6'7" in the master stateroom shower and 6'5". The master stateroom berth is 6'8" long and the guest stateroom berth also 6'8" long.

40' Marine Trader Salon

There are four large screened windows that slide open for ventilation. All of the windows have new white honeycomb one-finger shades and removable blue sun screens that are mounted on the exterior. The salon headroom is 6'6". The salon has its own Cruisair reverse cycle AC/heating unit. The four ceiling fixtures were all replaced with LED bulbs and courtesy lights were added in 2021.

All of the decor is new since March 2021. There are teak handholds on the ceiling and two stainless handholds at the starboard side exterior door. There is storage in the step at this door.

40' Marine Trader Accommodations

Manana has a full-beam stateroom aft with a queen size berth and an ensuite head with a shower. The guest stateroom forward has a full size berth on the starboard bulkhead with an ensuite split head. The dinette converts to an additional berth.

40 Marine Trader Lower Helm

The operational lower helm station is to starboard.

40' Marine Trader Galley

The galley is forward of the salon, four steps down to the port. The sole is teak & holly. The owners updated the galley to include a Norcold N4000 12/110v refrigerator/freezer, a Kenyon 3 burner ceramic cooktop, a Muave' microwave/convection oven/grill, a gray "marble" Formica countertop, a Seagull IV water filtration system, a large composite sink and a mixer faucet with pull-down hose. They also added a built in pull-out spice rack next to the microwave, a utensil rack over the cooktop, two large storage drawers under the cooktop and recessed LED lighting. The galley ware, pots and pans, plastic drinkware and utensils are all included. They have all had minimal usage.

40' Marine Trader Dinette

The teak and holly sole continues into the dinette from the galley. There is a tri-fold teak table between the banquettes. The table converts to an additional berth with a cushion.

40' Marine Trader Master Stateroom

The master stateroom has a teak and holly sole, a walk-around queen size berth with decorator bedding (new in March 2021) included with the vessel, three LED ceiling light fixtures, two reading lights over the berth and ample storage including a 3/4 length lighted locker, drawers and shelves. The headroom is 6' 7". There are two large opening windows with screens to port, one large opening window with a screen to starboard and a 20" x 20" opening hatch behind the berth. There are also two additional windows behind the berth with screened portlights. Other amenities in the master stateroom include a full-length wall mounted mirror, a Cruisair reverse cycle AC/heating unit, a large dresser top with a mirror and a shelf in front of the windows for additional storage or decor. The master head is ensuite with an enclosed shower stall.

40' Marine Trader Guest Stateroom

The guest stateroom offers a full size berth with decorator bedding (never slept on), a 20" x 20" hatch over the berth, its own Cruisair reverse cycle AC/heating unit and a screened portlight. The headroom is 6'6". There are cabinets, drawers, a 3/4 length locker, a lighted storage space under the berth and access to the anchor locker. There is an ensuite split

head with a separate wet head. The headroom is 6'4". There is a teak lattice floor grate, a new shower head, an LED ceiling light, an opening portlight and a storage cabinet. The electric head has a new pump assembly.

40' Marine Trader Deck and Hull

The entire exterior of Manana was professionally painted in May 2021. The non-skid deck has a nice grid pattern. The bottom was painted in April 2023. The handrails are also painted white so there is no exterior teak to maintain. The current owners replaced the lifeline. Manana is professionally washed monthly. The bottom is cleaned monthly by a professional diver.

40' Marine Trader Foredeck

The foredeck features:

- two double fender racks
- teak burgee pole
- stainless steel Samson Post
- Powerwinch 603 windlass
- 20 kg Danforth style anchor with 300' 5/8" rode
- stainless steel chafe guard at each cleat
- dual trumpet horns

40' Marine Trader Aft Deck

The aft deck has a patterned ceiling with a very unique design that you must see.

The aft deck includes:

- four stainless steel hawse pipes
- two "rocket launcher" style rod holders
- five stereo speakers
- dimmable ceiling light added by current owner
- Magma propane grill
- bell
- pass-through to the flybridge

The deck box stores (all items are conveyed with the vessel):

- propane tank for the Magma grill
- fold-up handicap ramp
- Kent life vests
- ditch bag
- exterior decor pillows
- storage covers

The following furniture (all conveyed with the vessel):

- two Midland patio chairs by Ziploc design with canvas cushions and protective covers (\$600 each)
- Lucaya double ottoman with a Sunbrella fabric cushion with a protective cover (\$470)
- all-weather wicker deck box with two attached cushions

- two mounted stainless steel HYDDNice cup holders
- outdoor rug
- small end table

40' Marine Trader Flybridge

The flybridge has an openness that allows for good visibility. The flybridge is equipped with the following:

- lighted radar arch that can fold either forward or aft
- stainless steel rails
- storage cabinets
- L-shaped settee with dark blue canvas cushions with storage beneath
- Todd's captain's chair with a new cover
- new helm cover to keeps the electronics out of the elements
- Norcold beverage refrigerator
- chart storage
- courtesy lights and speakers

40' Marine Trader Audio/Visual Equipment

- Samsung 26" Smart TV - 2021
- Pyle PT7968T Multi-function receiver - 2021
- Onkyo PX-C390 6-disc CD player - 2021
- four Samsung speakers in the salon
- nine speakers on the flybridge (five on the aft deck and four on the flybridge)

40' Marine Trader Electronics

- (2) GPS 1223xsv Map Sounder
- Garmin GMR 424hd2 Radar
- Garmin GXM 54 Weather Antenna
- Airmar B774v Transducer
- (3) Garmin GC12 Cameras - 2 in the engine room and 1 on the stern
- 12" Radar Pedestal
- Garmin G3 Vision Chip - Jacksonville, FL to Bahamas
- Garmin Reactor 40 Hydraulic Core Pack with Smart Pump Autopilot
- Garmin GRF10 Rudder Feedback and Extension Cable
- Richie Compass
- Axis Single Channel Encoder
- Depth Finder
- Garmin Port Expander
- One empty dome on the radar arch for symmetry

40' Marine Trader Engine and Mechanical

- (2) Volvo TAMD41A Inboard Diesel Engines, 200hp, Direct Drive with approximately 1200 hours
- Port and Starboard Rudder Packing Glands - replaced since April 2023

- Port and Starboard Cutlass Bearings - replaced since March 2021
- (2) Engine Water Pumps - replaced since March 2021
- All hull and shaft zincs - replaced since April 2023
- Oil changed - replaced July 2023
- All hull and engine anodes - replaced April 2022
- Valves and Injector Timing - adjusted August 2023
- New Turbos - 2022
- All onboard Batteries - replace in 2023
- Bow and Stern thrusters each have their own separate battery and battery charger

40' Marine Trader Electrical

- (2) 30 Amp Power Cords with (2) 30 Amp Inlets
- Onan 8kw generator with approximately 1,600 hours - complete service and maintenance performed by current owners since March 2021

40' Marine Trader Plumbing

- (2) Electric Heads - Macerator Pump Assemblies replaced since March 2021
- Hot Water Heater - new since March 2021
- (4) Bilge Pumps - replaced since March 2021
- Water Pump - replaced since March 2021
- Plastic Grey Water Tank

40' Marine Trader Safety Equipment

- (3) Smoke and CO Detectors - all replaced since March 2021
- Portable Fire Extinguishers - all current
- (6) Kent Type 1 Life Jacket Style PFD (Approx. \$70 each) - new since March 2021
- Throwable Orange Life Ring - new since March 2021
- ACR Global Fix v4 EPIRB Category 1 - new since March 2021
- Ditch bag and contents including handheld EPIRB and GPS - new since March 2021
- Stainless Steel Railing Lines - new since March 2021
- (2) Boat Hooks - new since March 2021
- All new lines since March 2021
- Ditch bag containing a hand held Radio, GPS, EPIRB, Emergency Flairs and 4 days of Food & Water

40' Marine Trader Dinghy

2021 Newport Vessels Inflatable Dinghy, 11' 9" with cover, storage bag and storage bag for the seats

2022 Suzuki 15hp Motor

Minimal Usage

40' Marine Trader Dinghy Davit System

Custom transom mounted Dinghy Butler (Made in Maine) Davit System with Remote Control - New 2022

4,000 lb. Winch with Dedicated DC breaker - New 2022

40' Marine Trader Bridge Clearance

Bridge Clearance: Top of Bimini: 15' 2"

Top of Anchor: 17' 11"

With Mast and Bimini Lowered: 14' 5"

40' Marine Trader Exclusions

Unless specifically stated as conveying with the vessel, the personal items of the sellers are excluded from the sale.

40' Marine Trader Disclaimer

The company offers the details of this vessel in good faith but cannot guarantee or warrant the accuracy of this information nor warrant the condition of this vessel. A buyer should instruct his agents, or his surveyors, to investigate such details as the buyer desires validated. This vessel is offered subject to prior sale, price changes or withdrawal without notice.

Engine and generator hours are as of the date of the original listing and are a representation of what the listing broker is told by the owner and/or actual reading of the engine hour meters. The broker cannot guarantee the true hours. It is the responsibility of the purchaser and/or his agent to verify engine hours, warranties implied or otherwise and major overhauls as well as all other representations noted on the listing brochure.



40' Marine Trader



40' Marine Trader



40' Marine Trader



Galaxy S21 Ultra 5G

40' Marine Trader Dinghy and Davit System



40' Marine Trader Fore Deck



40' Marine Trader Portside Walkaround



40' Marine Trader Anchor & Windless



Galaxy S21 Ultra 5G

40' Marine Trader Forward window shades



40' Marine Trader Covers for Flybridge Helm Station



40' Marine Trader Flybridge Guest Seating



40' Marine Trader Flybridge Guest Seating



40' Marine Trader Flybridge Helm Station Covers



Galaxy S21 Ultra 5G

40' Marine Trader Sundeck Roof



Galaxy S21 Ultra 5G

40' Marine Trader hinged radar arch



40' Marine Trader Garmin 1223xsv Map Sounder



40' Marine Trader Garmin 424hd2 Radar Monitor



Garmin Autopilot



40' Marine Trader VHF Radio



Galaxy S21 Ultra 5G

40' Marine Trader Gauge Dashboard



40' Marine Trader bow & stern trim tab control knobs



Galaxy S21 Ultra 5G

40' Marine Trader Electronics dashboard



Galaxy S21 Ultra 5G

40' Marine Trader Flybridge helm refrigerator



Galaxy S21 Ultra 5G

Flybridge Helm Wheel



Galaxy S21 Ultra 5G

40' Marine Trader Sundeck



Galaxy S21 Ultra 5G

40' Marine Trader dinghy & davit system



40' Marine Trader sundeck



40' Marine Trader Magna gas grill



40' Marine Trader Sundeck furniture covers



40' Marine Trader Manufactures Plaque



40' Marine Trader Control Panel



Galaxy S21 Ultra 5G

40' Marine Trader Pilothouse Helm Station



Galaxy S21 Ultra 5G

40' Marine Trader main salon looking aft



40' Marine Trader Main Salon looking forward



40' Marine Trader Main Salon looking forward



Galaxy S21 Ultra 5G

40' Marine Trader looking forward from main salon



40' Marine Trader Dinette



40' Marine Trader Galley



Galaxy S21 Ultra 5G

40' Marine Trader Microwave / Convection Oven



Galaxy S21 Ultra 5G

40' Marine Trader Galley pass through to main salon



40' Marine Trader Norcold Refrigerator/Freezer



Galaxy S21 Ultra 5G

40' Marine Trader 3 burner ceramic cooktop with dish drawer



Galaxy S21 Ultra 5G

40' Marine Trader large composit sink



40' Marine Trader Integrated Spice Rack



40' Marine Trader Entrance to Master Stateroom



Galaxy S21 Ultra 5G

40' Marine Trader Master Stateroom



Galaxy S21 Ultra 5G

40' Marine Trader Master Stateroom



40' Marine Trader Master Stateroom



40' Marine Trader Master Stateroom Closet



40' Marine Trader Master Stateroom Shower



40' Marine Trader Master Stateroom Vanity



40' Marine Trader Master Stateroom Vanity



40' Marine Trader Master Stateroom Head



Galaxy S21 Ultra 5G

40' Marine Trader Master Stateroom Drawers



40' Marine Trader Stairs



40' Marine Trader Forward Cabin



Galaxy S21 Ultra 5G

40' Marine Trader forward bathroom sink



Galaxy S21 Ultra 5G

40' Marine Trader Forward Head



Galaxy S21 Ultra 5G

40' Marine Trader Hot Water Heater



Galaxy S21 Ultra 5G

40' Marine Trader Inverter



40' Marine Trader Starboard Engine



40' Marine Trader Starboard Engine



40' Marine Trader Engine Port Engine

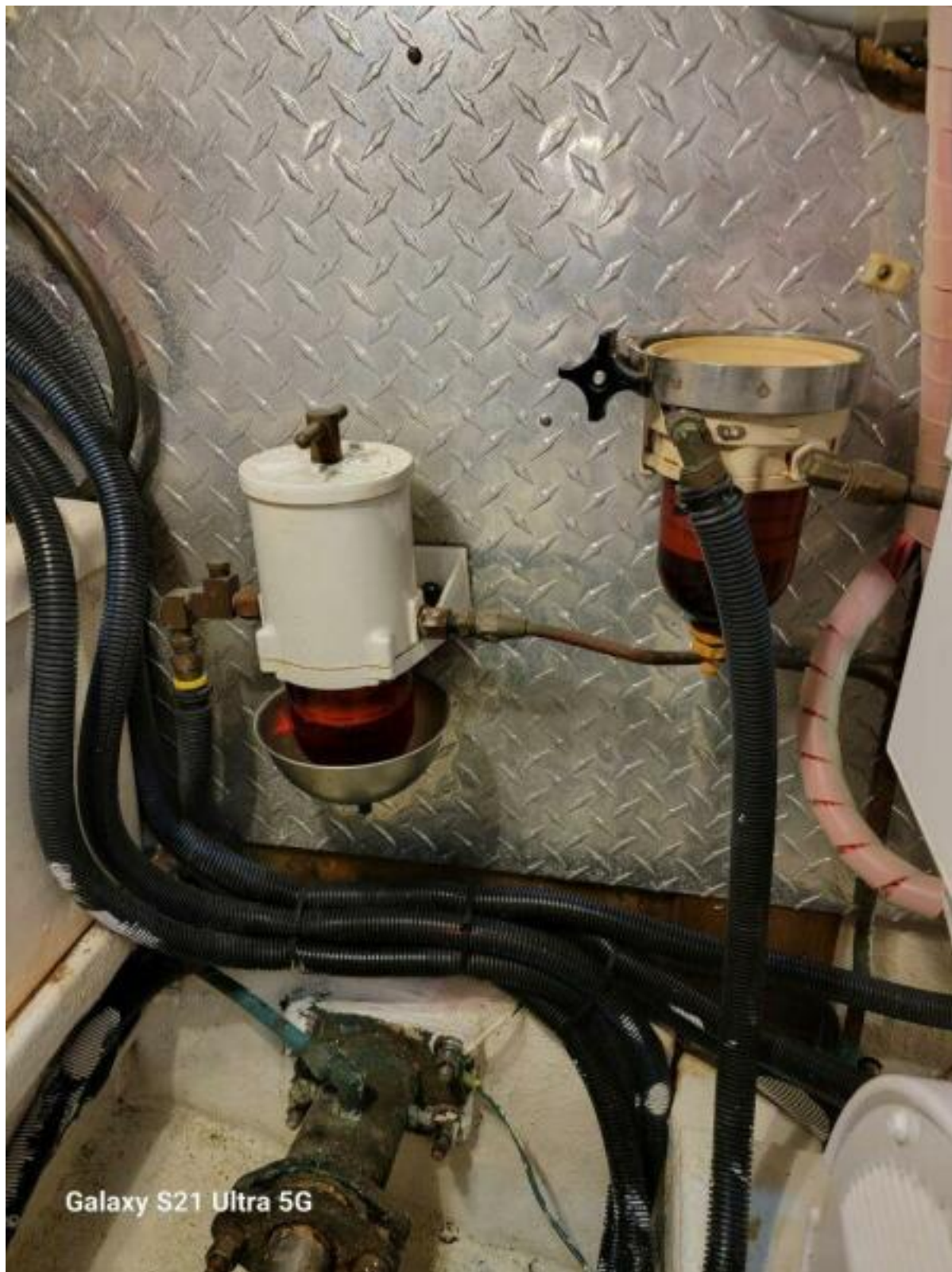


40' Marine Trader Port Engine



Galaxy S21 Ultra 5G

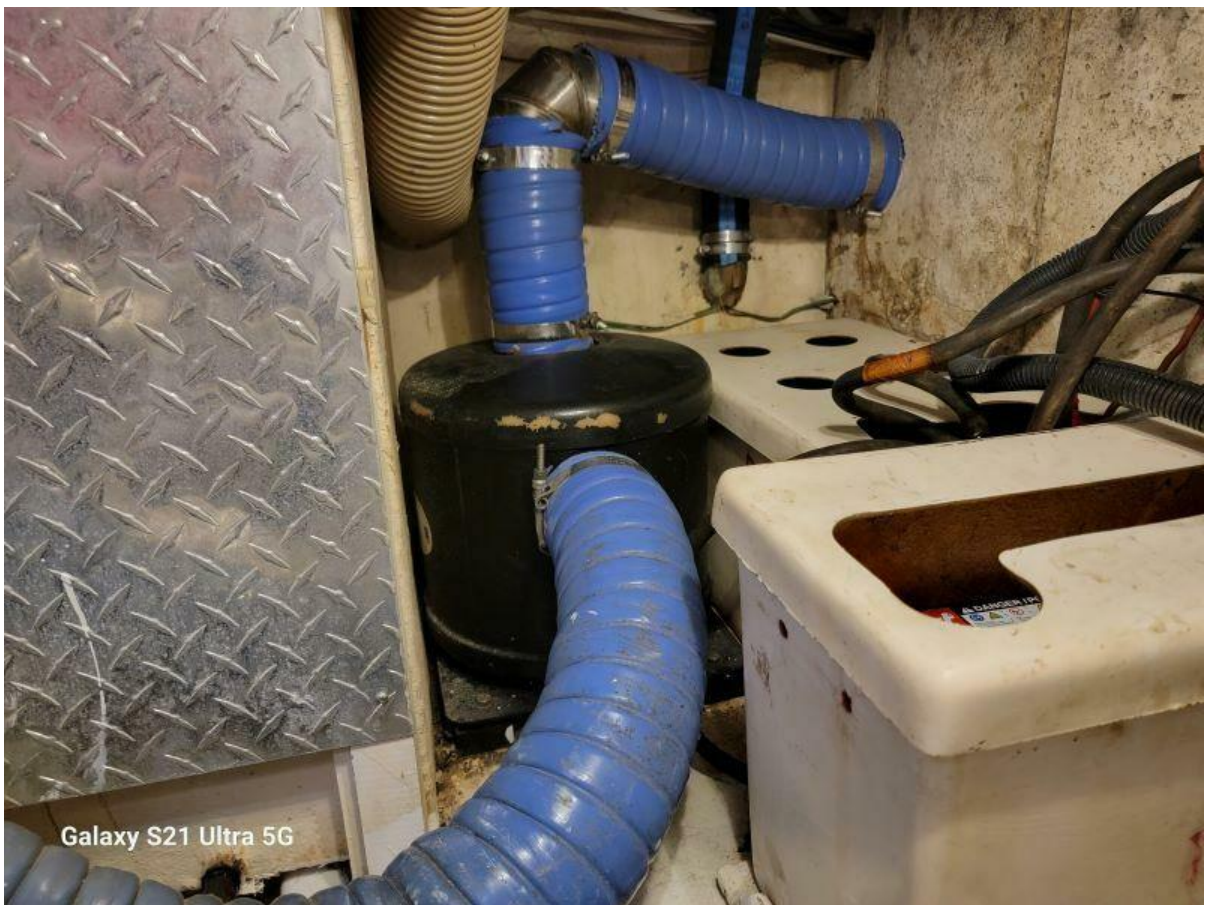
40' Marine Trader Onan 8kw Generator



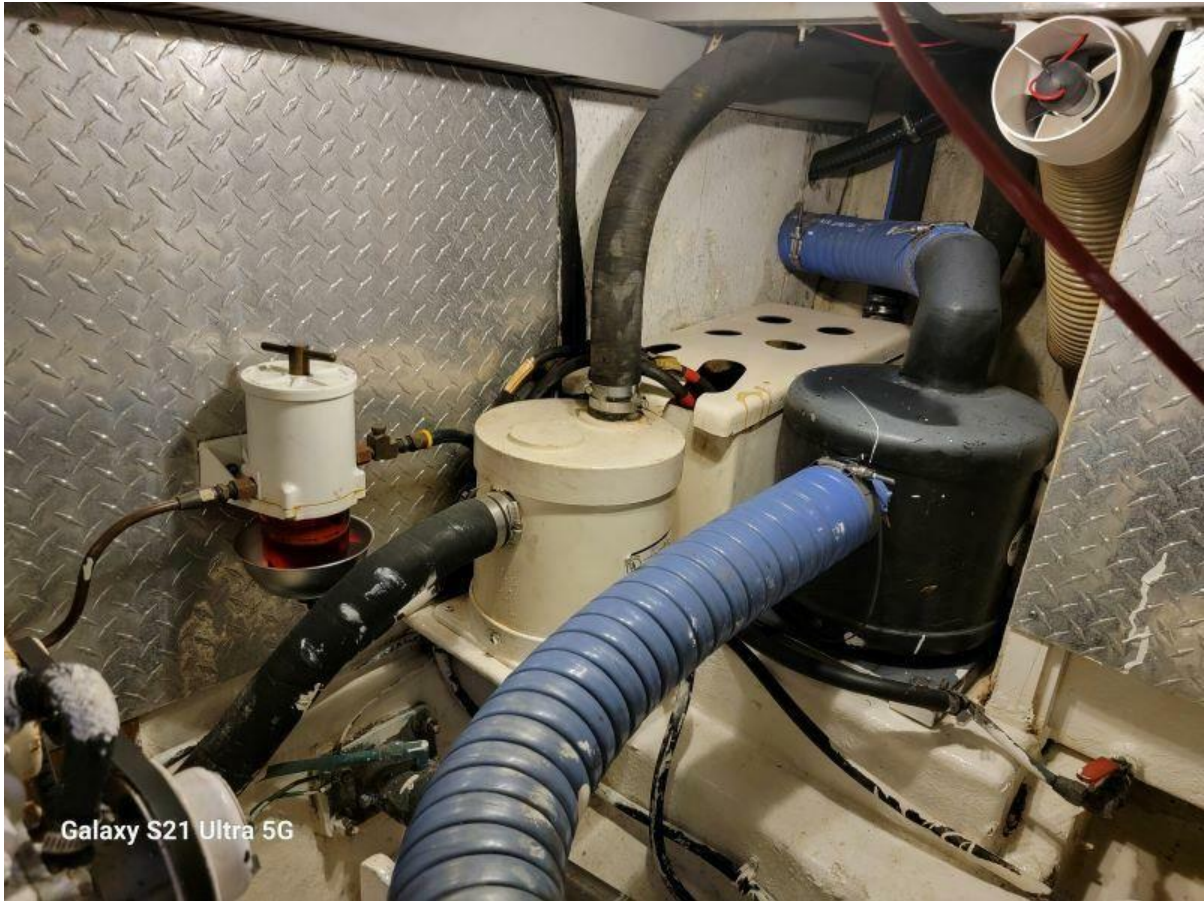
40' Marine Trader Racor



40' Marine Trader direct drive shaft



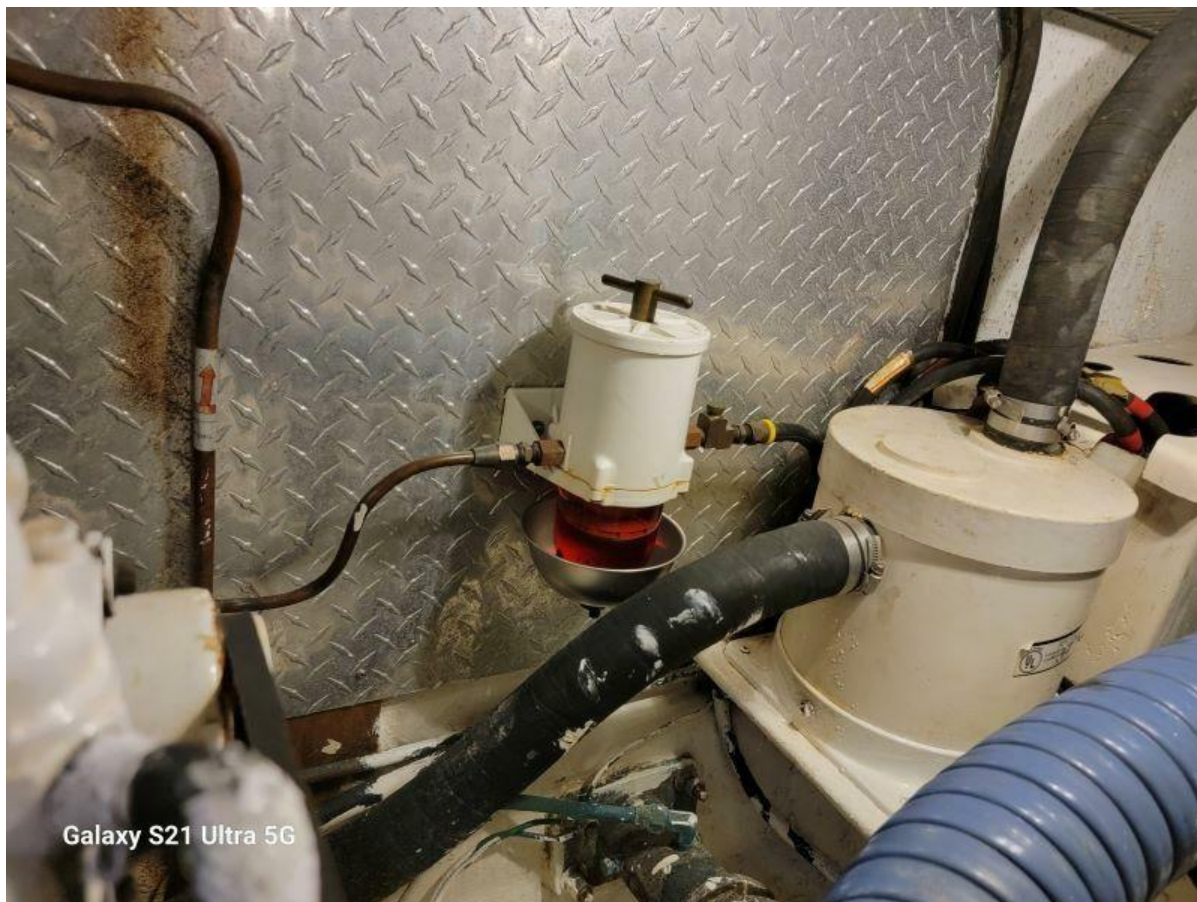
40' Marine Trader Exhaust



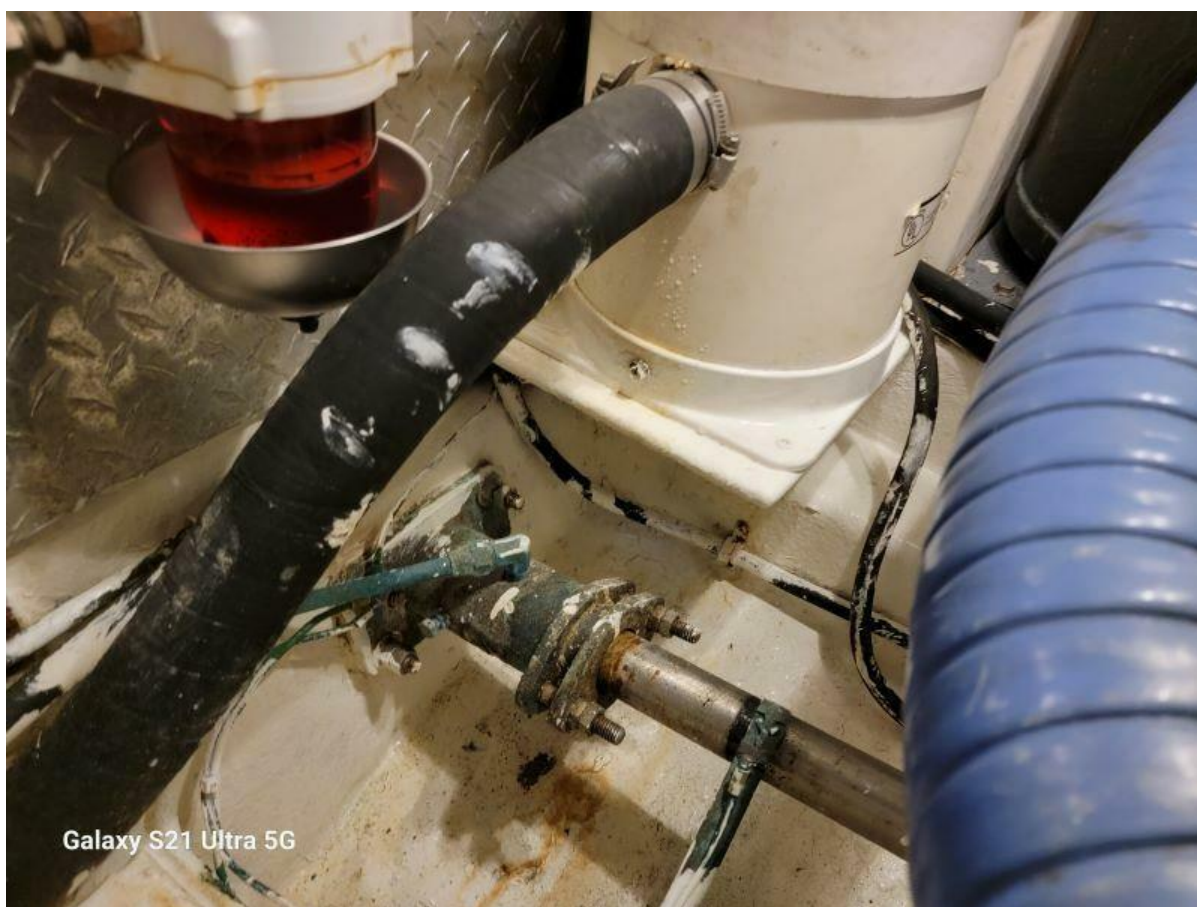
40' Marine Trader Exhaust



40' Marine Trader Engine Room Ventilation Fan



40' Marine Trader Port Side Racor



40' Marine Trader Port Side Direct Drive Shaft



40' Marine Trader Port Side Direct Drive Shaft