



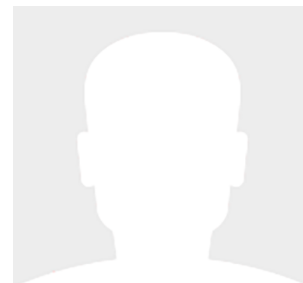
54' (16.46m) 2024 Aquila
Dania Beach Florida United States



OVERVIEW

\$2,599,000

Manufacturer:	<i>Aquila</i>		
Engines:	2 Volvo	Hull Material:	PVC
Engine Model:	D6-310	Cruise Speed:	Knots
Engine HP:	480	Max Speed:	Knots
Beam:	25' 2"	Cabins/Heads:	4 / 4
Max Draft:	4' 6"	Fuel Type:	Diesel
Water:	238 G (900.93 L)	Fuel:	581 G (2199.32 L)





Data Sheet

Category: Catamaran
Subcategory: Motor Yachts
Condition: New
Model Year: 2024
Beam: 25'2" (7.67m)
Max Draft: 4' 6" (1.37m)
LOA: 54' 2" (16.51m)
Cabins: 4
Heads: 4

Knots
Knots
Fuel Type: Diesel
Hull Material: PVC

Displacement: 66138 lbs
Fuel Tank: 581 gal (2199.32 liters)
Fresh Water: 238 gal (900.93 liters)
Holding Tank: 90 gal (340.69 liters)
Imported: No

Engines/Generators

Engine 1

Volvo
D6-310
480HP
357.94KW
Fuel: Diesel
Year: 2024
Location: Port

Engine 2

Volvo
D6-310
480HP
357.94KW
Fuel: Diesel
Year: 2024
Location: Starboard



Summary/Description

This is your opportunity to own a brand new 2024 Aquila 54 Yacht without the 1-2 year wait. She has the 4 stateroom / 4 head layout with enclosed flybridge sky lounge. She is equipped with the upgraded Volvo D6 engines and reserve fuel tanks. Designed with the dark walnut interior and loaded.

Lowest Priced 2024 Aquila 54

Brand New Delivery - 0 Hours

Motivated Owner - Priced for Quick Sale

This is your opportunity to own a brand new 2024 Aquila 54 Yacht without the 1-2 year wait. She has the 4 stateroom / 4 head layout with enclosed flybridge sky lounge. She is equipped with the upgraded Volvo D6 engines and reserve fuel tanks. Designed with the dark walnut interior and loaded with virtually every optional equipment and accessories.

The Aquila 54 Yacht Power Catamaran embodies the reliable features and construction methods of the hundreds of Aquila yachts and boats cruising the waters of the world. Owners will delight in panoramic views that fill the master cabin with natural light h large hull side windows, adding to the spacious feeling of the full-beam forward master cabin. Engineered with a completely enclosed and climate-controlled flybridge, the Aquila 54 Yacht Power Catamaran features the versatility to appeal to a global audience of boating enthusiasts.

Key Features

- An exceptional performing and seaworthy hull shape providing first in
- class stability and comfort
- Expansive outdoor living and entertaining spaces along with luxurious
- interior styling and amenities
- Plenty of shade on flybridge via fiberglass hardtop with 316L polished
- stainless steel supports
- Integrated bar area connecting social areas between aft cockpit and
- salon/galley
- Comfortable seating throughout for up to 30 people onboard
- Direct bow access from central steps leading from flybridge to bow area
- FUSION multi-zone audio system with Fusion speakers and Bluetooth
- connectivity
- Premium comforts provided by way of three (3) cabins each with their
- individual walk in toilet with separate shower

Interior



- Full beam master suite including full size closet, master head with walk in shower and fresh water electric flush toilet
- Guest cabins including full size head with walk in shower and fresh water electric flush toilet
- Large salon area with ample comfortable seating
- Large galley area with full size refrigerator/freezer and common household amenities

Hull and Deck Features

- 6 opening deck hatches carefully positioned to enhance ventilation in cabins
- 3 opening port hatches installed in hull side windows of heads
- Custom built PVC rubrail with 316L stainless steel insert offering all around protection
- 2 comfortable and protected bow seats integrated into deck railing
- 10 Mooring cleats in solid 316L polished stainless steel thru bolted
- Deck fill plates in 316L stainless steel: water (2); fuel (2); waste(3)
- Stainless steel bow roller for secondary anchor
- Anchor locker with 1700 watt windlass including handheld remote control with custom chain lock
- Well placed ergonomic handrails in 316L stainless steel ensuring secure movement onboard
- Forward access steps from flybridge to bow
- Ergonomic transom steps for easy boarding and comfortable lounging off stern
- Transom boarding rails in 316L stainless steel; located outboard of aft steps
- High visibility LED navigation lights, running lights and anchoring light
- Engine ventilation intakes with FRP cowling cover
- Integrated manual retractable swim ladder in 316L stainless steel
- Large starboard and port bow lockers with easy lift gas hinges for fender or gear storage; waterproof
- Self draining storage locker in aft cockpit floor
- Aft cockpit, flybridge and side decks all self draining
- Aft cockpit bar area with two (2) stainless steel bar stools
- Engine access lockers with easy lift gas hinge allowing easy access to engine room
- Aft cockpit with expansive hinging window and door opening to galley
- Aft cockpit seating area with dining table which comfortably seats ten (10)
- Forward bow seating for relaxing and socializing
- Integrated aft side boarding step in hull with 316L stainless steel handrail
- Large spacious foredeck for sunbathing
- LED downlighting in aft cockpit
- Variable temperature stern shower located at port aft steps



Flybridge

- Portuguese style flybridge with walk around forward of windscreen
- Exceptional flybridge access from two (2) stairway locations
- Main access from aft cockpit
- Handrails conveniently located all around flybridge for secure movement
- Forward flybridge access via integrated steps
- Forward fixed glass center windscreen with four (4) tempered glass panels
- Windshield wiper with fresh water supply and variable speed control at helm
- Electronic engine double lever throttle and gearshift control
- Variable position stainless steel steering wheel
- Hydraulic steering
- Compass at helm station
- Four (4) marine waterproof 6" 200w speakers located in hardtop
- Spacious and comfortable helm seat for two (2) people with upholstered seat and backrest
- Comfortable forward facing seats port and starboard adjacent of helm station
- Flybridge table with fold down extensions comfortably seating nine (9) people
- Upholstered flybridge cushions and backrests
- Wet bar located aft deck area incorporating Corian work surface, sink with hot and cold faucet
- Large storage area under wet bar with two (2) access doors (optional location for fridge and ice maker)
- Dedicated life raft storage locker at transom area with easy launch
- Lifejacket and safety gear storage under aft cockpit seats
- Fourteen (14) cup holders located in various areas around flybridge

Salon

- Excellent all around visibility from salon seating
- Shatter-proof windows with external overhangs offering excellent visibility and reduced direct sunlight
- Tempered glass hinged window via tempered glass door to cockpit
- offers excellent ventilation and through flow
- Laminate finishes with solid wood trim
- Blinds covering port and starboard side windows
- Overhead LED ceiling lights, LED mood lighting and LED courtesy lighting
- Wall mounted LED lights
- Panel ceilings with decorative solid wood trim and LED accent lighting
- Comfortable open couch seating to starboard
- U-shaped salon lounge settee around salon table with seating up to eight (8) people
- Salon table
- Large shelves behind settees
- Cushions in soft easy clean upholstery



- Hidden slide out mini bar in partition (4 cabin version only)
- Bluetooth stereo head unit with DVD player
- Four (4) ceiling mounted speakers 7.7" 200w

Galley

- Dedicated microwave storage location with outlet
- Large double door fridge/freezer
- Single stainless steel sink with Corian worktop cover and single lever variable temperature faucet
- Central island with storage drawers underneath
- Storage cupboards and drawers offering ample storage for all galley accessories
- Durable stain resistant Corian countertop
- Slide out garbage bin under sink
- Overhead LED ceiling lights as well as mood lighting
- LED courtesy floor lighting
- Synthetic flooring offering maintenance free natural look

Stateroom Areas

- Large windows throughout offering excellent views
- Dedicated hanging lockers
- Custom blinds fitted on cabin hull windows
- Overhead LED ceiling lighting and floor courtesy lighting
- Overhead LED reading lights
- Aft starboard stateroom offering full size bed
- Ample storage lockers and/or drawers under beds
- Synthetic wear resistant flooring offering maintenance free natural wood look
- Large master stateroom mattress (60"W x 80" L / 195 cm x 203 cm)
- Aft guest cabin mattress sizes (61.5"W x 79.8" L / 156 cm x 202 cm)

Heads

- Quiet electric push button control fresh water flush toilets with large bowl
- Opening deck hatch offering ample ventilation
- Blinds over hull window
- Stylish above countertop wash basins with single lever variable temperature faucet
- Corian countertop surrounding wash basin
- Vanity lockers with mirrors
- Synthetic wear resistant flooring offering maintenance free natural wood look
- Automatic shower and sink drain via dedicated sealed sump box



- Overhead LED lighting
- LED nightlight above wash basin

Engine Room

- Engine exhaust to reduce engine emission noise
- Automatic fire suppression heat activated system with alarm monitors
- at helm station
- Engine room insulation (50mm) flame retardant polyurethane foam
- covered with metalized polyester film
- 316L stainless steel engine supports
- Engine room lighting
- Automatic electric bilge pump in each engine room
- Excellent all around engine and systems access for ease of maintenance
- Two (2) hydraulic steering cylinders with Optimus EPS power steering
- pumps
- Electronic engine double lever throttle and gearshift control
- Volvo Electronic Vessel Control (EVC) 4" display at helm station
- Electronic start/stop switches at helm station with E-Key protection

Underwater Gear

- Propeller tunnels for reduced draft and maximum efficiency
- Engine V-drive transmission for compact efficiency
- Four (4) blade bronze propellers
- Propeller shaft - machined stainless steel
- Rudders and tiller arm in 316L stainless steel with FRP tube
- Shut off valves on all salt water intakes in engine rooms
- Sea water strainers
- Watertight self aligning dripless shaft seal with 316 stainless steel
- housing and self aligning teflon bearing
- Extended bronze P-bracket for maximum propeller protection
- Sacrificial keel forward of drive train for added running gear protection

Technical Features

- Bilge pump warning lights
- Instrument panels
- Steering, tilt wheel
- Steering wheel, stainless steel
- C-Zone digital switching system
- Master control panel for 12v and shore power service
- Remote battery master switches at panel
- Five (5) house batteries 200 amp/hour, AGM technology in dedicated
- battery locker
- Two (2) dedicated engine batteries 200 amp/hour, AGM technology



- Shore side electrical system
- AC power supplied by two (2) 50amp 125/250v shore power cables
- Galvanic isolator protector system

Waste System

- Bilge pump warning lights
- Instrument panels
- Steering, tilt wheel
- Steering wheel, stainless steel
- C-Zone digital switching system
- Master control panel for 12v and shore power service
- Remote battery master switches at panel
- Five (5) house batteries 200 amp/hour, AGM technology in dedicated battery locker
- Two (2) dedicated engine batteries 200 amp/hour, AGM technology
- Shore side electrical system
- AC power supplied by two (2) 50amp 125/250v shore power cables
- Galvanic isolator protector system

Disclaimer

The company offers the details of this vessel in good faith but cannot guarantee or warrant the accuracy of this information nor warrant the condition of the vessel. A buyer should instruct his agents, or his surveyors, to investigate such details as the buyer desires validated. This vessel is offered subject to prior sale, price change or withdrawal without notice.



2024 Aquila 54 - Exterior Profile 2024 Aquila 54



2024 Aquila 54 - Aft Deck 2024 Aquila 54



2024 Aquila 54 - Cockpit 2024 Aquila 54



2024 Aquila 54 - Salon 2024 Aquila 54



2024 Aquila 54 - Galley 2024 Aquila 54



2024 Aquila 54 - Master Stateroom 2024 Aquila 54



2024 Aquila 54 - Exterior Profile 2024 Aquila 54



2024 Aquila 54 - Windon 2024 Aquila 54



2024 Aquila 54 - Salon 2024 Aquila 54



2024 Aquila 54 - Stateroom 2024 Aquila 54