



22' (6.71m) 2023 NauticStar 2302 Legacy
Fort Pierce Florida United States



OVERVIEW

Manufacturer:	NauticStar		
Engines:	1 Mercury	Hull Material:	Fiberglass
Engine Model:	150XL	Cruise Speed:	25 Knots
Engine HP:	150	Max Speed:	35 Knots
Beam:	9' 0"	Cabins/Heads:	/
Max Draft:	2' 0"	Fuel Type:	Gas/Petrol
Water:		Fuel:	85 G (321.76 L)

\$41,900



Kyle Kauffmann kylekauffmann@unitedyacht.com

772-370-6314

Data Sheet

Category: Center Consoles
Subcategory: Sport Fishing
Condition: Used
Model Year: 2023
Beam: 9' (2.74m)
Max Draft: 2' (0.61m)
Min Draft: 1' 3" (0.38m)
LOA: 22' 3" (6.78m)

Maximum Speed: 35 Knots
Cruise Speed: 25 Knots
Fuel Type: Gas/Petrol
Deadrise: 19°
Hull Material: Fiberglass
Hull Shape: Monohull
Bridge Clearance: 8' Seating Capacity: 10

lbs
Dry Weight: 2700 lbs
Fuel Tank: 85 gal (321.76 liters)
Imported: No
Builder: NauticStar

Engines/Generators

Engine 1

Mercury
150XL
Outboard 4 Stroke
150HP
111.86KW
Fuel: Gas/Petrol
Hours: 635
Year: 2022
Serial #: 3B235654
Location: Middle

Summary/Description

2023 NauticStar 2302 Legacy - Designed for the serious angler with performance, function, and stable hull for smooth, dry ride! Features ample seating and stowage space for gear and more. Nice dayboat for family fun on the water! CALL NOW!

The NauticStar 2302 Legacy is a remarkable vessel that embodies the perfect blend of style, functionality, and performance. Designed with the avid angler in mind, this boat delivers a superior boating experience that is sure to impress. One of the standout features of the NauticStar 2302 Legacy is its spacious and well-designed layout. With ample seating and storage options, this boat provides plenty of room for all your fishing gear, as well as comfortable seating for family and friends.

The helm area is thoughtfully laid out, with easy access to all the necessary controls and gauges, ensuring a smooth and enjoyable ride. When it comes to performance, the NauticStar 2302 Legacy truly shines. Powered by a reliable outboard engine, this boat glides effortlessly through the water, offering excellent maneuverability and speed. Whether you're cruising along the shoreline or heading out to your favorite fishing spot, you can trust that this vessel will get you there with ease.

The NauticStar 2302 Legacy is also equipped with an array of fishing features that make it a dream for any angler. With a large live well, multiple rod holders, and ample fish storage compartments, you'll have everything you need to reel in the big catch. The boat's stable hull design ensures a smooth and comfortable fishing experience, even in rough waters. In addition to its impressive fishing capabilities, the NauticStar 2302 Legacy also offers a range of amenities that cater to comfort and relaxation. From the plush seating stereo system and Simrad GO 12, this boat is perfect for enjoying a day on the water with family and friends.

Overall, the NauticStar 2302 Legacy is a true testament to quality craftsmanship and attention to detail. With its sleek design, exceptional performance, and abundance of features, this boat is a standout choice for any boating or fishing enthusiast. Whether you're a seasoned angler or a casual boater, the NauticStar 2302 Legacy is sure to exceed your expectations and provide endless enjoyment on the water.

Manufacturer Provided Description

Wherever you go - whatever waters or species you pursue - the 2302 Legacy's rugged hull is up to the challenge. High, flared sides ensure a dry ride for everyone on board. The helm holds a wide station with room for two chartplotters, a deluxe leaning post, and rod management with storage for up to 10 rods. At the transom, three-across seating doubles as live well and cast net storage. A recirculating bait well and raw water shower round up the fishability attributes.

The 2302 Legacy's stable, wide fishing deck is easily converted to a picnic area with an optional bow table. Comfortable bow seating features extendable back rests that fold flush with the gunnel when the fish start to tug the lines.

Mechanical Disclaimer

Engine and generator hours are as of the date of the original listing and are a representation of what the listing broker is told by the owner and/or actual reading of the engine hour meters. The broker cannot guarantee the true hours. It is the responsibility of the purchaser and/or his agent to verify engine hours, warranties implied or otherwise and major overhauls as well as all other representations noted on the listing brochure.

Disclaimer

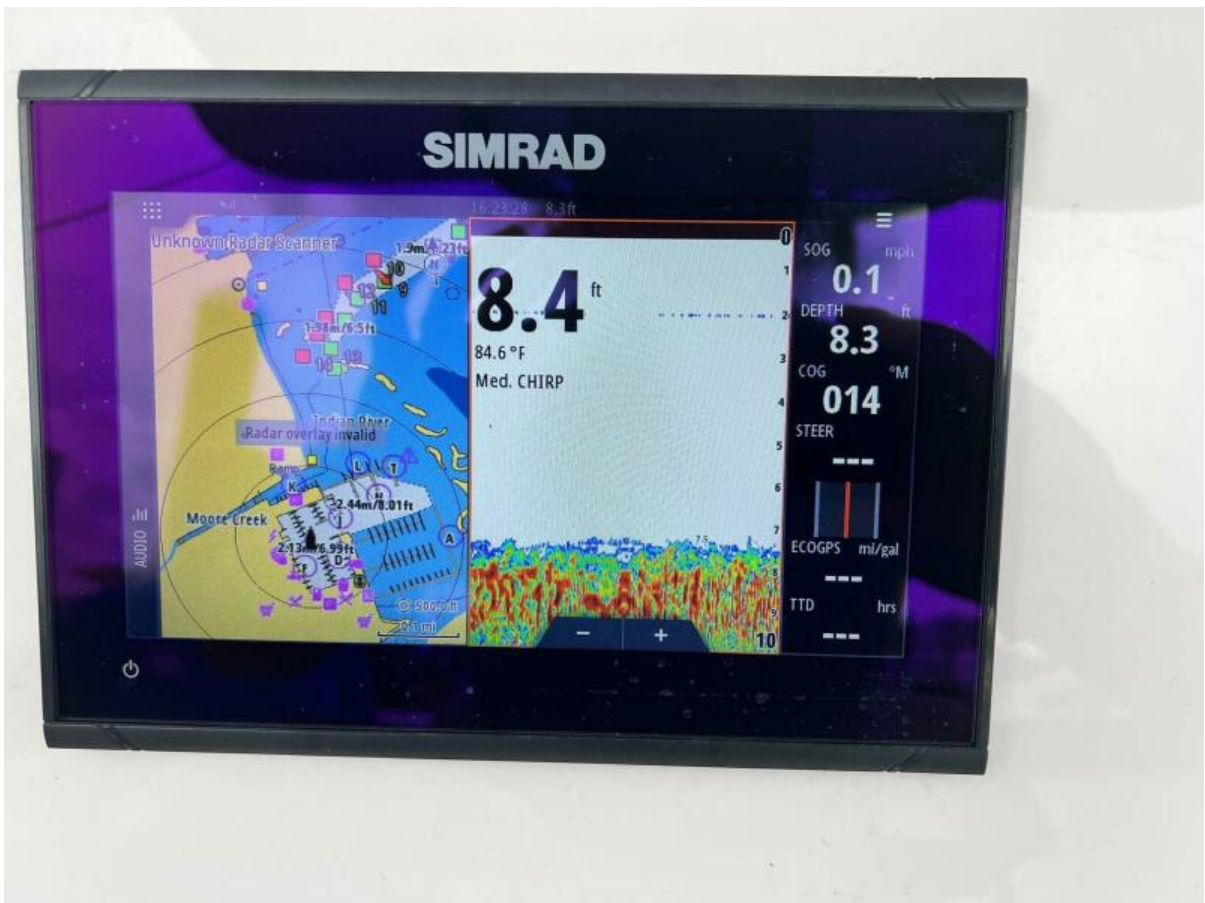
The company offers the details of this vessel in good faith but cannot guarantee or warrant the accuracy of this information nor warrant the condition of the vessel. A buyer should instruct his agents, or his surveyors, to investigate such details as the buyer desires validated. This vessel is offered subject to prior sale, price change or withdrawal without notice.













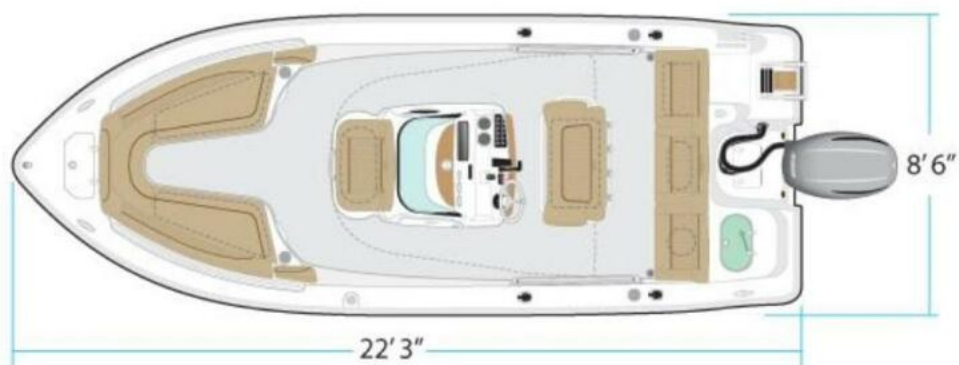












Manufacturer Provided Layout