



Semper Fidelis

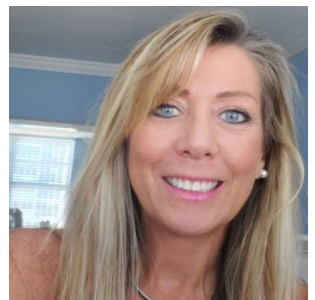
35' (10.67m) 2002 Cabo 35 Express
Miami Florida United States



OVERVIEW

Manufacturer:	Cabo		
Engines:	2 Caterpillar	Hull Material:	Fiberglass
Engine Model:	3126B	Cruise Speed:	24 Knots
Engine HP:	450	Max Speed:	31 Knots
Beam:	13' 0"	Cabins/Heads:	1 / 1
Max Draft:	3' 0"	Fuel Type:	Diesel
Water:	100 G (378.54 L)	Fuel:	400 G (1514.16 L)

\$239,000



Michele Renick michele@unityacht.com

954-444-9230

Data Sheet

Category: Saltwater Fishing
Subcategory: Express Cruiser
Condition: Used
Model Year: 2002
Beam: 13' (3.96m)
Max Draft: 3' (0.91m)
Min Draft: 2' 6" (0.76m)
LOA: 37' 6" (11.43m)
LWL: 34' 6" (10.52m)
Cabins: 1
Sleeps: 4
Heads: 1

Maximum Speed: 31 Knots
Cruise Speed: 24 Knots
Fuel Type: Diesel
Deadrise: 16°
Hull Material: Fiberglass
Hull Shape: Modified Vee
Air Conditioning: Yes

Displacement: 19500 lbs
Bow Thruster: Yes
Fuel Tank: 400 gal (1514.16 liters)
Fresh Water: 100 gal (378.54 liters)
Holding Tank: 11 gal (41.64 liters)
Imported: No
Builder: Cabo Yachts

Engines/Generators

Engine 1

Caterpillar
3126B
Inboard
450HP
335.56KW
Fuel: Diesel
Hours: 1090
Year: 2002
Serial #: 3G501005
Location: Port

Engine 2

Caterpillar
3126B
Inboard
450HP
335.56KW
Fuel: Diesel
Hours: 1090
Year: 2002
Serial #: 3G500271
Location: Starboard

Summary/Description

2002 Cabo Yachts 35 Express

PRICE REDUCED!

The Cabo 35 Express is a top-level sportfishing machine with superior engineering, rugged construction and impeccable attention to detail. This model is highly desirable with her shallow draft and wide beam, giving the boat a softer ride and great head-sea performance. The interior cabin is detailed with beautiful Teak cabinetry complete with a galley, dinette, full head and provides a 6'11" headroom. The boat has a double berth forward with a dinette sofa that converts to 2 single bunks.

The Caterpillar 3126B are reliable engines, with low original hours. Constant maintenance, service and updated equipment makes this Cabo a great collector. This owner has been faithful to this boat and she ready for her next chapter.

Vessel Walkthrough

Cabin:

The 35' Cabo Express salon is very open with 6'1" of headroom. A large double berth if forward as well as a convertible L-Shaped settee, which allows sleeping for up to 4 guests in the cabin. The port side galley includes a Corian countertop, refrigerator and freezer, microwave oven, 2-Burner Cook Top and plenty of cabinet storage. The private head also contains a stall shower set-up.

- Dinette to starboard lower berth converts to bed with custom storage under upper bunk

Main Cabin:

- L-Shaped settee ultra-leather sofa (with Pullman above converts to 2 berths)
- Teak interior cabinetry
- Dinette to starboard lower berth converts to bed with custom storage under upper bunk
- Teak dinette table
- CruisAir control
- Electrical panel
- Galley portside with Corian countertop and sink
- Icerette ice maker
- Norcold refrigerator and freezer
- Kenyon, 2-Burner stove top
- Panasonic microwave
- Seaward 11-Gallon hot water heater
- Teak cabinets
- 110v Outlet
- Stateroom forward with double berth
- 24" LED Flat Screen TV
- Storage compartment at foot of bed
- Teak drawers under bed with cabinets overhead
- Teak and Holly sole

- Bomar hatch
- Recessed lighting
- Panasonic XM/ stereo system
- Head with VacuFlush system
- Tank watch waste management
- Shower with Grohe faucets
- A/C vent
- Corian sink
- Teak vanity with mirrored medicine cabinet
- Port hole hatch
- 12v Lighting
- Rod storage
- AC/DC breaker panel

Helm and Deck:

The helm deck is 3 steps up from the cockpit which has a bench seat at the helm, a table for 3 on deck, a hatch for engine access and a door to the cabin. There is excellent visibility at the helm fore and aft, and its equipped with an very efficient BTU air condition system to keep you cool all day.

- Molded fiberglass helm console
- Engine room hydraulic lift hatch
- Helm seat with adjustable bench and footrest
- Molded L-Shaped lounge seating portside
- Dometic 16,000 BTU AC unit with reverse heat cycle on deck (new 2016)
- Custom Rod storage compartment above in hardtop
- Heat protective Canvas window covers
- Custom plastic door curtain to contain AC on helm
- Full Isinglass protection at helm
- Custom Tackle storage compartment on deck
- Windlass
- Bruce 11kg and Fortress anchor
- Switlick, 6-Person life raft

Electronics:

- Furuno Navnet - 120 mile digital radar
- Garmin GSD 26 Chirp digital sonar sounder
- Garmin 7212 touchscreen chart plotter with camera playback
- Garmin 6208 GPS Chart plotter
- Garmin GMI 10 multi-sensor connects depth/windspeed, GPS, engines
- Garmin 200 VHF radio
- Flo Scan Fuel computers
- Flush mounted Ritchie compass with light
- FLIR thermal imaging camera (high definition/low light)
- Trim Tab switches
- Bow Thruster control
- ACR searchlight and handheld
- Dual trumpet horn
- E.P.I.R.B. 406 mhz
- Custom stainless switch panel

- Custom engine instrument panel with audible warning system
- Lewmar Windlass control
- (3) Underwater lights
- Fusion marine stereo
- Fire and bilge high water alarm
- ECM on both upper and lower station
- NMEA 2000
- Dock side ethernet hookup for TV
- NMEA 2000 ethernet

Upper Helm Station:

- Garmin Plotter
- Garmin multi-sensor connects depth/windspeed, GPS, engines
- Glendinning electronic controls
- Garmin chartplotter
- VHF radio

Cockpit:

- Aluminum reinforcing plate for fighting chair mount
- 40-Gallon bait tank molded in transom
- Bait prep center port which includes a sink, rigging board and tackle storage, fitted with lid and has a gas spring actuator
- Courtesy lighting under gunwales and helm deck overhang
- Cockpit gunwale has high-density foam, white vinyl coaming
- Large in-deck insulated fish boxes with freezer plates and macerator pump out system
- Lazzerette and fish boxes are equipped with heavy duty seals, drains, gutters, and full length stainless piano hinges
- Refrigerated Ice box is located on the starboard side
- Rod-racks port and starboard
- (5) Rod holders
- Self-bailing cockpit scuppers
- Transom door with top gate with heavy-duty polished stainless hardware
- Fresh and salt water wash down
- (2) 12v Deep drop outlets
- Under deck fuel tank in lazarette

Mechanical and Electrical:

Mechanical and operational systems have been maintained by meticulous Captain. Caterpillar just replaced all filters, flushed both engines, engines tight with no oil or water leaks.

- Twin Caterpillar 3126B (8 cylinders) 450 hp engines
- Phasor Generator 7.5kw new in 2018 (912 hours)
- Dometic 12,000 BTU AC unit with reverse heat cycle (new 2016)
- Glendenning electric controls (new in 2018)
- Vetus bow thruster
- Bilges white gelcoat
- (3) Automatic/manual Bilge pumps
- Bonding system with transom zinc plate

- Bronze high speed water intake scoops with integral sea water strainers
- Stainless steel hose clamps on all hose fittings double stainless clamps on engine exhaust hoses
- Emergency bilge valve on one main engine
- Engine alarm system
- (2) Engine hour meters
- Engine room intake fans
- Fiberglass fuel tank made with fire-retardant vinylester resin
- Fire extinguishers and halon system (Inspected August 2023)
- Fresh water-cooling system for main engines
- Dual R12 Racor Fuel filters with water separators on both main engines and generator
- (3) High water bilge alarms
- Sea Land head
- 11-Gallon Holding tank with macerator and dockside discharge
- Heavy duty Hydraulic helm deck lift system
- Hydraulic steering system (Teleflex-Seastar)
- Engine SuperFlush system (helps extend protect parts and extend the service life)
- Flo Scan (fuel monitoring system)
- Metal braided fire-retardant fuel lines
- Mufflers are fiberglass with backwash surge tub
- 3-Blade Nibral propellers
- Stainless steel Propeller shafts (double taper)
- Bronze Rudders
- Bronze Sea cocks on all through hull fittings
- Dripless stuffing boxes 11-Gallon Water heater (120v)
- X-Oil change system for both mains and generator
- Trolling valves
- Battery Charger - Mastervolt 12-75
- Batteries (2) main engine, (1) house
- CO and Smoke alarms
- Vessel camera system
- AC/DC electrical panel in salon cabin

Hull and Deck:

Cabo Yachts are made with molded fiberglass construction using premium vinylester resins and bi-axial stitched fabric reinforcement with solid fiberglass bottom and core construction. The fit and finish are superb and have a quality molded-in gelcoat finish.

BOTTOM PAINTED AND PROP SPEED APPLIED 2023.

- Stainless steel rub strip on face of white high density PVC rub rail
- 6" Stainless steel bow chocks
- 12" Stainless bow cleats
- 12" Stainless stern cleats
- 12" Stainless spring line cleats
- Molded fiberglass bow pulpit
- Custom deck rails
- Non-Skid deck surfaces
- Recessed stainless steel Fortress anchor on roller assembly (spare 11kg Bruce type)
- Approx. 10' steel chain and 150' nylon rode
- Stainless stern hawse pipes

- Windshield wipers (3) on separate controls, and heavy-duty welded aluminum windshield with side vents with an Electronic control for center window at helm
- Heavy duty 12V electric Lewmar Windlass with remote from bridge and deck switches
- Rupp (2) Outriggers
- Trim tabs
- (3) Underwater lights (new 2023)

Broker's Comments

This original owner purchased her new from HMY in 2002. He has maintained this Cabo in excellent operating condition, with very low hours. Recent insurance survey reported the boats overall condition is EXCELLENT. Captain maintained and constant mechanical and electronic updates performed annually. She is ready for her next owner!

If you are in the market for a solid and safe family fishing vessel boat, there is nothing like this 35' Cabo Express. Reliable, sea worthy, comfortable, quick performance and great resale.

Exclusions

- Owner's Fishing Tackle and Personal Belongings

Mechanical Disclaimer

Engine and generator hours are as of the date of the original listing and are a representation of what the listing broker is told by the owner and/or actual reading of the engine hour meters. The broker cannot guarantee the true hours. It is the responsibility of the purchaser and/or his agent to verify engine hours, warranties implied or otherwise and major overhauls as well as all other representations noted on the listing brochure.

Disclaimer

The company offers the details of this vessel in good faith but cannot guarantee or warrant the accuracy of this information nor warrant the condition of the vessel. A buyer should instruct his agents, or his surveyors, to investigate such details as the buyer desires validated. This vessel is offered subject to prior sale, price change or withdrawal without notice.















