



AVAILABLE TO ORDER

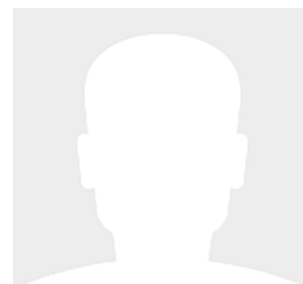
36' (10.97m) 2024 Beneteau Antares 11
League City Texas United States



OVERVIEW

Manufacturer:	Beneteau		
Engines:		Hull Material:	Fiberglass
Engine Model:		Cruise Speed:	Knots
Engine HP:		Max Speed:	Knots
Beam:		Cabins/Heads:	/
Max Draft:	"	Fuel Type:	Gas/Petrol
Water:		Fuel:	

Call for Price



Data Sheet

Category: Sports Cruiser
Condition: New
Model Year: 2024
LOA: 36' 7" (11.15m)

Knots
Knots
Fuel Type: Gas/Petrol
Hull Material: Fiberglass

Imported: No

Engines/Generators

Summary/Description

With an overall length of just over 36 feet, the flagship of the Antares fleet is the perfect definition of a weekend cruiser.

Safe, ideal for cruising, and seaworthy, the design of the **Antares 11** focuses on comfort and space, as well as safety and innovation. The result of a collaboration between BENETEAU and Sarrazin Design, the Antares 11 is setting the standard for what a pocket cruiser can be. Ample natural light, tons of seating, fold down swim platform and a forward sunpad are just a few of the features of the boat.

INTERIOR

Natural light and cruising comfort characterize this large weekender. The double master cabin with en-suite shower room is well above the usual standards. The full beam aft cabin has room for three. In the salon, the Antares 11 can easily entertain up to 7, while you enjoy the stunning views through ample windows.

EXTERIOR

The Antares 11 is designed to help you do it all. Pushed by twin Mercury 300s, you will have the power and comfort to go almost anywhere.

Her many innovative solutions ensure a high level of comfort: aft sun bench, side swim platform creating a sea-view terrace, and aft cockpit which flow naturally into the wheelhouse.

High freeboards and large walkways allow for easy access to all corners of the spacious Antares 11.

Twin Mercury 300 V-8s pair perfectly with the hull offering a smooth, dry and efficient ride. When combined with optional joystick piloting, the Antares 11 is nimble even in the tightest of marinas.

