



In Stock Now SAVE OVER \$48K+

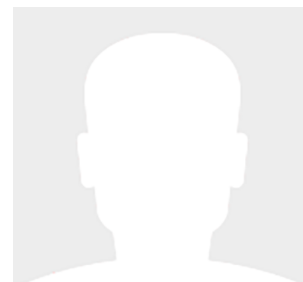


36' (10.97m) 2024 Beneteau Antares 11 Fly #391
League City Texas United States

OVERVIEW

\$499,000

Manufacturer:	Beneteau	Hull Material:	Fiberglass
Engines:		Cruise Speed:	
Engine Model:		Max Speed:	
Engine HP:		Cabins/Heads:	/
Beam:	11' 2"	Fuel Type:	Gas/Petrol
Max Draft:	"	Fuel:	212 G (802.51 L)
Water:	53 G (200.63 L)		



Data Sheet

Category: Flybridge
Condition: New
Model Year: 2024
Beam: 11'2" (3.40m)
LOA: 36' 7" (11.15m)

Fuel Type: Gas/Petrol
Hull Material: Fiberglass

Dry Weight: 13550 lbs
Fuel Tank: 212 gal (802.51 liters)
Fresh Water: 53 gal (200.63 liters)
In Stock: Yes

Engines/Generators

Summary/Description

With an overall length of just over 36 feet, the flagship of the Antares fleet is the perfect definition of a weekend cruiser. Safe, ideal for cruising, and seaworthy, the design of the Antares 11 focuses on comfort and space, as well as safety and innovation.

The flybridge of the Antares 11 FLY blends seamlessly into the powerboat's profile and adds a comfortable **new perspective** on your travels.

The result of a collaboration between BENETEAU and Sarrazin Design, the Antares 11 is setting the standard for what a pocket cruiser can be. Ample natural light, tons of seating, fold down swim platform and a forward sunpad are just a few of the features of the boat.

Natural light and cruising comfort characterize this large weekender. The double master cabin with en-suite shower room is well above the usual standards. The full beam aft cabin has room for three. In the salon, the Antares 11 can easily entertain up to 7, while you enjoy the stunning views through ample windows.

The flybridge is fitted with a starboard helm station with optional electronics. Two benches on the port side, along with an aft sunpad, create open air salon. An optional refrigerator can be added making the flybridge a very popular destination itself.

Her many innovative solutions ensure a high level of comfort: aft sun bench, side swim platform creating a sea-view terrace, and aft cockpit which flow naturally into the wheelhouse.

High freeboards and large walkways allow for easy access to all corners of the spacious Antares 11.

Twin Mercury 300 V-8s pair perfectly with the hull offering a smooth, dry and efficient ride. When combined with optional joystick piloting, the Antares 11 is nimble even in the tightest of marinas.

Interior Design

Natural light and cruising comfort characterize this large weekender. The double master cabin with en-suite shower room is well above the usual standards. The full beam aft cabin has room for three. In the salon, the Antares 11 can easily entertain up to 7, while you enjoy the stunning views through ample windows.

Exterior Design

The result of a collaboration between BENETEAU and Sarrazin Design, the Antares 11 is setting the standard for what a pocket cruiser can be. Ample natural light, tons of seating, fold down swim platform and a forward sunpad are just a few of the features of this boat.

Disclaimer

The Listing Brokerage Company offers the details of this vessel in good faith but cannot guarantee or warrant the accuracy of this information nor warrant the condition of the vessel regardless of information provided. A buyer should instruct his agents, or his surveyors, to investigate such details as the buyer desires validated. This vessel is offered subject to prior sale, price change, or withdrawal without notice. PLEASE NOTE: All electronics are listed for verification purposes but not warranted in the selling price of the boat.

Engine hours are as of the date of the original listing and are a representation of what the listing broker is told by the owner and/or actual reading of the engine hour meters. The broker cannot guarantee the true hours. It is the responsibility of the purchaser and/or his agent to verify engine hours, any warranties expressed or implied and/or any engine service as well as all other representations noted on the listing brochure.

All the yacht brokerage agents at the listing company are Independent Contractors. A buyer should instruct his agents, or his surveyors, to investigate such details as the buyer desires validated. This vessel is offered subject to prior sale, price change or withdrawal without notice.

