



2018 30 Sea Hunt

30' (9.14m) 2018 Sea Hunt 30 Gamefish
North Palm Beach Florida United States



OVERVIEW

Manufacturer:	Sea Hunt	Hull Material:	Fiberglass
Engines:	2 Yamaha	Cruise Speed:	
Engine Model:		Max Speed:	
Engine HP:	300	Cabins/Heads:	/
Beam:	9' 9"	Fuel Type:	Gas/Petrol
Max Draft:	1' 10"	Fuel:	225 G (851.72 L)
Water:	19 G (71.92 L)		

\$169,000



Nicholas Olinde nolinde@hmy.com

321-720-7115



Data Sheet

Category: Center Consoles
Condition: Used
Model Year: 2018
Beam: 9'9" (2.97m)
Max Draft: 1' 10" (0.56m)
LOA: 30' (9.14m)

Fuel Type: Gas/Petrol
Hull Material: Fiberglass

Dry Weight: 6000 lbs
Fuel Tank: 225 gal (851.72 liters)
Fresh Water: 19 gal (71.92 liters)
Holding Tank: 15 gal (56.78 liters)
In Stock: Yes

Engines/Generators

Engine 1

Yamaha
300HP
223.71KW
Fuel: Gas/Petrol
Hours: 400

Engine 2

Yamaha
300HP
223.71KW
Fuel: Gas/Petrol
Hours: 400



Summary/Description

This Sea Hunt Gamefish 30 is powered by twin Yamaha F300 outboard engines, guaranteeing you reliable fun on the water. With a roomy 30' layout, the 30 Gamefish is perfect for fishing enthusiasts, packed with useful features like dual livewells, 18 rod holders, and a massive fish box.

This Sea Hunt Gamefish 30 is powered by twin Yamaha F300 outboard engines, guaranteeing you reliable fun on the water. With a roomy 30' layout, the 30 Gamefish is perfect for fishing enthusiasts, packed with useful features like dual livewells, 18 rod holders, and a massive fish box. Plus, it has all the family comforts and luxuries you could want. This Sea Hunt Gamefish 30 is built tough and is in awesome shape with low engine hours. Don't miss the opportunity to have own this 2018 Sea Hunt 30 Gamefish.

2018 30 Sea Hunt

Mechanical Equipment

- Yamaha helm master electric power assist steering with joystick
- Lenco Marine electric trim tabs

Electronics

- (2) Simrad NSS12 evo3 helm MFD's
- Airmar SS164 transducer
- Simrad Halo24 pulse compression radar
- Yamaha helm master autopilot
- Simrad RS20S VHF
- JL Audio Mediamaster 50 head unit
- (6) JL Audio 6.6 speakers

Fishing

- 27 gallon transom livewell
- 40 gallon leaning post livewell
- 250 quart transom fishbone
- (4) Stainless bow rod holders
- (4) Stainless cockpit rod holders
- (4) Stainless leaning post rode holders
- (6) Powder coated T-top rod holders
- Tackle storage in the leaning post and midship under gunnel on both sides
- Under cockpit starboard gunnel rod/gaff storage

Comfort Features

- Teak patterned SeaDek on deck
- (2) cupholders in bow, (2) in forward seating (2) at helm, (2) in leaning post, (22) in cockpit gunnel
- (3) Misters in the T-top
- U-shaped forward seating with filler to make sun pad
- Fold down and removable transom seating



Deck Equipment / Ground Tackle

- Lewmar anchor windlass
- Lewmar DTX 10kg/22lb anchor
- Galvanized chain and double braided nylon anchor rode
- (2) Stainless pop-up bow cleats
- (2) Stainless pop-up midship cleats
- (2) Stainless pop-up stern cleats

Lighting

- (5) overhead LED helm lights
- (1) EMCO LED forward spreader light
- (2) EMCO LED aft spreader lights
- (2) OceanLED X4 underwater lights
- Rigid Industries 30" curved LED light bar
- (8) LED deck courtesy lights
- (1) LED live well light

Pumps

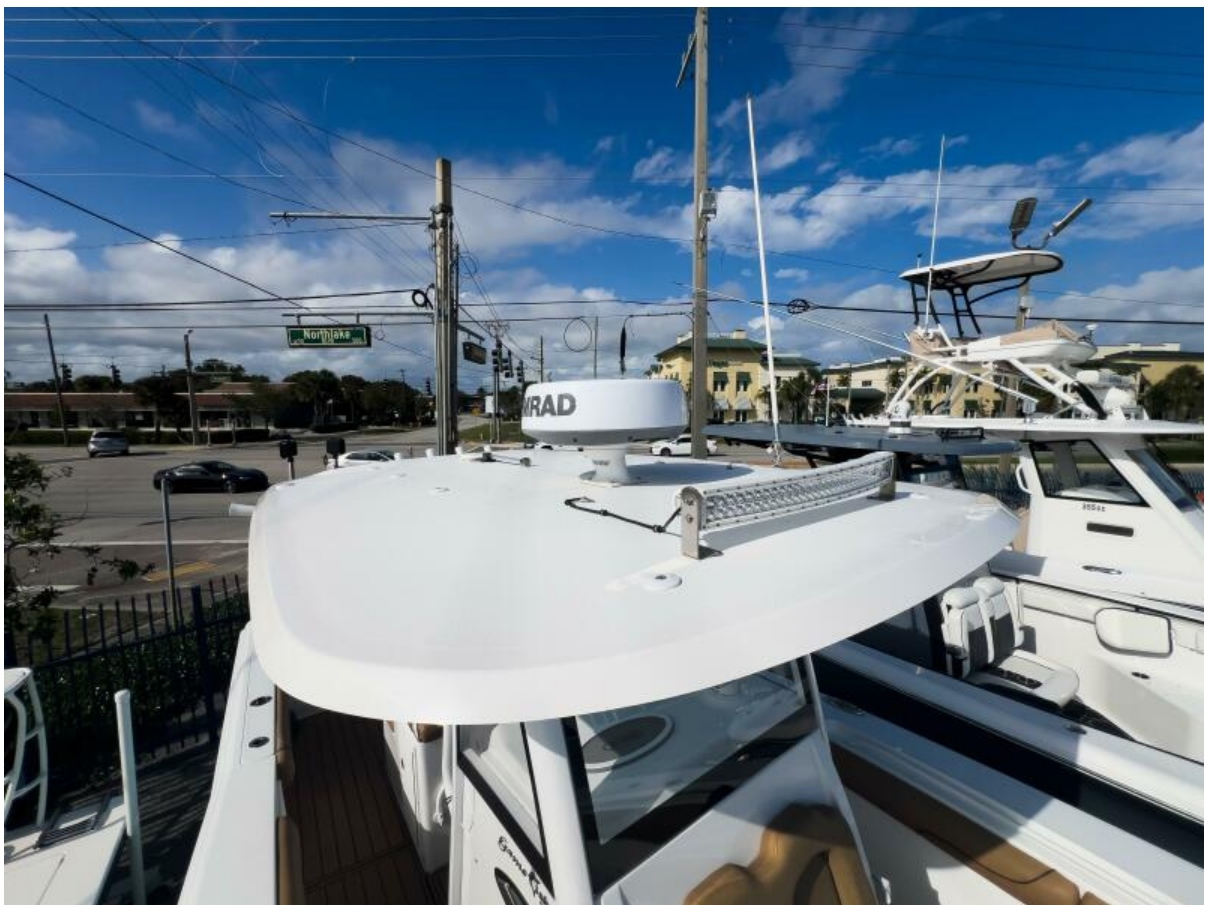
- Transom livewell: Shurflo Piranha 800
- Leaning post livewell: Shurflo Piranha 800
- Misters: Mister-Comfort 8083
- Bilge pumps: (1) Rule-Mate 2000, (1) Rule-Mate 1100
- Raw Water: Shurflo blaster II
- Fresh Water: Shurflo blaster II
- Head: Shurflo 3200-000

Miscellaneous

- Port side of cockpit dive door
- Electronically actuated helm vent
- Freshwater wash down on starboard side transom
- Raw water wash down under gunnel on starboard side
- Head in console
- Stainless dive door boarding ladder that stores in console
- Garelick pullout boarding ladder in transom



2018 30 Sea Hunt



Hardtop



Seating



Seating



Seating



Seating



Seating



Seating



Helm



Helm



Forward Seating



Forward Seatinig



Head



Electronics