



No Name

40' (12.19m) 2008 Rinker 40 Express Cruiser
Huntington Beach California United States



OVERVIEW

Manufacturer:	<i>Rinker</i>		
Engines:	2 Mercruiser	Hull Material:	Fiberglass
Engine Model:	8.1L	Cruise Speed:	22
Engine HP:	425	Max Speed:	
Beam:	13' 0"	Cabins/Heads:	2 / 1
Max Draft:	3' 2"	Fuel Type:	Gas/Petrol
Water:	69 G (261.19 L)	Fuel:	300 G (1135.62 L)

\$250,000



Data Sheet

Category: Express Cruiser
Subcategory: Express Cruiser
Condition: Used
Model Year: 2008
Beam: 13' (3.96m)
Max Draft: 3' 2" (0.97m)
Min Draft: 2' (0.61m)
LOA: 40' (12.19m)
Cabins: 2
Heads: 1

Cruise Speed: 22 Fuel Type: Gas/Petrol
Hull Material: Fiberglass

Dry Weight: 19680 lbs
Fuel Tank: 300 gal (1135.62 liters)
Fresh Water: 69 gal (261.19 liters)
Holding Tank: 45 gal (170.34 liters)
HIN/IMO: RNK91142B808
Stock #: C-BRA6123-GS

Engines/Generators

Engine 1

MerCruiser
8.1L
Inboard
425HP
316.92KW
Fuel: Gas/Petrol
Hours: 465
Hours Date: 07-21-2023
Year: 2008
Serial #: 1A300889
Location: Port

Engine 2

MerCruiser
8.1L
Inboard
425HP
316.92KW
Fuel: Gas/Petrol
Hours: 465
Hours Date: 07-21-2023
Year: 2008
Serial #: 1A302774
Location: Starboard

Generator 1

Kohler
7.50KW

Summary/Description

For Sale

This 2008 Rinker 400 Express Cruiser (called the 390 Express Cruiser when she was introduced in 2006), a value- priced sterndrive cruiser loaded with standard features. Like all Rinker boats, she rides on a modified-V hull with moderate beam and a solid fiberglass bottom. The 390/400's tall freeboard results in an exceptionally spacious interior with nearly seven feet of cabin headroom. If you are looking for a large cruiser, you need to take a look at this vessel - it is loaded right from the factory with all the extras that make cruising fun. Twin Merc 425, HARD TOP, air cond, generator, power windlass, lots of electronics - a HUGE AFT CABIN ! This layout is an excellent use of space that competes with any other cruiser in its size range or even a few feet larger. Call to schedule a showing today!

Accommodations

The master stateroom is forward in this layout and includes a queen island berth and flat-screen TV. But it's the huge aft stateroom that comes as a surprise, a feat made possible by Rinker's decision to use space-saving sterndrive power in this boat rather than more conventional inboard (V-drive) power. Both staterooms come with privacy doors rather than curtains—a real plus. Satin-finished cherry joinery is applied throughout the interior that also features a Corian galley counter and teak flooring. The split-level cockpit, with seating for a small crowd, includes a full-service wet bar with icemaker, double helm seat with flip-up bolster, walk-through windshield.

- Forward Stateroom w/Privacy-Door
- Full-Size Berth
- Mirrored Forward Bulkhead
- Storage Console to Port
- LCD-Television to Starboard
- Settee to Starboard w/Dining / Cocktail-Table (Converts to Full-Size Berth)
- Overhead Storage Cabinets
- Power Distribution Panel Forward of Settee
- Salon LCD-Television
- Port Aft / Mid-Stateroom w/Privacy-Door - Twin Berth's
- Vanity w/Sink/Storage Cabinets
- Overhead Storage Cabinets
- LCD-Television
- Head (Vacuflush) w/Vanity/Sink/Stall-Shower
- Teak-Holly Composite Flooring
- Central Vacuum System
- Air-Conditioning & Heat (2-Units)

Galley

- Polished Stainless Steel Sink
- Pressure Water System
- Hot Water Heater
- Stove (2-Burner Electric)
- Microwave Oven

- Refrigerator w/Freezer
- Corain-Style Counter-Top's

Electronics

- Compass
- VHF Marine Radio w/External-Speaker
- Digital Depth Sounder
- Raymarine E120 (Color) Radar w/GPS/Chartplotter
- Mercury Vessel-View
- Fusion Premium Sound System w/Helm-Mounted Control (Note JL-Audio Speakers / Sub-Woofer)
- Axis Joy-Stick Piloting w/DTS-Controls, Sky-Hook, Auto-Steer / Auto-Heading

Electrical

- (4) Batteries
- (3) Battery Switches
- Battery Charger
- Kohler 7.5kw Generator w/Sound-Enclosure
- (2) 30-AMP Shorepower Connections w/Cord
- 12V Accessory Plug-In
- Dockside Cable-TV Connection

Deck

- Windlass Anchor
- (3) Forward Deck Hatches w/Screens
- Forward Bow Sun-Pad's
- Walk-Through Windshield
- Cockpit Wet Bar w/Sink/Ice-Maker/Refrigerator/Drop-Down LCD-Television
- Infinity Snap-in Snap-out Cockpit Carpeting
- Transom Storage Locker
- Transom Seat
- Transom Shower
- Power Engine Hatch Lift
- Forward Deck Fender Holders
- Seadek decking on the helm and swim step
- Full cover, bow to stern

Additional

- Trim Tabs
- Halon Fire System
- (2) Windshield Wipers
- Horn
- Canvas Top
- Underwater Lights
- Remote Control Spotlight

Mechanical Disclaimer

Engine and generator hours are as of the date of the original listing and are a representation of what the listing broker is told by the owner and/or actual reading of the engine hour meters. The broker cannot guarantee the true hours. It is the responsibility of the purchaser and/or his agent to verify engine hours, warranties implied or otherwise and major overhauls as well as all other representations noted on the listing brochure.

Disclaimer

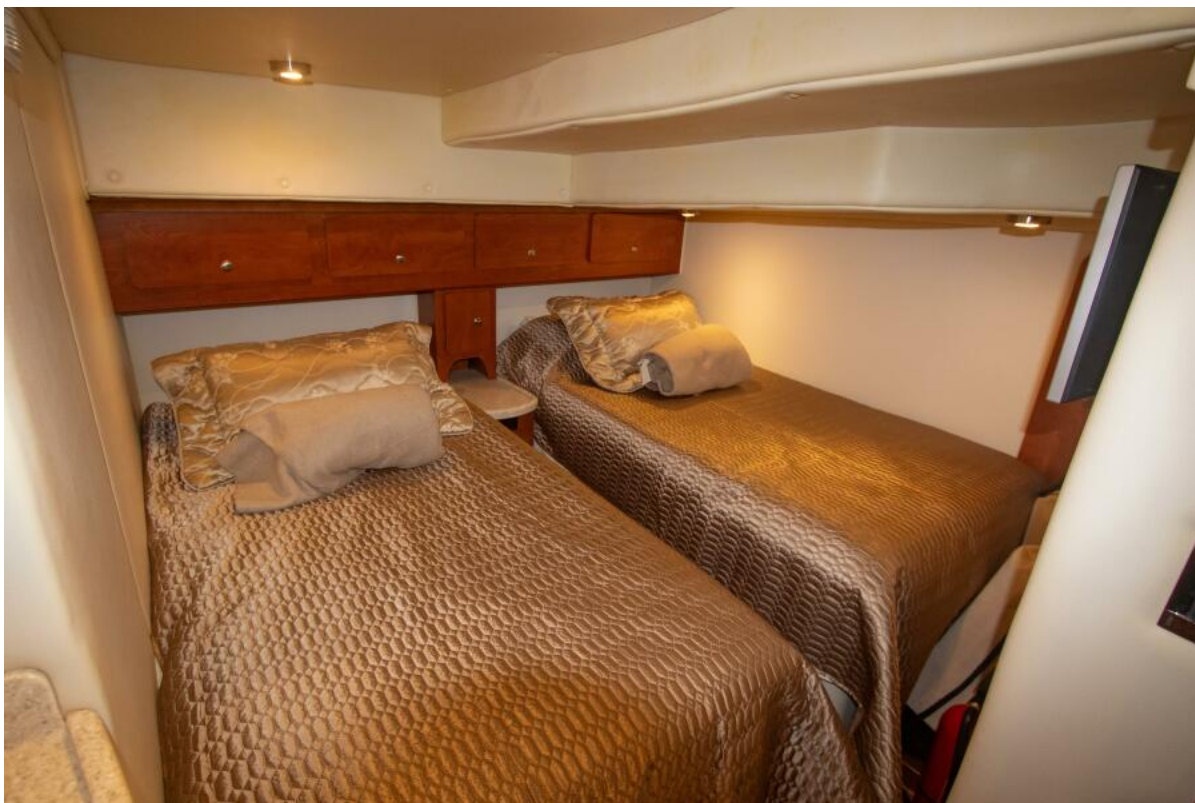
The company offers the details of this vessel in good faith but cannot guarantee or warrant the accuracy of this information nor warrant the condition of the vessel. A buyer should instruct his agents, or his surveyors, to investigate such details as the buyer desires validated. This vessel is offered subject to prior sale, price change or withdrawal without notice.



2008 Rinker 40 Express Cruiser Profile



2008 Rinker 40 Express Cruiser



2008 Rinker 40 Express Cruiser



2008 Rinker 40 Express Cruiser



2008 Rinker 40 Express Cruiser



2008 Rinker 40 Express Cruiser