



Southern Run

30' (9.14m) 2018 Chris-Craft 30 Catalina
St Petersburg Florida United States



OVERVIEW

\$249,900

Manufacturer:	Chris-Craft		
Engines:	2 Yamaha	Hull Material:	Fiberglass
Engine Model:	F300	Cruise Speed:	
Engine HP:	300	Max Speed:	
Beam:	10' 2"	Cabins/Heads:	1 / 1
Max Draft:	1' 9"	Fuel Type:	Gas/Petrol
Water:	32 G (121.13 L)	Fuel:	198 G (749.51 L)



Joe Vinson jvinson@galatiyachts.com

904-222-4166

Data Sheet

Category: Center Consoles
Subcategory: Saltwater Fishing
Condition: Used
Model Year: 2018
Beam: 10'2" (3.10m)
Max Draft: 1' 9" (0.53m)
LOA: 30' (9.14m)
Cabins: 1
Heads: 1

Fuel Type: Gas/Petrol
Hull Material: Fiberglass

Displacement: 8700 Fuel Tank: 198 gal
(749.51 liters)
Fresh Water: 32 gal (121.13 liters)
Holding Tank: 30 gal (113.56 liters)
HIN/IMO: CCBCL126B818
Stock #: BR5972-JV

Engines/Generators

Engine 1

Yamaha
F300
Outboard
300HP
223.71KW
Fuel: Gas/Petrol
Hours: 248
Year: 2018
Serial #: 1049899
Location: Port

Engine 2

Yamaha
F300
Outboard
300HP
223.71KW
Fuel: Gas/Petrol
Hours: 248
Year: 2018
Serial #: 1014106
Location: Starboard

Summary/Description

For sale

2018 30 Chris-Craft Catalina - "Southern Run" for sale. Break out the Champagne Hull and Matching Painted Engines. "Southern Run" is a very clean low hour 2018 Chris-Craft 30 Catalina that is perfectly matched with Twin Yamaha F300 Four Stroke Engines (w/Transferrable Engine Warranty to March 2025). The 30' Catalina has it all with its classic stylish lines, plush seating for your whole crew, and a finished "Yacht Grade" Cabin.

Chris Craft builds an "Ultra-Premium" center console with a significantly higher level of build quality, fit, and finish compared to the majority of the other production center consoles available.

However, don't be dismayed by all the luxury and comfort. The 30' Catalina is still an offshore machine that can handle rough seas with her 21-degree deadrise. She also has the required fishing features such as rocket launchers, rod holders, macerated fish boxes, and tackle storage to bring home the big ones. "Southern Run" is a true offshore fishing "Yacht"

Call today for a full showing!

Manufacturer Provided Description

The 30' Chris Craft Catalina is the essence of quality and comfort. The Pilothouse design protects passengers from the elements while providing unobstructed views in every direction, and easy movement around the entire deck. Invite 12 aboard...there's room - and a view - for everyone.

Each Chris Craft is created by highly experienced designers at their factory in Sarasota, Florida, where they maintain tight control over every detail that defines their particular, very demanding set of standards. They specify only the highest quality materials, like hand-selected teak - to differentiate a Chris-Craft from every other boat on the market.

It'd be difficult to point out a more luxurious and comfortable center console boat in this size range.

Interior

The 30 Catalina cabin is not the utilitarian cuddy found aboard a lot of boats in this size range. It has a ceramic sink/shower and modern faucet, a berth (with electric toilet underneath) and a hanging locker. Wood doors and trim add a sense of elegance. All of this combined with Air Conditioning make her a great overnight or weekend capable cruiser.

Helm

This Catalina 30 has the unique "Pilothouse" Hard T-Top option. The hardtop matches both the soft curves of the Catalina's hull and the interior design of the bow area.

The beefy, black-framed windshield is also aesthetically dynamic and provides a climate-controlled pocket for all types of weather. The summer Florida sun can make summertime hot, but air-conditioning vents keep the helm area as cool as inside. The helm space looks smart too, with matching helm and companion seats that are *bucket-style chairs with flip-up bolsters* with hand-stitched in diamond patterns with the Chris-Craft logo, as well as the large 16-inch Garmin touchscreen display, and a gloss finished wood wheel.

Foredeck and Bow Lounge Area

The area forward of the helm area opens up into a vast lounge area with a full chaise lounge forward of the console complete with arm rests and cup holders. The lounge area has the same hand-stitched in diamond patterns with the Chris-Craft logos. The bow area is fully cushioned with the wrap around bolsters.

Cockpit

The area aft of the helm is designed for groups, with fold-down seats and cushioned bolsters, the cockpit is also built for fishing, with an optional live well under the helm seat and rocket launchers integrated into the transom. The starboard-side door should make bringing the big ones into the cockpit that much easier. The 18-inch-wide side entry door also turns the boat into a diving platform with easy exit and entry. The door also makes it easier to hop on board from a dock. There is also an opening doorway to the transom area that opens to a beautiful teak walkway in front of the engine well making it very easy to move around.

Standard Equipment

- 5 Year Transferable Hull Structural Warranty (Through March 2025)
- Accessory Outlet, 12v (2)
- Accessory USB / Auxiliary Inputs
- Battery access panel
- Battery Switch Panel
- Breaker Panel w/ Push Button Reset
- Beverage Holders - Stainless Steel
- Bilge Pumps w/ Auto Float Switch
- Bow Accent Teak
- Bow and Stern Eyes, Stainless Steel
- Bow Light Cover, Stainless Steel
- Chase Lounge Seating in front of Console
- Chris-Craft Custom Embroidered Pennant with Stainless Steel Pole
- Chris-Craft Custom U.S. Flag Kit with Stainless Steel Pole and Base
- Chrome Plated Stainless Steel Fasteners
- Cockpit Bolsters, Padded
- Cockpit Drains, Stainless Steel
- Cockpit LED Lights
- Cockpit Liner, One Piece Structural Fiberglass Foam Filled
- Deck Fill Plates, Stainless Steel
- Dry Storage Under Bow Seating
- Fish Boxes, Port & Stbd w/ Macerator System
- Fresh Water Deck Fitting
- Fresh Water System - 31 Gallon
- Fuel Tank w/ Anti-Siphon Valve and Electric Sending Unit
- Foredeck Anchor Locker w/ Stainless Steel Gas Shock
- Gelcoat - Premium - Champagne
- Graphics - Boot Stripe - Black
- Gunnel Trim - Molded PVC w/ 316 Stainless Steel Insert
- Hardware - Stainless Steel
- Helm Footrest
- Horn - Electric, Stainless Steel
- Hull & Deck Joint - Mechanically, Chemically Bonded

- Hydraulic Steering
- Lenco Electric Trim Tabs w/ Indicator Lights On Panel
- Machinery Room Hatch w/ Stainless Steel Hinges and Stainless Steel Gas Shocks
- MSC Sensa Tank Monitor for Water Tank
- Powder coated Aluminum Electronics Panel
- Pull-Up Stainless Steel Mooring Cleats (6)
- Props - Stainless Steel
- Raw Water Wash-Down Outlet
- Refrigerator under Helm Seat
- Stainless Steel Outboard Engine Mounting "Chris-Craft" Logo Plates
- Stainless Steel Rod Holders
- Stainless Steel Thru-Hull Fittings
- Power Assisted Tilt Steering
- High Gloss Wood/Stainless Steering Wheel
- Stereo - Fusion, AM/FM Stereo w/ Speakers (4)
- Swim Ladder, Stainless Steel (3 Step)
- Sealed Toggle Helm Switches
- Sport Top Arch (Gunnel Mount) w/ Powder Coated Frame, Spreader Lighting and Aft Electric Sunshade
- Swim Ladder Grab Handle, Stainless Steel
- Thru Hull Fittings, Stainless Steel
- Vinyl - Heavy duty, Stain Resistant UV Protected
- Walk-Thru Transom Door
- Windshield, Low profile Tempered Glass, Stainless Steel Frame

Additional Options

- Yamaha Joystick Piloting
- Painted Hull and Engines - Champagne
- Push Button Start
- Heritage Trim Edition w/ Teak Rails
- Hard Top - Pilot House w/ LED Lighting, Speakers, & Storage
- ELECTRIC SURE SHADE AFT - Motorized
- 12v Air Conditioning w/ vents at helm
- Bow Docking Lights - LED
- Custom Seat and Engine Covers
- Cover - Twin Outboard
- S.S. Fender Clips
- Cockpit Flooring - Soft Woven Vinyl
- Upgraded Garmin 7616xsv 16' Display Package w/ VHF & Depth
- Engine Data & Stereo Integration w/ Garmin Display
- Underwater LED Lighting
- FULL CABIN WITH SLEEPING QUARTERS SINK AND HEAD
- Electric Flush Toilet
- Waste Macerator w/ Ball Valve Discharge
- Electric Anchor Windless w/ 200' (approx.) Chain/rode
- Fusion Stereo



2018 30 Chris-Craft Catalina - Southern Run - Profile



2018 30 Chris-Craft Catalina - Southern Run - Twin Yamaha



2018 30 Chris-Craft Catalina - Southern Run - Helm



2018 30 Chris-Craft Catalina - Southern Run - Cockpit



2018 30 Chris-Craft Catalina - Southern Run - Cockpit



2018 30 Chris-Craft Catalina - Southern Run - Cockpit



2018 30 Chris-Craft Catalina - Southern Run - Cockpit



2018 30 Chris-Craft Catalina - Southern Run - Helm



2018 30 Chris-Craft Catalina - Southern Run - Bow



2018 30 Chris-Craft Catalina - Southern Run - Bow



2018 30 Chris-Craft Catalina - Southern Run - Bow



2018 30 Chris-Craft Catalina - Southern Run - Bow



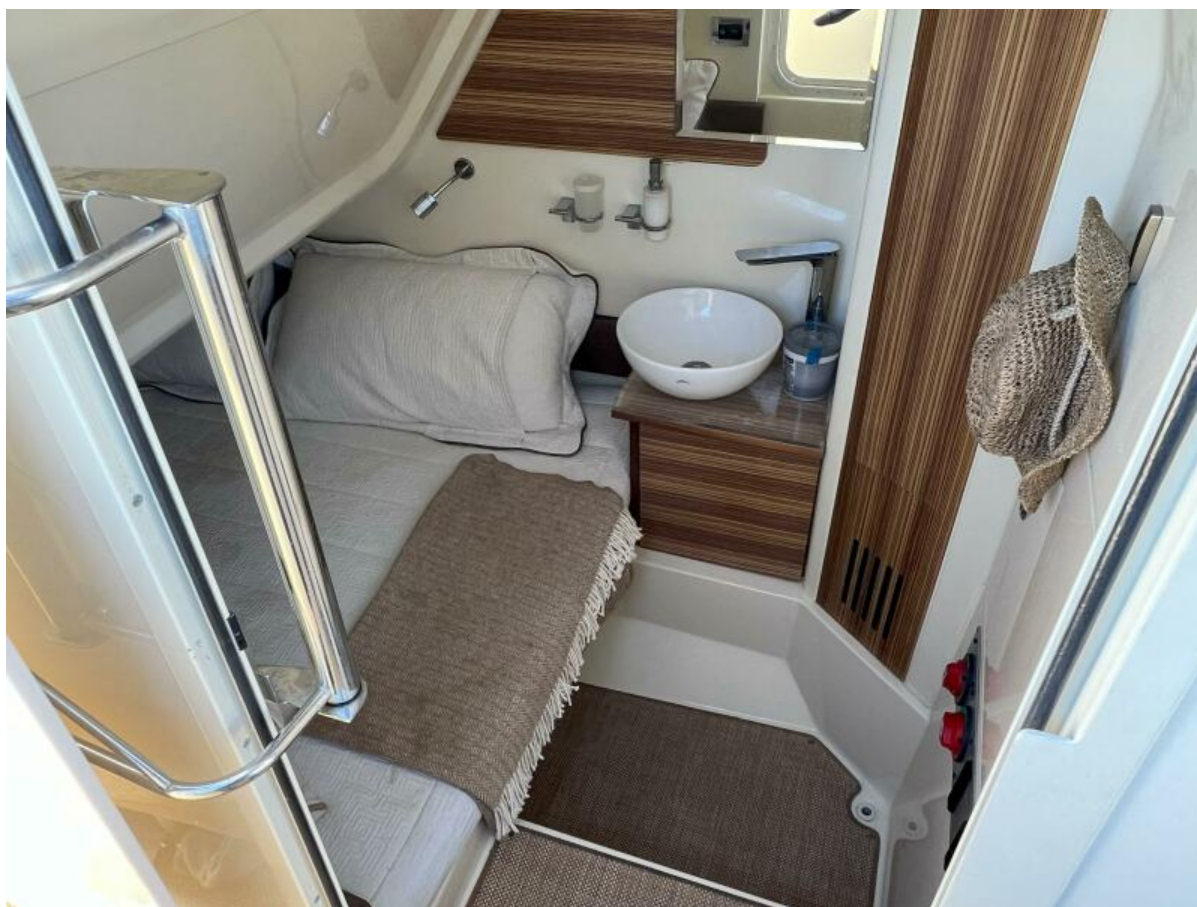
2018 30 Chris-Craft Catalina - Southern Run - Bow



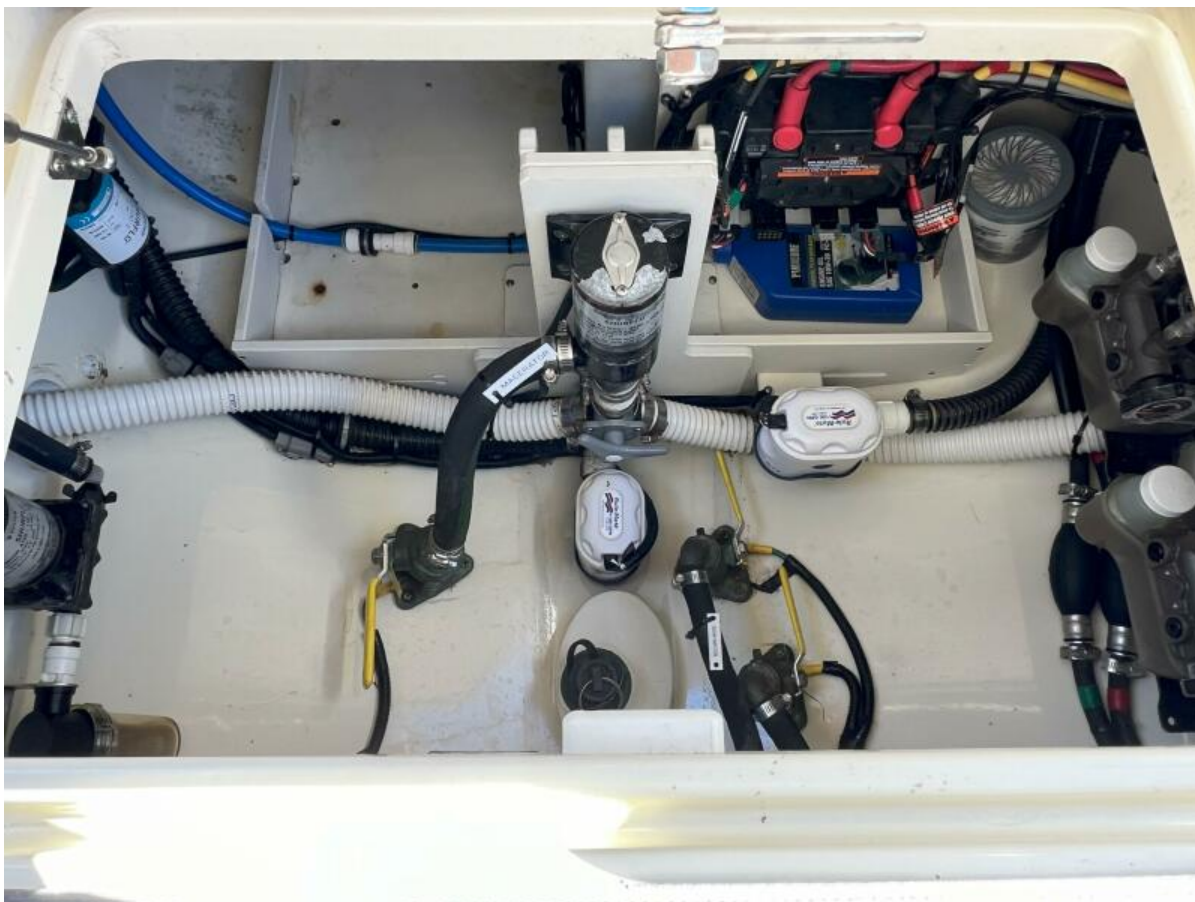
2018 30 Chris-Craft Catalina - Southern Run - Bow



2018 30 Chris-Craft Catalina - Southern Run - Bow



2018 30 Chris-Craft Catalina - Southern Run - Head



2018 30 Chris-Craft Catalina - Southern Run - Bilge



2018 30 Chris-Craft Catalina - Southern Run - Profile



2018 30 Chris-Craft Catalina - Southern Run - Profile



2018 30 Chris-Craft Catalina - Southern Run - Profile



2018 30 Chris-Craft Catalina - Southern Run - Profile



2018 30 Chris-Craft Catalina - Southern Run - Profile



2018 30 Chris-Craft Catalina - Southern Run - Profile



2018 30 Chris-Craft Catalina - Southern Run - Profile