



Good Karma

44' (13.41m) 2012 Meridian 441 Sedan Bridge
Riva Maryland United States



OVERVIEW

Manufacturer:	<i>Meridian</i>		
Engines:	2 Cummins	Hull Material:	Fiberglass
Engine Model:	QSB 480 HO 6.2L	Cruise Speed:	24 Knots
Engine HP:	480	Max Speed:	28 Knots
Beam:	14' 3"	Cabins/Heads:	2 / 2
Max Draft:	3' 1"	Fuel Type:	Diesel
Water:	150 G (567.81 L)	Fuel:	960 G (3633.99 L)

\$469,900



Jeff Martini jeffmartini@owyg.com

301-502-8615

Data Sheet

Category: Motor Yachts
Condition: Used
Model Year: 2012
Beam: 14'3" (4.34m)
Max Draft: 3' 1" (0.94m)
LOA: 44' (13.41m)
(0.00m)
Cabins: 2
Sleeps: 6
Heads: 2

Maximum Speed: 28 Knots
Cruise Speed: 24 Knots
Range NM: 210
Fuel Type: Diesel
Hull Material: Fiberglass
Hull Shape: Semi Displacement
Hull Finish: White
Bridge Clearance: 21'

Dry Weight: 31233 lbs
Fuel Tank: 960 gal (3633.99 liters)
Fresh Water: 150 gal (567.81 liters)
Holding Tank: 55 gal (208.2 liters)
HIN/IMO: MDND7507G112
Stock #: B61458

Engines/Generators

Engine 1

Cummins
QSB 480 HO 6.2L
Inboard
480HP
Fuel: Diesel
Hours: 1100
Year: 2012
Serial #: 73257325
Location: Port

Engine 2

Cummins
QSB 480 HO 6.2L
Inboard
480HP
Fuel: Diesel
Hours: 1100
Year: 2012
Serial #: 73257926
Location: Starboard

Generator 1

Cummins
13.5 MDKBN-7369F
Hours: 185

Summary/Description

Good Karma is a 2012 Meridian 441 Sedan. No boat in her class cruises, maneuvers, or holds station better. An Olssen Electric Davit System...the list goes on and on.

Price Improvement Alert!

The owners of Good Karma would like her to be the next 441 Meridian sold. **"They have now authorized this price reduction, May 2024, to \$469,900. This price can include free winter storage at their dock until April 2025."** With all of the most sought-after features, lift-kept on the Chesapeake, shrink wrapped every fall, and all recommended services up-to-date, this should be the next 441 Meridian sold. Call today!

Cockpit

You board the vessel via the wide and deep swim platform. It is covered in synthetic teak flooring. The platform is outfitted with an electric Olssen Davit System which holds your tender horizontal and well off the platform allowing better access than most systems.

There is a dedicated covered channel to run electric and water lines through which keeps them from obstructing the platform. Within the transom itself there is a roomy dunnage box with controls for the cablemaster, shorepower main breaker, raw and fresh-water washdown, dockside water connection and line storage.

The cockpit is accessed via a flush, inward-swinging transom door. The cockpit is large, wide and unobstructed. There are storage lockers, port and starboard, dedicated fender storage under lids, and a gentle staircase to the bridge. The stairs and steps onto the gunnels are also covered in the faux-teak flooring. There's a molded, forward-facing bench seat across the transom, with padded cushion and inset drink holders.

There is a full enclosure for the cockpit in new condition (not pictured.)

Bridge

The spacious bridge deck is accessed via a gentle staircase from the cockpit. The bridge is isolated by a cockpit-to-bridge door that closes and latches to provide quiet, security and additional space for the bridge. There is removeable bridge-deck carpeting, for cool and comfort underfoot.

Along the port side running aft is a spacious L-shaped lounge seat with removeable table. It is padded with ample backrests. Forward to port is a bench-for-two forward-facing companion seat.

Forward of the bridge door, to starboard, is the bridge fridge and work-area. Mounted above that is the flat-panel TV. Forward of that is the plush captain's chair with armrests.

The dash is arrayed in broad but organized fashion. The wheel is centered to the captain, and the controls and joystick are right at hand. The controls are single-lever electronic with trolling mode and sync. The boat is equipped with the Precision Pilot and SkyHook to enable you to automatically hold station.

The dash has full instrumentation including analog engine gauges as well as SmartCraft digital readout, deluxe electronics (detailed in "Electronics"), back-up cameras, stereo controls, remote spotlight, auto-pilot handheld remote and much more. Extending in front of the companion bench seat for two is a wide and deep "glove box" with storage for electronics covers, and a second VHF radio station for crewmates to assist in communications.

The bridge is covered by a full-length molded, integrated fiberglass hard top with three ventilation hatches. The top is enclosed with clear acrylic enclosure panels. There are custom sliding panels, P & S, to provide easy ventilation.

The bridge is served by two dedicated reverse-cycle heat and air conditioning units with controls on the port side bulkhead. There is a wet bar and grill flush in the counters to port.

Salon

The 441 Salon is visually stunning. With horizon views of almost 360 degrees, and the tiered windows that provide light and visibility whether seated or standing, the sense of openness makes it a very inviting space to entertain, or just live. There are accordion blinds for shade and privacy, inset ceiling lighting, and switchable 110v lighting.

You enter through a substantial sliding glass door just to port. There is a retractable screen and a curtain for shade and privacy. to port, aft is the electrical panel, TV and entertainment center. Forward of that are two barrel chairs with a fixed side-table between them. Opposing the chairs to starboard is the flex-steel sofa/lounge with return. The sofa quickly converts to a large and comfortable berth fit for a seven footer. There is a sizeable storage compartment under the forward cushion.

Forward of the lounge is the plush C-shaped Dinette. It has a solid-surface dining table which is removeable. The dinette converts to another berth with the addition of a support plank which stows away in a dedicated compartment abaft of the dinette, and a fill-in cushion. The dinette is raised up a step which puts you at eye-level with the upper window array.

To port, across from the dinette is the well appointed Galley. Please refer to "Galley" section for details.

Galley

The galley is arrayed to the port and open to the dinette area. There's a Norcold full-size over-under refrigerator facing starboard. Forward of that are two large stainless sinks under Corian countertops with lids to make additional work space. There is ample cabinet storage beneath.

Forward of the sinks is a Dometic three-burner electric stove. More storage is beneath the stove with cabinets, drawers and a lazy-susan. Moving forward is a storage cubby, and then a Contoure Microwave/Convection oven, beneath which, tons more drawer and cabinet storage..

Master Stateroom

Master stateroom is outfitted with an island queen berth with storage beneath. The mattress is inner-spring pillowtop. There are ledges, directional reading lights, hanging lockers, port and starboard, and private access to the Master head.

There is an opening, screened and shaded overhead hatch for light, ventilation and egress, and two oval, opening portholes, port and starboard. the port aft bulkhead has a sizeable flat panel TV, DVD and stereo, as well as controls for the dedicated air conditioning system.

Master Head

The master head is outfitted with a quiet and efficient Vacu-Flush head system. It has a sink, counter, mirror, storage cabinet. The shower is a glass-enclosed stall shower with a seating ledge, and portlight.

Guest head has vacu-flush toilet, sink, mirror and ledge, and a hand-held shower wand with pull-around curtain.

Engine Room

The engine room is accessed via a huge single hatch in the cockpit with gas-assist struts. There is plenty of room to move and good light and accessibility for service. All of the valving is readily accessible. It is protected by an automatic fire extinguishing system. The generator sits beam wise across the aft and is easy to access for service. The cabled master system is to port, aft of the engine and similarly easy to get to.

NOTE: 1000 hour engine service: August 2021. Transmissions serviced: September 2022.

Guest Stateroom

The guest stateroom has a full sized berth running beam wise. There are storage drawers, a full-sized hanging locker and cabinets. To starboard is a vanity, dressing table and stool. Towards the aft is the Splendide washer/dryer combo.

Electronics

The full suite of electronics includes:

- Dual Raymarine E-120 Displays
- Raymarine touchscreen Radar
- Raymarine touchscreen GPS/Plotter
- Raymarine Dual Frequency Sonar/Fish Finder
- Raymarine ST 60+ Digital Depth Finder
- Raymarine Ray 240 bracket/hand held VHF with remote speaker and MMSI
- Garmin VHF radio
- Clarion Stereo Remote
- Remote Spotlight Control
- Dual Back-up Cameras, port and starboard

Utility Room

Located beneath the salon floor, under a hinged, carpeted hatch riding on gas-assist struts, is the huge, full-beam utility space. Accessed via a removeable ladder, this lighted space houses many of the on-board systems and keeps them protected from the harsher environment of the engine room. This is where the VacuFlush head pumps are housed, along

with house batteries, battery charger, a breaker panel, the potable water pump, water heater, CruiseAir a/c system, and much more. There is ample storage space as well for accessories, spare parts, and almost anything else you need to carry.

Electrical and Mechanical

The boat is powered by a single 50A/250V shore power system via a Cablemaster cord retrieval system located below-decks, and accessed from the dunnage box in the transom. The electrical control panel is just inside the cabin entry door, to port.

There is a Cummins 13.5 KW generator with less than 200 hours located in the engine compartment. This is ample to power all 240 Volt systems aboard.

There are engine batteries located in the engine compartment. House batteries and chargers are located in the Utility Room. There is a 12V battery management panel there as well as a Pro Nautic 1250 Automatic Digital Marine Battery Charger.

Miscellaneous Equipment

- Central Vac
- Ice maker
- Rear view cameras
- 6 Zone a/c with reverse cycle heat, including bridge air
- Cablemaster
- Electronic controls with sync and SkyHook
- Auto Pilot
- Olssen Electric Davit System, 1000 lb. capacity
- Underwater Lights

NOTE: There is no tender that conveys

Disclaimer

The company offers the details of this vessel in good faith but cannot guarantee or warrant the accuracy of this information nor warrant the condition of the vessel. A buyer should instruct his agents, or his surveyors, to investigate such details as the buyer desires validated. This vessel is offered subject to prior sale, price change or withdrawal without notice.

















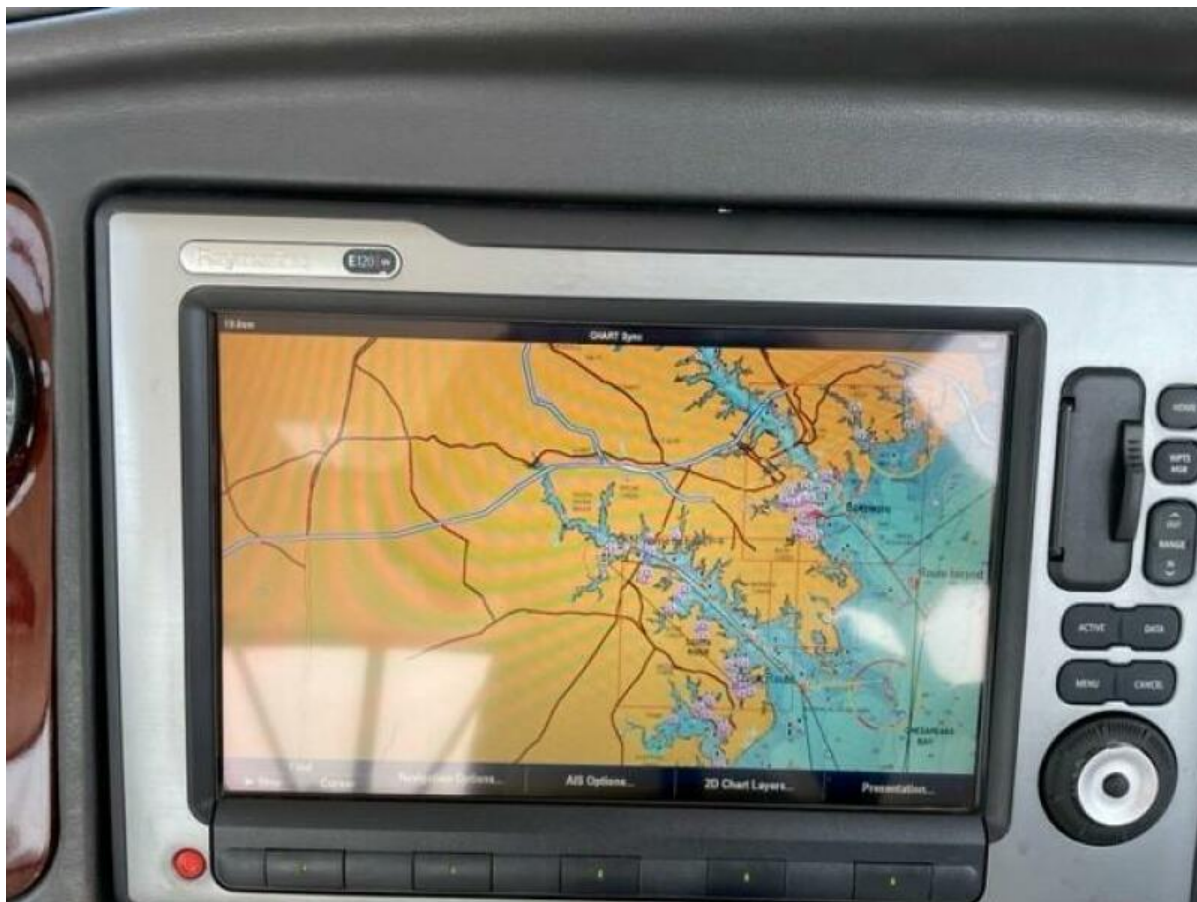


























deep storage under the sofa/lounge





























































